



Community Information

Image from Logan City Special School website; does not represent the project

# Name the secondary campus for Logan City Special School

## New facilities to support teaching and learning

The number of students at Logan City Special School has grown fast, going up by almost 70% since 2021. The school is located on a small 2.6 hectare site that is not big enough for the predicted number of future students.

The Department of Education is working on a long-term solution to cater for future student numbers in the Logan area.

To meet the demand now, a secondary school campus will be set up on part of the bigger 12 hectare Woodridge State High School ground. The new Logan City Special School secondary campus will have its own street entrance and will be able to teach up to 126 students. It will open in 2025.

To make way for the secondary Logan City Special School campus, Woodridge State High School will be rearranged and will receive 8 new classrooms to support their students. A new school hall for gatherings, concerts, shows and indoor sports is also being built at Woodridge State High School.

The Department of Education will make sure that both schools have the buildings and areas they need for all students.

A map of Woodridge State High School, where the secondary Logan City Special School campus will be built, is shown overleaf. The map shows where buildings, play spaces and car parks will be put. You are invited to attend an information session to find out more (details about the information sessions are on the back page).

Early works have already begun on the site with major works to begin mid-September 2024.

### Name the secondary campus

Tell us what you think about the proposed names for the secondary campus:

- Logan City Special School – Charles Avenue campus
- Logan City Special School – secondary campus

Or suggest a different name.



### Have your say

To name the secondary campus scan the QR code below, or visit the link [survey.qed.qld.gov.au/n/aQ1h8on](https://survey.qed.qld.gov.au/n/aQ1h8on)

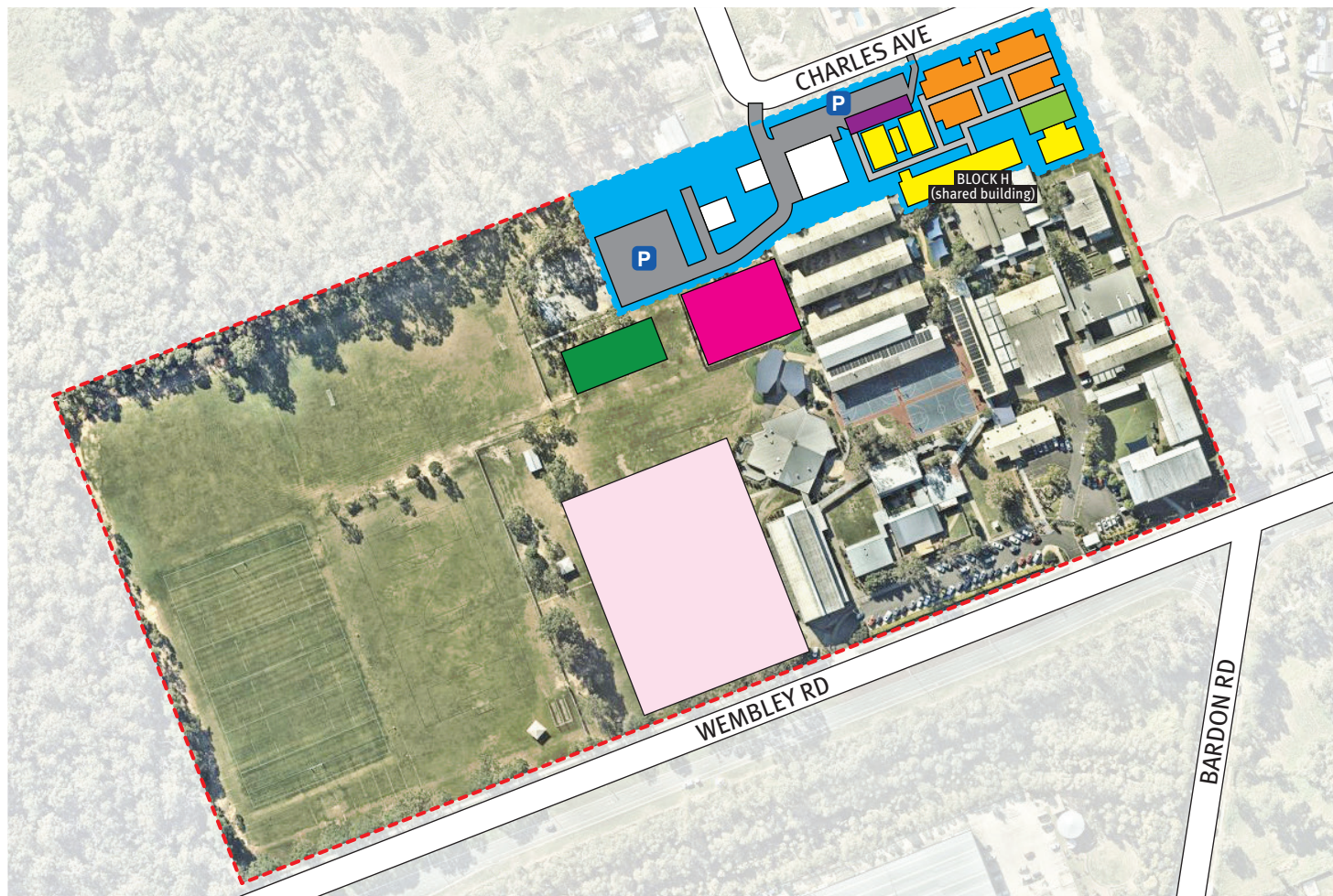


The survey closes at 11:59 pm, Friday 13 September 2024.





# Location of Logan City Special School secondary campus – site plan



## Key

- |  |                                   |                               |
|--|-----------------------------------|-------------------------------|
| Woodridge State High School grounds          | New buildings to be constructed   | Existing buildings            |
| Logan City Special School secondary campus   | New covered drop-off/pick-up area | Covered walkway               |
| New multi-purpose hall and upgraded car park | New two-storey learning centre    | Internal road                 |
| Existing buildings to be refurbished         | Basketball court                  | New visitor and staff parking |
| 'Ninja Warrior' playground                   |                                   |                               |

## Secondary campus information session – Logan City Special School

Only Logan City Special School parents, carers, teaching staff and students are specifically encouraged to attend this session.

**Location:** Logan City Special School, front entrance – parent gate

**Date:** Monday, 9 September 2024

**Time:** 2 pm–3 pm

Free sausage sizzle provided by the school.

## Secondary campus information session – Woodridge State High School

Members of the local community, parents, carers, teaching staff and students are welcome to attend this session.

**Location:** Woodridge State High School, 'The Forum' via Gate 1 (follow the signage)

**Date:** Wednesday, 11 September 2024

**Time:** 3:30 pm–5:30 pm

Drop-in session to answer your questions.



To translate this flyer in another language, please call

**1800 512 451**

Quote the link below to the translator to access the digital version of the flyer

[qed.qld.gov.au/  
programs-initiatives/department/  
building-education/news](https://qed.qld.gov.au/programs-initiatives/department/building-education/news)