

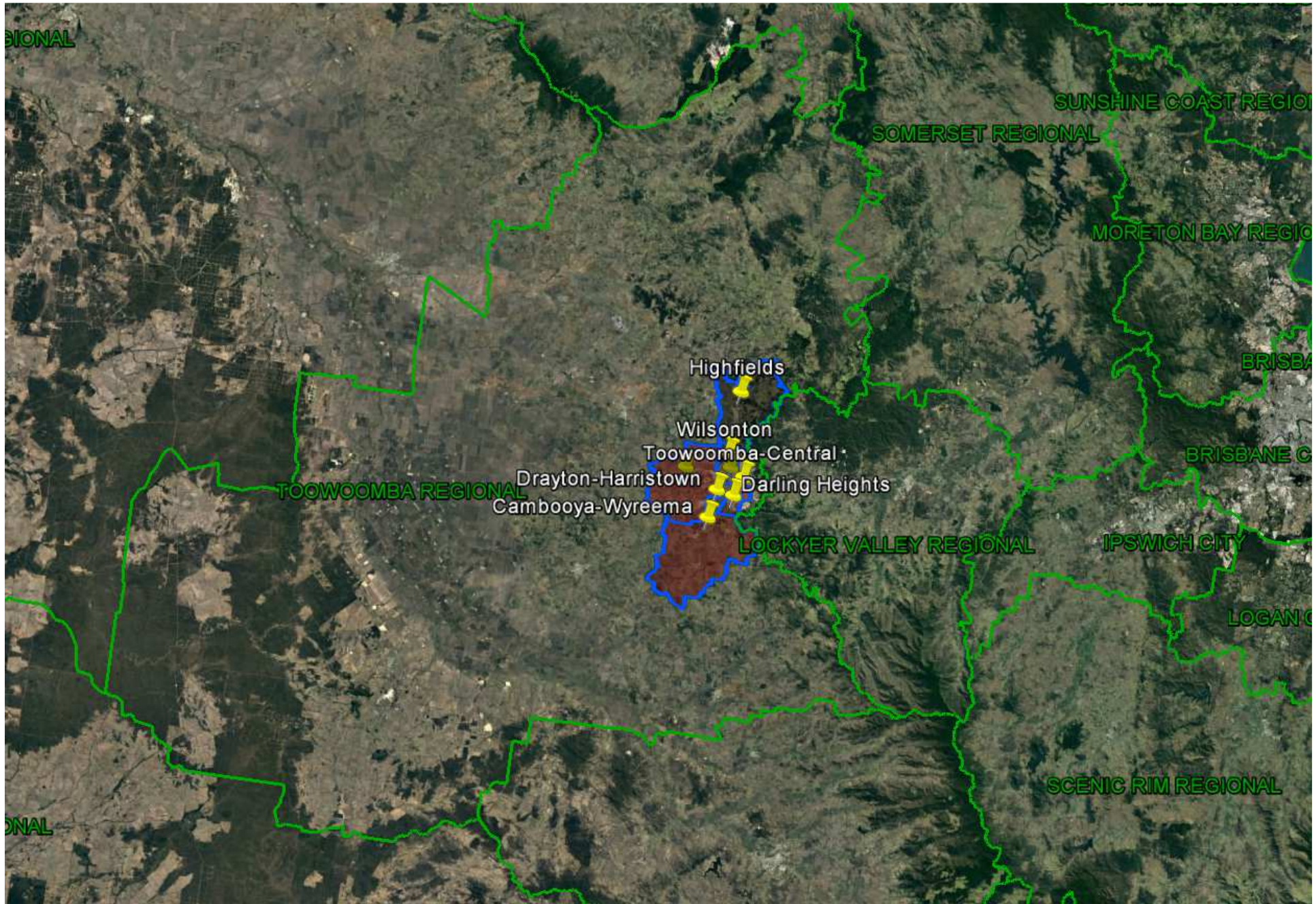
Queensland Schools Planning Reference Committee
Cross-Sectoral New Schools Demand Mapping
2016-2036

Toowoomba Regional Council

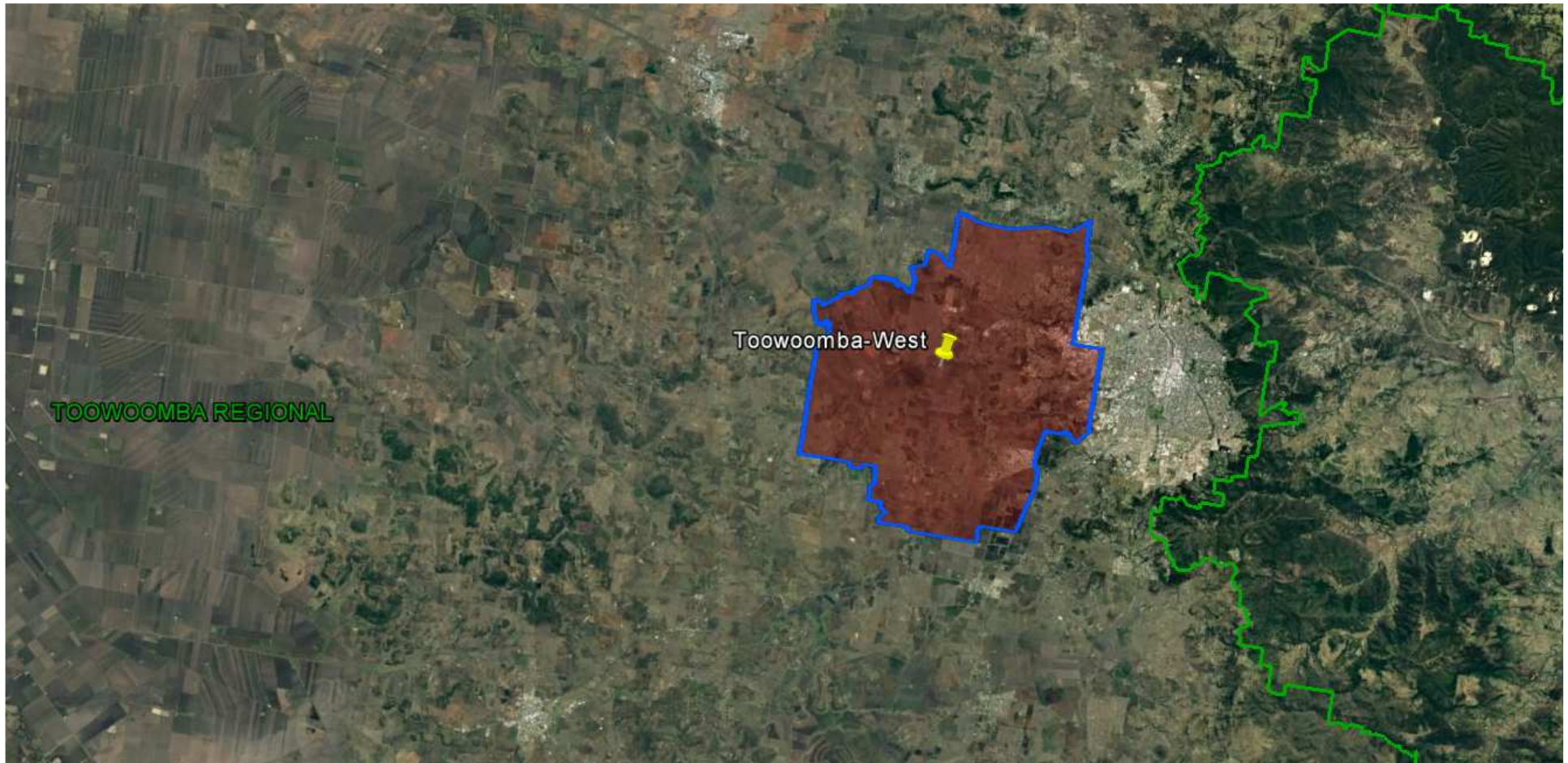
10 May 18

Investigated SA2

- Toowoomba- West
 - Highfields
- Cambooya-Wyreema; Darling Heights; Drayton-Harristown
 - Toowoomba-Central
 - Newtown (Qld); Wilsonton



Queensland Schools Planning Reference Committee
SA2 studied in the Toowoomba Regional Council area



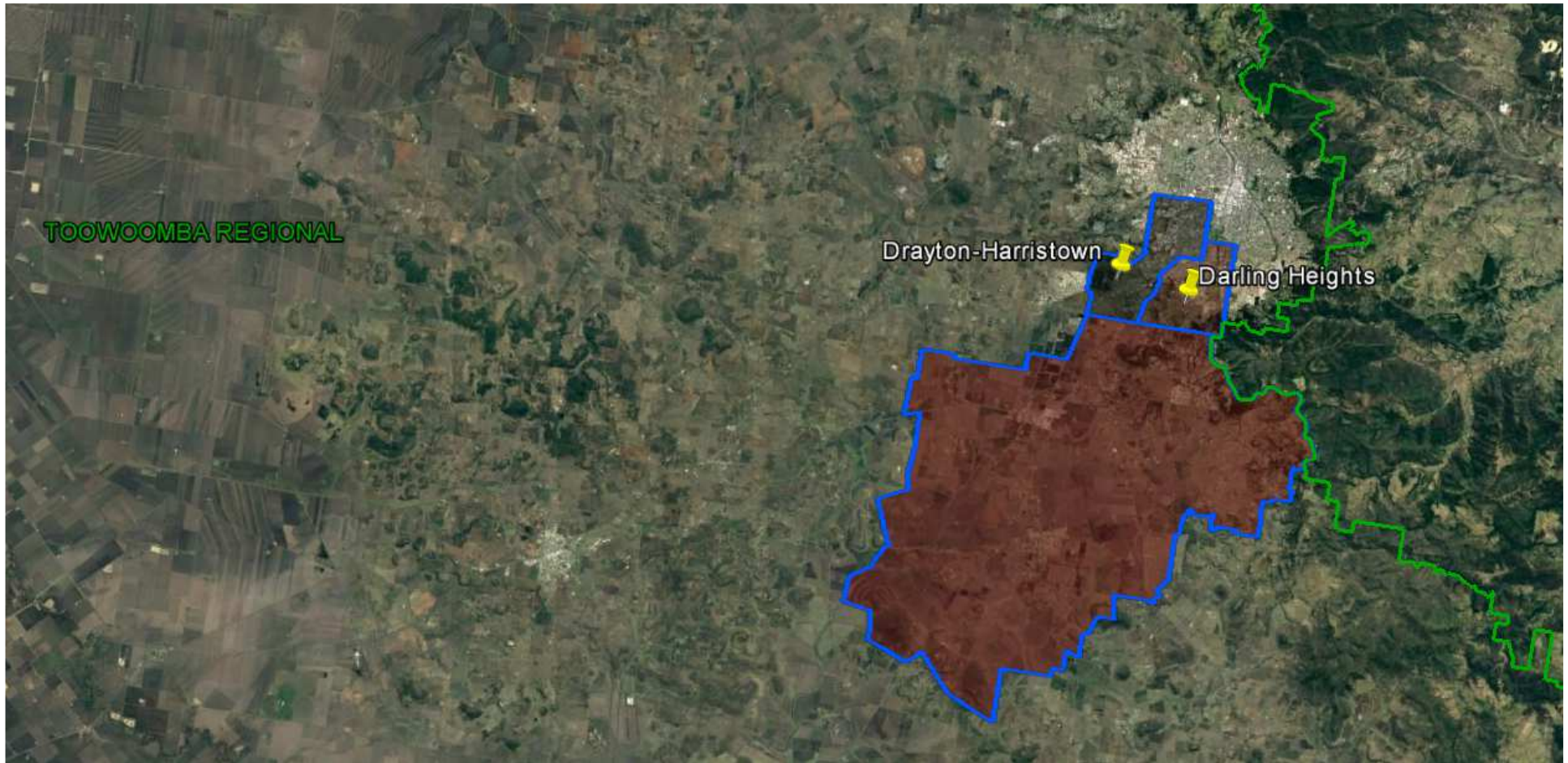
Queensland Schools Planning Reference Committee
 Cross-Sectoral New Schools Demand Mapping 2016-2036
Toowoomba Regional Council
SA2
Toowoomba-West

Findings			
Primary		Secondary	
1st Decade to 2026	2nd Decade to 2036	1st Decade to 2026	2nd Decade to 2036
No new primary schools are likely to be required in the first decade. Expansion of existing sites likely to capture growth	0-1 new primary school may be required in the second decade	No new secondary schools are likely to be required in the first decade. Expansion of existing sites likely to capture growth	0 - 1 new secondary school may be required in the second decade



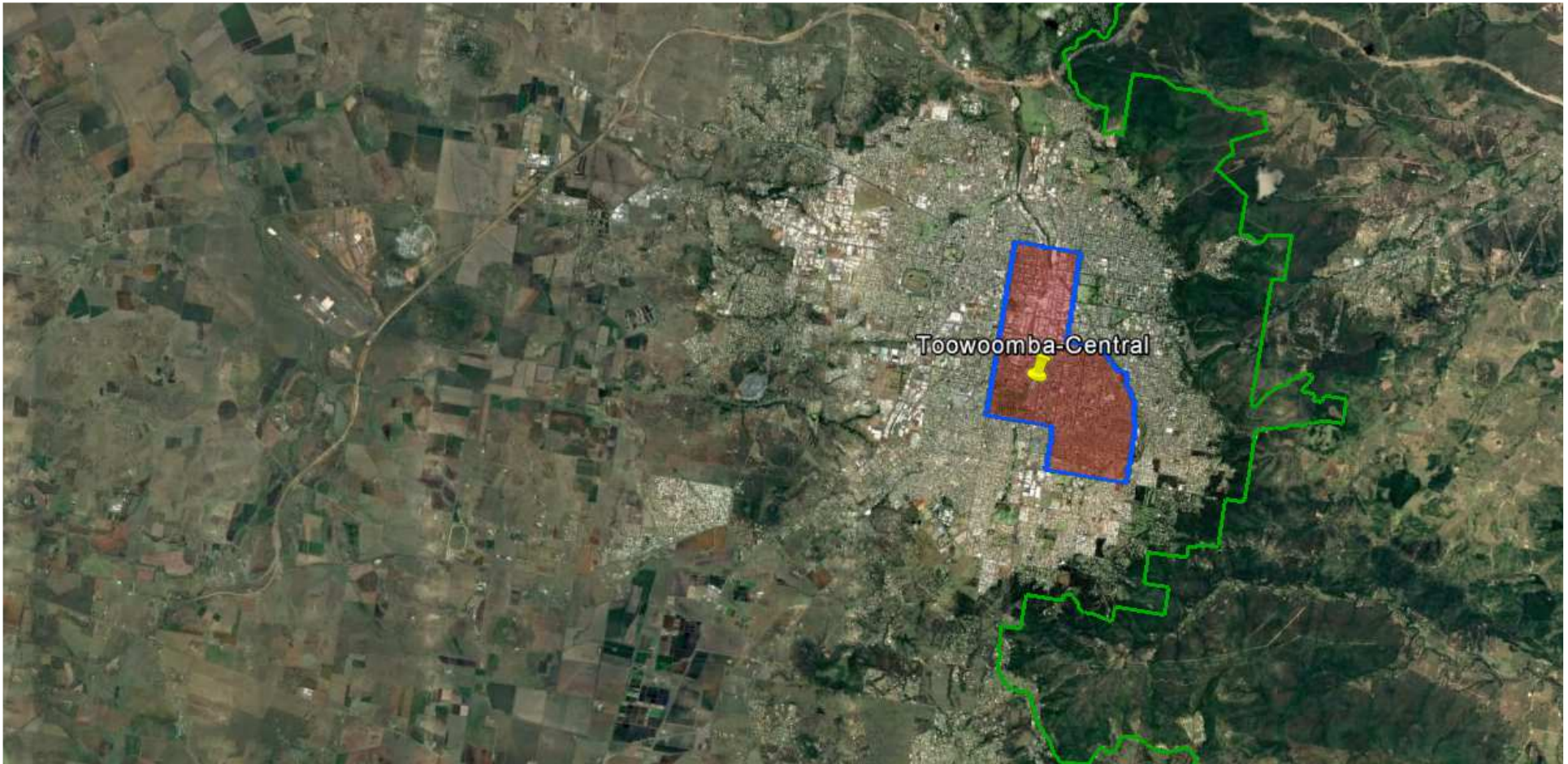
Queensland Schools Planning Reference Committee
 Cross-Sectoral New Schools Demand Mapping 2016-2036
Toowoomba Regional Council
SA2
Highfields

Findings			
Primary		Secondary	
1st Decade to 2026	2nd Decade to 2036	1st Decade to 2026	2nd Decade to 2036
No new primary schools are likely to be required in the first decade. Expansion of existing sites likely to capture growth	No new primary schools are likely to be required in the second decade. Expansion of existing sites likely to capture growth	No new secondary schools are likely to be required in the first decade. Expansion of existing sites likely to capture growth	No new secondary schools are likely to be required in the second decade. Expansion of existing sites likely to capture growth



Queensland Schools Planning Reference Committee
 Cross-Sectoral New Schools Demand Mapping 2016-2036
Toowoomba Regional Council
SA2 Cluster
Cambooya-Wyreema; Darling Heights; Drayton - Harristown

Findings			
Primary		Secondary	
1st Decade to 2026	2nd Decade to 2036	1st Decade to 2026	2nd Decade to 2036
No new primary schools are likely to be required in the first decade. Expansion of existing sites likely to capture growth	No new primary schools are likely to be required in the second decade. Expansion of existing sites likely to capture growth	No new secondary schools are likely to be required in the first decade. Expansion of existing sites likely to capture growth	0 - 1 new secondary school may be required in the second decade



Queensland Schools Planning Reference Committee
 Cross-Sectoral New Schools Demand Mapping 2016-2036
Toowoomba Regional Council
SA2
Toowoomba-Central

Findings			
Primary		Secondary	
1st Decade to 2026	2nd Decade to 2036	1st Decade to 2026	2nd Decade to 2036
No new primary schools are likely to be required in the first decade. Expansion of existing sites likely to capture growth	No new primary schools are likely to be required in the second decade. Expansion of existing sites likely to capture growth	No new secondary schools are likely to be required in the first decade. Expansion of existing sites likely to capture growth	No new secondary schools are likely to be required in the second decade. Expansion of existing sites likely to capture growth



Queensland Schools Planning Reference Committee
 Cross-Sectoral New Schools Demand Mapping 2016-2036
Toowoomba Regional Council
SA2 Cluster
Newtown (Qld); Wilosnton

Findings			
Primary		Secondary	
1st Decade to 2026	2nd Decade to 2036	1st Decade to 2026	2nd Decade to 2036
No new primary schools are likely to be required in the first decade. Expansion of existing sites likely to capture growth	No new primary schools are likely to be required in the second decade. Expansion of existing sites likely to capture growth	No new secondary schools are likely to be required in the first decade. Expansion of existing sites likely to capture growth	No new secondary schools are likely to be required in the second decade. Expansion of existing sites likely to capture growth