

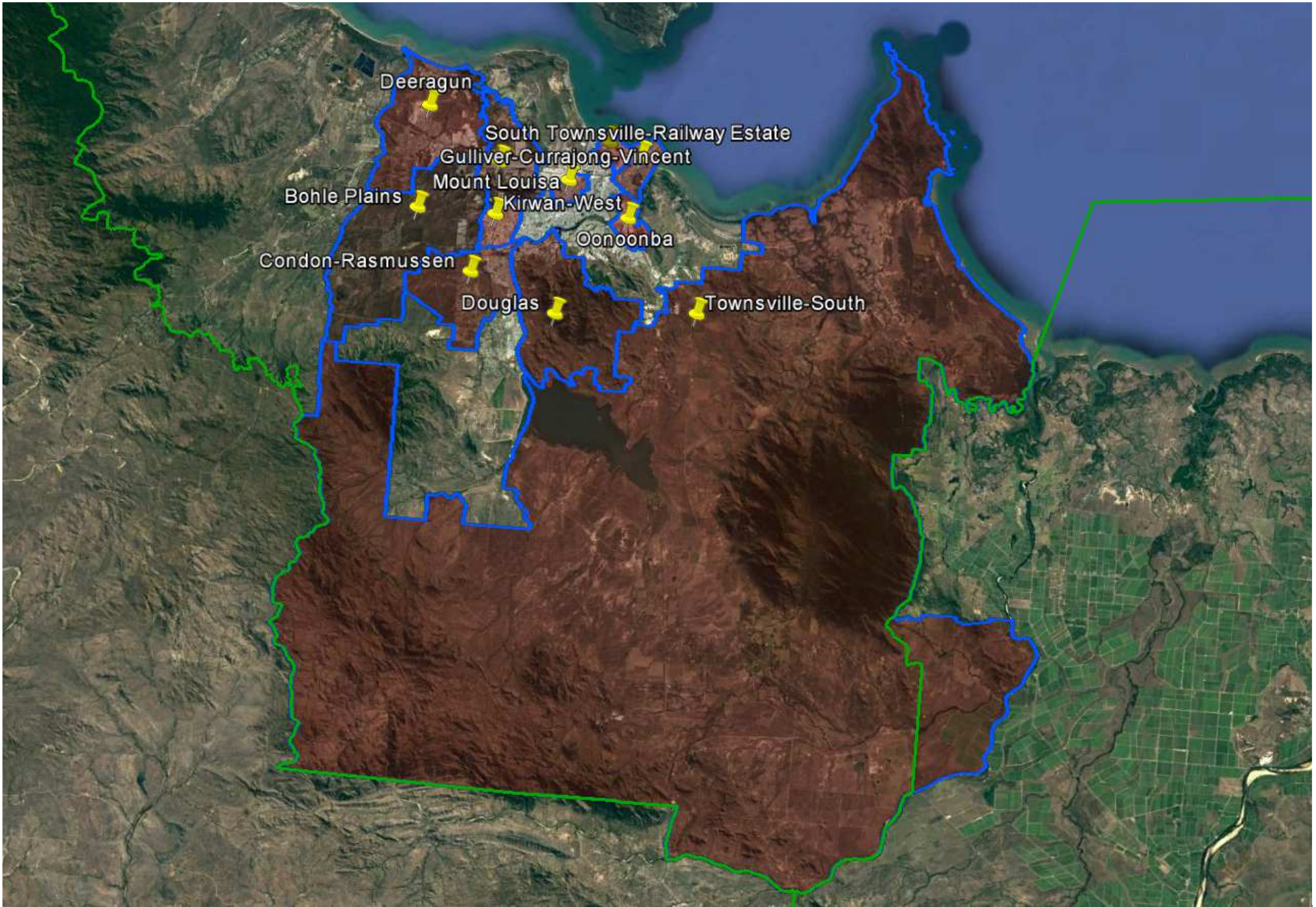
Queensland Schools Planning Reference Committee
Cross-Sectoral New Schools Demand Mapping
2016-2036

Townsville City Council

15 May 18

Investigated SA2

- Deeragun
- Townsville-South
- Bohle Plains; Mount Louisa
 - Oonoonba
- Condon-Rasmussen; Douglas
- Townsville City-North Ward; South Townsville-Railway Estate
 - Gulliver - Currajong – Vincent
 - Kirwan-West



Queensland Schools Planning Reference Committee
SA2 studied in the Townsville City Council area



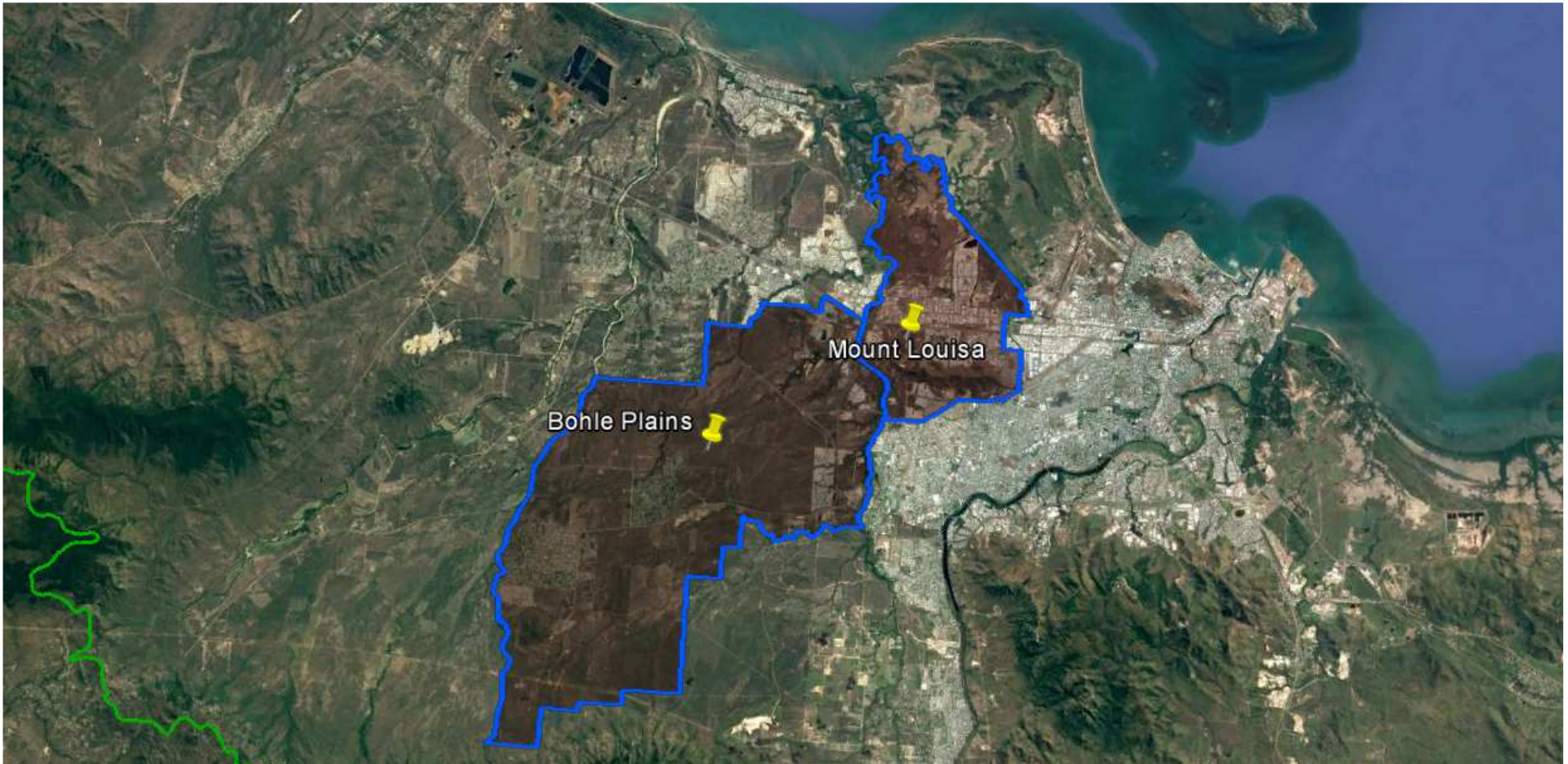
Queensland Schools Planning Reference Committee
 Cross-Sectoral New Schools Demand Mapping 2016-2036
Townsville City Council
SA2
Deeragun

Findings			
Primary		Secondary	
1st Decade to 2026	2nd Decade to 2036	1st Decade to 2026	2nd Decade to 2036
1-2 new primary schools may be required in the first decade	2-3 new primary schools may be required in the second decade	1-2 new secondary schools may be required in the first decade	0 - 1 new secondary school may be required in the second decade



Queensland Schools Planning Reference Committee
 Cross-Sectoral New Schools Demand Mapping 2016-2036
Townsville City Council
SA2
Townsville-South

Findings			
Primary		Secondary	
1st Decade to 2026	2nd Decade to 2036	1st Decade to 2026	2nd Decade to 2036
0-1 new primary school may be required in the first decade	0-1 new primary school may be required in the second decade	No new secondary schools are likely to be required in the first decade. Expansion of existing sites likely to capture growth	0 - 1 new secondary school may be required in the second decade



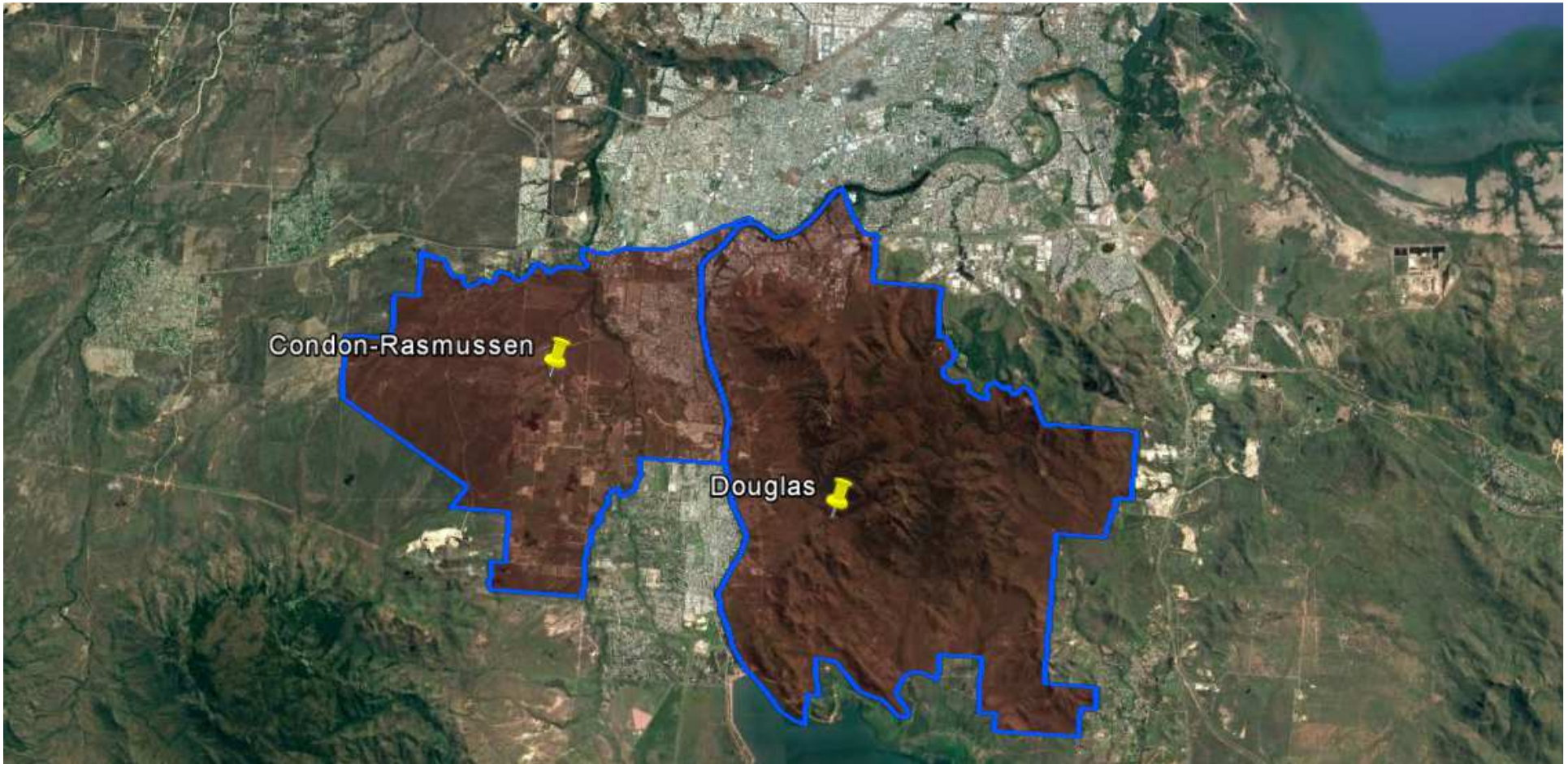
Queensland Schools Planning Reference Committee
 Cross-Sectoral New Schools Demand Mapping 2016-2036
Townsville City Council
SA2 Cluster
Bohle Plains; Mount Louisa

Findings			
Primary		Secondary	
1st Decade to 2026	2nd Decade to 2036	1st Decade to 2026	2nd Decade to 2036
0-1 new primary school may be required in the first decade	0-1 new primary school may be required in the second decade	No new secondary schools are likely to be required in the first decade. Expansion of existing sites likely to capture growth	0 - 1 new secondary school may be required in the second decade



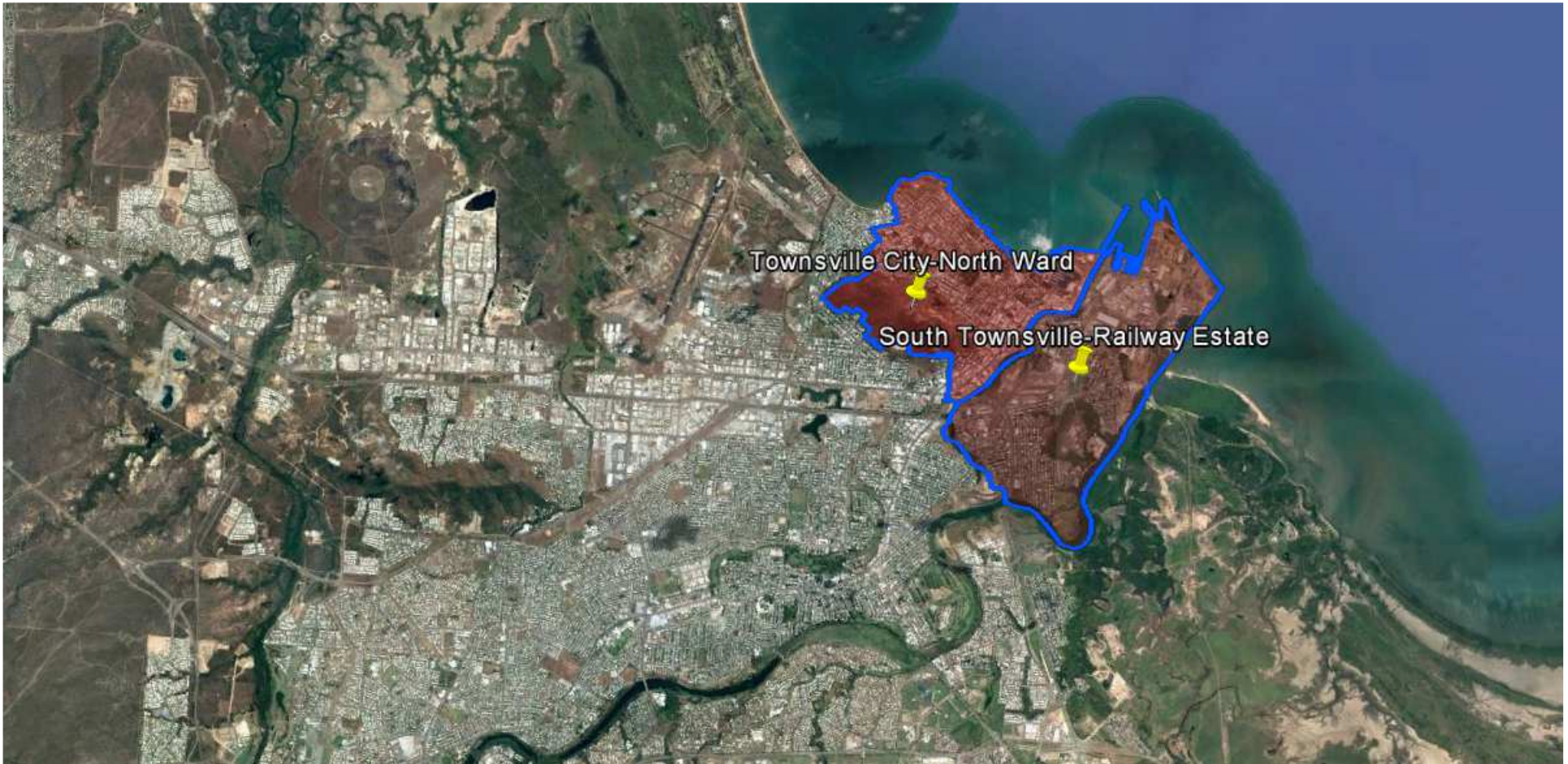
Queensland Schools Planning Reference Committee
 Cross-Sectoral New Schools Demand Mapping 2016-2036
Townsville City Council
SA2
Oonoonba

Findings			
Primary		Secondary	
1st Decade to 2026	2nd Decade to 2036	1st Decade to 2026	2nd Decade to 2036
0-1 new primary school may be required in the first decade	No new primary schools are likely to be required in the second decade. Expansion of existing sites likely to capture growth	No new secondary schools are likely to be required in the first decade. Expansion of existing sites likely to capture growth	No new secondary schools are likely to be required in the second decade. Expansion of existing sites likely to capture growth



Queensland Schools Planning Reference Committee
 Cross-Sectoral New Schools Demand Mapping 2016-2036
Townsville City Council
SA2 Cluster
Condon-Rasmussen; Douglas

Findings			
Primary		Secondary	
1st Decade to 2026	2nd Decade to 2036	1st Decade to 2026	2nd Decade to 2036
No new primary schools are likely to be required in the first decade. Expansion of existing sites likely to capture growth	No new primary schools are likely to be required in the second decade. Expansion of existing sites likely to capture growth	No new secondary schools are likely to be required in the first decade. Expansion of existing sites likely to capture growth	No new secondary schools are likely to be required in the second decade. Expansion of existing sites likely to capture growth



Queensland Schools Planning Reference Committee
 Cross-Sectoral New Schools Demand Mapping 2016-2036

Townsville City Council
SA2 Cluster

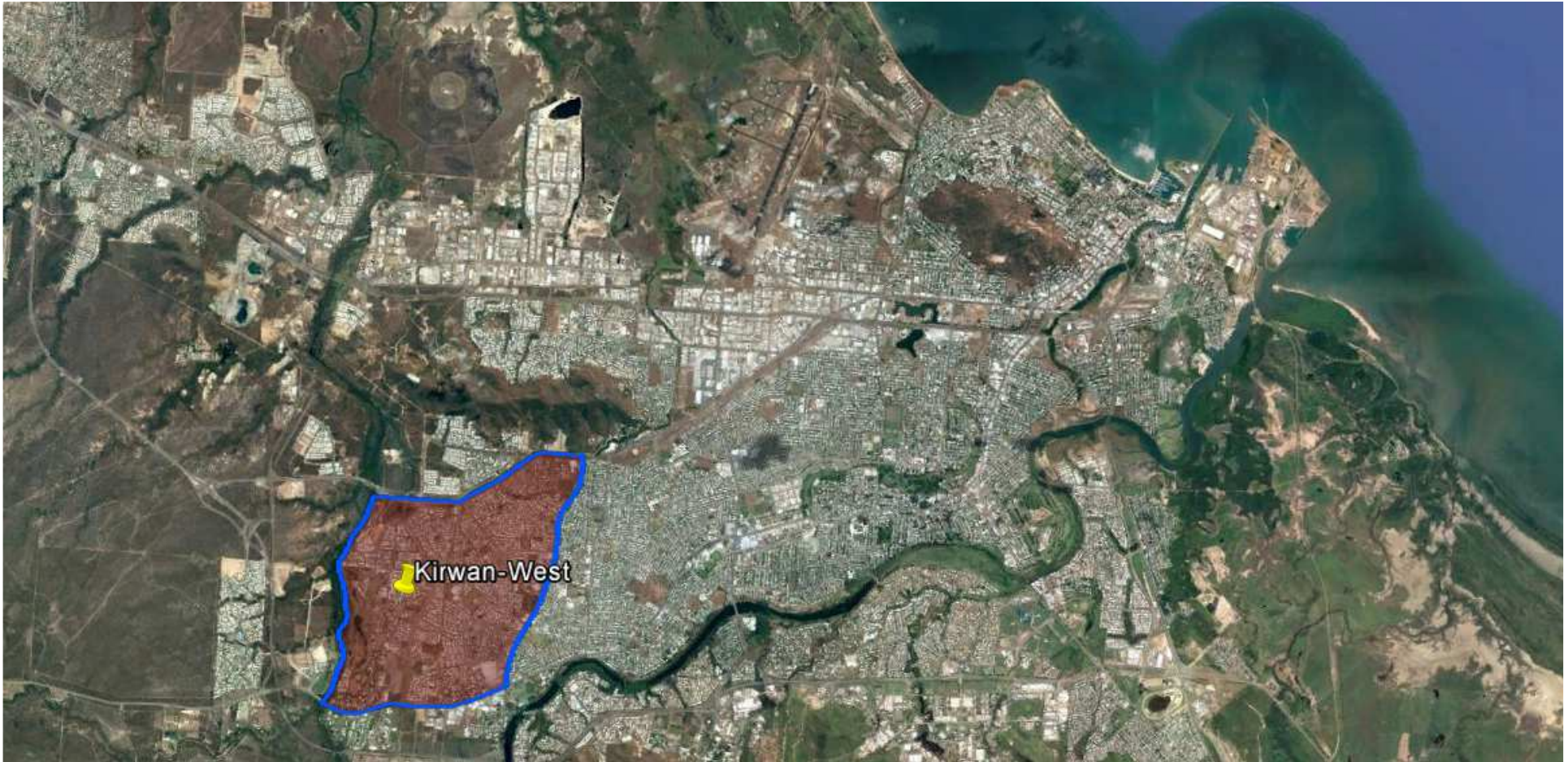
Townsville City-North Ward; South Townsville-Railway Estate

Findings			
Primary		Secondary	
1st Decade to 2026	2nd Decade to 2036	1st Decade to 2026	2nd Decade to 2036
No new primary schools are likely to be required in the first decade. Expansion of existing sites likely to capture growth	0-1 new primary school may be required in the second decade	No new secondary schools are likely to be required in the first decade. Expansion of existing sites likely to capture growth	No new secondary schools are likely to be required in the second decade. Expansion of existing sites likely to capture growth



Queensland Schools Planning Reference Committee
 Cross-Sectoral New Schools Demand Mapping 2016-2036
Townsville City Council
SA2
Gulliver - Currajong - Vincent

Findings			
Primary		Secondary	
1st Decade to 2026	2nd Decade to 2036	1st Decade to 2026	2nd Decade to 2036
No new primary schools are likely to be required in the first decade. Expansion of existing sites likely to capture growth	No new primary schools are likely to be required in the second decade. Expansion of existing sites likely to capture growth	No new secondary schools are likely to be required in the first decade. Expansion of existing sites likely to capture growth	No new secondary schools are likely to be required in the second decade. Expansion of existing sites likely to capture growth



Queensland Schools Planning Reference Committee
 Cross-Sectoral New Schools Demand Mapping 2016-2036
Townsville City Council
SA2
Kirwan-West

Findings			
Primary		Secondary	
1st Decade to 2026	2nd Decade to 2036	1st Decade to 2026	2nd Decade to 2036
No new primary schools are likely to be required in the first decade. Expansion of existing sites likely to capture growth	No new primary schools are likely to be required in the second decade. Expansion of existing sites likely to capture growth	No new secondary schools are likely to be required in the first decade. Expansion of existing sites likely to capture growth	No new secondary schools are likely to be required in the second decade. Expansion of existing sites likely to capture growth