

Queensland Schools Planning Reference Committee  
Cross-Sectoral New Schools Demand Mapping  
2016-2036

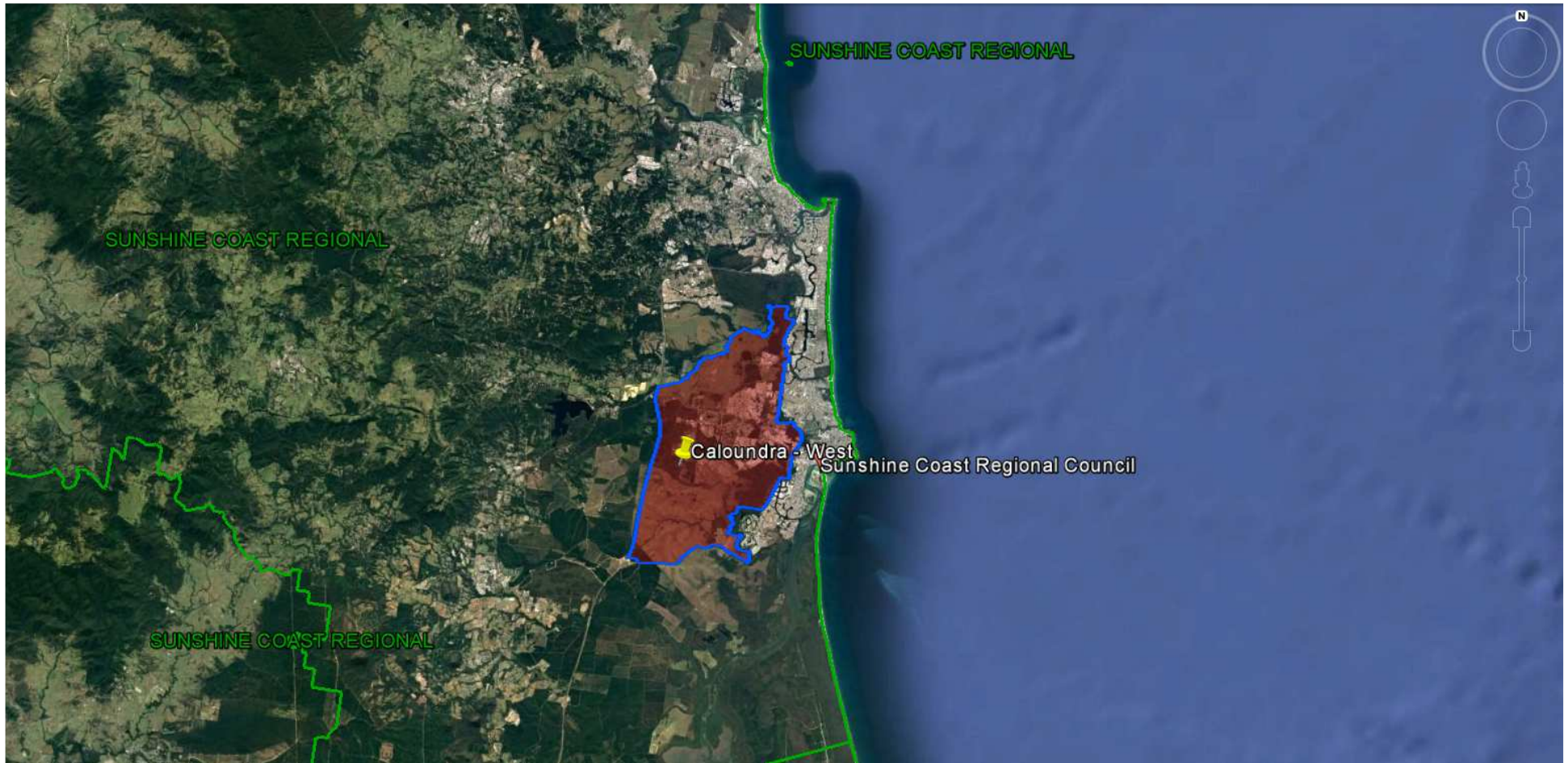
## Sunshine Coast Council

### Investigated SA2

- Caloundra - West
  - Landsborough
- Sippy Downs; Mountain Creek
  - Maroochydore - Kuluin
- Caloundra - Kings Beach; Golden Beach - Pelican Waters
  - Wurtulla – Birtinya; Parrearra - Warana
    - Bli Bli; Nambour

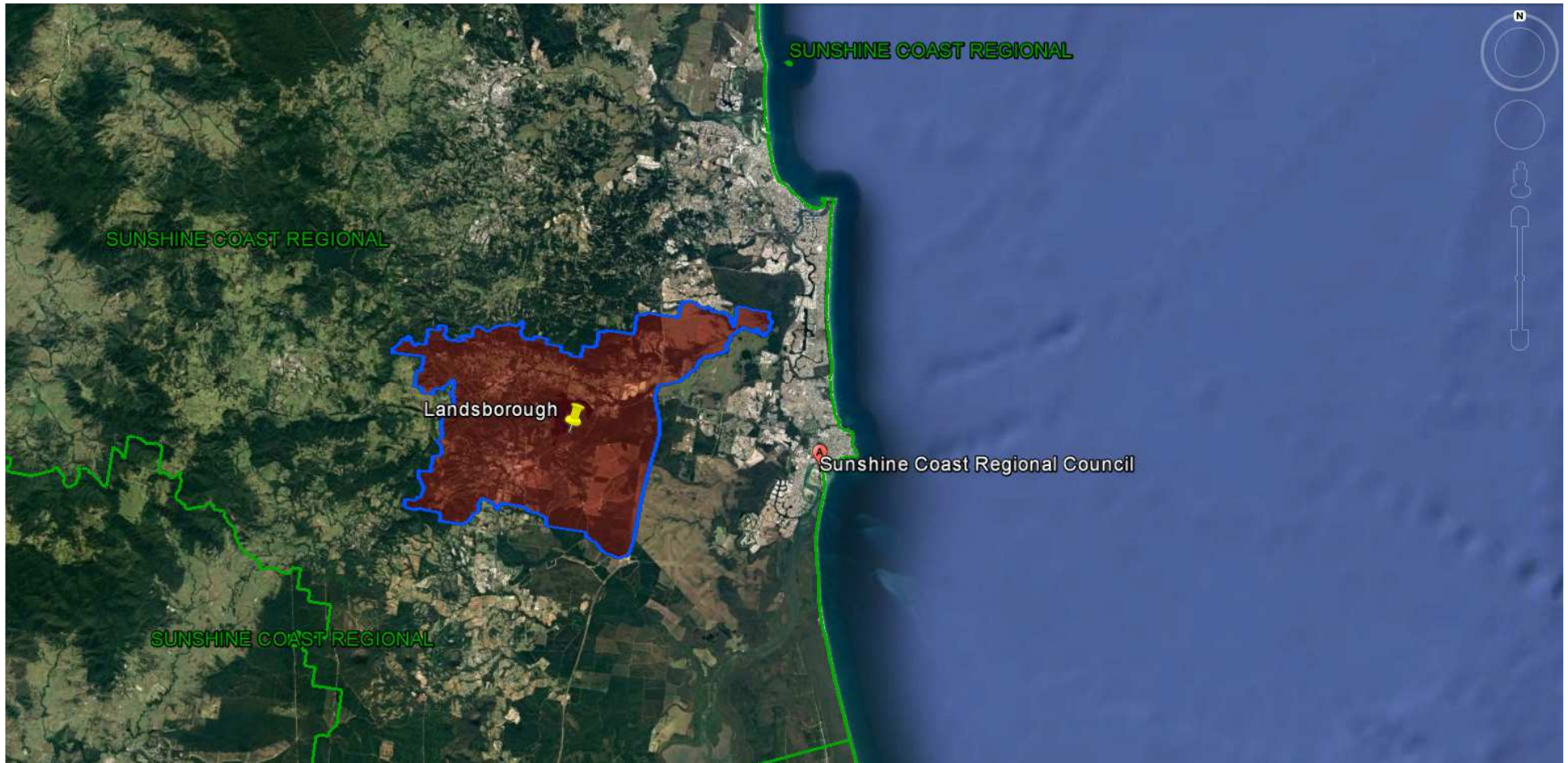


Queensland Schools Planning Reference Committee  
**SA2 studied in the Sunshine Coast Council area**



Queensland Schools Planning Reference Committee  
 Cross-Sectoral New Schools Demand Mapping 2016-2036  
**Sunshine Coast Council**  
**SA2**  
**Caloundra West**

Findings			
Primary		Secondary	
1st Decade to 2026	2nd Decade to 2036	1st Decade to 2026	2nd Decade to 2036
2-3 new primary schools may be required in the first decade	3-4 new primary schools may be required in the second decade	2-3 new secondary schools may be required in the first decade	1-2 new secondary schools may be required in the second decade



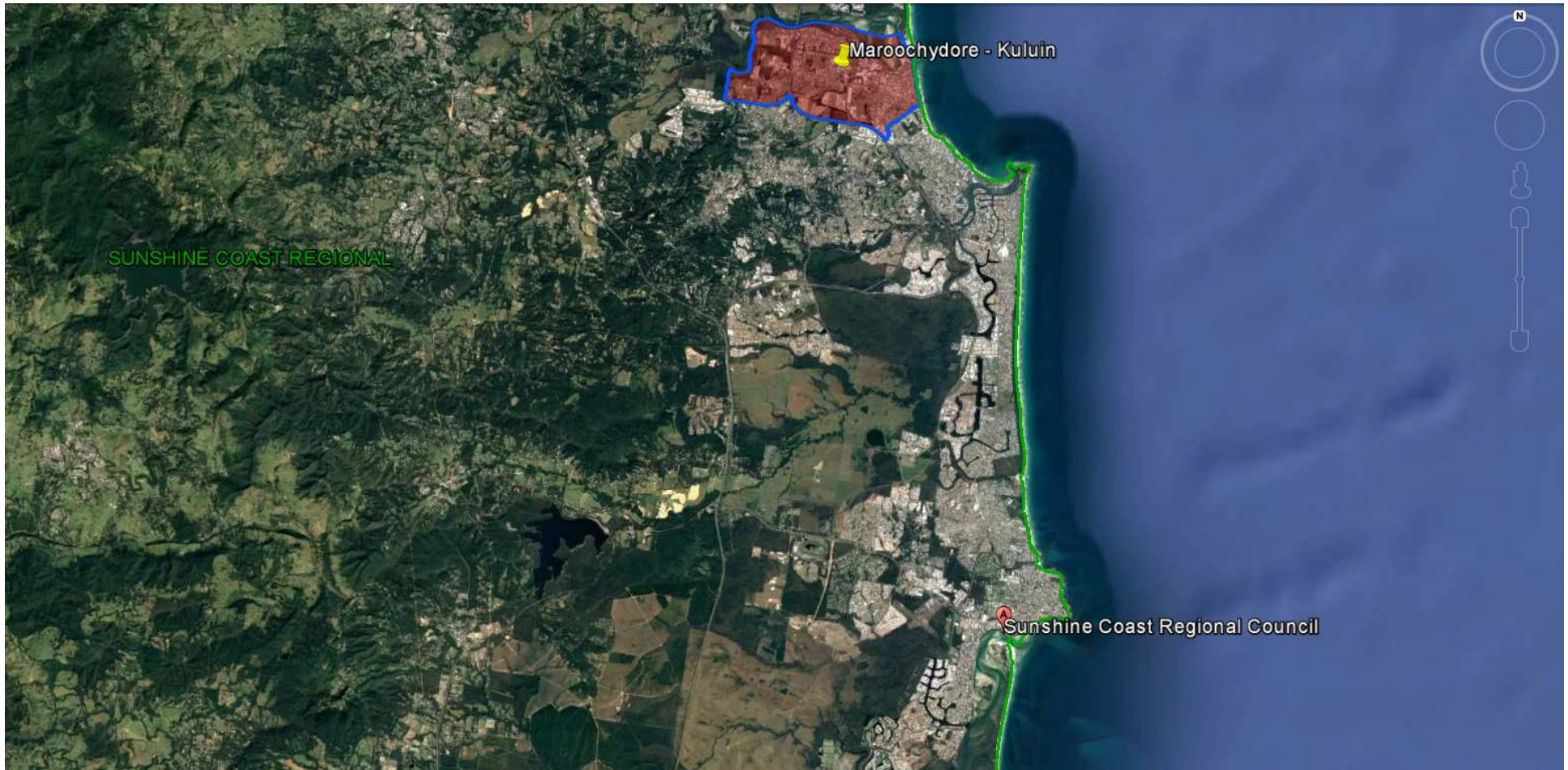
Queensland Schools Planning Reference Committee  
 Cross-Sectoral New Schools Demand Mapping 2016-2036  
**Sunshine Coast Council**  
**SA2**  
**Landsborough**

Findings			
Primary		Secondary	
1st Decade to 2026	2nd Decade to 2036	1st Decade to 2026	2nd Decade to 2036
2-4 new primary schools may be required in the first decade	3-4 new primary schools may be required in the second decade	2-3 new secondary schools may be required in the first decade	2-3 new secondary schools may be required in the second decade



Queensland Schools Planning Reference Committee  
 Cross-Sectoral New Schools Demand Mapping 2016-2036  
**Sunshine Coast Council**  
**SA2 Cluster**  
**Sippy Downs; Mountain Creek**

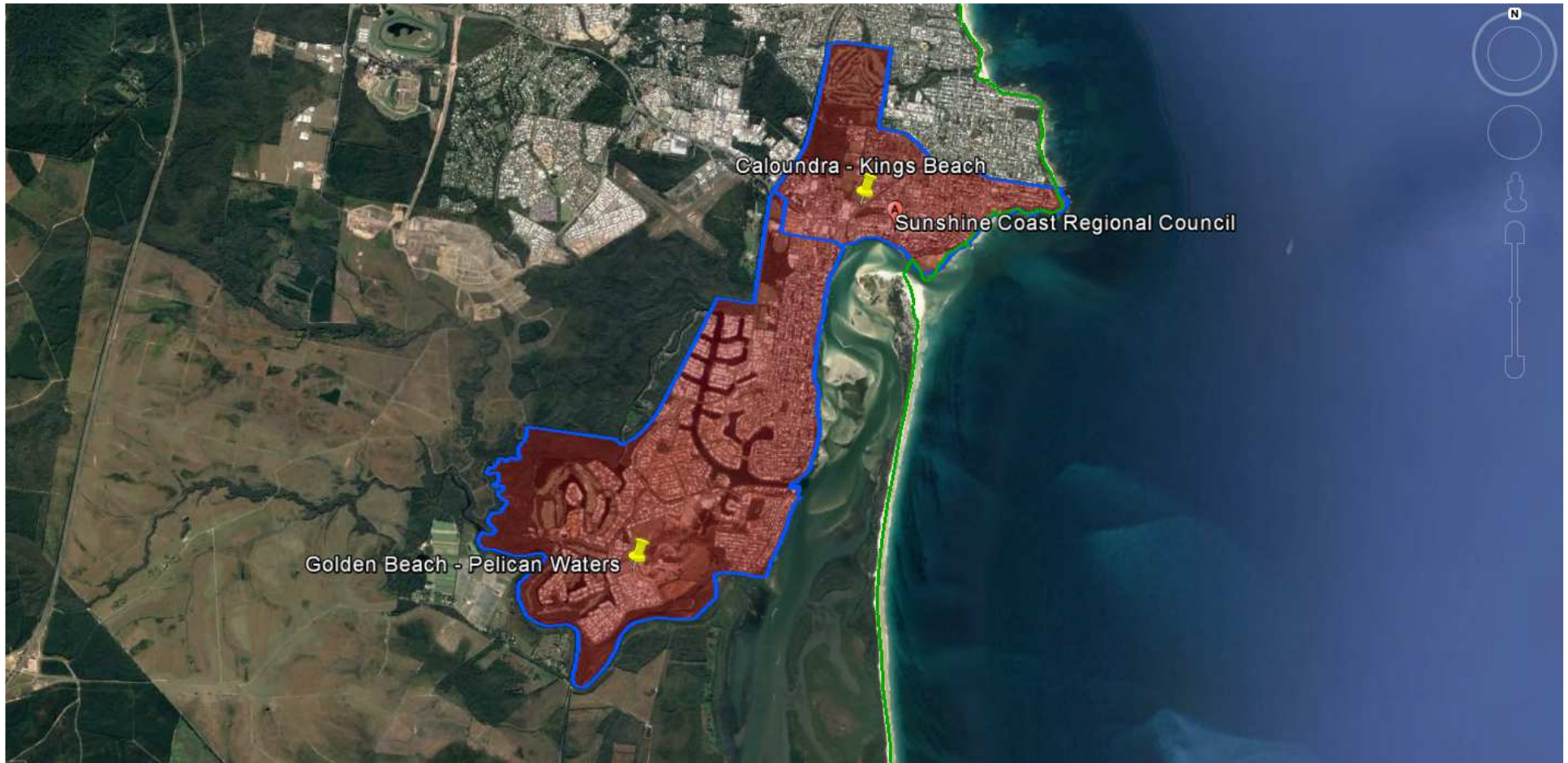
Findings			
Primary		Secondary	
1st Decade to 2026	2nd Decade to 2036	1st Decade to 2026	2nd Decade to 2036
1-2 new primary schools may be required in the first decade	0-1 new primary school may be required in the second decade	0-1 new secondary school may be required in the first decade	0 - 1 new secondary school may be required in the second decade



Queensland Schools Planning Reference Committee  
 Cross-Sectoral New Schools Demand Mapping 2016-2036  
**Sunshine Coast Council**  
**SA2**  
**Maroochydore- Kuluin**

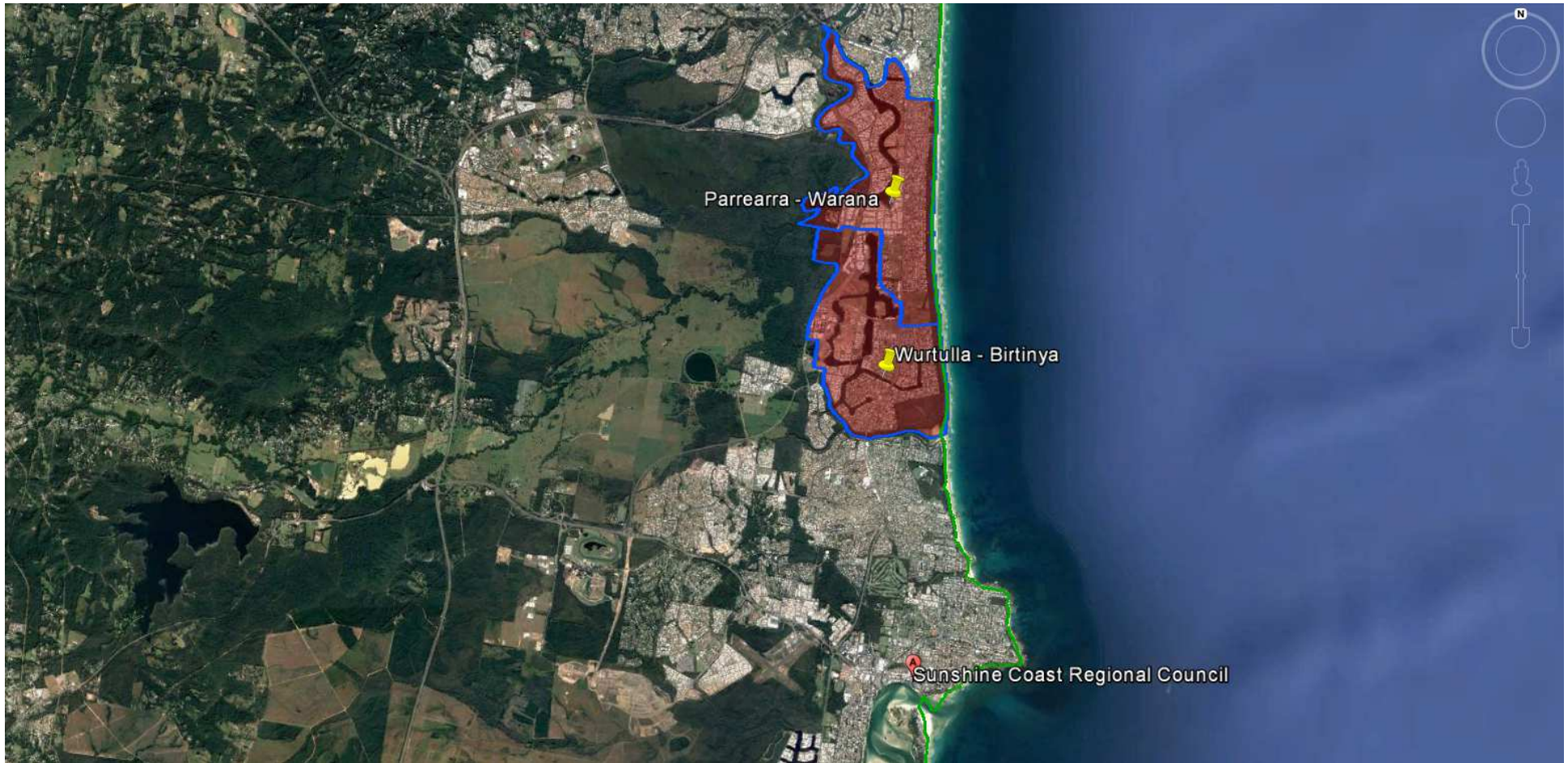
**Findings**

Primary		Secondary	
1st Decade to 2026	2nd Decade to 2036	1st Decade to 2026	2nd Decade to 2036
No new primary schools are likely to be required in the first decade. Expansion of existing sites likely to capture growth	No new primary schools are likely to be required in the second decade. Expansion of existing sites likely to capture growth	No new secondary schools are likely to be required in the first decade. Expansion of existing sites likely to capture growth	No new secondary schools are likely to be required in the second decade. Expansion of existing sites likely to capture growth



Queensland Schools Planning Reference Committee  
 Cross-Sectoral New Schools Demand Mapping 2016-2036  
**Sunshine Coast Council**  
**SA2 Cluster**  
**Caloundra-Kings Beach; Golden Beach-Pelican Waters**

Findings			
Primary		Secondary	
1st Decade to 2026	2nd Decade to 2036	1st Decade to 2026	2nd Decade to 2036
No new primary schools are likely to be required in the first decade. Expansion of existing sites likely to capture growth	No new primary schools are likely to be required in the second decade. Expansion of existing sites likely to capture growth	No new secondary schools are likely to be required in the first decade. Expansion of existing sites likely to capture growth	No new secondary schools are likely to be required in the second decade. Expansion of existing sites likely to capture growth

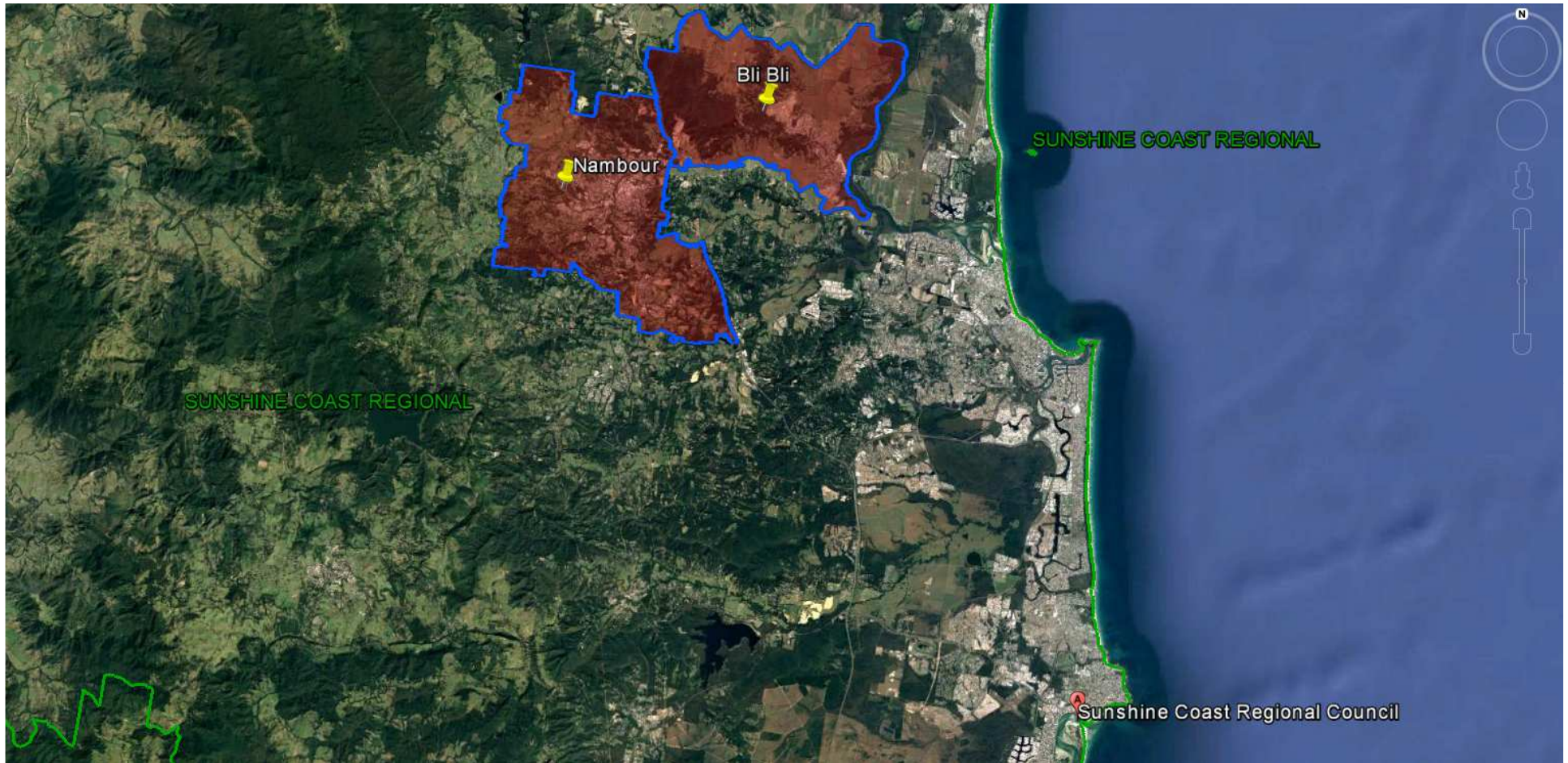


Queensland Schools Planning Reference Committee  
 Cross-Sectoral New Schools Demand Mapping 2016-2036  
**Sunshine Coast Council**  
**SA2 Cluster**  
**Parrearra-Warana; Wurtulla-Birtinya**

**Findings**

Primary		Secondary	
1st Decade to 2026	2nd Decade to 2036	1st Decade to 2026	2nd Decade to 2036
No new primary schools are likely to be required in the first decade. Expansion of existing sites likely to capture growth	No new primary schools are likely to be required in the second decade. Expansion of existing sites likely to capture growth	No new secondary schools are likely to be required in the first decade. Expansion of existing sites likely to capture growth	No new secondary schools are likely to be required in the second decade. Expansion of existing sites likely to capture growth





Queensland Schools Planning Reference Committee  
 Cross-Sectoral New Schools Demand Mapping 2016-2036  
**Sunshine Coast Council**  
**SA2 Cluster**  
**Nambour; Bli Bli**

Findings

Primary		Secondary	
1st Decade to 2026	2nd Decade to 2036	1st Decade to 2026	2nd Decade to 2036
0-1 new primary school may be required in the first decade	No new primary schools are likely to be required in the second decade. Expansion of existing sites likely to capture growth	0-1 new secondary school may be required in the first decade	No new secondary schools are likely to be required in the second decade