

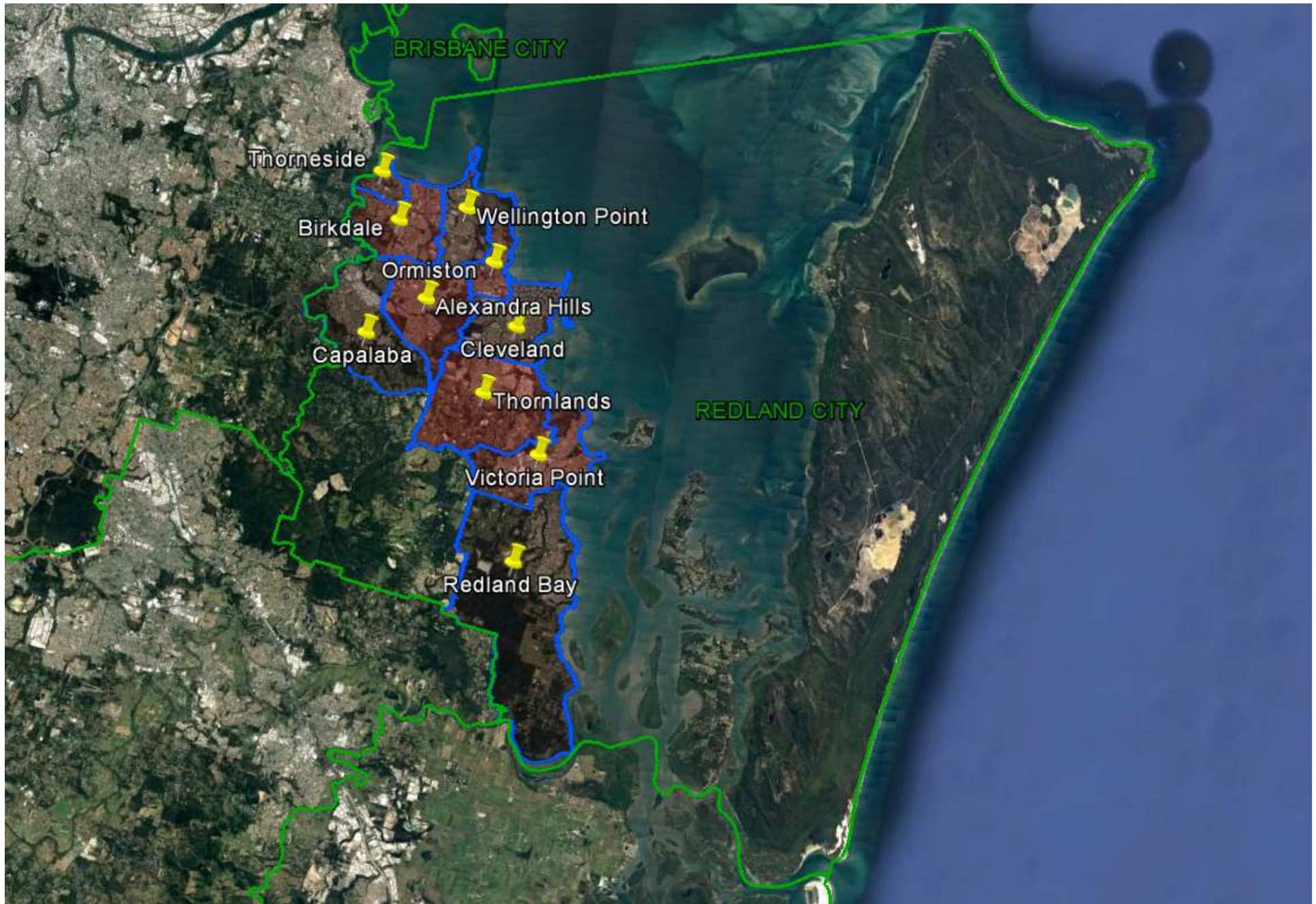
Queensland Schools Planning Reference Committee
Cross-Sectoral New Schools Demand Mapping
2016-2036

Redland City Council

2 May 2018

Investigated SA2

- Redland Bay; Victoria Point
- Thornlands; Cleveland; Ormiston
 - Capalaba; Alexandra Hills
- Wellington Point; Birkdale; Thorneside



Queensland Schools Planning Reference Committee
SA2 studied in the Redland City Council area



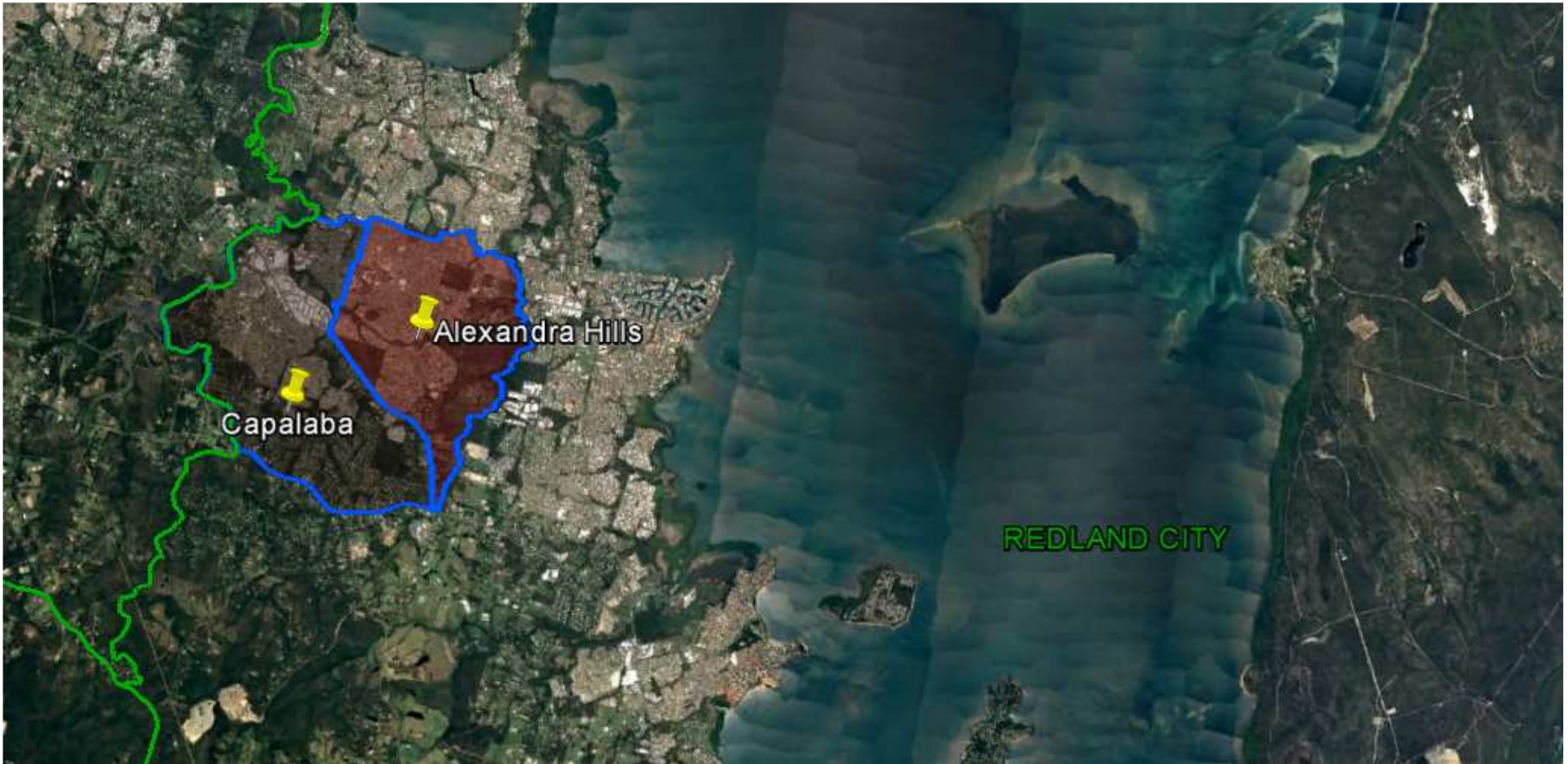
Queensland Schools Planning Reference Committee
 Cross-Sectoral New Schools Demand Mapping 2016-2036
Redland City Council
SA2 Cluster
Redland Bay; Victoria Point

Findings			
Primary		Secondary	
1st Decade to 2026	2nd Decade to 2036	1st Decade to 2026	2nd Decade to 2036
No new primary schools are likely to be required in the first decade. Expansion of existing sites likely to capture growth	1 new primary school may be required in the second decade	No new secondary schools are likely to be required in the first decade. Expansion of existing sites likely to capture growth	0 - 1 new secondary school may be required in the second decade



Queensland Schools Planning Reference Committee
 Cross-Sectoral New Schools Demand Mapping 2016-2036
Redland City Council
SA2 Cluster
Thornlands; Cleveland; Ormiston

Findings			
Primary		Secondary	
1st Decade to 2026	2nd Decade to 2036	1st Decade to 2026	2nd Decade to 2036
No new primary schools are likely to be required in the first decade. Expansion of existing sites likely to capture growth	0-1 new primary school may be required in the second decade	No new secondary schools are likely to be required in the first decade. Expansion of existing sites likely to capture growth	No new secondary schools are likely to be required in the second decade. Expansion of existing sites likely to capture growth



Queensland Schools Planning Reference Committee
 Cross-Sectoral New Schools Demand Mapping 2016-2036
Redland City Council
SA2 Cluster
Capalaba; Alexandra Hills

Findings			
Primary		Secondary	
1st Decade to 2026	2nd Decade to 2036	1st Decade to 2026	2nd Decade to 2036
No new primary schools are likely to be required in the first decade. Expansion of existing sites likely to capture growth	No new primary schools are likely to be required in the second decade. Expansion of existing sites likely to capture growth	No new secondary schools are likely to be required in the first decade. Expansion of existing sites likely to capture growth	No new secondary schools are likely to be required in the second decade. Expansion of existing sites likely to capture growth



Queensland Schools Planning Reference Committee
 Cross-Sectoral New Schools Demand Mapping 2016-2036
Redland City Council
SA2 Cluster
Wellington Point; Birkdale; Thorneside

Findings			
Primary		Secondary	
1st Decade to 2026	2nd Decade to 2036	1st Decade to 2026	2nd Decade to 2036
No new primary schools are likely to be required in the first decade. Expansion of existing sites likely to capture growth	No new primary schools are likely to be required in the second decade. Expansion of existing sites likely to capture growth	No new secondary schools are likely to be required in the first decade. Expansion of existing sites likely to capture growth	No new secondary schools are likely to be required in the second decade. Expansion of existing sites likely to capture growth