

## Queensland Schools Planning Reference Committee – Cross-Sectoral New Schools Demand Mapping 2021 to 2041 Logan City Council – 21 June 2019

New school recommendations reflect the potential need of new state and non-state primary and secondary schools based on an assessment of the 2018 edition Queensland Government population projections, local advice on population growth and available capacity within the existing school network. The growth SA2s, shown below, were selected for detailed assessment during the Demand Mapping Meeting. Areas for assessment are comprised of one or more Statistical Areas Level 2 (SA2s) which are established by the Australian Bureau of Statistics and are the smallest statistical area commonly used for a range of statistical information including population projections. Population projections used to inform this assessment are prepared by the Queensland Government Statistician's Office and can be accessed [here](#).

SA2 or Cluster	New government and non-government schools that may be required:				Estimated and Projected Primary (ages 5-11) and Secondary (ages 12-17) School-Age Population					
	2021 to 2031		2031 to 2041		Population 2016		Growth 2021 to 2031		Growth 2031 to 2041	
	Primary	Secondary	Primary	Secondary	Primary	Secondary	Primary	Secondary	Primary	Secondary
Greenbank SA2 (includes the Greater Flagstone Priority Development Area)	3 - 4	2 - 3	3 - 5	2 - 4	1,596	1,350	2,120	1,607	3,450	3,104
Jimboomba SA2 (includes the Yarrabilba Priority Development Area)	3 - 4	2 - 3	2 - 4	1 - 2	3,278	2,558	2,930	2,705	2,544	1,990
Boronia Heights-Park Ridge, Chambers Flat-Logan Reserve, Munruben-Park Ridge South SA2s	2	1	2 - 3	1 - 2	2,166	1,856	998	976	2,063	1,755
Beenleigh, Bethania-Waterford, Edens Landing-Holmview, Wolffdene-Bahrs Scrub SA2s	1	0	0	0	3,344	2,522	700	822	348	322
Kingston, Logan Central, Loganlea SA2s	0	0	0	0	3,061	2,504	95	104	405	327
<b>TOTAL</b>	<b>9 - 11</b>	<b>5 - 7</b>	<b>7 - 12</b>	<b>4 - 8</b>						

Note: Recommendations do not include new schools opening in 2020.



Map of Logan City Council showing the Statistical Areas Level 2 Assessed

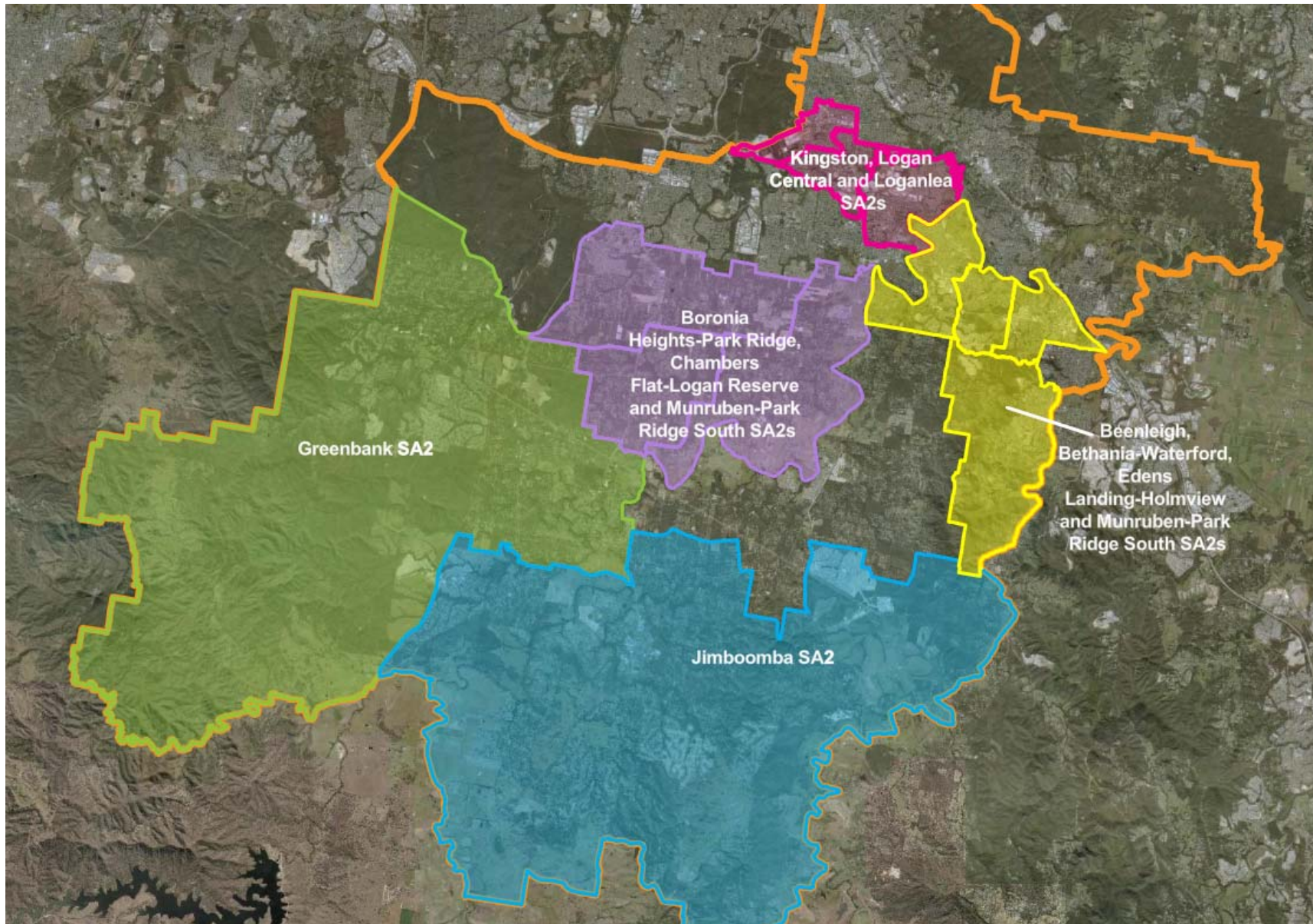


Image from Queensland Globe.



Queensland  
Government