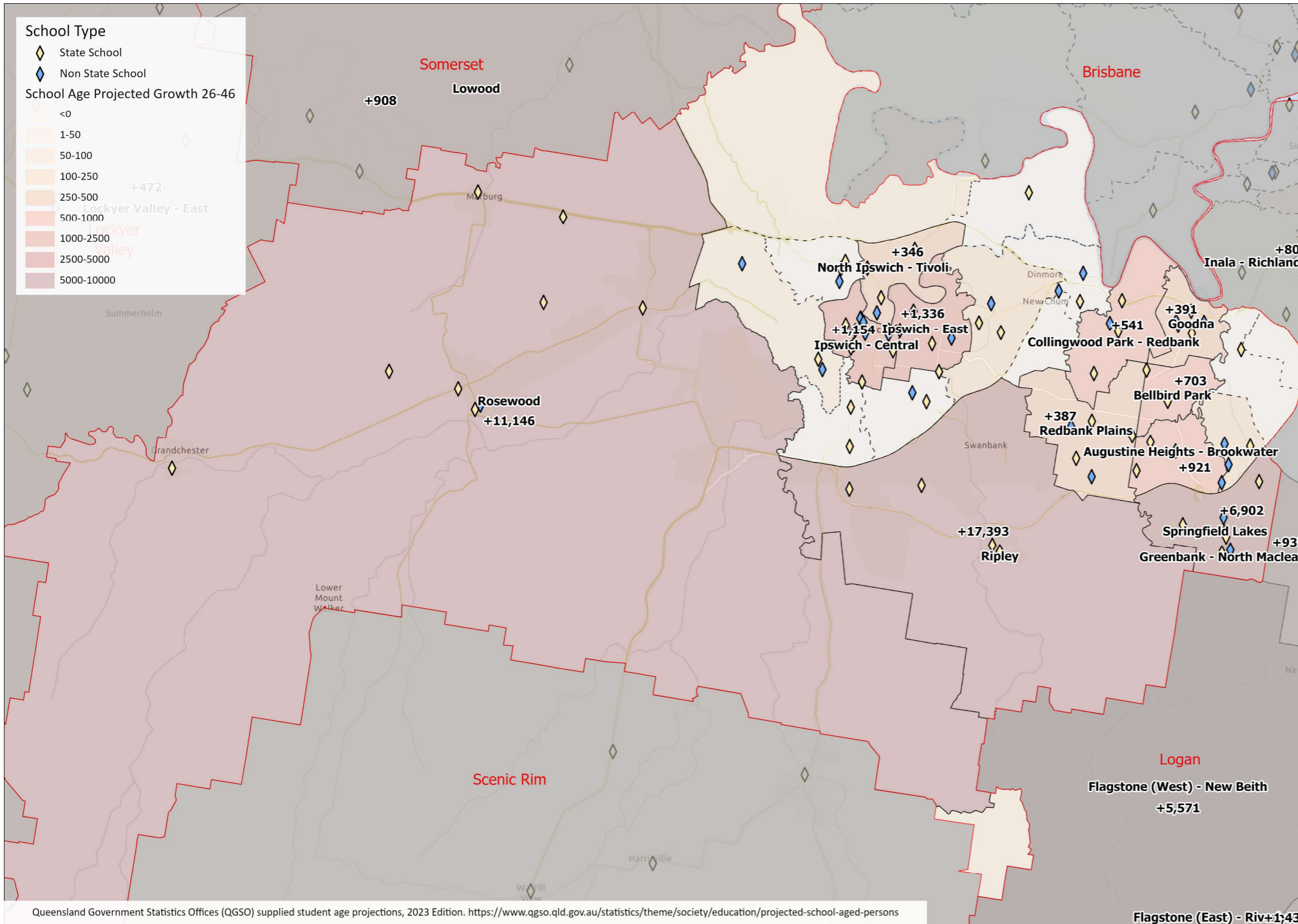


Queensland Schools Planning Reference Committee Cross-Sectoral New Schools Demand Mapping 2026 to 2046



City of Ipswich
Monday 30 October 2023

New government and non-government schools that may be required

SA2 or Cluster	2026 to 2036		2036 to 2046		Commentary
	Primary	Secondary	Primary	Secondary	
Ripley	4-5	2-3	5-6	2-3	Some spare capacity with new state primary school opening this year.
Rosewood	2-3	1	4-5	2	Some spare capacity in network and ability to expand some existing schools. Growth to 2026 might be a bit higher than currently projected.
Springfield Lakes, Springfield and Augustine Heights – Bellbird Park	2-3	1	2-3	2	Future growth through higher density development.
Ipswich – Central and Ipswich - East	0	0	1-2	0-1	Some capacity in network.
Bellbird Park, Redbank Plains, Collingwood Park – Redbank and Goodna	0	0	1	0	A number of recent new primary schools and further schools opening 2024 and 2025 will support projected growth in the network.

Queensland Government Statistics Offices (QGSO) supplied student age projections, 2023 Edition. <https://www.qgso.qld.gov.au/statistics/theme/society/education/projected-school-aged-persons>

New school recommendations reflect the potential need of new state and non-state primary and secondary schools based on an assessment of the 2023 edition Queensland Government population projections, local advice on population growth and available capacity within the existing school network. The growth SA2s, shown above, were selected for detailed assessment during the Demand Mapping Meeting. Areas for assessment are comprised of one or more Statistical Areas Level 2 (SA2s) which are established by the Australian Bureau of Statistics and are the smallest statistical area commonly used for a range of statistical information including population projections. Population projections used to inform this assessment are prepared by the Queensland Government Statistician’s Office and can be accessed [here](#).