

Queensland Schools Planning Reference Committee – Cross-Sectoral New Schools Demand Mapping 2021 to 2041 City of Gold Coast Council – 26 July 2019

New school recommendations reflect the potential need of new state and non-state primary and secondary schools based on an assessment of the 2018 edition Queensland Government population projections, local advice on population growth and available capacity within the existing school network. The growth SA2s, shown below, were selected for detailed assessment during the Demand Mapping Meeting. Areas for assessment are comprised of one or more Statistical Areas Level 2 (SA2s) which are established by the Australian Bureau of Statistics and are the smallest statistical area commonly used for a range of statistical information including population projections. Population projections used to inform this assessment are prepared by the Queensland Government Statistician's Office and can be accessed [here](#).

SA2 or Cluster	New government and non-government schools that may be required:				Estimated and Projected Primary (ages 5-11) and Secondary (ages 12-17) School-Age Population					
	2021 to 2031		2031 to 2041		Population 2016		Growth 2021 to 2031		Growth 2031 to 2041	
	Primary	Secondary	Primary	Secondary	Primary	Secondary	Primary	Secondary	Primary	Secondary
Coomera and Pimpama SA2s	4	1	2-4	2-3	3,100	1,870	4,585	3,880	3,640	3,083
Southport-North, Southport-South, Labrador and Biggera Waters SA2s	0-1	1	1-2	1	3,533	3,250	1,049	1,108	1,554	1,462
Helensvale, Hope Island, and Paradise Point-Hollywell SA2s	0-1	0-1	1	1	3,065	2,940	635	706	786	840
Worongary-Tallai, Highland Park and Nerang-Mount Nathan SA2s	0-1	0-1	0-1	0-1	3,564	2,831	940	995	507	491
Surfers Paradise and Mermaid Beach-Broadbeach SA2s	1-2	0-1	0-2	0-1	1,351	1,267	440	552	639	656
Ormeau-Yatala SA2	0	1	0-1	0	2,606	1,938	347	295	470	435
Upper Coomera-Willowvale SA2	0	0	0	0	4,267	2,970	673	707	207	226
Palm Beach and Currumbin-Tugun SA2s	0-1	0-1	0-1	0-1	2,042	1,706	328	351	289	314
Varsity Lakes and Robina SA2s	0	0	0	0	3,396	3,024	261	390	200	257
TOTAL	5-10	3-7	4-12	4-8						

Note: Recommendations do not include new schools opening in 2020.

Map of City of Gold Coast Council showing the Statistical Areas Level 2 Assessed

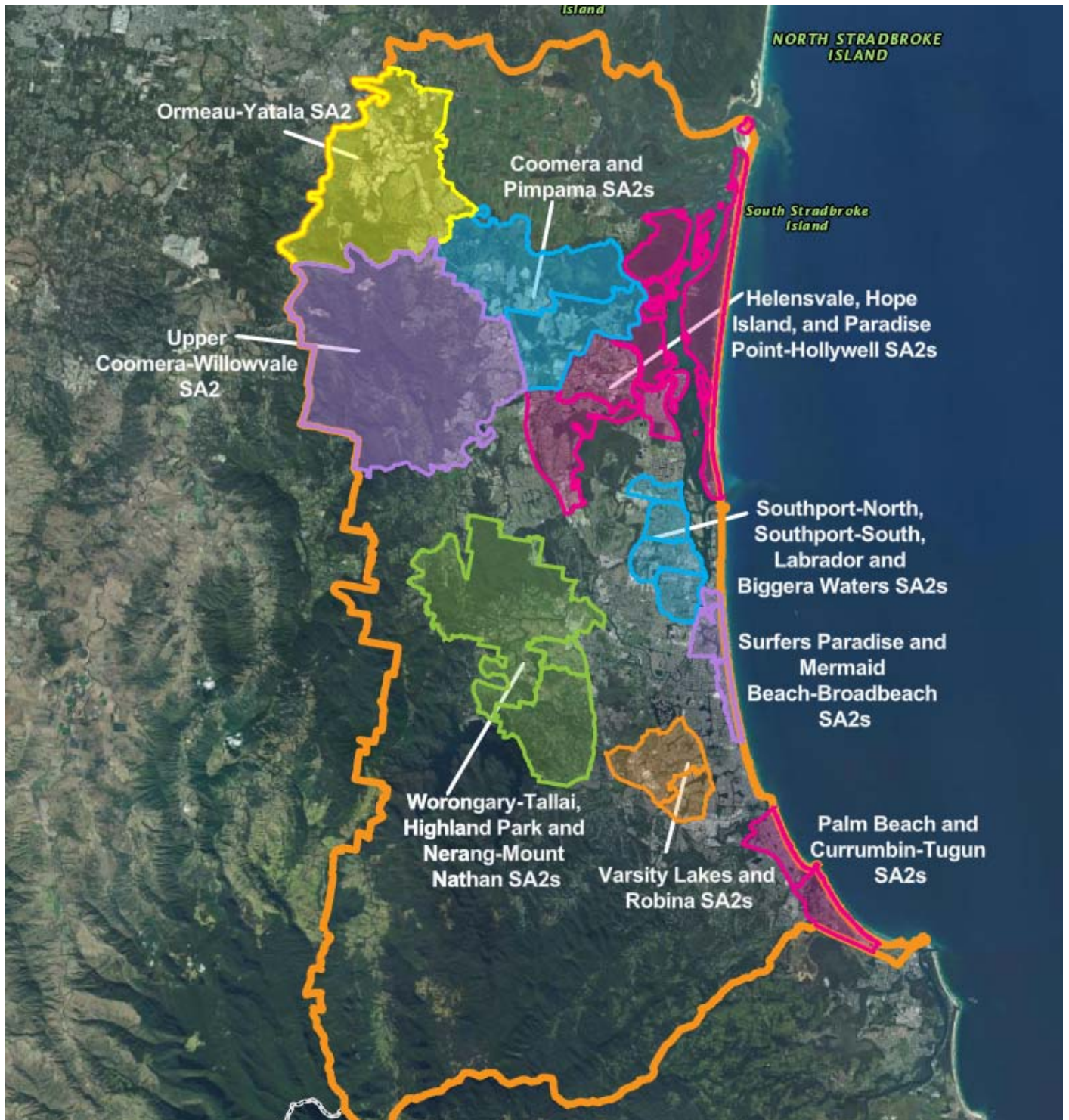


Image from Queensland Globe.

