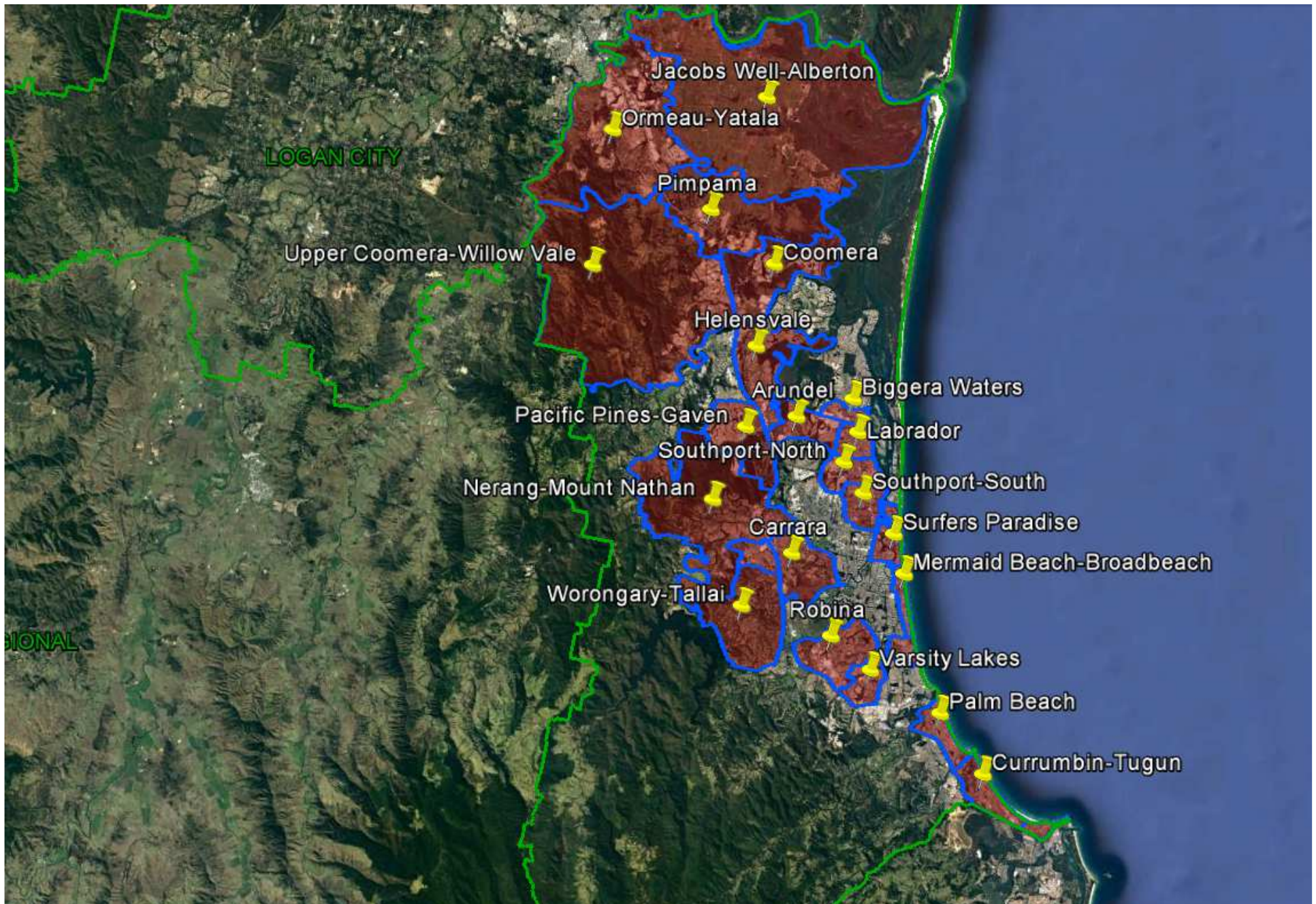


Queensland Schools Planning Reference Committee
Cross-Sectoral New Schools Demand Mapping
2016-2036

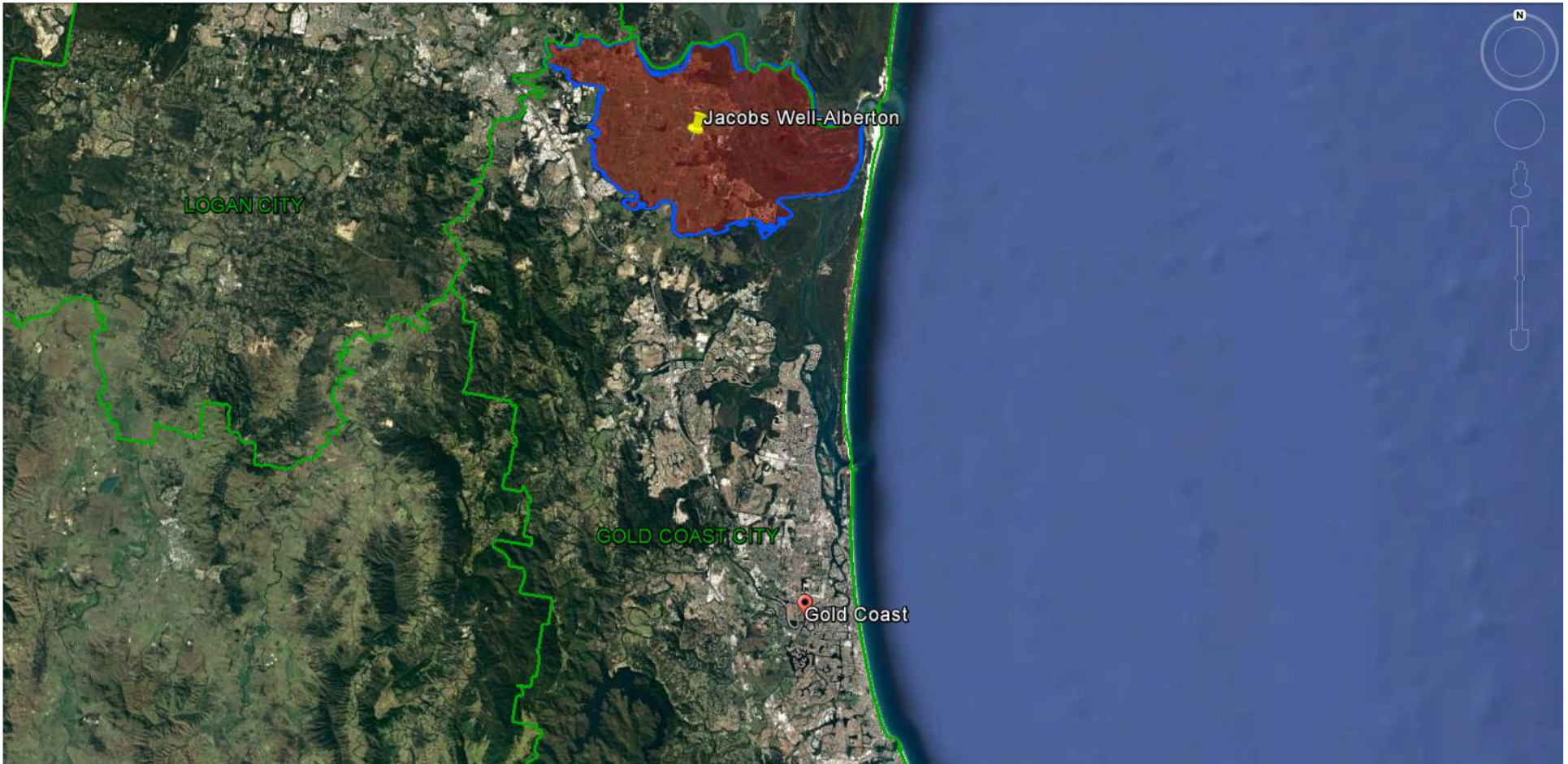
Gold Coast City Council

Investigated SA2

- Jacobs Well - Alberton
 - Ormeau - Yatala
- Upper Coomera - Willow Vale
 - Pimpama; Coomera
 - Helensvale
- Arundel; Biggera Waters; Labrador; Southport-North; Southport-South
 - Surfers Paradise; Mermaid Beach - Broadbeach
 - Pacific Pines - Gaven
 - Nerang - Mount Nathan
 - Worongary - Tallai
 - Carrara
 - Robina; Varsity Lakes
 - Palm Beach; Currumbin - Tugun

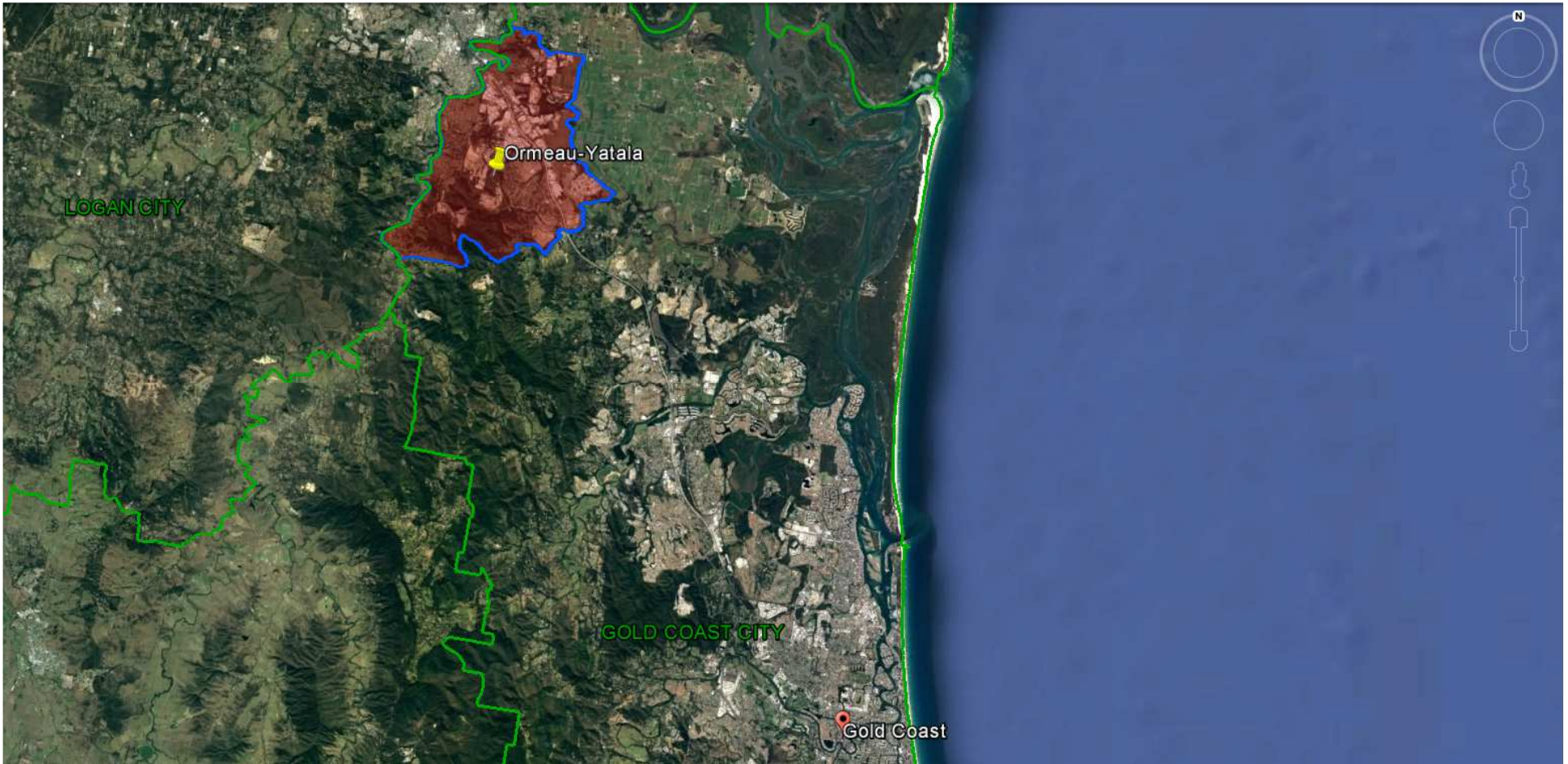


Queensland Schools Planning Reference Committee
SA2 studied in the Gold Coast City Council area



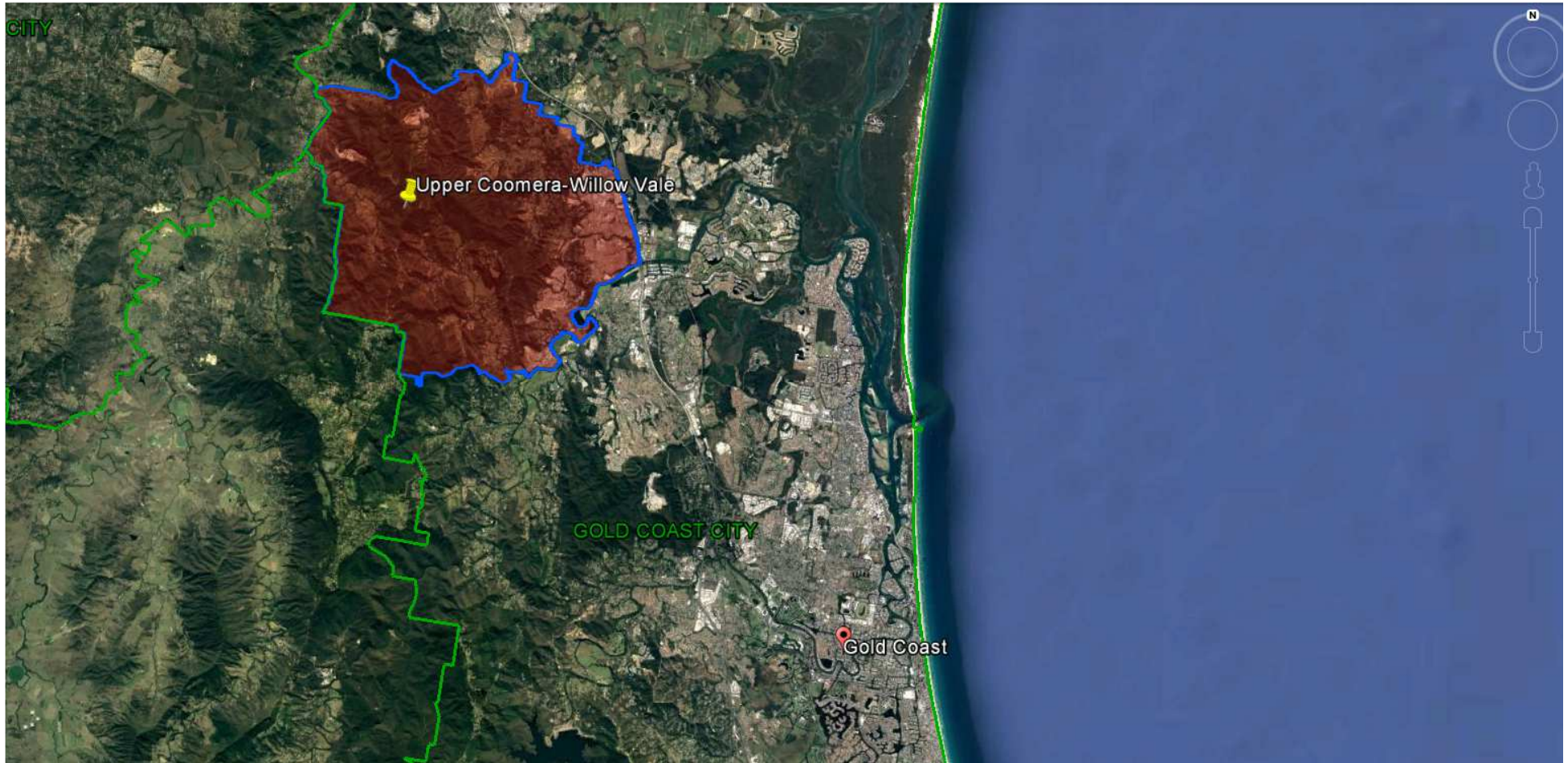
Queensland Schools Planning Reference Committee
 Cross-Sectoral New Schools Demand Mapping 2016-2036
Gold Coast City Council
SA2
Jacobs Well-Alberton

Findings			
Primary		Secondary	
1st Decade to 2026	2nd Decade to 2036	1st Decade to 2026	2nd Decade to 2036
No new primary schools are likely to be required in the first decade	No new primary schools are likely to be required in the second decade	No new secondary schools are likely to be required in the first decade	No new secondary schools are likely to be required in the second decade



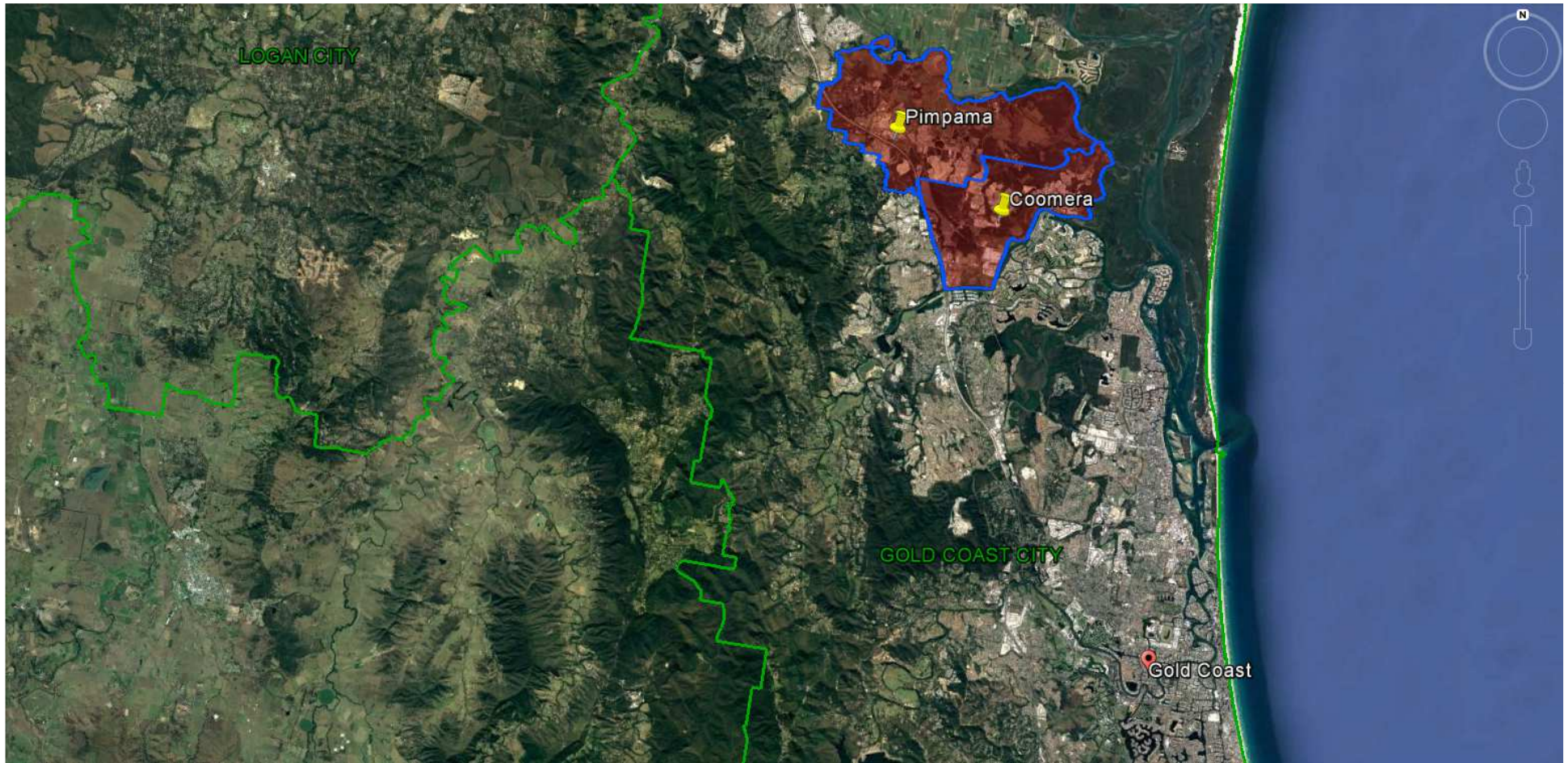
Queensland Schools Planning Reference Committee
 Cross-Sectoral New Schools Demand Mapping 2016-2036
Gold Coast City Council
SA2
Ormeau-Yatala

Findings			
Primary		Secondary	
1st Decade to 2026	2nd Decade to 2036	1st Decade to 2026	2nd Decade to 2036
No new primary schools are likely to be required in the first decade	No new primary schools are likely to be required in the second decade	No new secondary schools are likely to be required in the first decade	No new secondary schools are likely to be required in the second decade



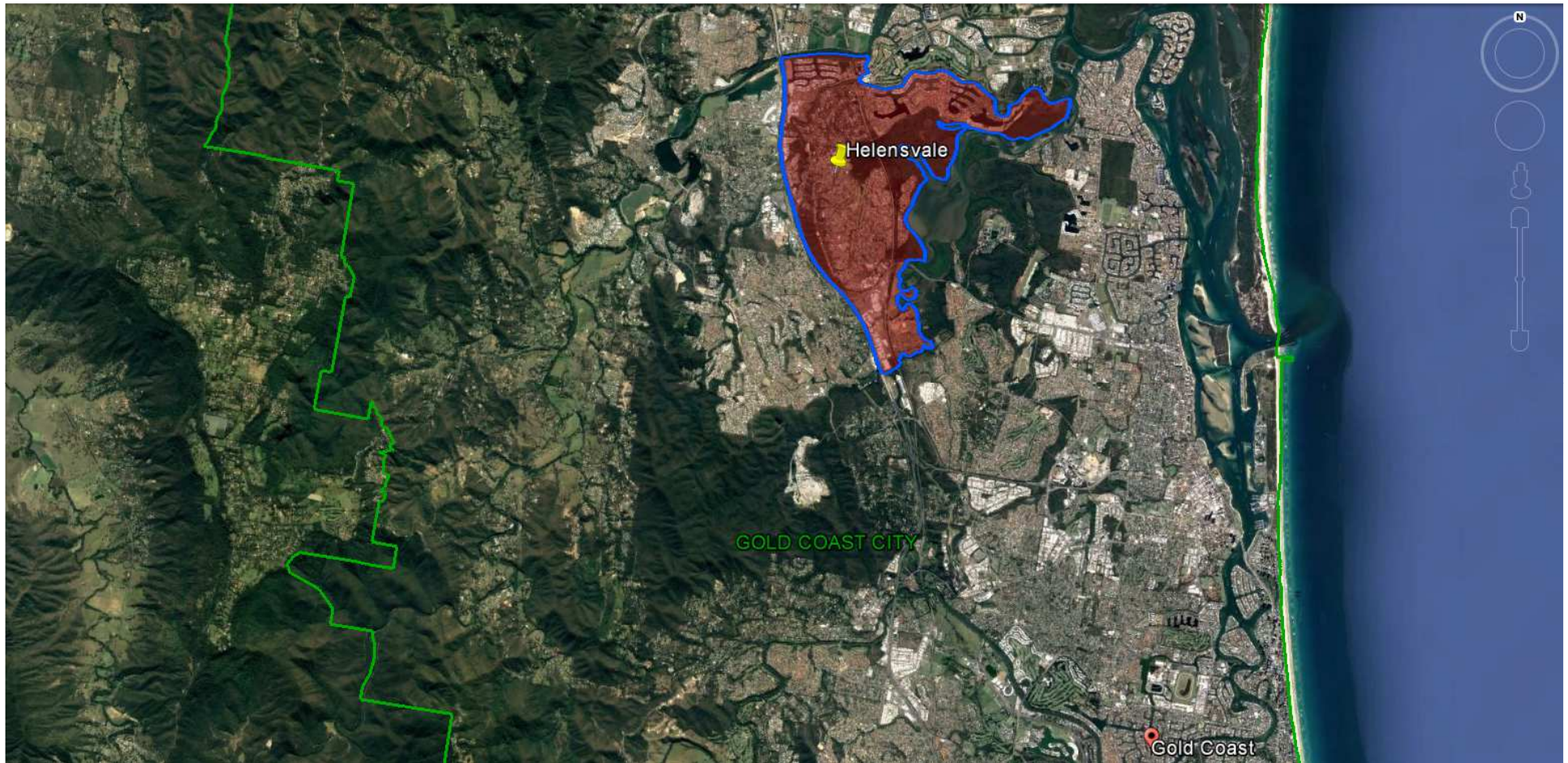
Queensland Schools Planning Reference Committee
 Cross-Sectoral New Schools Demand Mapping 2016-2036
Gold Coast City Council
SA2
Upper Coomera-Willow Vale

Findings			
Primary		Secondary	
1st Decade to 2026	2nd Decade to 2036	1st Decade to 2026	2nd Decade to 2036
No new primary schools are likely to be required in the first decade	No new primary schools are likely to be required in the second decade	No new secondary schools are likely to be required in the first decade	No new secondary schools are likely to be required in the second decade



Queensland Schools Planning Reference Committee
 Cross-Sectoral New Schools Demand Mapping 2016-2036
Gold Coast City Council
SA2 Cluster
Coomera; Pimpama

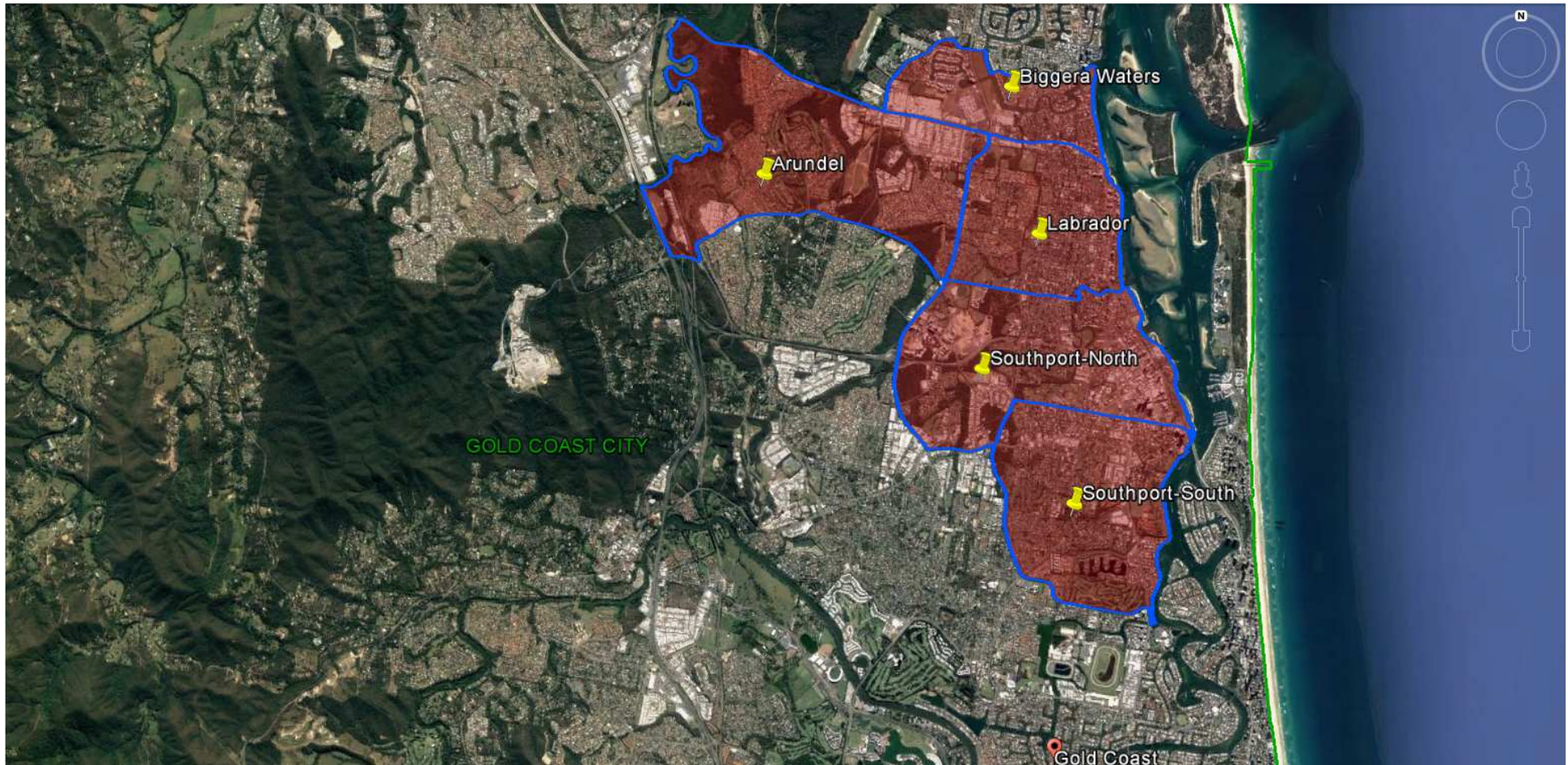
Findings			
Primary		Secondary	
1st Decade to 2026	2nd Decade to 2036	1st Decade to 2026	2nd Decade to 2036
4-5 new primary schools may be required in the first decade	4-6 new primary schools may be required in the second decade	2-3 new secondary schools may be required in the first decade	1-2 new secondary schools may be required in the second decade



Queensland Schools Planning Reference Committee
 Cross-Sectoral New Schools Demand Mapping 2016-2036
Gold Coast City Council
SA2
Helensvale

Findings

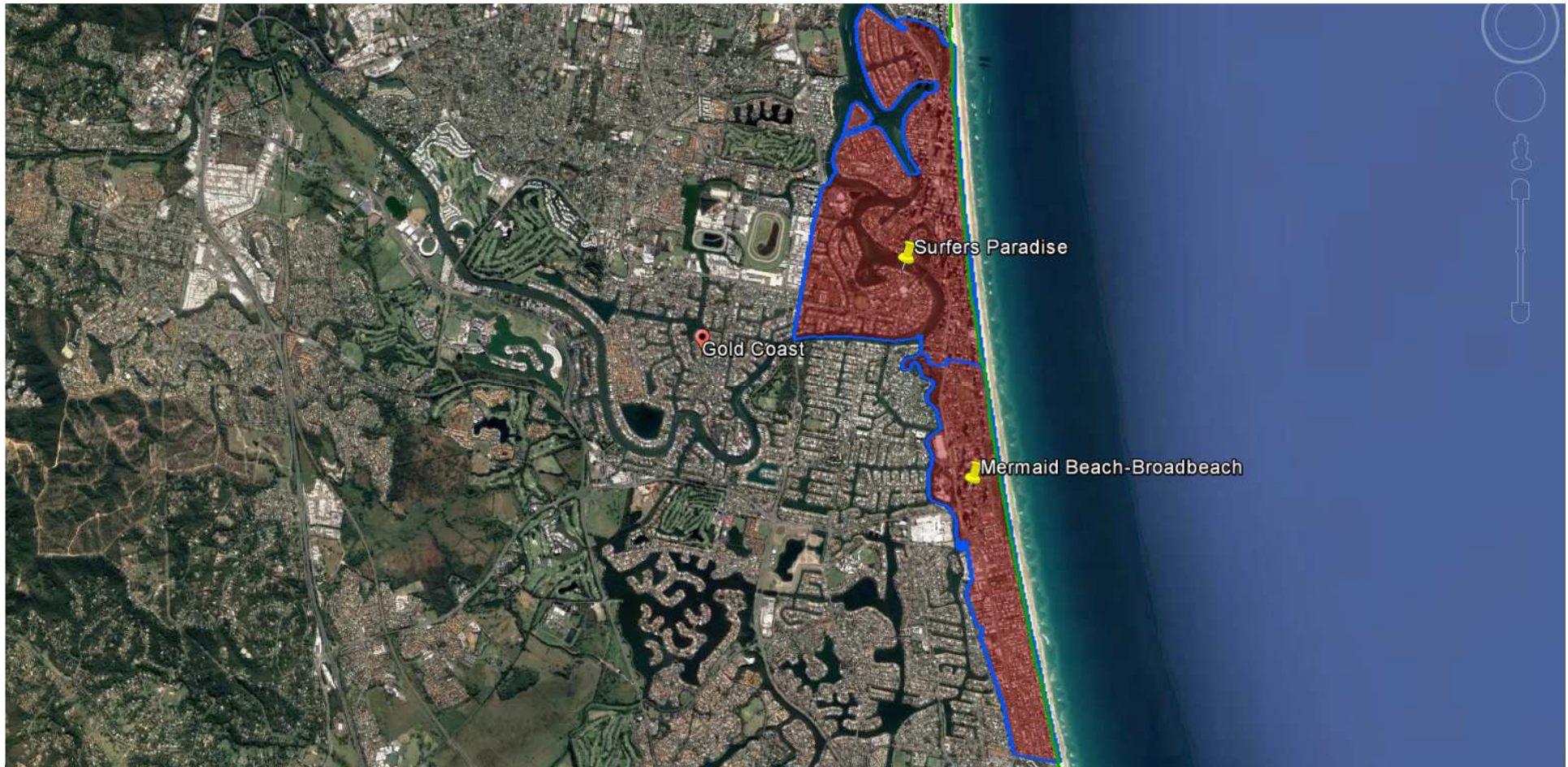
Primary		Secondary	
1st Decade to 2026	2nd Decade to 2036	1st Decade to 2026	2nd Decade to 2036
0-1 new primary school may be required in the first decade	0-1 new primary school may be required in the second decade	No new secondary schools are likely to be required in the first decade	No new secondary schools are likely to be required in the second decade



Queensland Schools Planning Reference Committee
 Cross-Sectoral New Schools Demand Mapping 2016-2036
Gold Coast City Council
SA2 Cluster

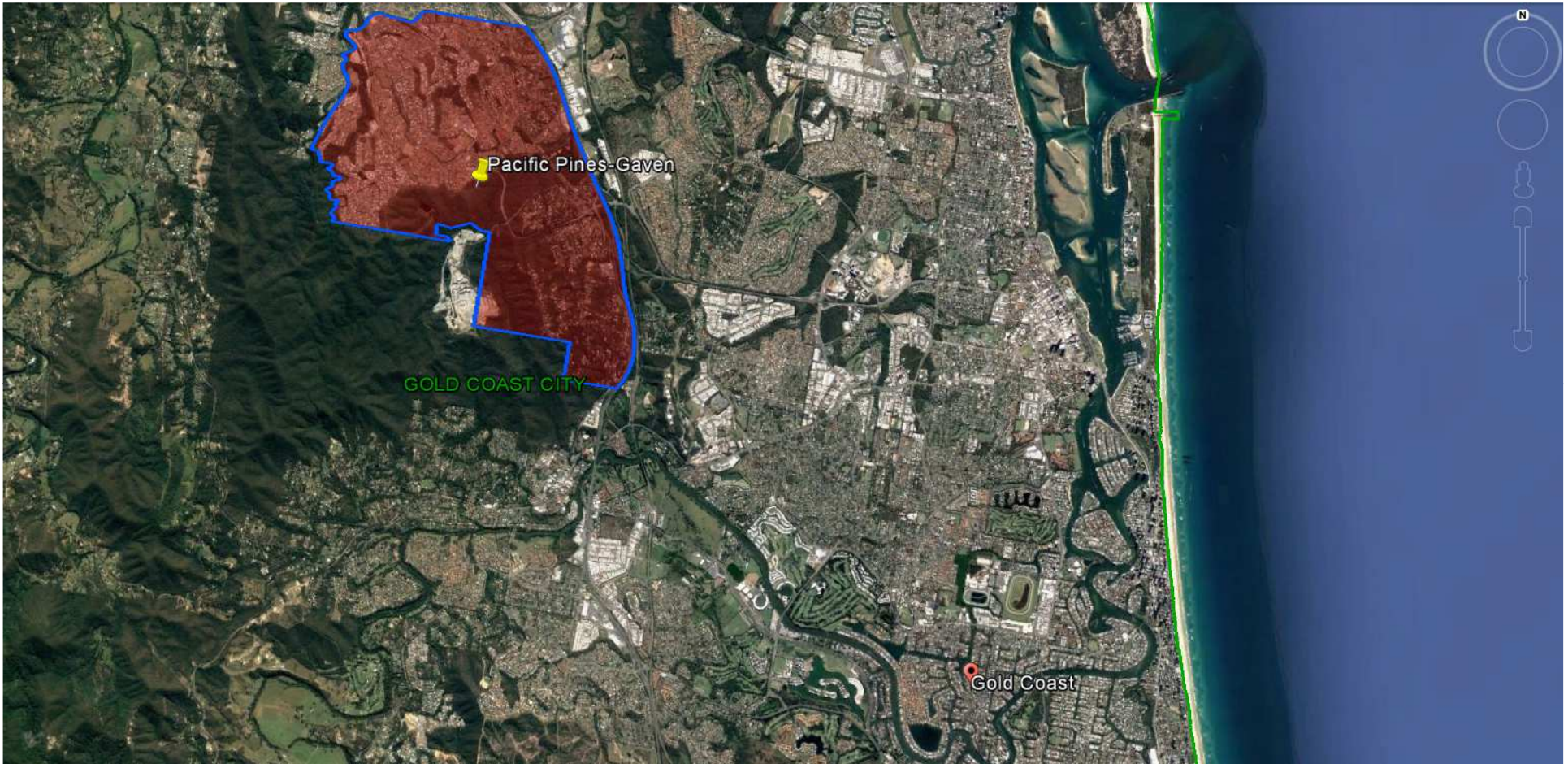
Arundel; Biggera Waters; Labrador; Southport-North; Southport-South

Findings			
Primary		Secondary	
1st Decade to 2026	2nd Decade to 2036	1st Decade to 2026	2nd Decade to 2036
0-1 new primary school may be required in the first decade	1-2 new primary schools may be required in the second decade	1-2 new secondary schools may be required in the first decade	0 - 1 new secondary school may be required in the second decade



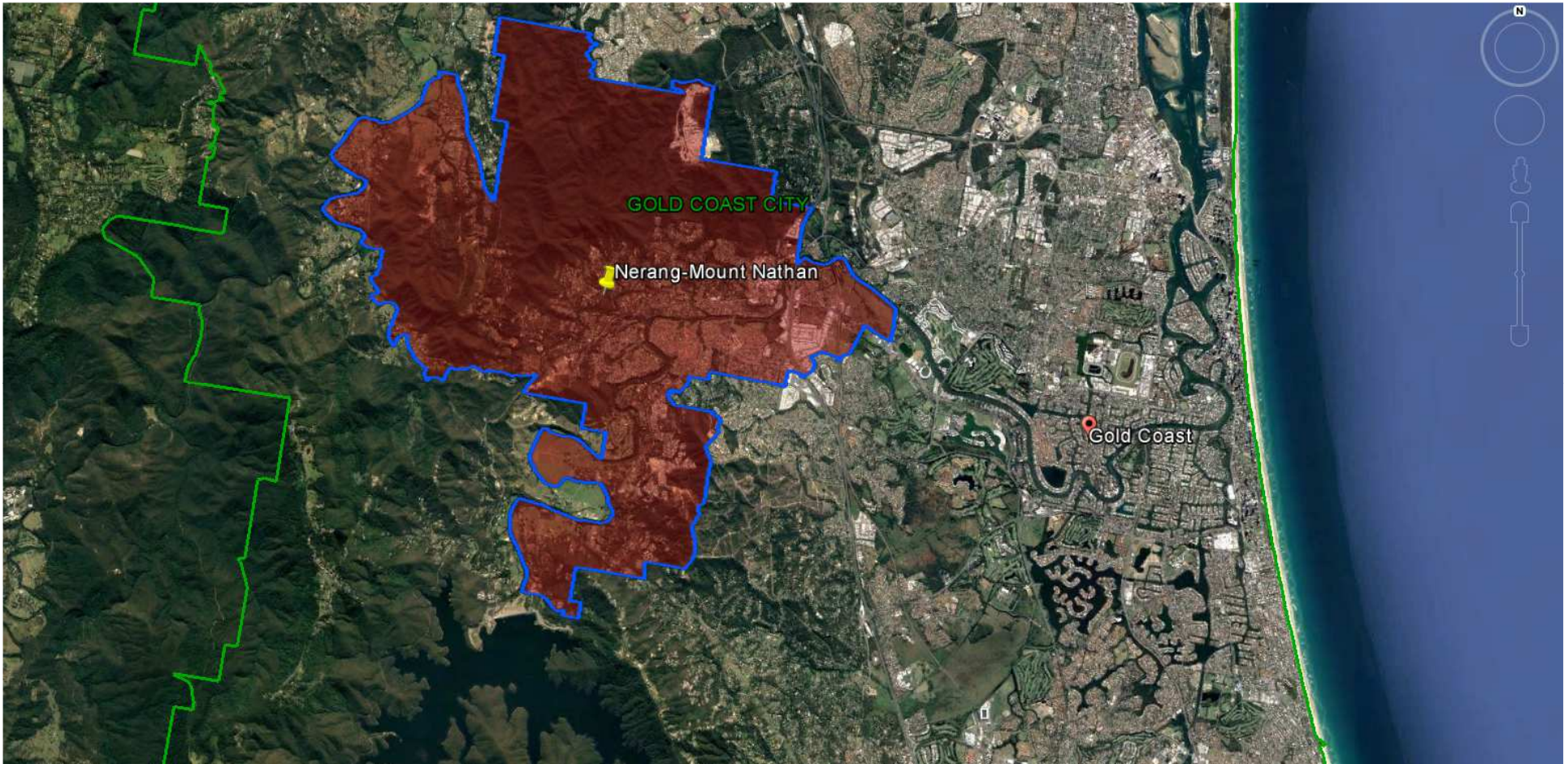
Queensland Schools Planning Reference Committee
 Cross-Sectoral New Schools Demand Mapping 2016-2036
Gold Coast City Council
SA2 Cluster
Surfers Paradise; Mermaid Beach-Broadbeach

Findings			
Primary		Secondary	
1st Decade to 2026	2nd Decade to 2036	1st Decade to 2026	2nd Decade to 2036
0-1 new primary school may be required in the first decade	0-1 new primary school may be required in the second decade	No new secondary schools are likely to be required in the first decade	No new secondary schools are likely to be required in the second decade



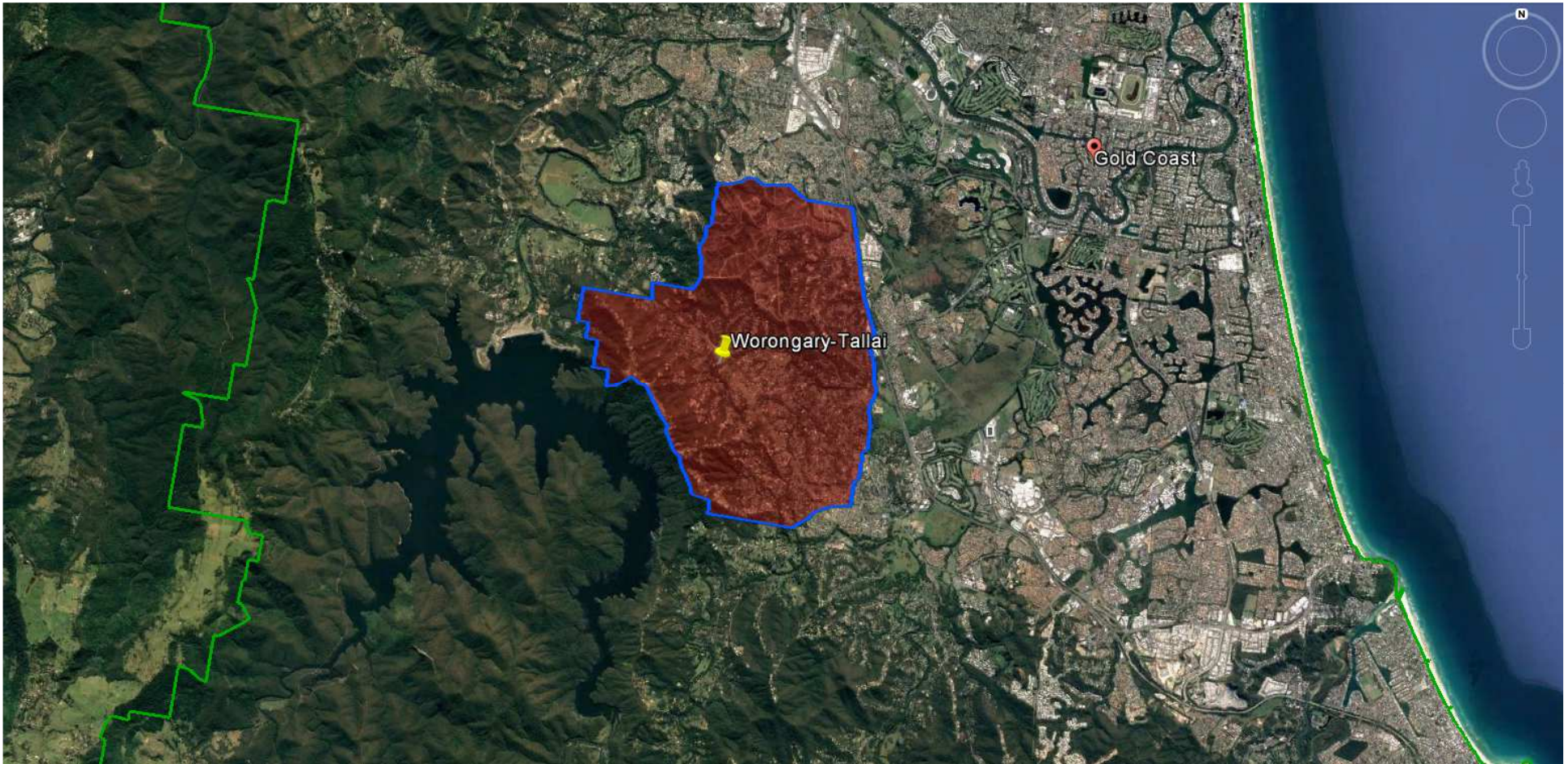
Queensland Schools Planning Reference Committee
 Cross-Sectoral New Schools Demand Mapping 2016-2036
Gold Coast City Council
SA2
Pacific Pines-Gaven

Findings			
Primary		Secondary	
1st Decade to 2026	2nd Decade to 2036	1st Decade to 2026	2nd Decade to 2036
No new primary schools are likely to be required in the first decade	No new primary schools are likely to be required in the second decade	No new secondary schools are likely to be required in the first decade	No new secondary schools are likely to be required in the second decade



Queensland Schools Planning Reference Committee
 Cross-Sectoral New Schools Demand Mapping 2016-2036
Gold Coast City Council
SA2
Nerang-Mount Nathan

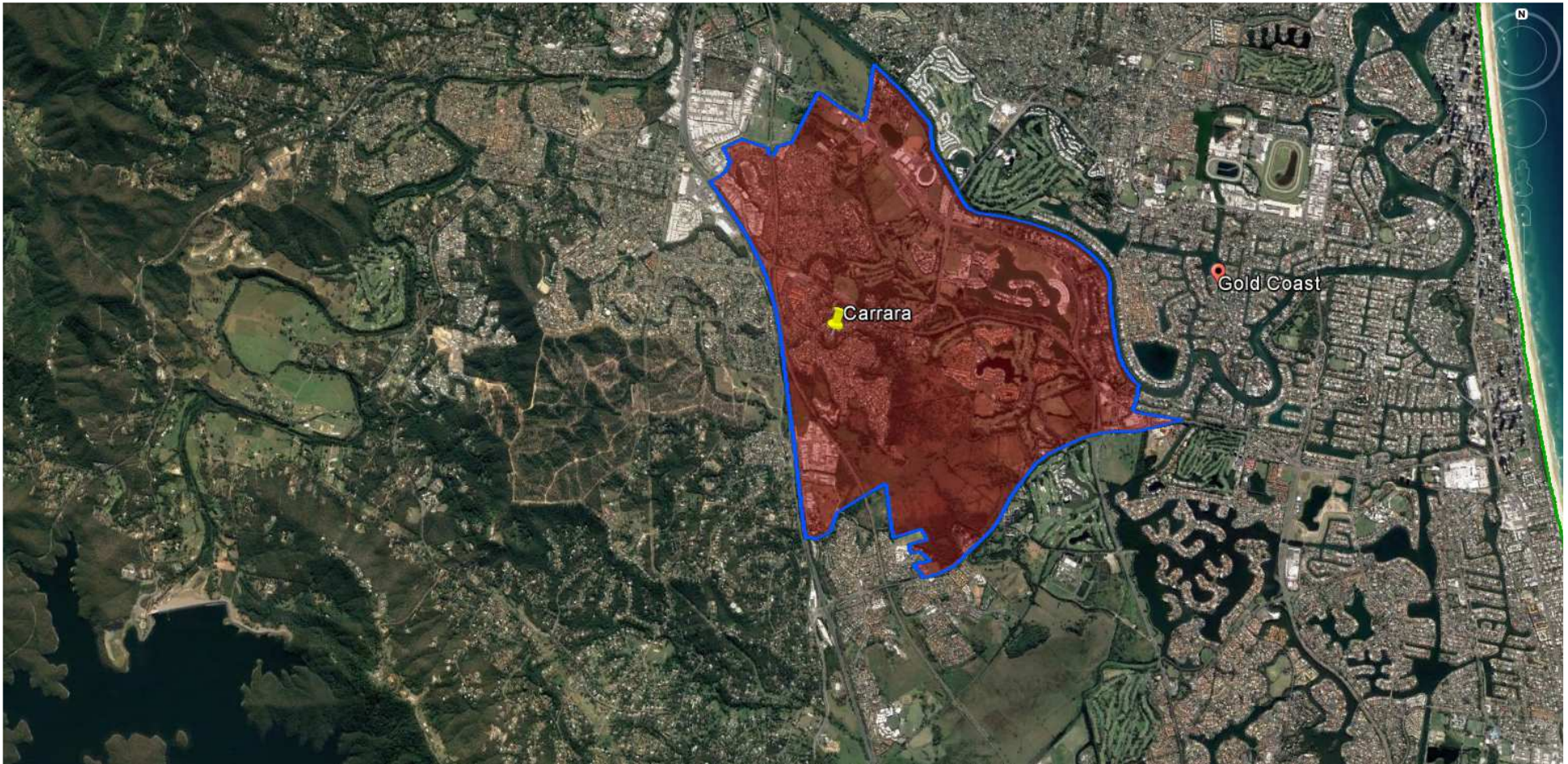
Findings			
Primary		Secondary	
1st Decade to 2026	2nd Decade to 2036	1st Decade to 2026	2nd Decade to 2036
No new primary schools are likely to be required in the first decade	No new primary schools are likely to be required in the second decade	No new secondary schools are likely to be required in the first decade	No new secondary schools are likely to be required in the second decade



Queensland Schools Planning Reference Committee
 Cross-Sectoral New Schools Demand Mapping 2016-2036
Gold Coast City Council
SA2
Worongary-Tallai

Findings

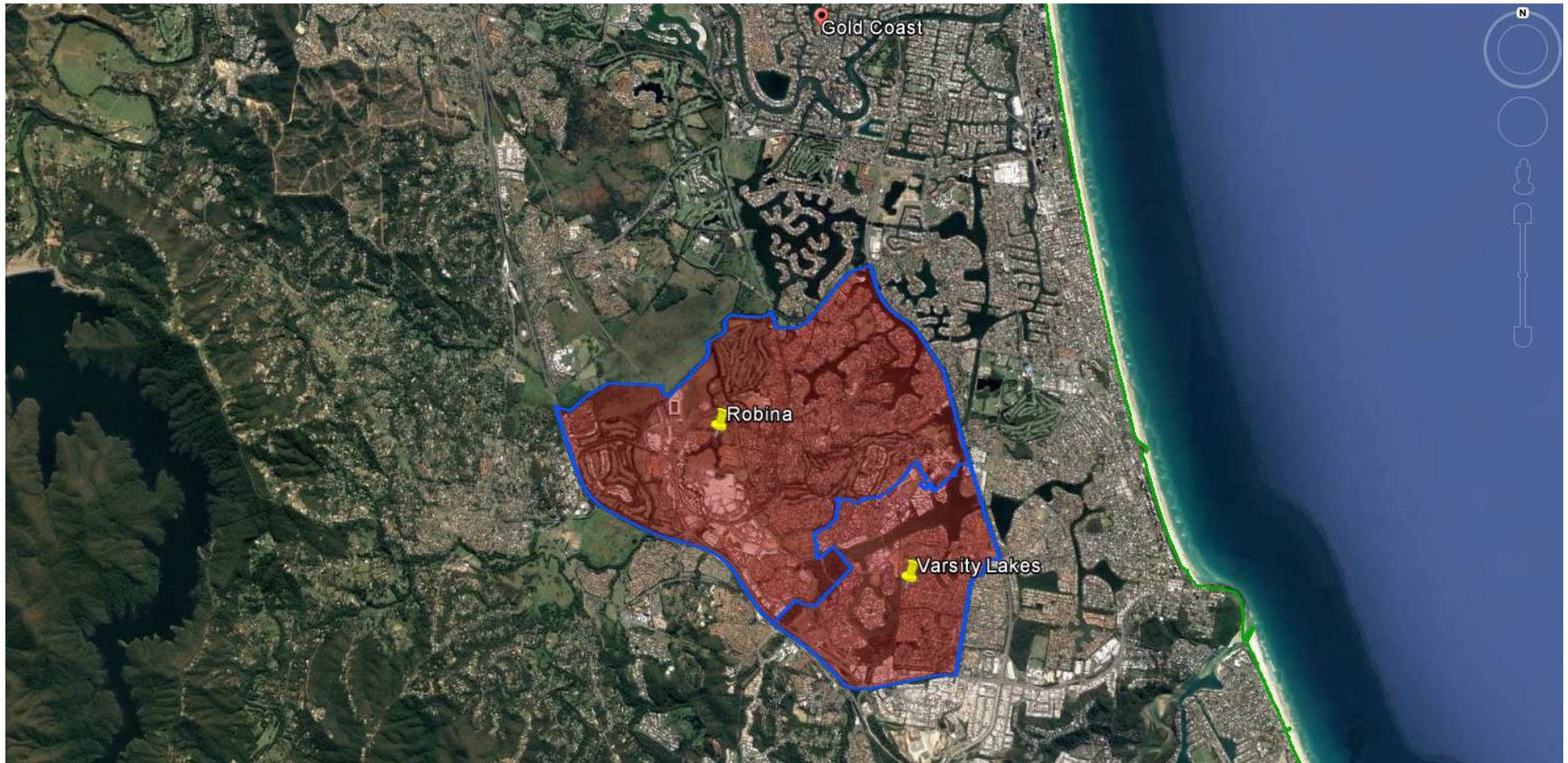
Primary		Secondary	
1st Decade to 2026	2nd Decade to 2036	1st Decade to 2026	2nd Decade to 2036
0-1 new primary school may be required in the first decade	0-1 new primary school may be required in the second decade	0-1 new secondary school may be required in the first decade	No new secondary schools are likely to be required in the second decade



Queensland Schools Planning Reference Committee
 Cross-Sectoral New Schools Demand Mapping 2016-2036
Gold Coast City Council
SA2
Carrara

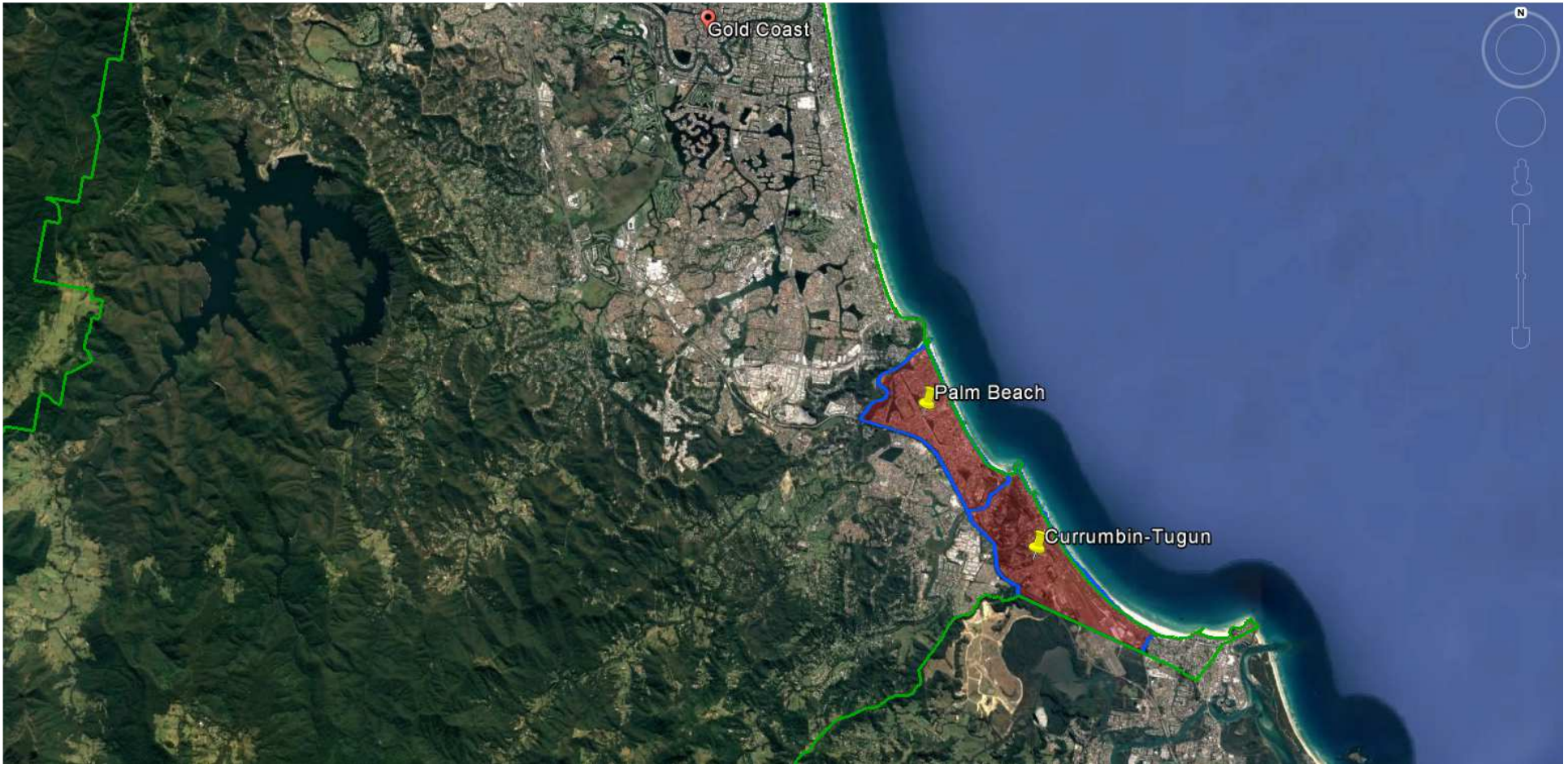
Findings

Primary		Secondary	
1st Decade to 2026	2nd Decade to 2036	1st Decade to 2026	2nd Decade to 2036
No new primary schools are likely to be required in the first decade	No new primary schools are likely to be required in the second decade	No new secondary schools are likely to be required in the first decade	No new secondary schools are likely to be required in the second decade



Queensland Schools Planning Reference Committee
 Cross-Sectoral New Schools Demand Mapping 2016-2036
Gold Coast City Council
SA2 Cluster
Robina; Varsity Lakes

Findings			
Primary		Secondary	
1st Decade to 2026	2nd Decade to 2036	1st Decade to 2026	2nd Decade to 2036
0-1 new primary school may be required in the first decade	No new primary schools are likely to be required in the second decade	No new secondary schools are likely to be required in the first decade	No new secondary schools are likely to be required in the second decade



Queensland Schools Planning Reference Committee
 Cross-Sectoral New Schools Demand Mapping 2016-2036
Gold Coast City Council
SA2 Cluster
Palm Beach; Currumbin-Tugun

Findings			
Primary		Secondary	
1st Decade to 2026	2nd Decade to 2036	1st Decade to 2026	2nd Decade to 2036
0-1 new primary school may be required in the first decade	0-1 new primary school may be required in the second decade	0-1 new secondary school may be required in the first decade	No new secondary schools are likely to be required in the second decade