

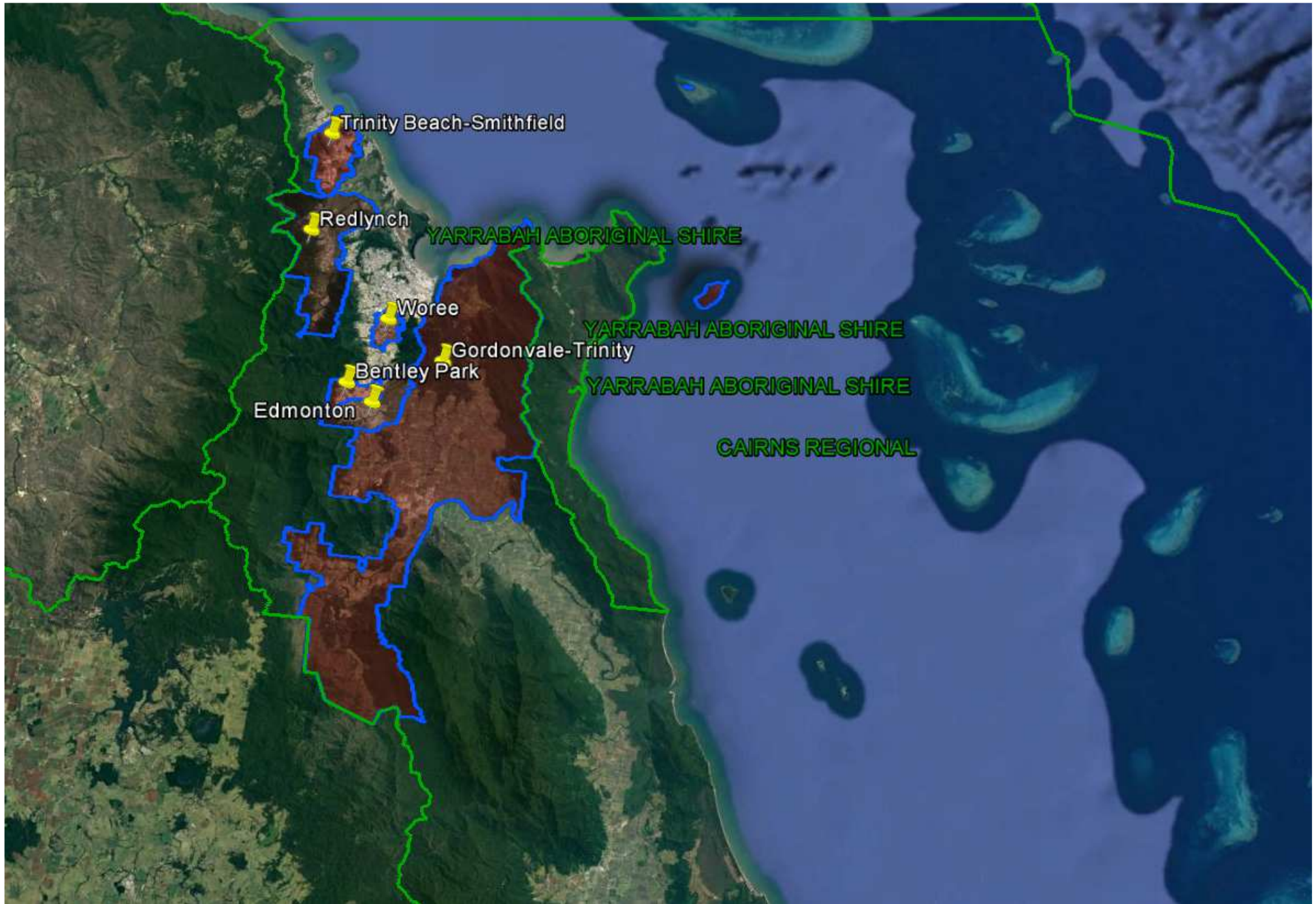
Queensland Schools Planning Reference Committee
Cross-Sectoral New Schools Demand Mapping
2016-2036

Cairns Regional Council

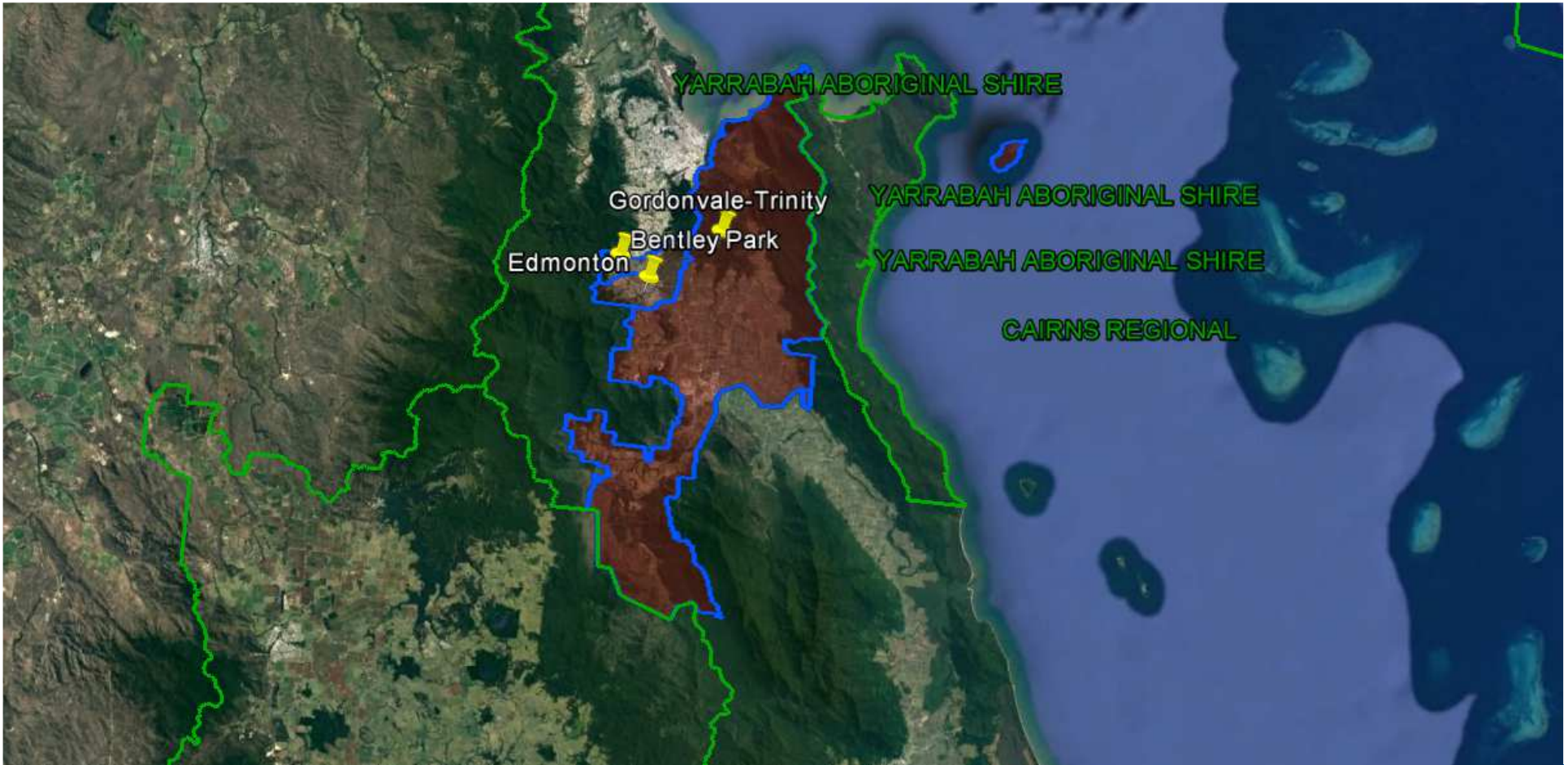
22 May 18

Investigated SA2

- Gordonvale-Trinity; Edmonton; Bentley Park
 - Trinity Beach – Smithfield
 - Woree
 - Redlynch

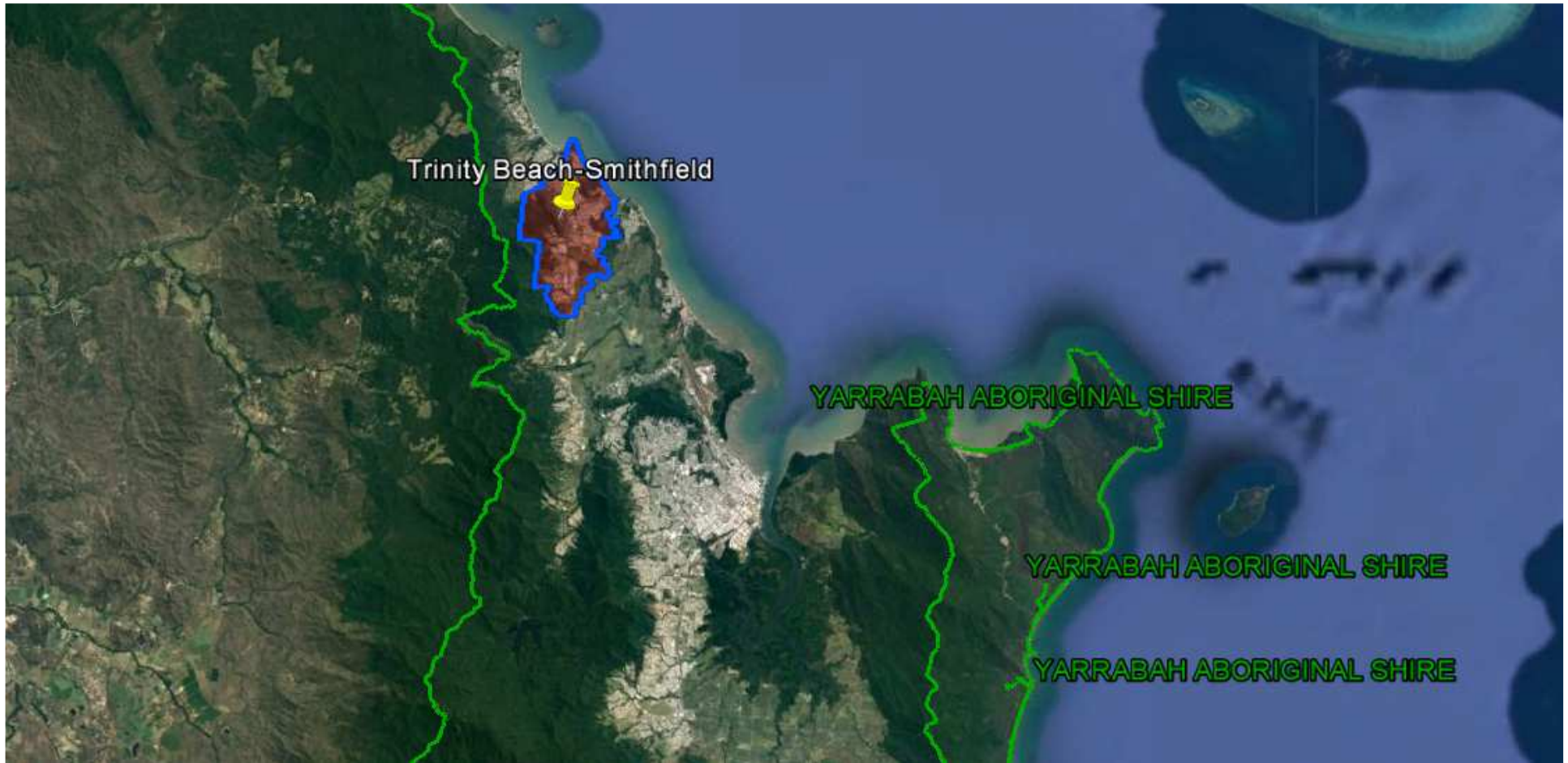


Queensland Schools Planning Reference Committee
SA2 studied in the Cairns Regional Council area



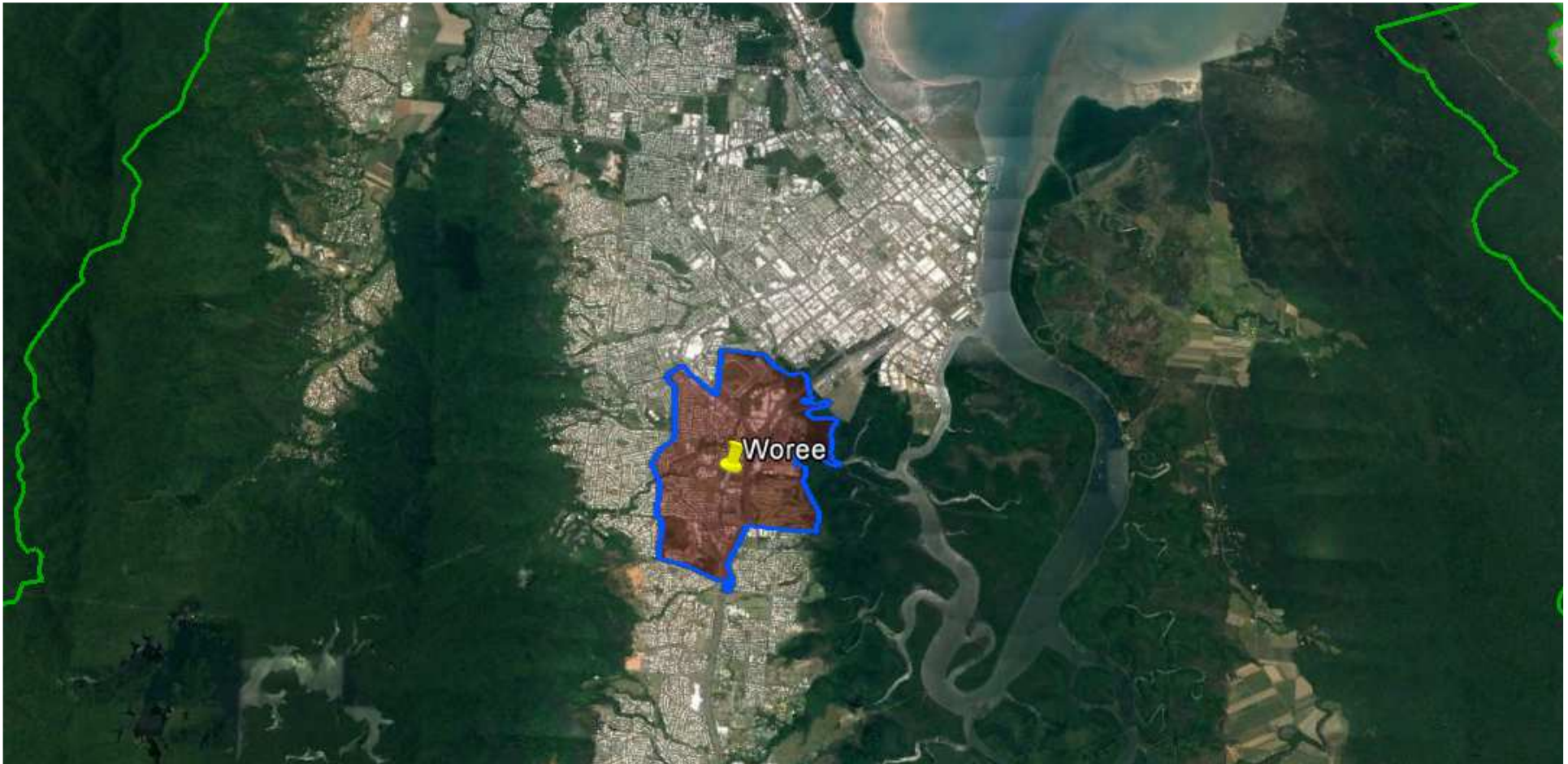
Queensland Schools Planning Reference Committee
 Cross-Sectoral New Schools Demand Mapping 2016-2036
Cairns Regional Council
SA2 Cluster
Gordonvale-Trinity; Edmonton; Bentley Park

Findings			
Primary		Secondary	
1st Decade to 2026	2nd Decade to 2036	1st Decade to 2026	2nd Decade to 2036
1 new primary school may be required in the first decade	2 new primary schools may be required in the second decade	1-2 new secondary schools may be required in the first decade	0 - 1 new secondary school may be required in the second decade



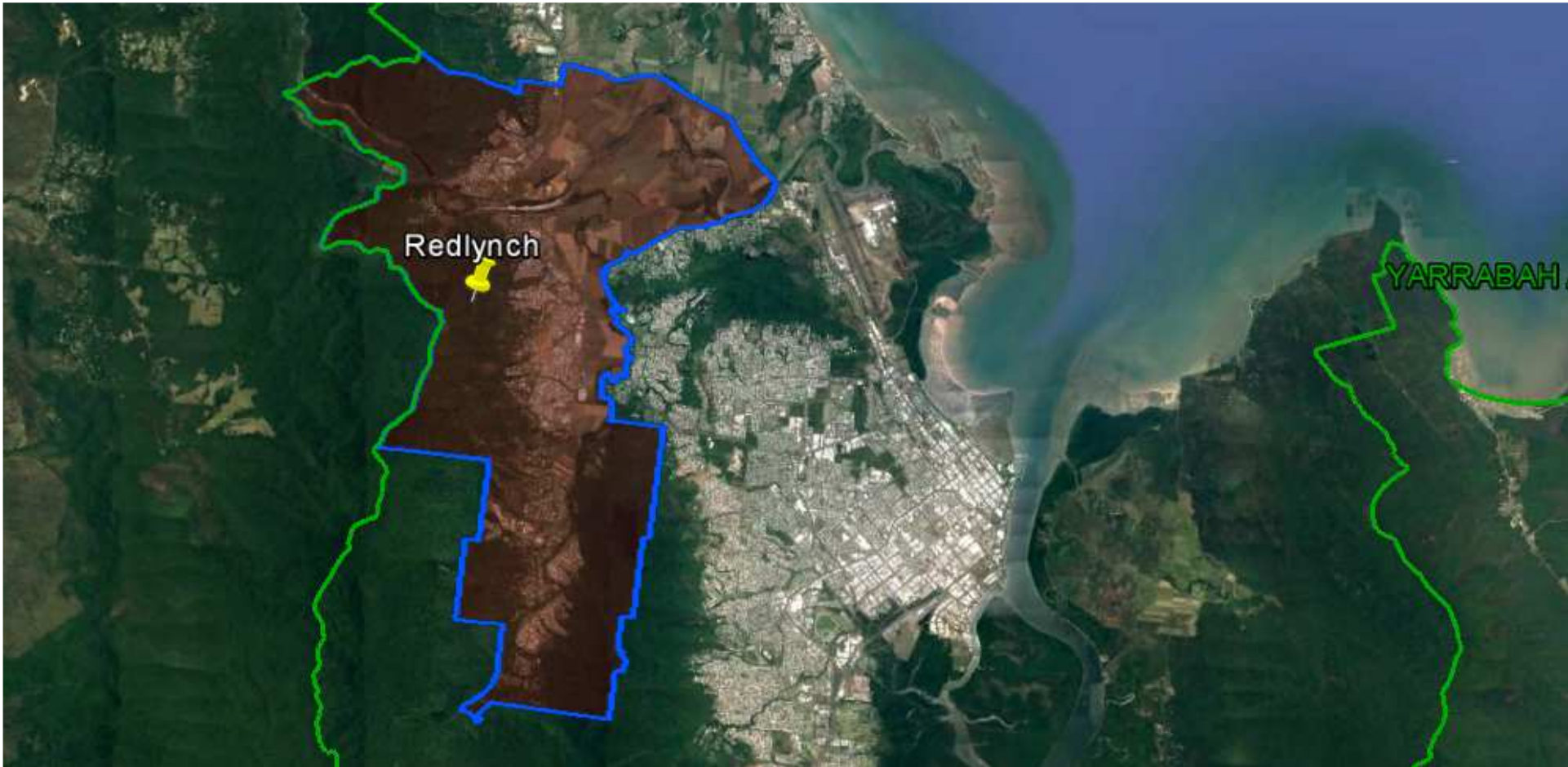
Queensland Schools Planning Reference Committee
 Cross-Sectoral New Schools Demand Mapping 2016-2036
Cairns Regional Council
SA2
Trinity Beach-Smithfield

Findings			
Primary		Secondary	
1st Decade to 2026	2nd Decade to 2036	1st Decade to 2026	2nd Decade to 2036
1 new primary school may be required in the first decade	1 new primary school may be required in the second decade	No new secondary schools are likely to be required in the first decade. Expansion of existing sites likely to capture growth	No new secondary schools are likely to be required in the second decade. Expansion of existing sites likely to capture growth



Queensland Schools Planning Reference Committee
 Cross-Sectoral New Schools Demand Mapping 2016-2036
Cairns Regional Council
SA2
Woree

Findings			
Primary		Secondary	
1st Decade to 2026	2nd Decade to 2036	1st Decade to 2026	2nd Decade to 2036
No new primary schools are likely to be required in the first decade. Expansion of existing sites likely to capture growth	No new primary schools are likely to be required in the second decade. Expansion of existing sites likely to capture growth	No new secondary schools are likely to be required in the first decade. Expansion of existing sites likely to capture growth	No new secondary schools are likely to be required in the second decade. Expansion of existing sites likely to capture growth



Queensland Schools Planning Reference Committee
 Cross-Sectoral New Schools Demand Mapping 2016-2036
Cairns Regional Council
SA2
Redlynch

Findings			
Primary		Secondary	
1st Decade to 2026	2nd Decade to 2036	1st Decade to 2026	2nd Decade to 2036
No new primary schools are likely to be required in the first decade. Expansion of existing sites likely to capture growth	No new primary schools are likely to be required in the second decade. Expansion of existing sites likely to capture growth	No new secondary schools are likely to be required in the first decade. Expansion of existing sites likely to capture growth	No new secondary schools are likely to be required in the second decade. Expansion of existing sites likely to capture growth