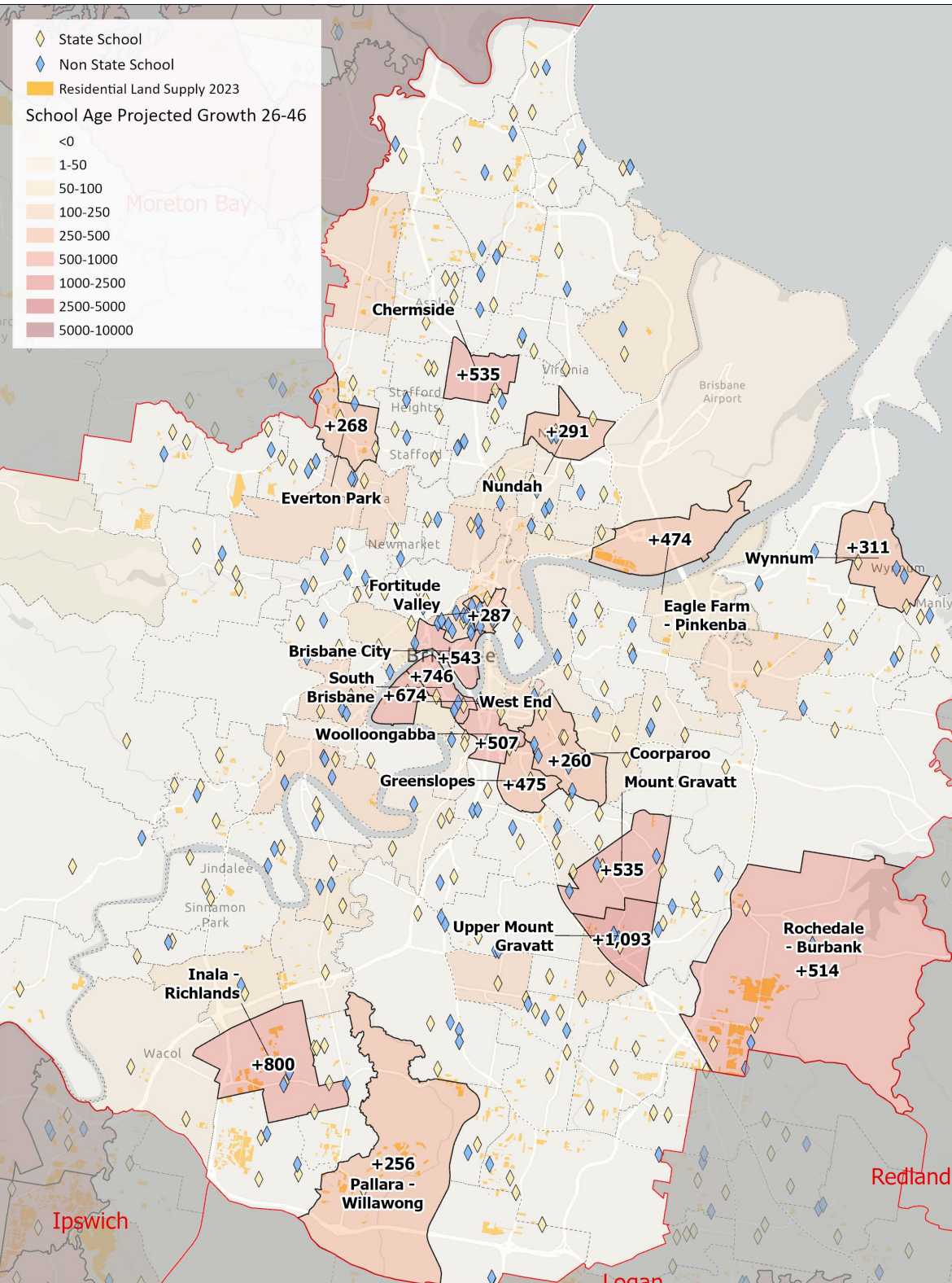


Queensland Schools Planning Reference Committee Cross-Sectoral New Schools Demand Mapping 2026 to 2046

**Brisbane City Council
Friday 31 May 2024**

New government and non-government schools that may be required

SA2 or Cluster	2026 to 2036		2036 to 2046		SA2 or Cluster	2026 to 2036		2036 to 2046	
	Primary	Secondary	Primary	Secondary		Primary	Secondary	Primary	Secondary
South Brisbane, West End and Highgate Hill	1	0	1	0	Darra – Sumner, Inala – Richlands, Oxley (Qld) and Durack	0	1	0	1
Brisbane City + Spring Hill	0	0	0	0	Rochedale – Burbank	0	0	0	0
Fortitude Valley, Newstead – Bowen Hills and New Farm	0	0	1	0	Greenslopes and Coorparoo	0	0	1	0
East Brisbane, Kangaroo Point and Woolloongabba	0	0	1	0	Indooroopilly, Taringa, Toowong and St Lucia	1	0	0	0
Upper Mount Gravatt and Mount Gravatt SA2s	1	0	1	1	Pallara – Willawong	0	0	0	0
Eagle Farm – Pinkenba and Hamilton	1	0	0	0	Sunnybank Hills	0	0	0	0



Queensland Government Statistics Offices (QGSO) supplied student age projections, 2023 Edition. <https://www.qgso.qld.gov.au/statistics/theme/society/education/projected-school-aged-persons>

New school recommendations reflect the potential need of new state and non-state primary and secondary schools based on an assessment of the 2023 edition Queensland Government population projections, local advice on population growth and available capacity within the existing school network. The growth SA2s, shown above, were selected for detailed assessment during the Demand Mapping Meeting. Areas for assessment are comprised of one or more Statistical Areas Level 2 (SA2s) which are established by the Australian Bureau of Statistics and are the smallest statistical area commonly used for a range of statistical information including population projections. Population projections used to inform this assessment are prepared by the Queensland Government Statistician's Office and can be accessed [here](#).