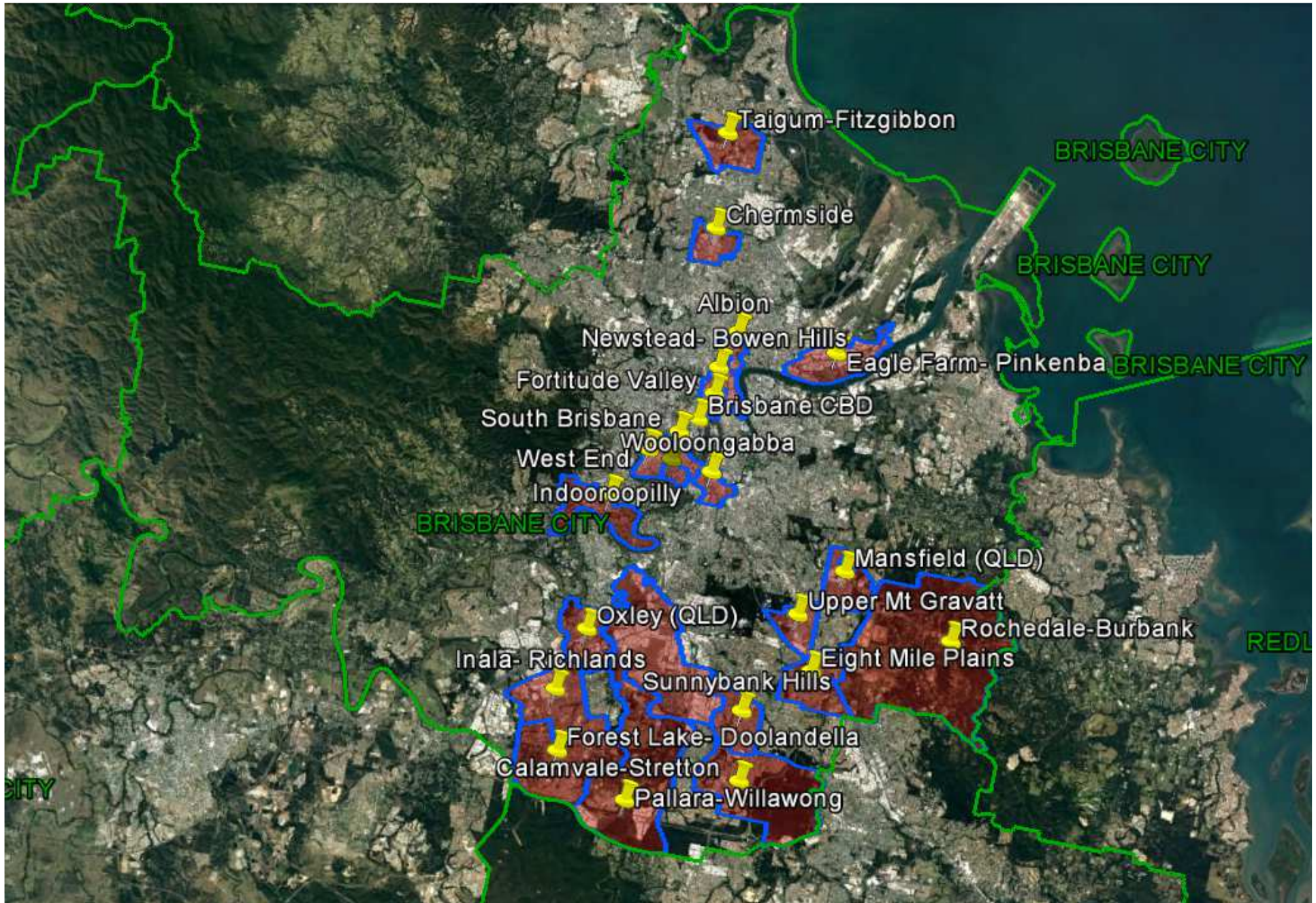


Queensland Schools Planning Reference Committee
Cross-Sectoral New Schools Demand Mapping
2016-2036

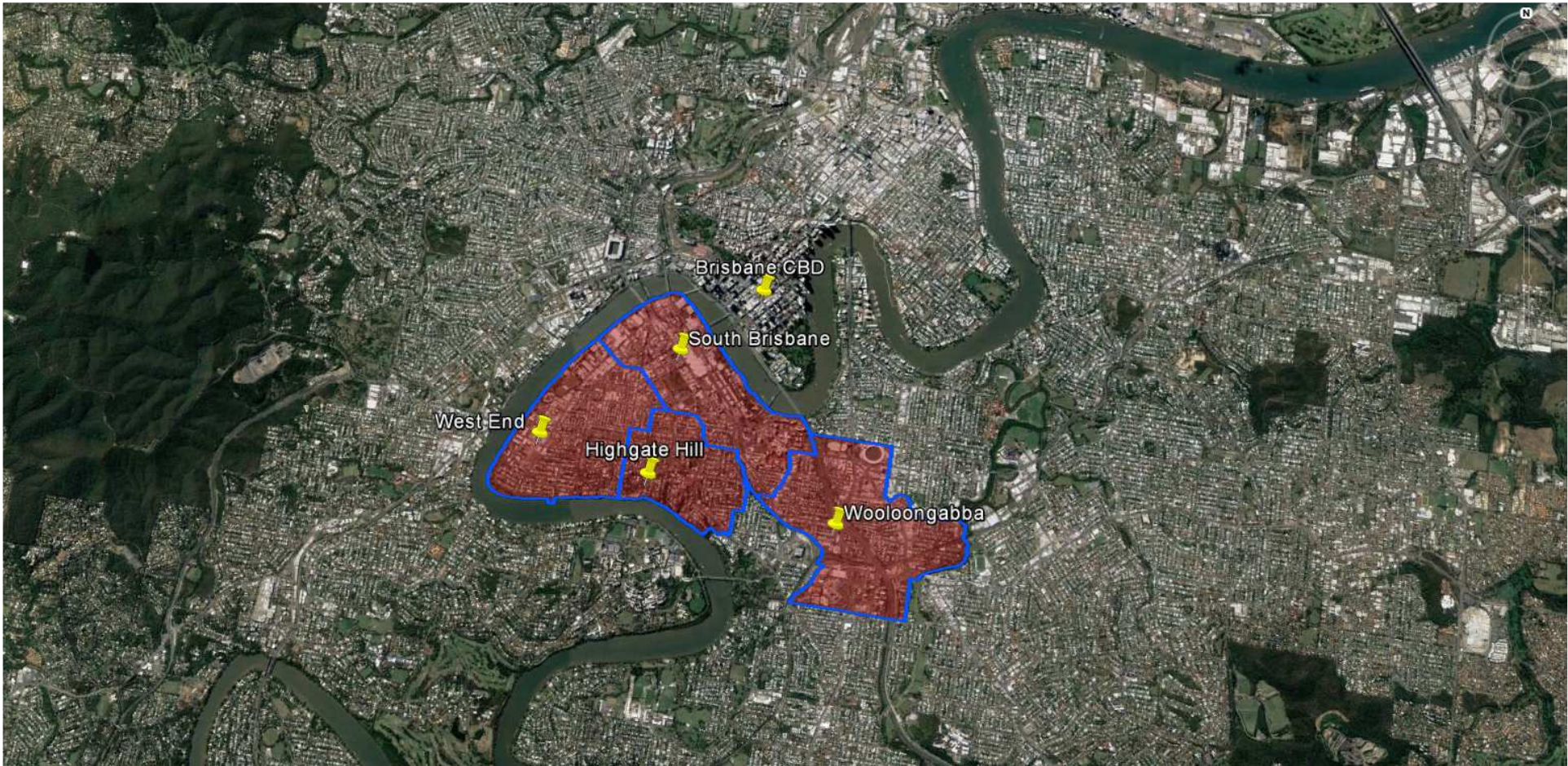
Brisbane City Council

Investigated SA2

- Woolloongabba; Highgate Hill; South Brisbane; West End
 - Fortitude Valley; Albion; Newstead - Bowen Hills
 - Chermside
 - Forest Lake - Doolandella
 - Inala - Richlands
- Eight Mile Plains; Mansfield (QLD); Rochedale – Burbank; Upper Mount Gravatt
 - Eagle Farm - Pinkenba
 - Calamvale - Stretton
 - Pallara - Willawong
 - Taigum - Fitzgibbon
 - Indooroopilly
 - Sunnybank Hills
 - Oxley (Qld)

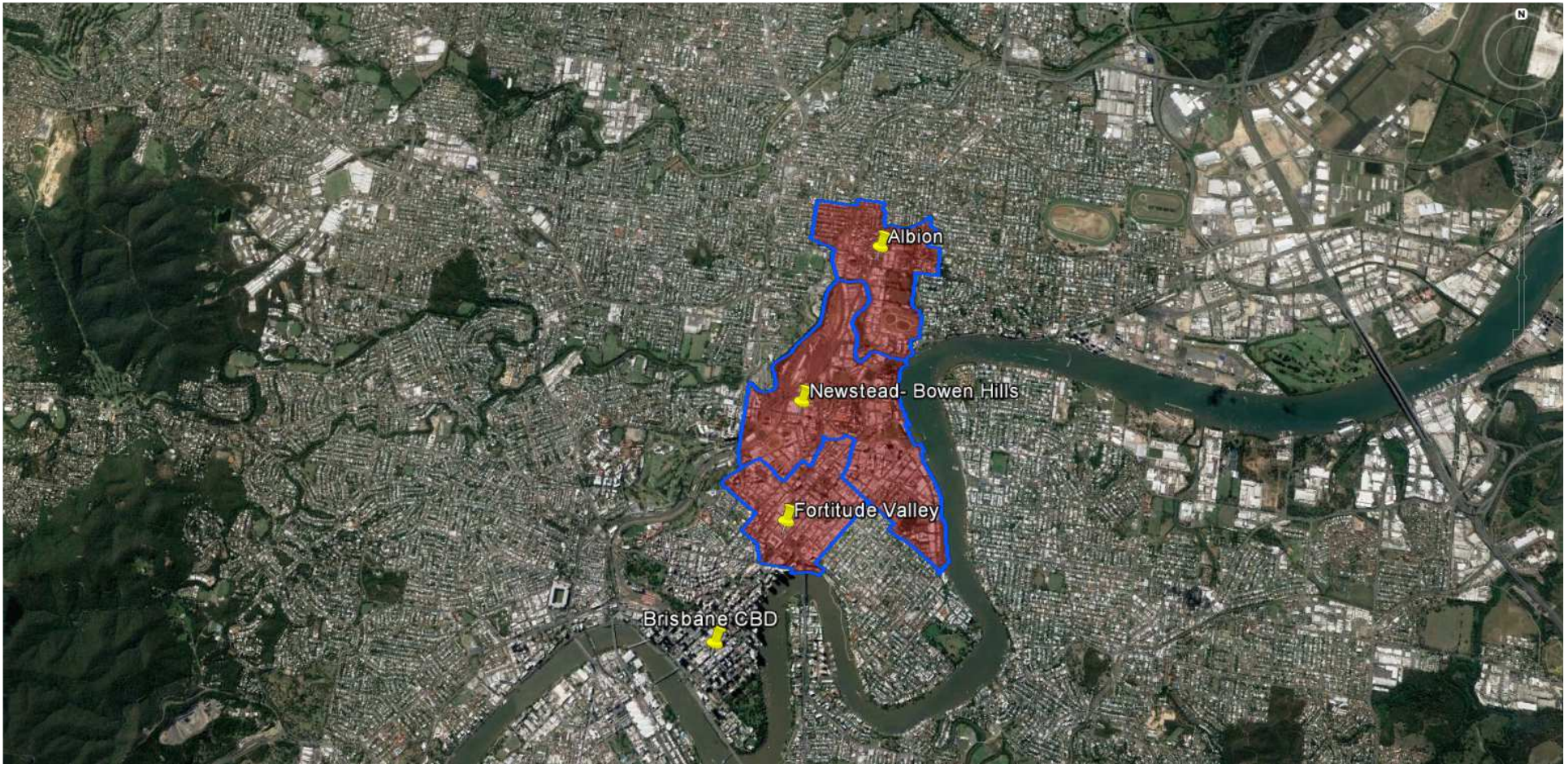


Queensland Schools Planning Reference Committee
SA2 studied in the Brisbane City Council area



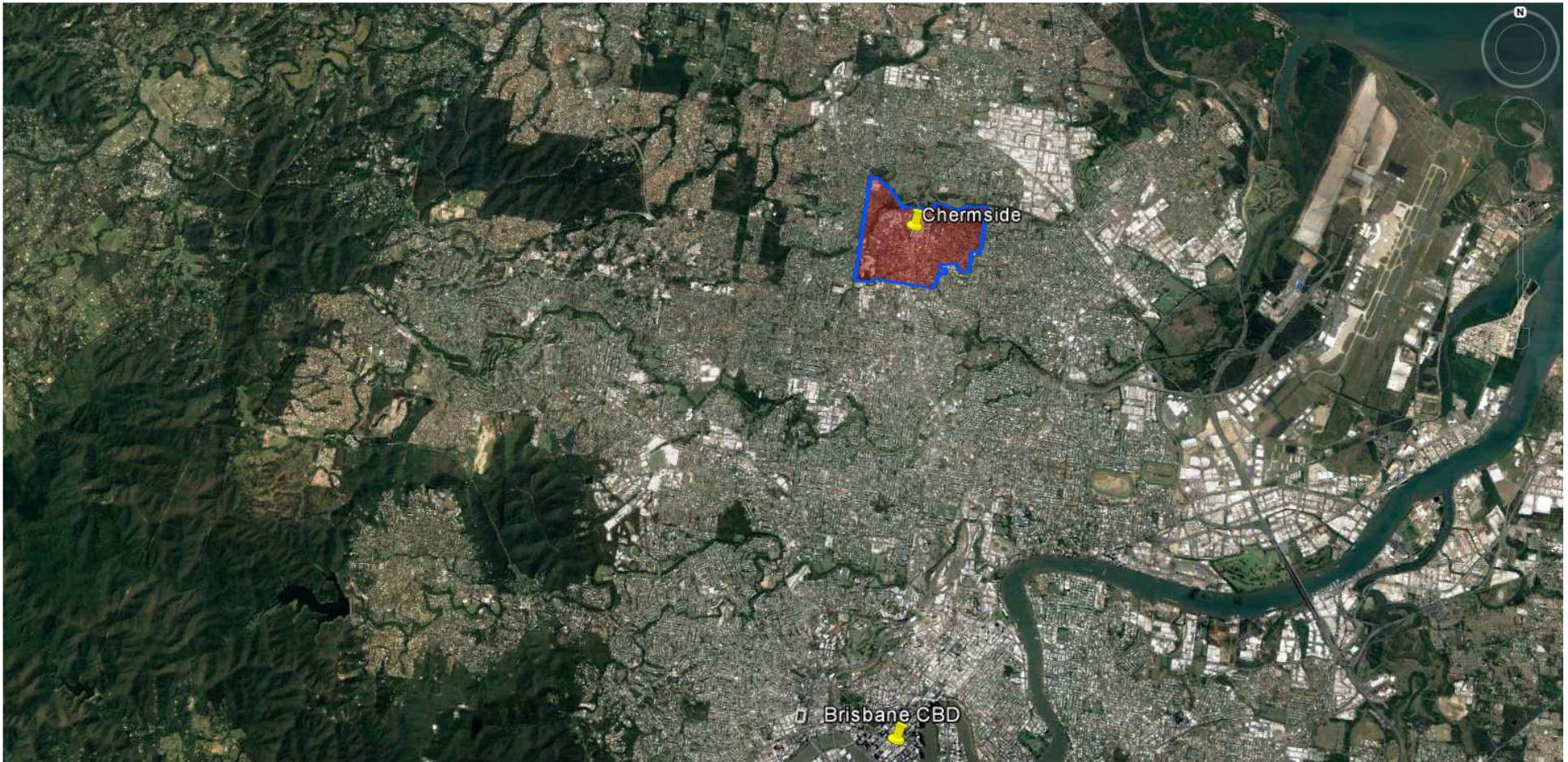
Queensland Schools Planning Reference Committee
 Cross-Sectoral New Schools Demand Mapping 2016-2036
Brisbane City Council
SA2 Cluster
West End; South Brisbane; Highgate Hill; Woolloongabba

| Findings | | | |
|---|--|---|---|
| Primary | | Secondary | |
| 1st Decade to 2026 | 2nd Decade to 2036 | 1st Decade to 2026 | 2nd Decade to 2036 |
| 2 new primary schools may be required in the first decade | 1-2 new primary schools may be required in the second decade | 2 new secondary schools may be required in the first decade | 0 - 1 new secondary school may be required in the second decade |



Queensland Schools Planning Reference Committee
 Cross-Sectoral New Schools Demand Mapping 2016-2036
Brisbane City Council
SA2 Cluster
Fortitude Valley; Newstead-Bowen Hills; Albion

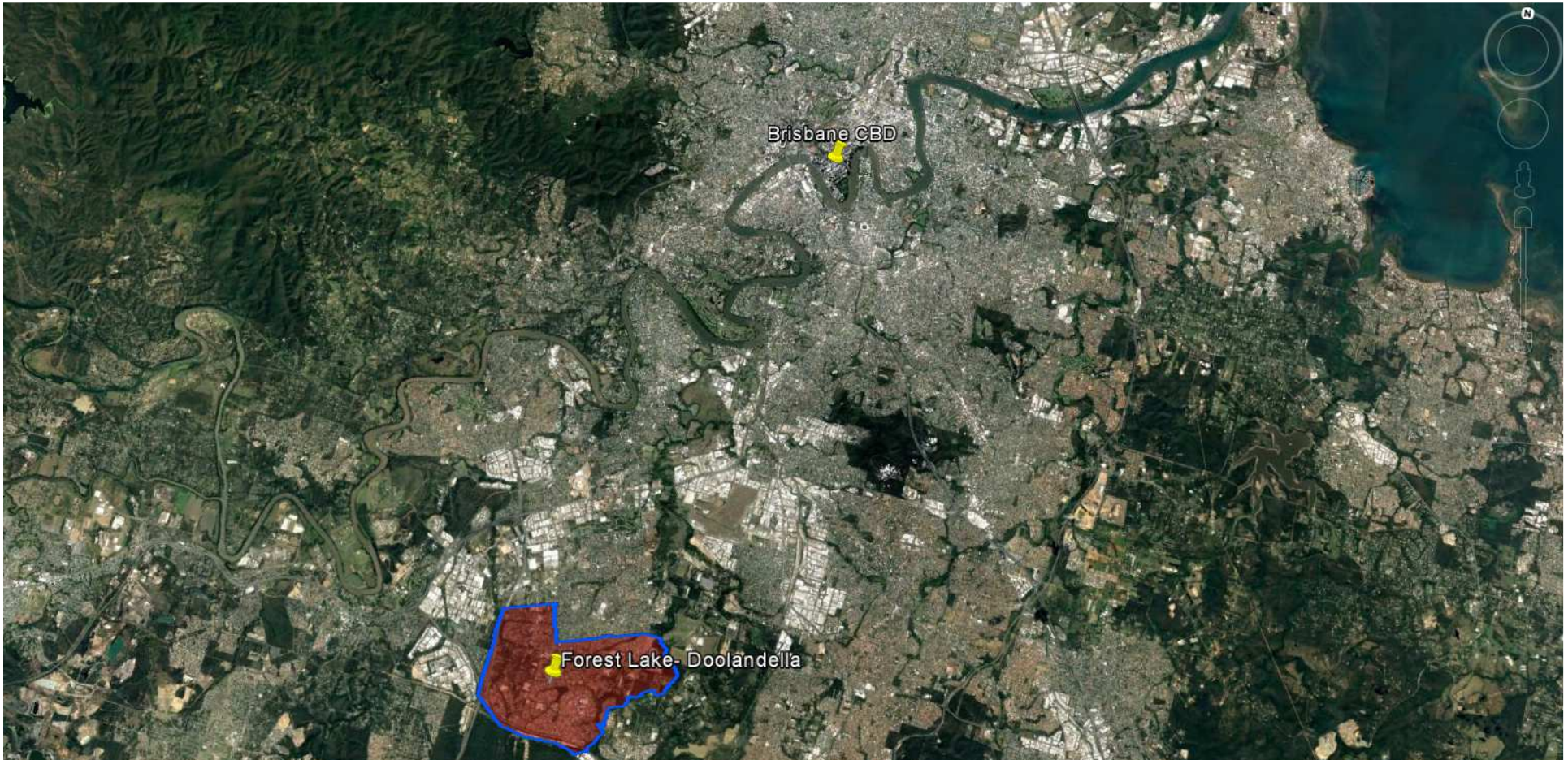
| Findings | | | |
|---|--|---|---|
| Primary | | Secondary | |
| 1st Decade to 2026 | 2nd Decade to 2036 | 1st Decade to 2026 | 2nd Decade to 2036 |
| 1-2 new primary schools may be required in the first decade | 1-2 new primary schools may be required in the second decade | 1-2 new secondary schools may be required in the first decade | 0 - 1 new secondary school may be required in the second decade |



Queensland Schools Planning Reference Committee
 Cross-Sectoral New Schools Demand Mapping 2016-2036
Brisbane City Council
SA2
Chermiside

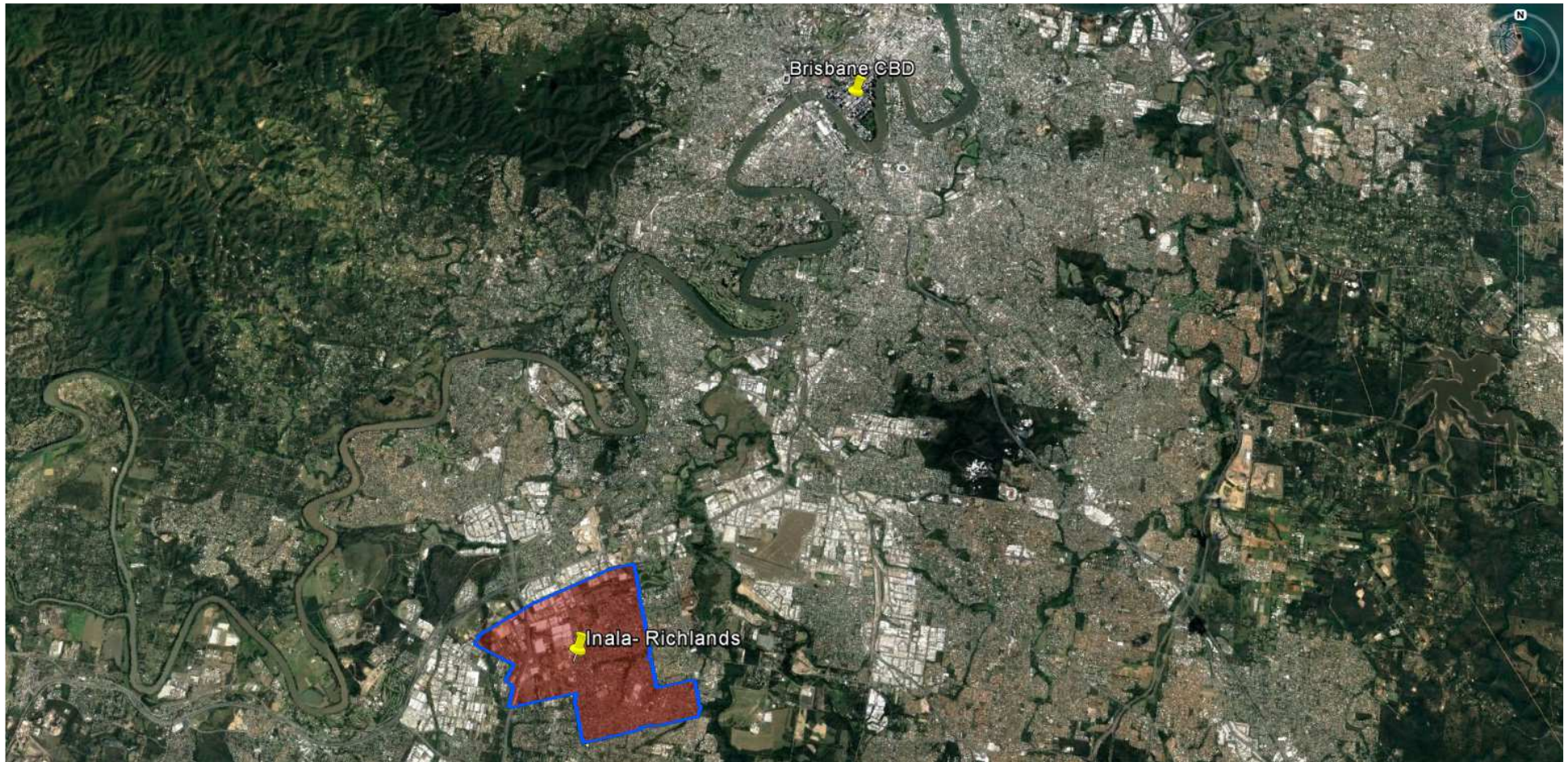
Findings

| Primary | | Secondary | |
|--|---|--|---|
| 1st Decade to 2026 | 2nd Decade to 2036 | 1st Decade to 2026 | 2nd Decade to 2036 |
| No new primary schools may be required in the first decade. Expansion of existing sites likely to capture growth | No new primary schools may be required in the second decade. Expansion of existing sites likely to capture growth | No new secondary schools are likely to be required in the first decade. Expansion of existing sites likely to capture growth | No new secondary schools are likely to be required in the second decade. Expansion of existing sites likely to capture growth |



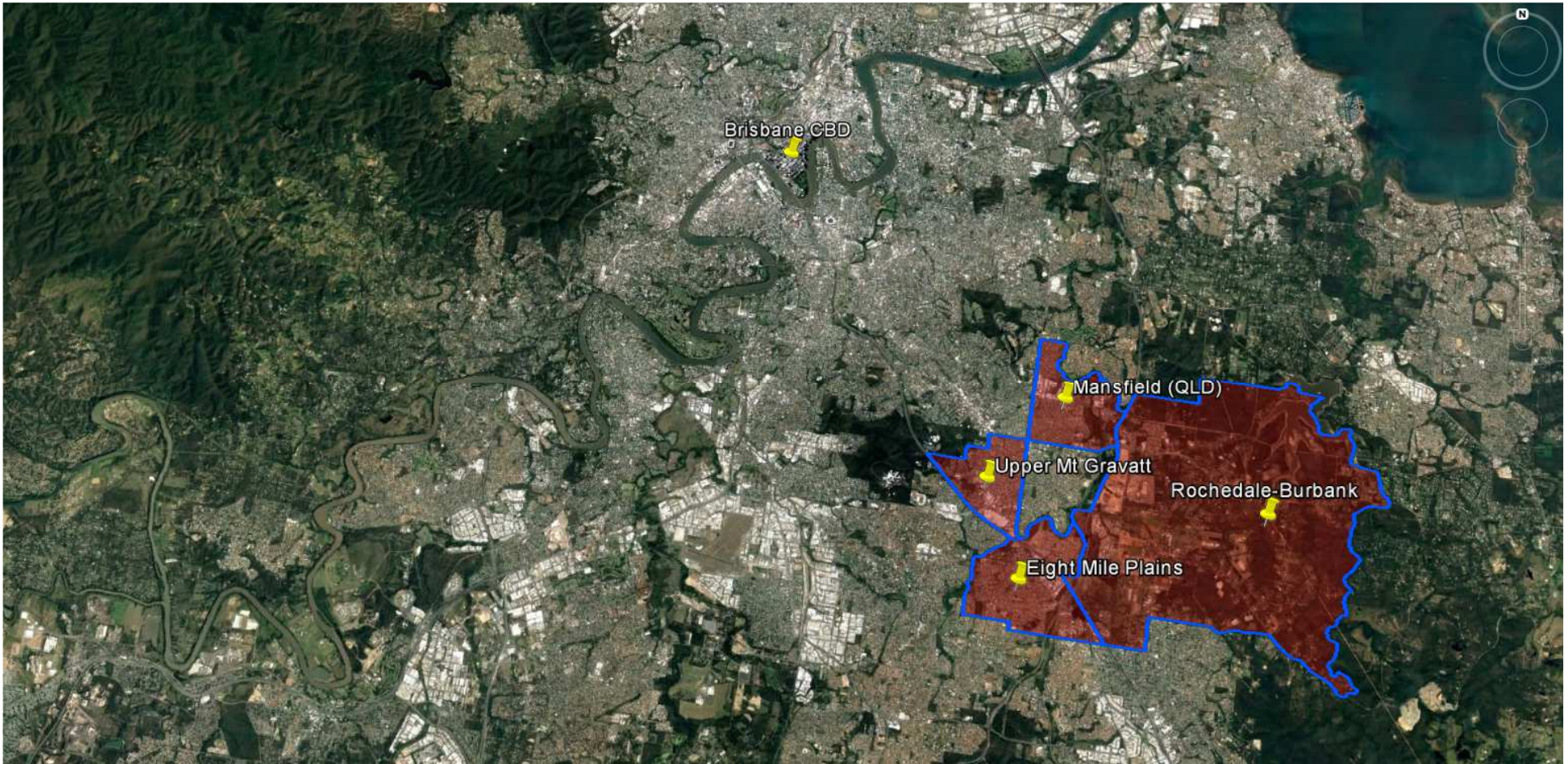
Queensland Schools Planning Reference Committee
 Cross-Sectoral New Schools Demand Mapping 2016-2036
Brisbane City Council
SA2
Forest Lake-Doolandella

| Findings | | | |
|--|---|--|---|
| Primary | | Secondary | |
| 1st Decade to 2026 | 2nd Decade to 2036 | 1st Decade to 2026 | 2nd Decade to 2036 |
| No new primary schools are likely to be required in the first decade. Expansion of existing sites likely to capture growth | No new primary schools are likely to be required in the second decade. Expansion of existing sites likely to capture growth | No new secondary schools are likely to be required in the first decade. Expansion of existing sites likely to capture growth | No new secondary schools are likely to be required in the second decade. Expansion of existing sites likely to capture growth |



Queensland Schools Planning Reference Committee
 Cross-Sectoral New Schools Demand Mapping 2016-2036
Brisbane City Council
SA2
Inala-Richlands

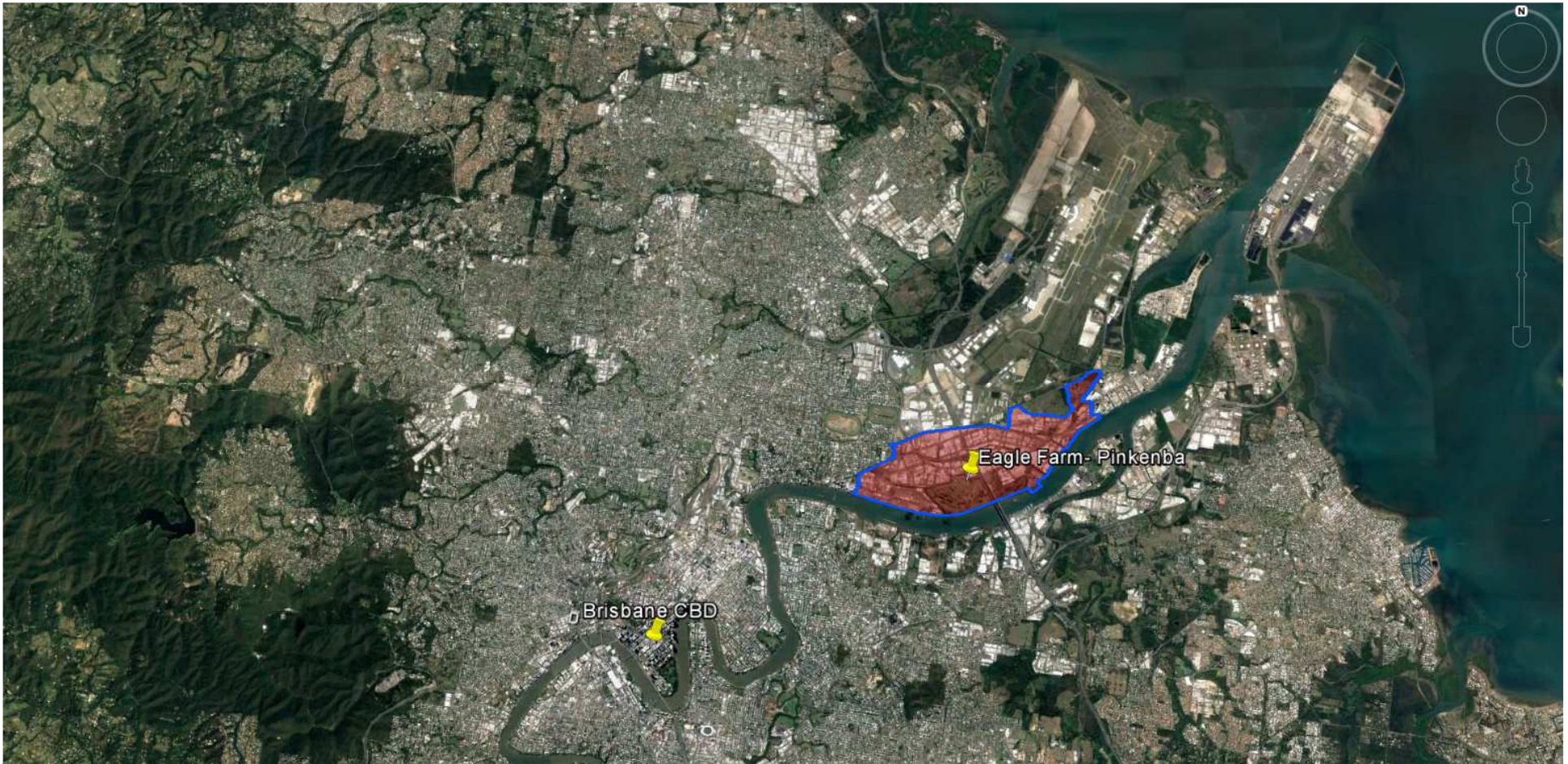
| Findings | | | |
|---|--|--|---|
| Primary | | Secondary | |
| 1st Decade to 2026 | 2nd Decade to 2036 | 1st Decade to 2026 | 2nd Decade to 2036 |
| 1-2 new primary schools may be required in the first decade | 1-2 new primary schools may be required in the second decade | 1 new secondary school may be required in the first decade | 0 - 1 new secondary school may be required in the second decade |



Queensland Schools Planning Reference Committee
 Cross-Sectoral New Schools Demand Mapping 2016-2036
Brisbane City Council
SA2 Cluster

Eight Mile Plains; Upper Mt Gravatt; Mansfield; Rochedale-Burbank

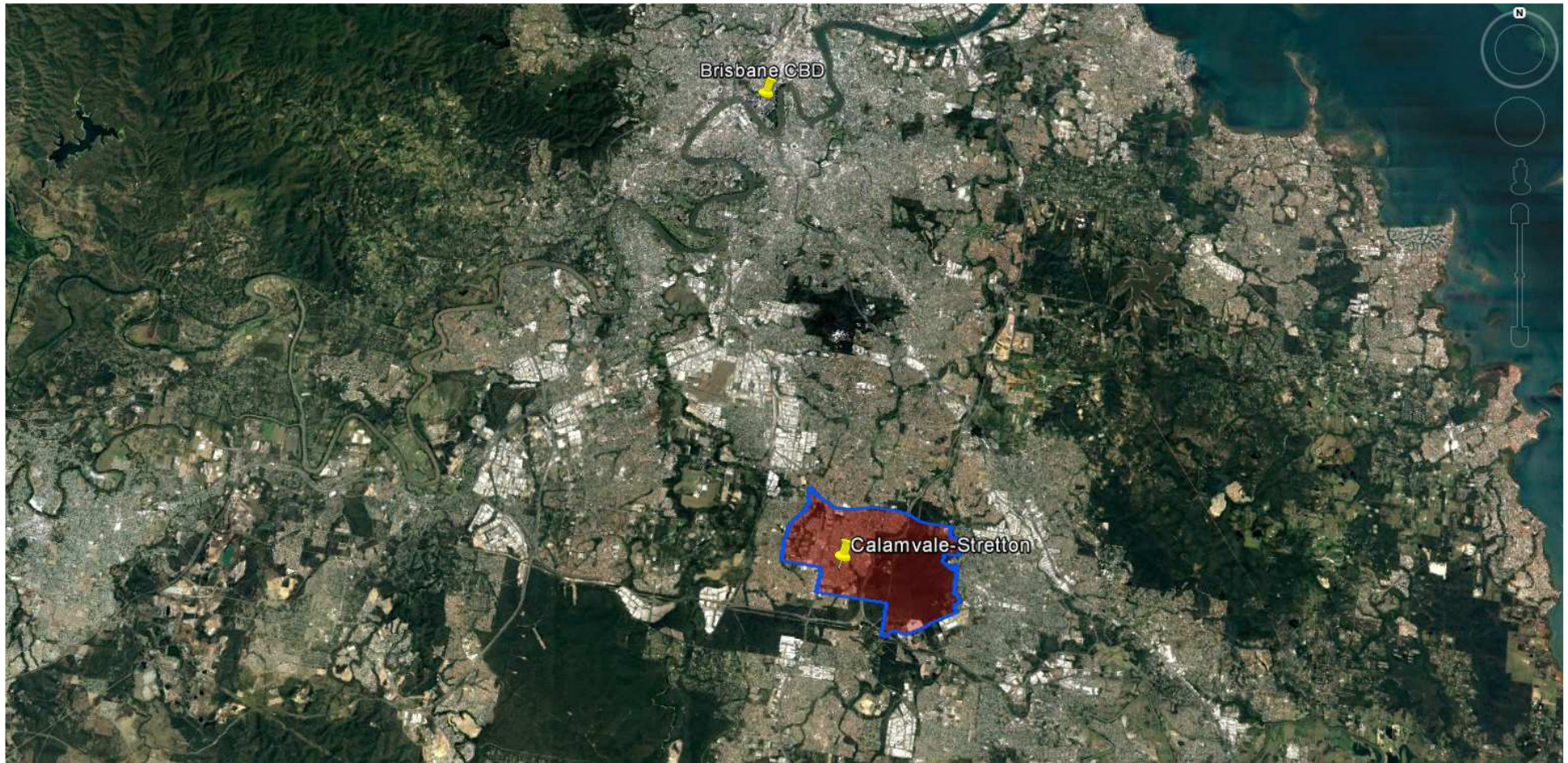
| Findings | | | |
|--|--|--|---|
| Primary | | Secondary | |
| 1st Decade to 2026 | 2nd Decade to 2036 | 1st Decade to 2026 | 2nd Decade to 2036 |
| 0-1 primary school may be required in the first decade | 1-2 new primary schools may be required in the second decade | 0-1 new secondary school may be required in the first decade | 0 - 1 new secondary school may be required in the second decade |



Queensland Schools Planning Reference Committee
 Cross-Sectoral New Schools Demand Mapping 2016-2036
Brisbane City Council
SA2
Eagle Farm-Pinkenba

Findings

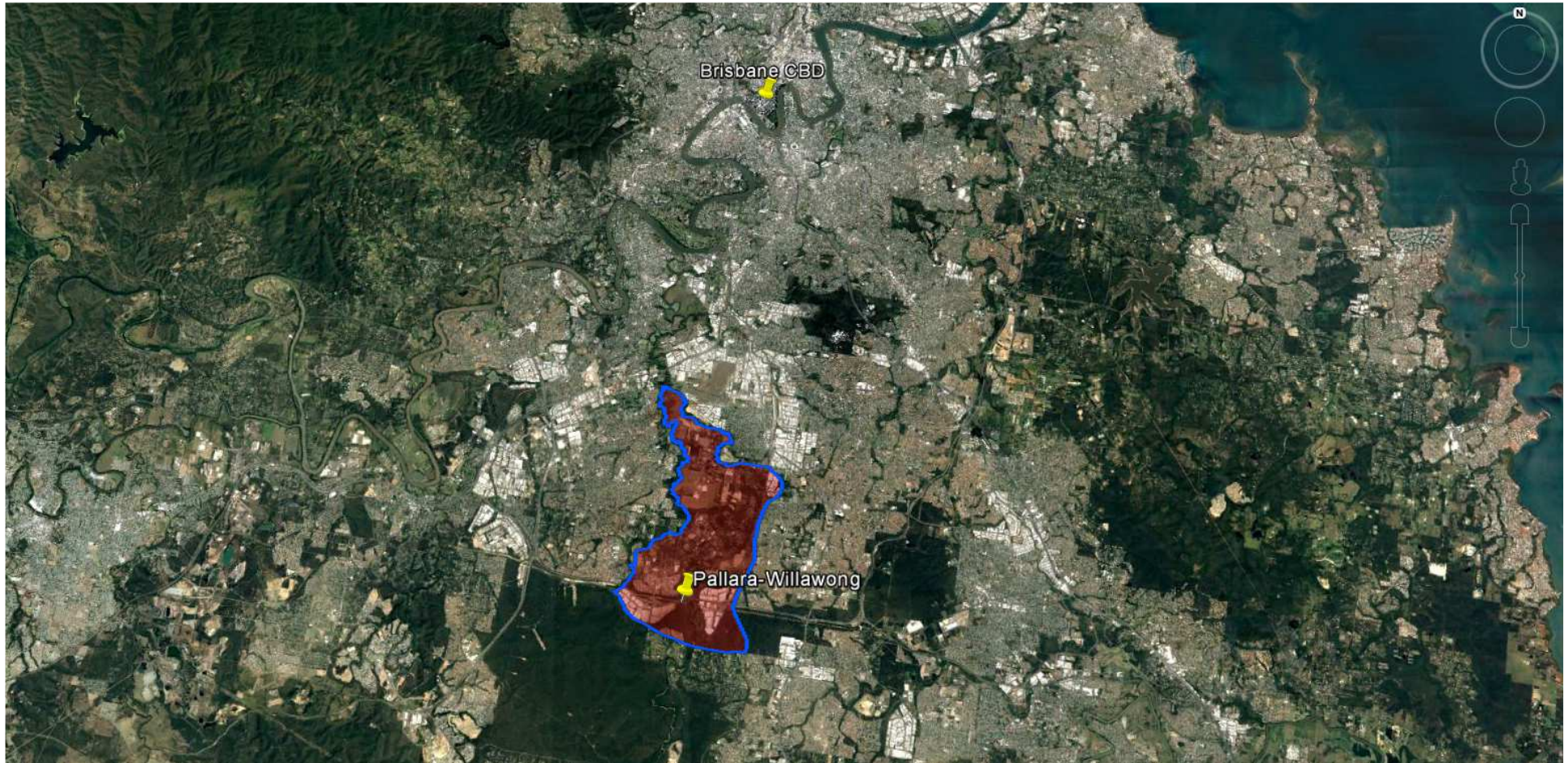
| Primary | | Secondary | |
|--|---|---|---|
| 1st Decade to 2026 | 2nd Decade to 2036 | 1st Decade to 2026 | 2nd Decade to 2036 |
| 0-1 primary school may be required in the first decade | 0-1 primary school may be required in the second decade | No new secondary schools are likely to be required in the second decade | No new secondary schools are likely to be required in the second decade |



Queensland Schools Planning Reference Committee
 Cross-Sectoral New Schools Demand Mapping 2016-2036
Brisbane City Council
SA2
Calamvale-Stretton

Findings

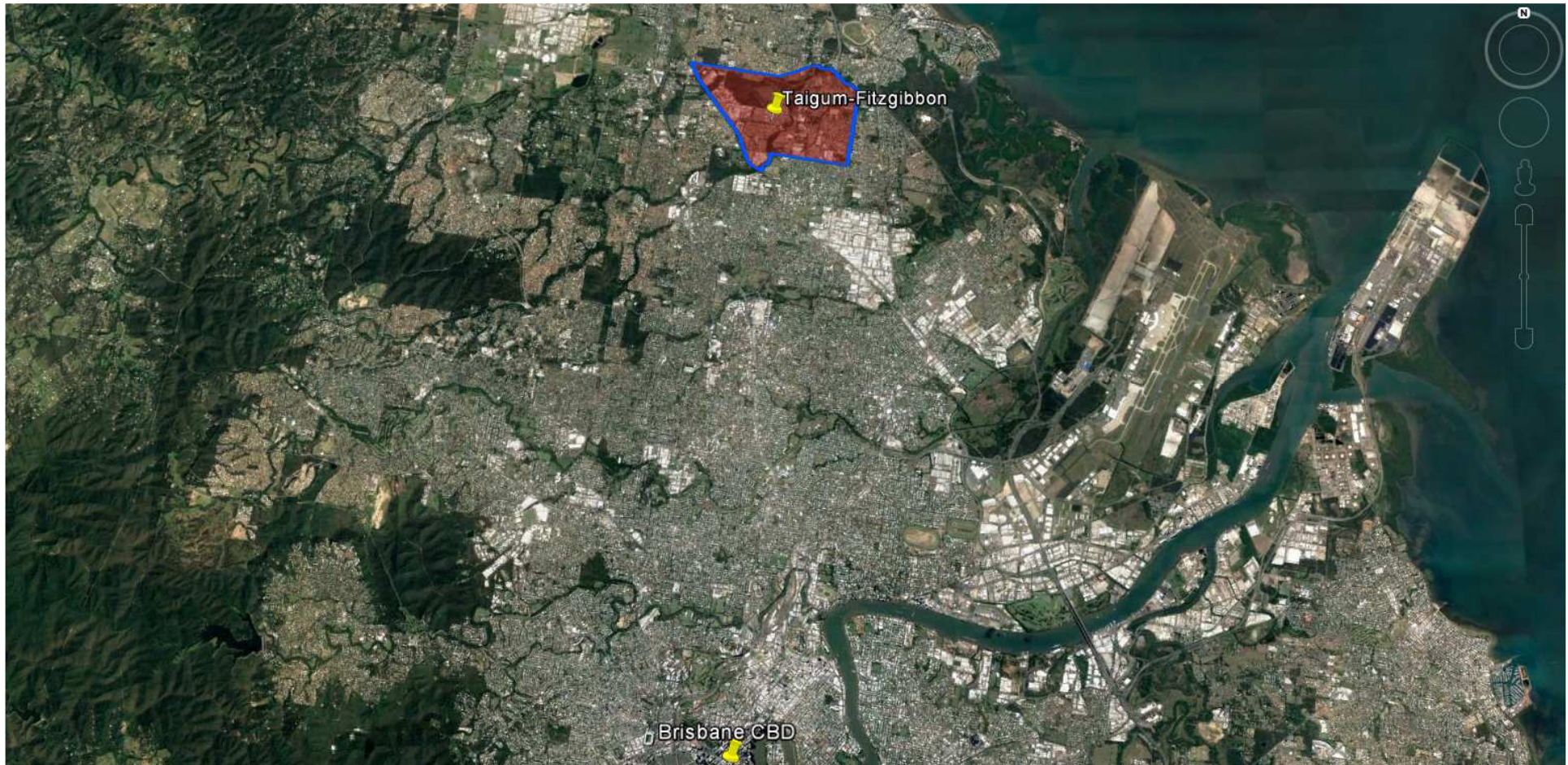
| Primary | | Secondary | |
|--|---|---|---|
| 1st Decade to 2026 | 2nd Decade to 2036 | 1st Decade to 2026 | 2nd Decade to 2036 |
| 0-1 primary school may be required in the first decade | No new primary schools may be required in the second decade | No new secondary schools are likely to be required in the second decade | No new secondary schools are likely to be required in the second decade |



Queensland Schools Planning Reference Committee
 Cross-Sectoral New Schools Demand Mapping 2016-2036
Brisbane City Council
SA2
Palarra-Willawong

Findings

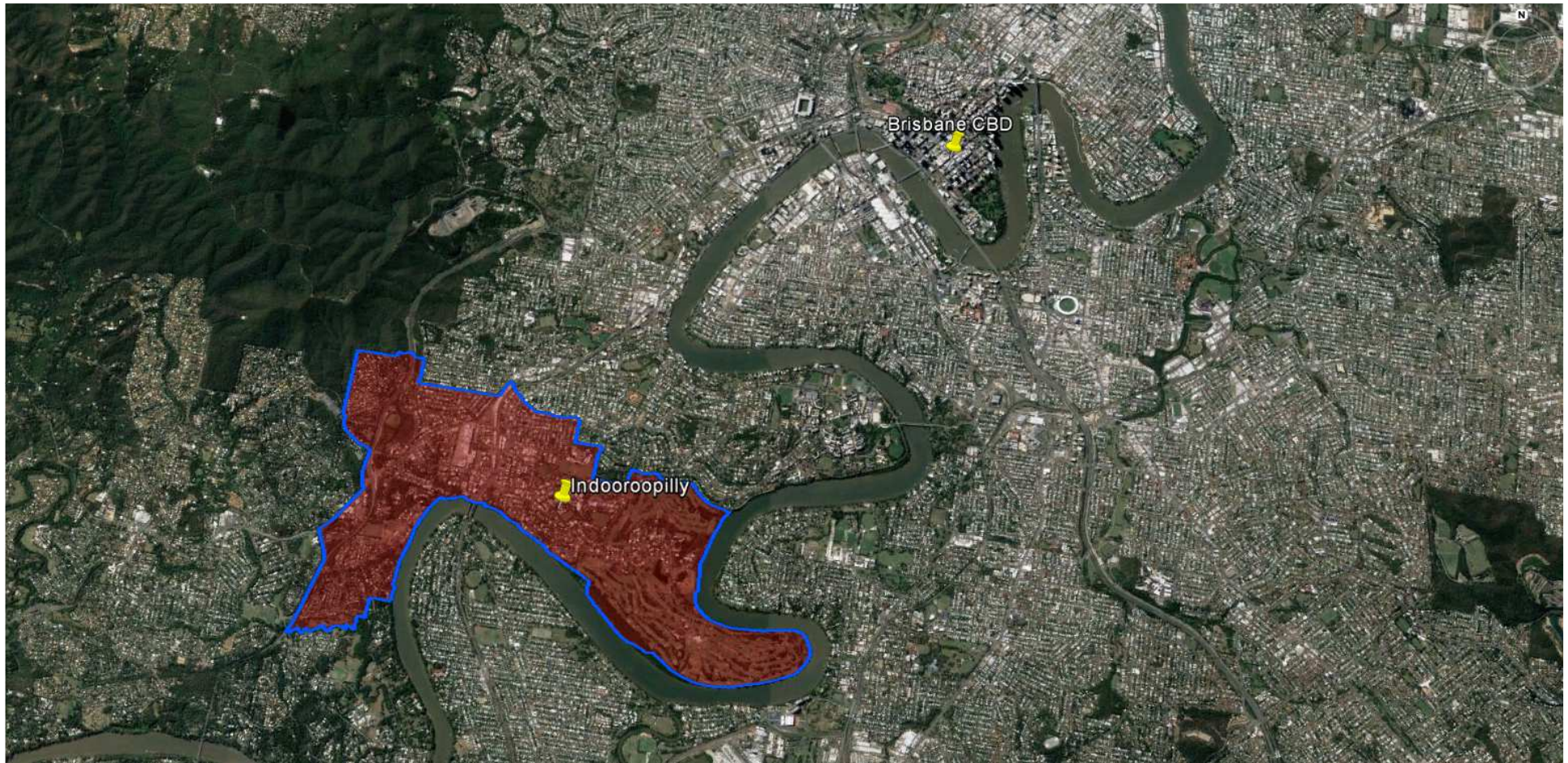
| Primary | | Secondary | |
|--|---|--|---|
| 1st Decade to 2026 | 2nd Decade to 2036 | 1st Decade to 2026 | 2nd Decade to 2036 |
| No new primary schools are likely to be required in the first decade | 0-1 new primary school may be required in the second decade | No new secondary schools are likely to be required in the first decade | No new secondary schools are likely to be required in the second decade |



Queensland Schools Planning Reference Committee
 Cross-Sectoral New Schools Demand Mapping 2016-2036
Brisbane City Council
SA2
Taigum-Fitzgibbon

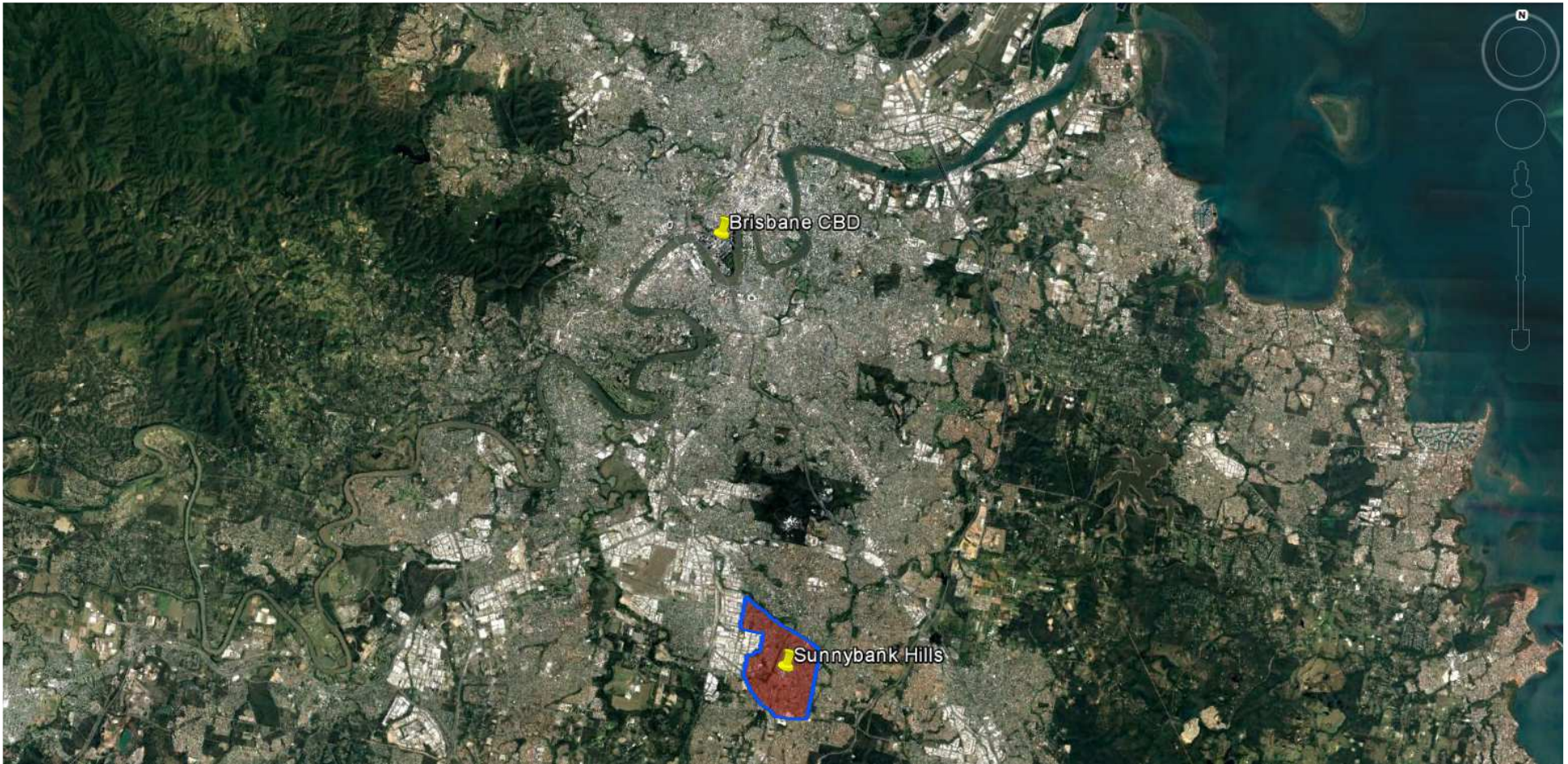
Findings

| Primary | | Secondary | |
|--|---|--|---|
| 1st Decade to 2026 | 2nd Decade to 2036 | 1st Decade to 2026 | 2nd Decade to 2036 |
| 0-1 primary school may be required in the first decade | 1 new primary school may be required in the second decade | 1 new secondary school may be required in the first decade | No new secondary schools are likely to be required in the second decade |



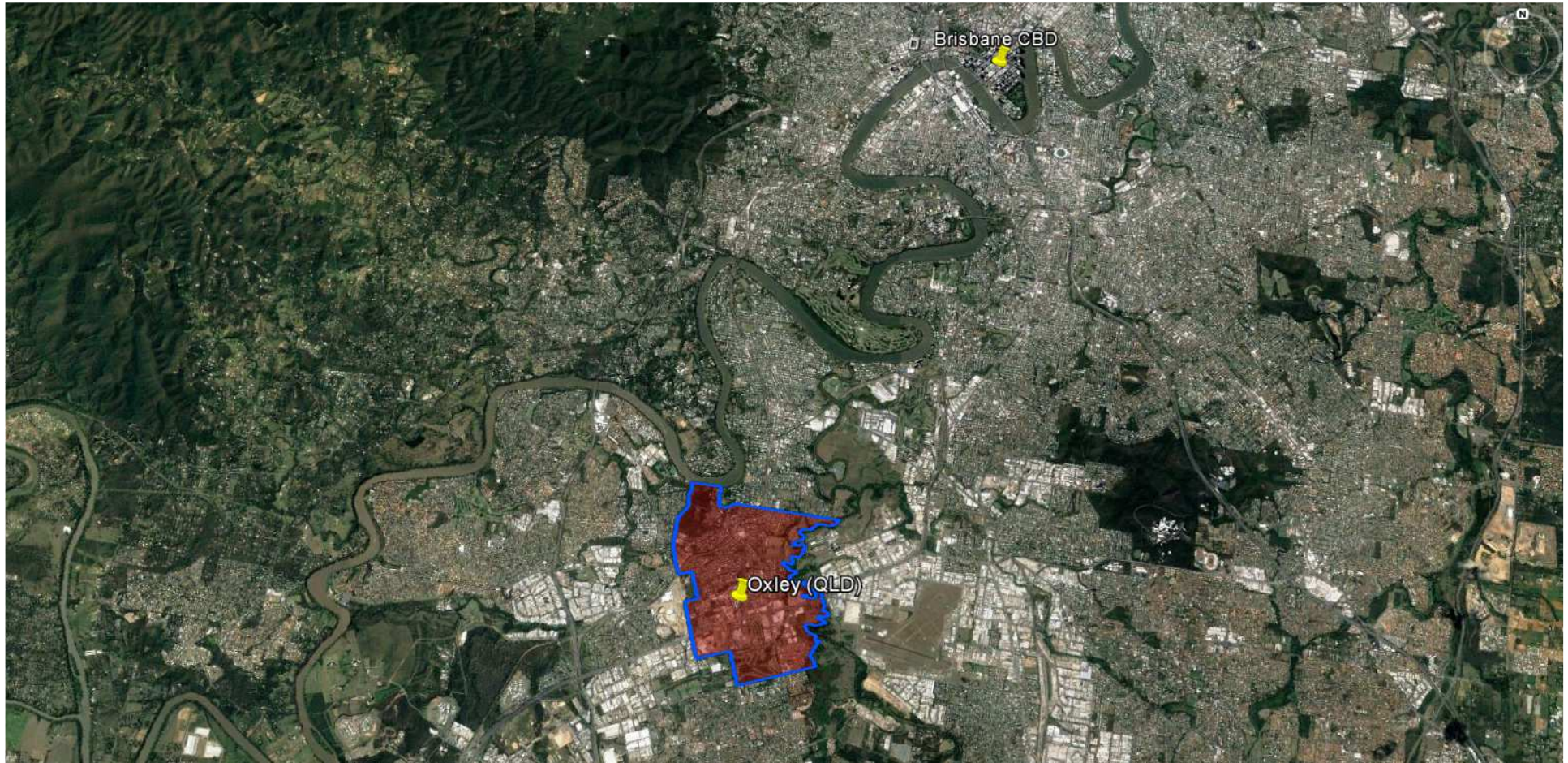
Queensland Schools Planning Reference Committee
 Cross-Sectoral New Schools Demand Mapping 2016-2036
Brisbane City Council
SA2
Indooroopilly

| Findings | | | |
|--|---|--|---|
| Primary | | Secondary | |
| 1st Decade to 2026 | 2nd Decade to 2036 | 1st Decade to 2026 | 2nd Decade to 2036 |
| 0-1 new primary school may be required in the first decade | No new primary schools are likely to be required in the second decade | No new secondary schools are likely to be required in the first decade. Expansion of existing sites likely to capture growth | No new secondary schools are likely to be required in the second decade |



Queensland Schools Planning Reference Committee
 Cross-Sectoral New Schools Demand Mapping 2016-2036
Brisbane City Council
SA2
Sunnybank Hills

| Findings | | | |
|---|---|--|---|
| Primary | | Secondary | |
| 1st Decade to 2026 | 2nd Decade to 2036 | 1st Decade to 2026 | 2nd Decade to 2036 |
| No new primary schools are likely to be required in the second decade | No new primary schools are likely to be required in the second decade | No new secondary schools are likely to be required in the first decade | No new secondary schools are likely to be required in the second decade |



Queensland Schools Planning Reference Committee
 Cross-Sectoral New Schools Demand Mapping 2016-2036
Brisbane City Council
SA2
Oxley

Findings

| Primary | | Secondary | |
|--|---|--|---|
| 1st Decade to 2026 | 2nd Decade to 2036 | 1st Decade to 2026 | 2nd Decade to 2036 |
| 1 new primary school may be required in the first decade | No new primary schools are likely to be required in the second decade | No new secondary schools are likely to be required in the first decade | No new secondary schools are likely to be required in the second decade |