



Responding to Growth

November 2024

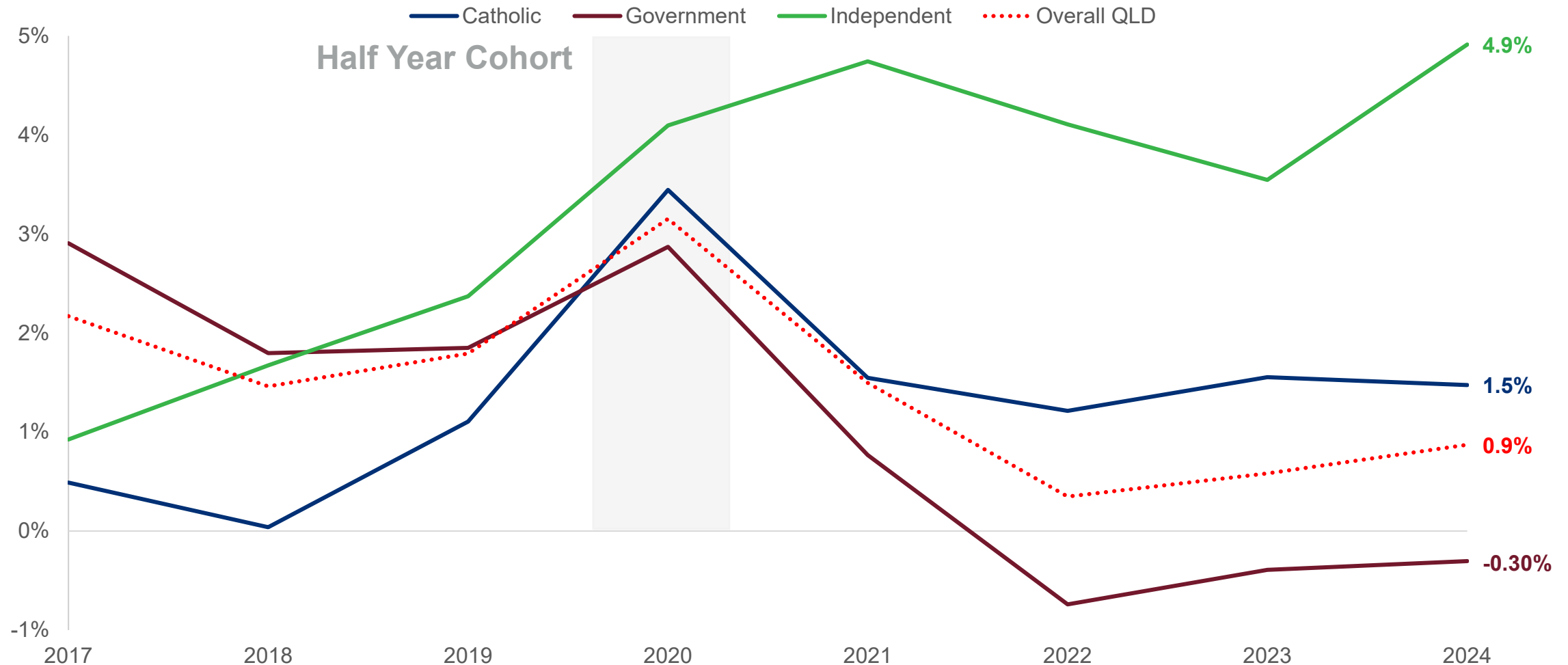
Agenda

- ❑ Queensland Catholic Schools Growth
- ❑ QCECs Capital Grant Program and response to growth
- ❑ QCECs Capital Strategy Policy Positions



Timeseries Enrolment Growth

2017 – 2024 Queensland State Census



Not for publication.

School Growth

2023 – 2024 State Census

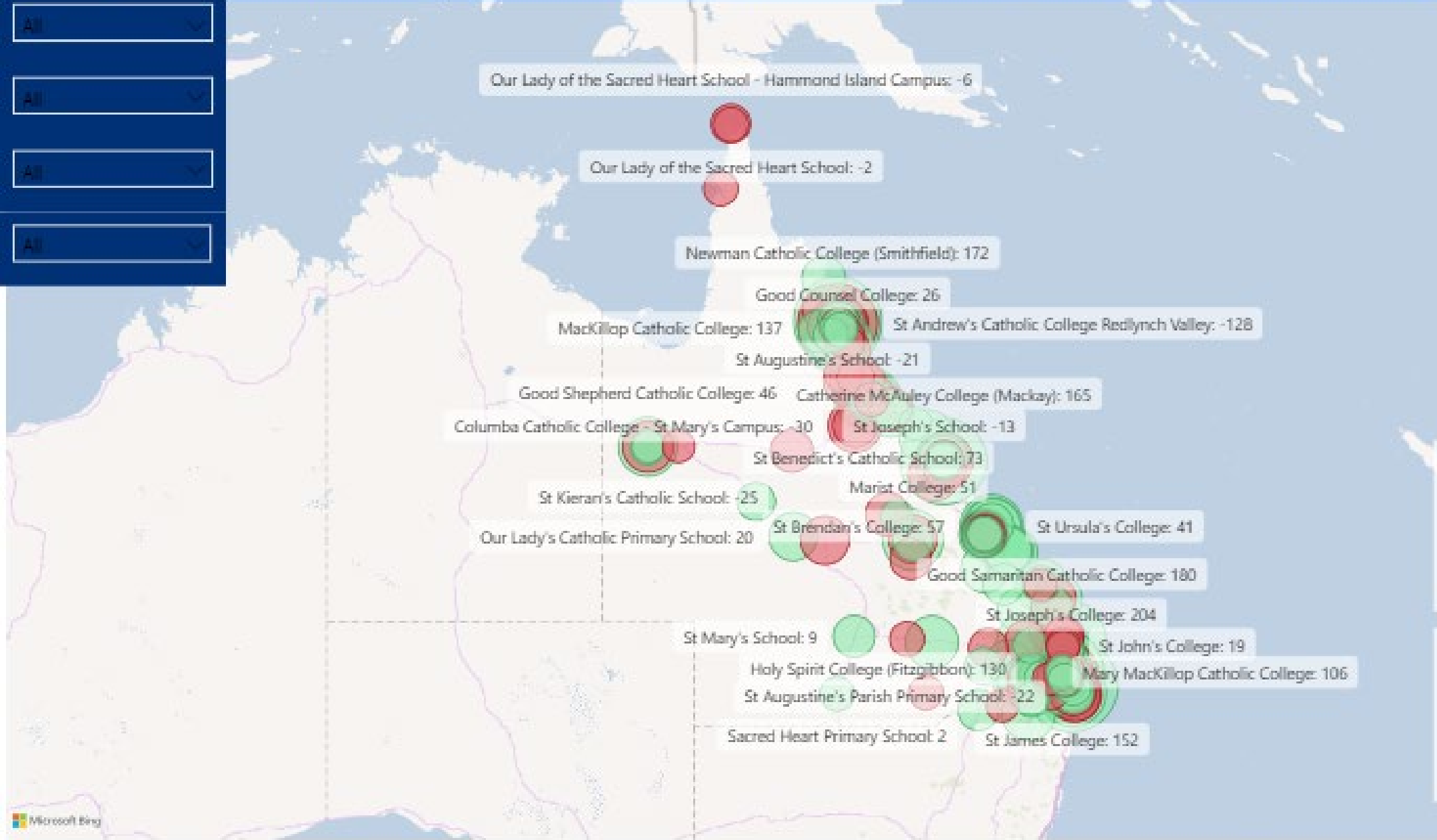
| Catholic School Authority | School Growth | | | | Overall Growth (%) | Enrolment Change |
|-----------------------------|---------------|-----------|------------|-----------|--------------------|------------------|
| | <-5% | >-5% < 0% | >= 0% < 5% | >5% | | |
| Archdiocese of Brisbane CEO | 24 | 45 | 55 | 22 | 0.8% | 641.8 |
| Diocese of Cairns CES | 7 | 7 | 8 | 8 | 1.0% | 116.3 |
| Diocese of Rockhampton CEO | 3 | 8 | 16 | 12 | 2.5% | 454 |
| Diocese of Toowoomba CSO* | 3 | 7 | 11 | 11 | 2.7% | 269 |
| Diocese of Townsville CEO | 10 | 2 | 11 | 6 | 1.1% | 140 |
| EREA Colleges | | 2 | 5 | 2 | 2.7% | 320 |
| EREA Flexible Schools | | 3 | 5 | 4 | 2.6% | 29 |
| Religious Institute* | 1 | 2 | 8 | 4 | 2.3% | 402.6 |
| Grand Total | 48 | 76 | 119 | 69 | 1.5% | 2,372.7 |

* Adjusted for 1 school moving from RI to Toowoomba CSO *Not for publication.*

- All
- All
- All
- All

+

-



2370.0

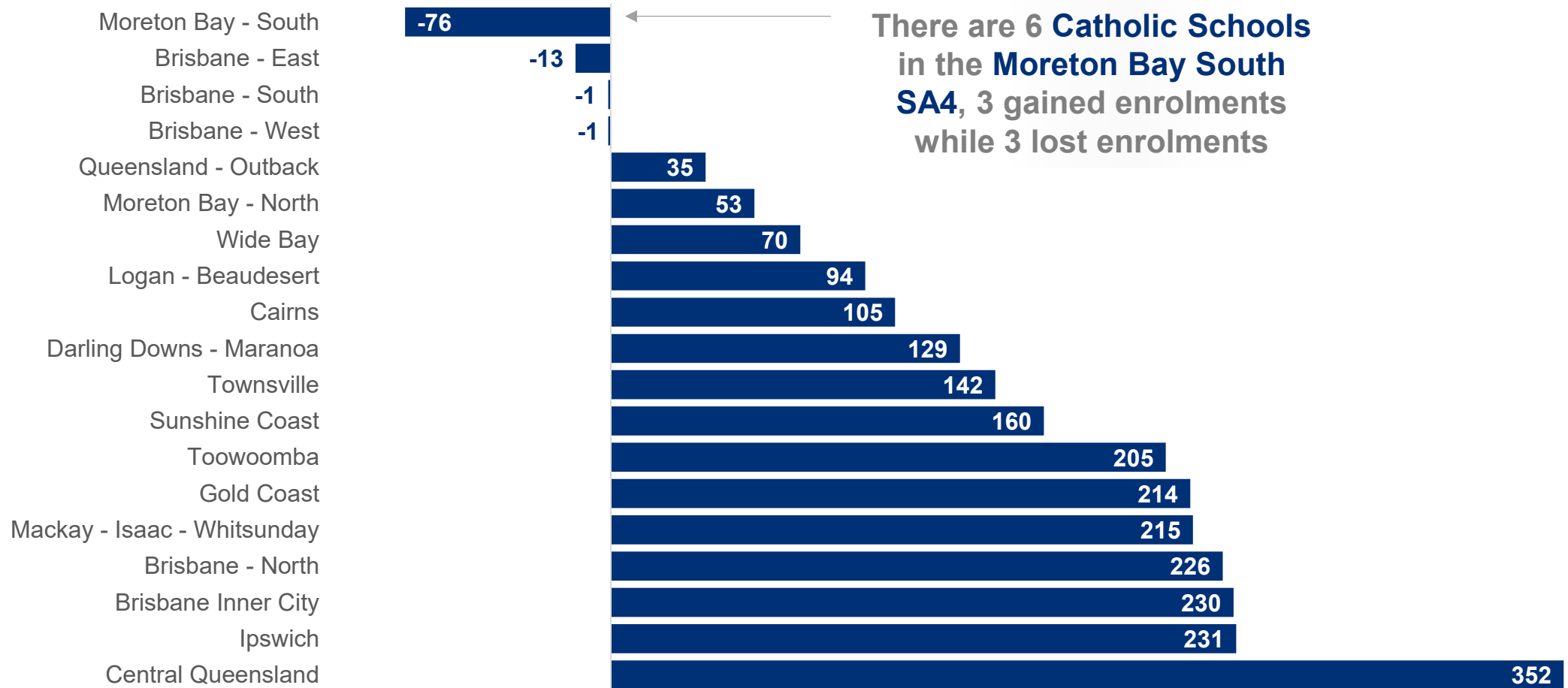
Total enrolment change

324

Number of schools

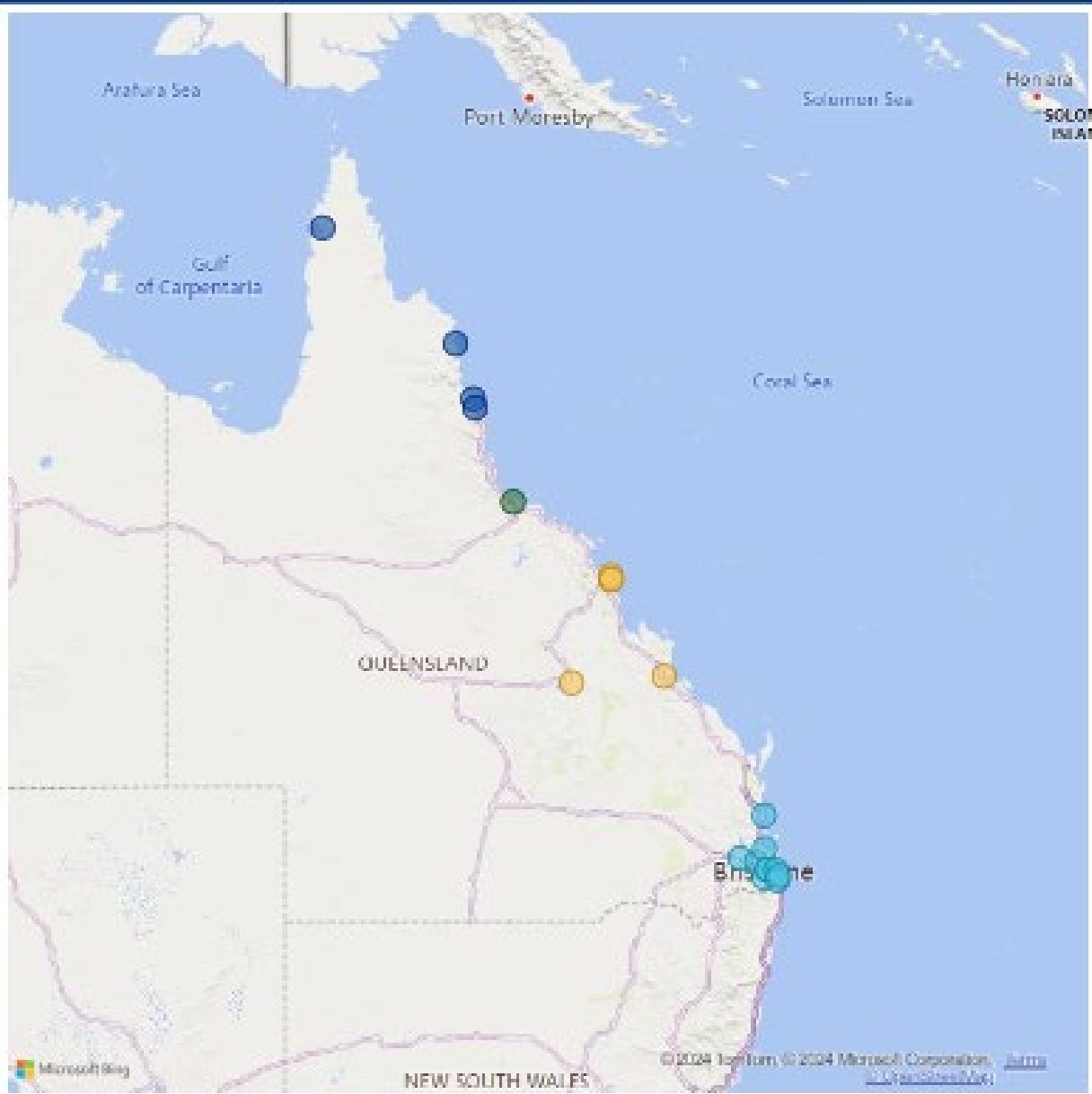
Additional Enrolments by SA4 – Catholic

2024 Queensland State Census

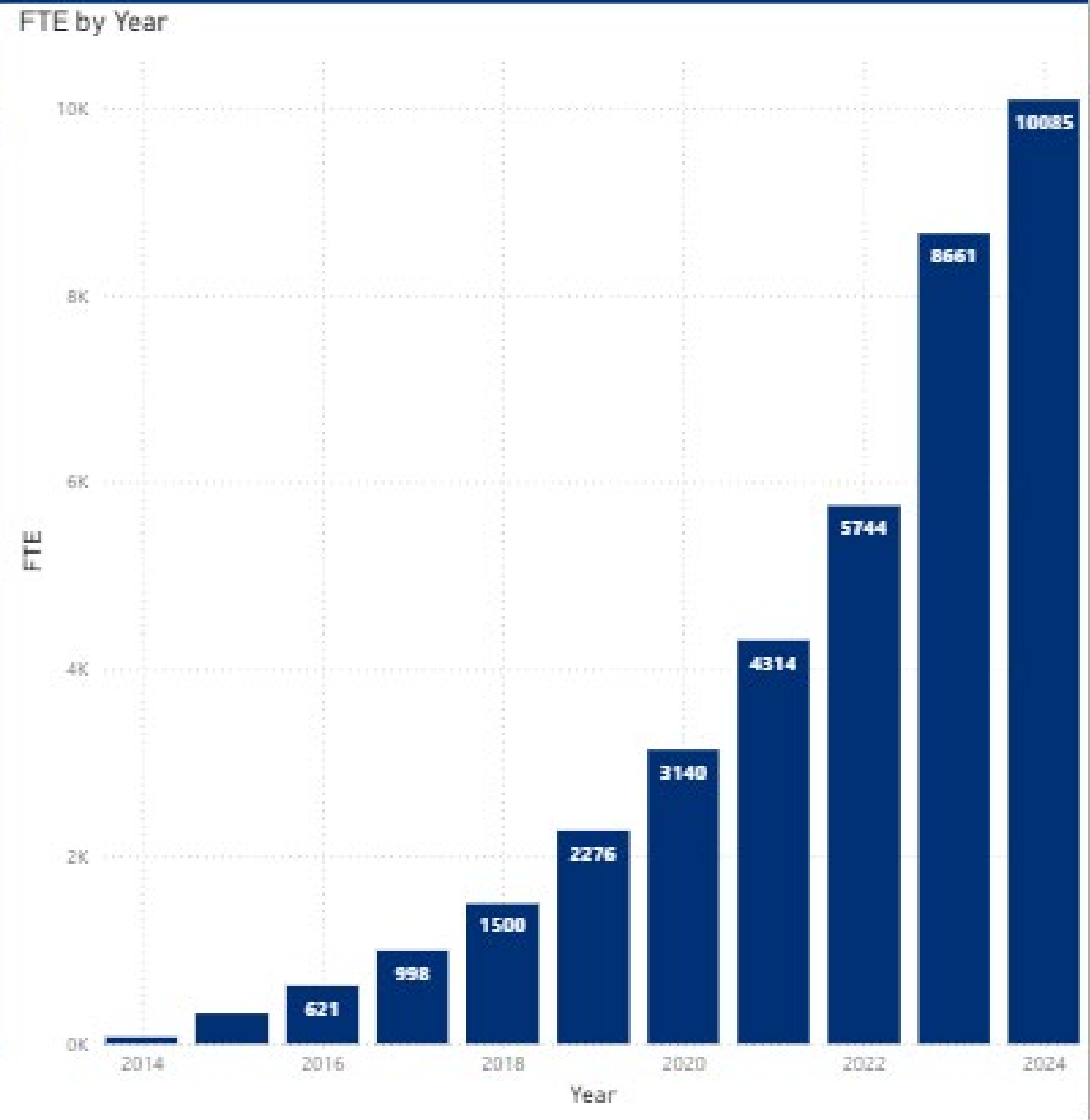


Queensland Catholic Schools Opened 14-24

All Schools



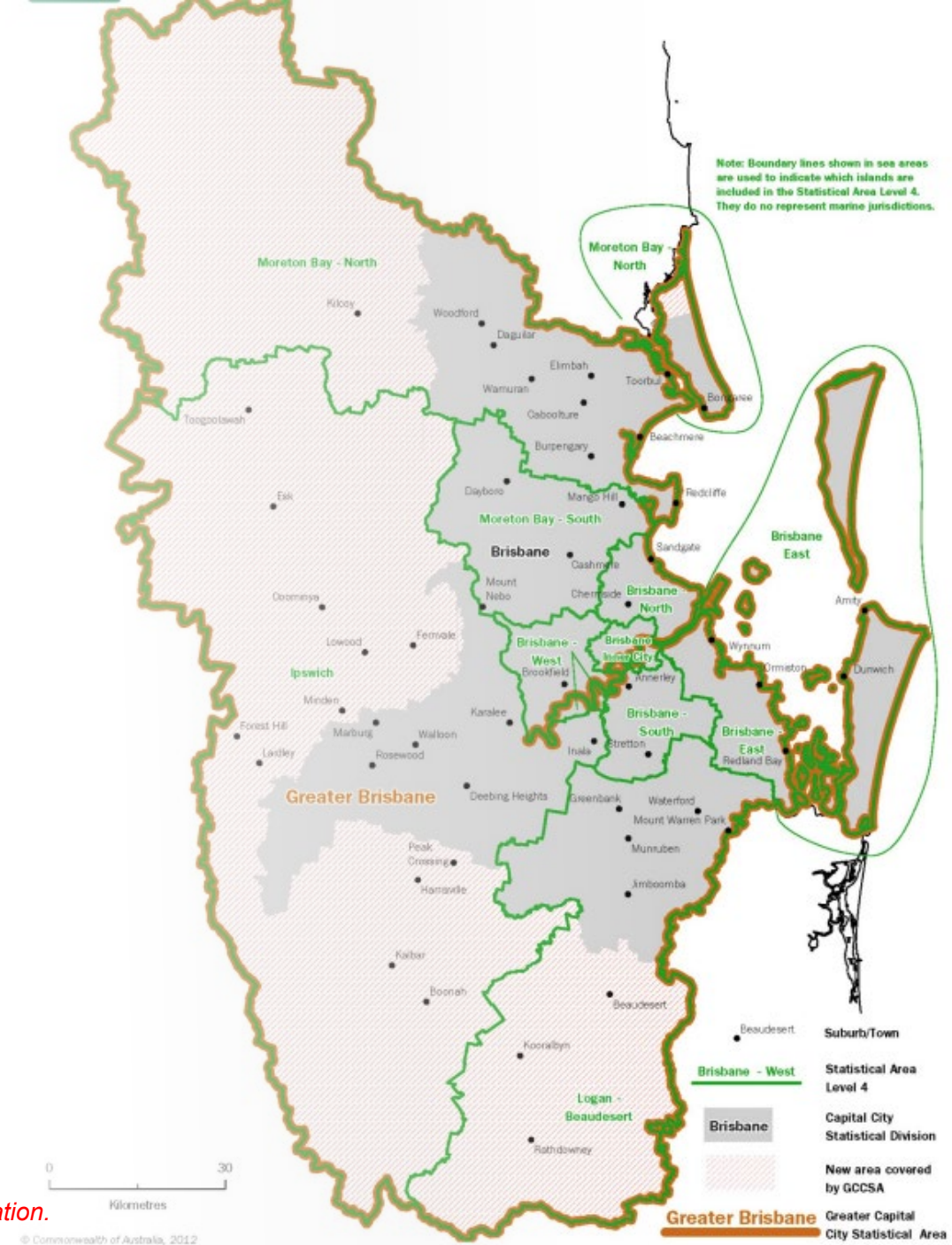
Diocese Brisbane Cairns Rockhampton Townsville



Greater Brisbane

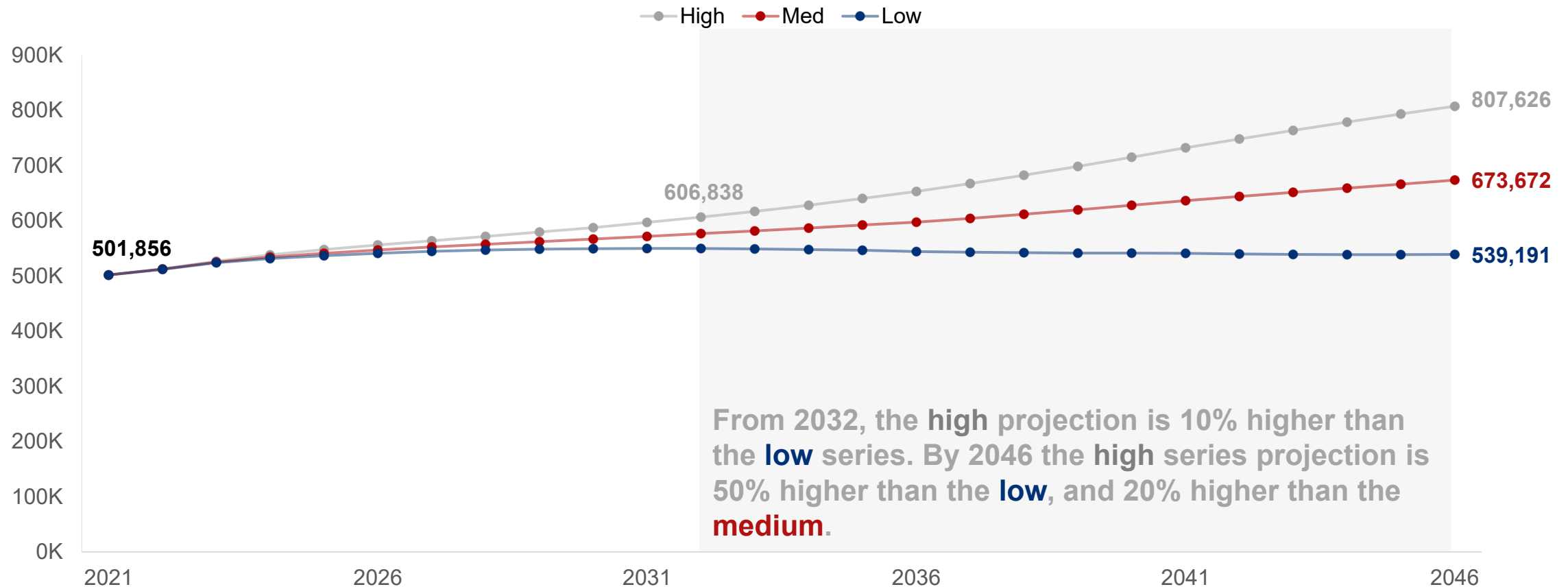
The greater capital city statistical area (GCCSA) of Greater Brisbane includes the following 9 SA4s:

- Moreton Bay – North
- Moreton Bay - South
- Ipswich
- Brisbane – North
- Brisbane – West
- Brisbane – Inner City
- Brisbane – South
- Brisbane – East
- Logan -Beaudesert



Population projection – Greater Brisbane

Queensland Government Projections: Projected School-Aged Children
(2021 – 2046) Updated 2023 Edition



Not for publication.

Greater Brisbane

2023 - 2024

| | Schools | | | Enrolments |
|----------|---------|------|-------|--------------|
| | gain | loss | total | change 23-24 |
| Catholic | 78 | 60 | 138 | 743 |
| Gov | 211 | 226 | 437 | 1,704 |
| Indpt | 110 | 40 | 150 | 3,688 |
| Total | 399 | 326 | 725 | 6,135 |

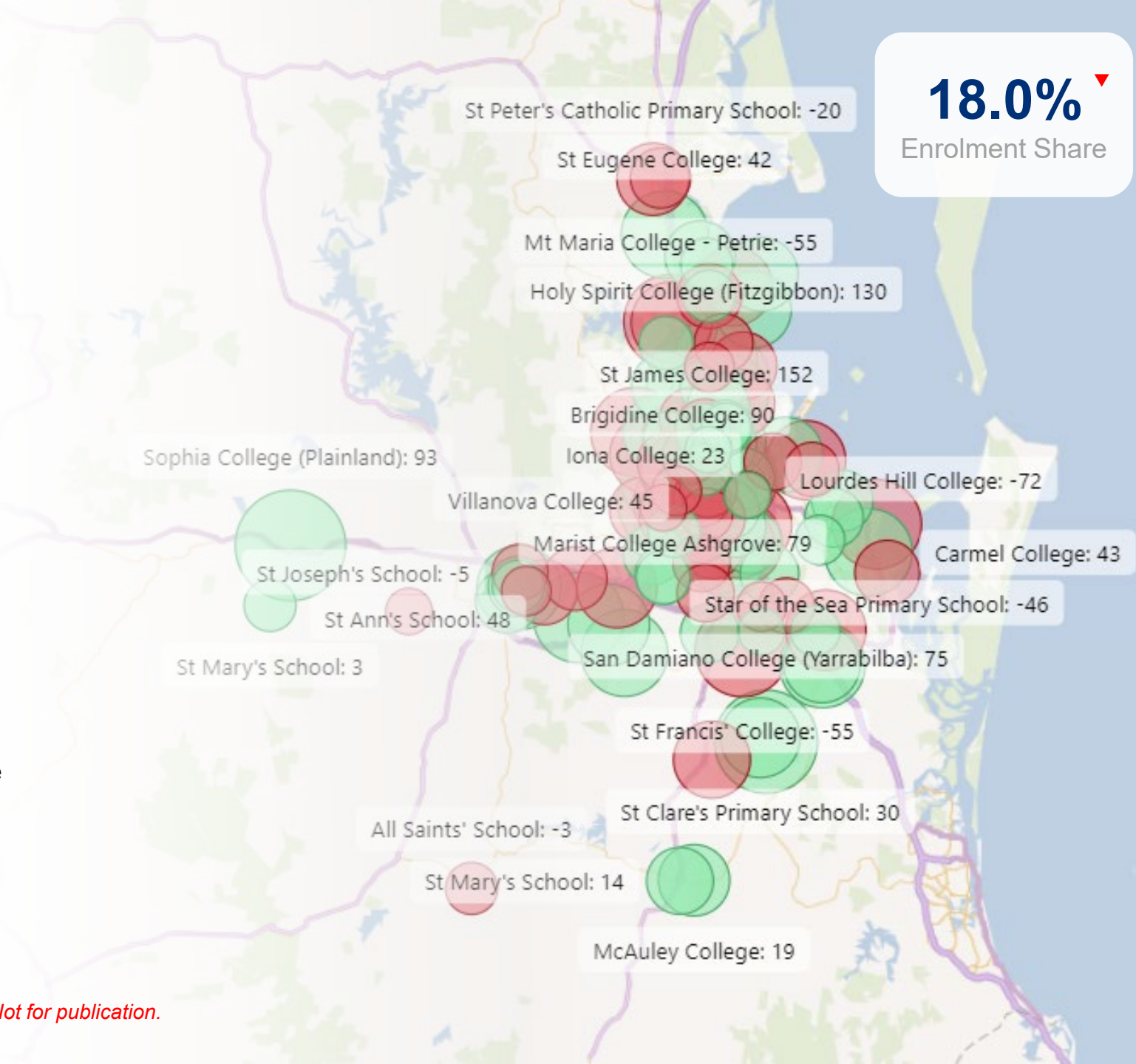
Overall, Catholic Schools had an increase of 743 students compared to 2023. Government schools (+1,704) and Independent schools (+3,688) also had increased enrolments in the Greater Brisbane area.

St James College (+152) and Holy Spirit College, Fitzgibbon (+130) had the largest enrolment increase of Catholic schools.

Lourdes Hill College (-72) and Mt Maria College, Petrie (-55) had the largest enrolment declines of Greater Brisbane Catholic Schools.

Faith Christian SDE (+446) in Underwood had the largest enrolment increase of Independent schools.

Not for publication.



Queensland Catholic Education Commission

*Supporting and advancing
Catholic education in Queensland*



Functions of QCEC

The Bishops and leaders of Religious Institutes and other incorporated bodies have delegated a number of responsibilities to QCEC. Key functions are to:

- **Negotiate and distribute government funding** to Catholic schools
- **Advocate and promote** the position of Catholic education
- **Liaise** with state and federal governments, partners and peak bodies, including the representative body for parents
- **Communicate and respond** to state-wide issues
- **Provide advice on industrial relations matters**, conduct independent investigations and lead enterprise bargaining processes in conjunction with and on behalf of Queensland Catholic school employing authorities
- **Facilitate state-wide collaboration** in areas such as curriculum, information and communication technologies, Indigenous education, religious education outside Catholic schools, education for ministry and social justice matters
- **Research, collect and manage** statistical, financial and educational information and data.

What are the rules that we work under

Australian Government

- Australian Education Act 2013 and Australian Education Regulation 2023
- Capital Grants Program Guidelines –2023
- <https://www.education.gov.au/other-commonwealth-funding-schools/capital-grants-non-government-schools>

State Government

- Education (Capital Assistance) Act 1993 and Education (Capital Assistance) Regulation 2015
- Capital Assistance Scheme Guideline
- <https://education.qld.gov.au/about-us/budgets-funding-grants/grants/non-state-school/state-capital-assistance-scheme>
- External Infrastructure Subsidy Scheme
- <https://education.qld.gov.au/about-us/budgets-funding-grants/grants/non-state-school/external-infrastructure-subsidy-scheme>

QCEC

- QCEC 2025 Capital Assistance Round – Important Dates
- QCEC 2025 Capital Assistance Guidelines
- QCEC 2025 Capital Assistance Guidelines – Special Assistance Schools
- QCEC 2025 External Infrastructure Subsidy Scheme Guidelines
- QCEC 2025 Capital Financial Contribution Guidelines
- QCEC 2024 Conditions of Compliance
- QCEC Appeal Process – Government Funding Programs

Capital Grants Breakdown (over 5-years)

| Capital Funding by Catholic School Authorities | 2020 | 2021 | 2022 | 2023 | 2024 |
|-------------------------------------------------------------|----------|----------|----------|----------|---------|
| Brisbane | \$16.0M | \$42.6M | \$28.0M | \$71.5M | \$44.6M |
| Toowoomba | \$7.5M | \$3.6M | \$6.6M | Nil | \$3.6M |
| Rockhampton | \$11.2M | \$1.1M | \$9.0M | \$1.8M | \$11.3M |
| Townsville | \$3.5M | \$8.8M | \$17.7M | \$15.7M | Nil |
| Cairns | \$25.8M | \$1.7M | \$22.5M | Nil | \$25.6M |
| Religious Institutes and Ministerial Public Juridic Persons | \$6.0M | \$13.0M | Nil | \$1.0M | \$4.1M |
| Special Assistance Schools | - | - | - | - | \$4M |
| TOTAL GRANTS ISSUED | \$70M | \$70.8M | \$83.8M | \$90M | \$93.2M |
| TOTAL PROJECT APPLICATIONS RECEIVED IN EACH ROUND | \$182.4M | \$161.7M | \$104.1M | \$161.3M | \$149.4 |

QCEC STRATEGIC POLICY POSITIONS 2023 - 2028

Position 1 – Funding Pools

Pool A for existing schools is capped at \$10 million per capital assistance round.

Pool B for new schools is the remainder (\$89 million in 2024).

QCEC STRATEGIC POLICY POSITIONS 2023 - 2028

Position 2 – Size and Stages of Funding New Schools

Funding eligibility of new primary schools ceases when total enrolment reaches 350 students (equivalent to two streams).

Funding eligibility of new secondary schools ceases when total enrolment reaches **736 students** (equivalent to four streams).

Funding eligibility of new P-12 schools ceases when total enrolment reaches **1,086 students.**

Funding eligibility of new special assistance schools ceases when total enrolment reaches **90 students.**

QCEC STRATEGIC POLICY POSITIONS 2023 - 2028

Position 3 – Two New Schools per Year

No more than two (2) schools per round, with at least one (1) of the two (2) schools located in a high population growth area in a SEQ Local Government Area within the Archdiocese of Brisbane.

If there are no new schools seeking funding within the SEQ Local Government Area in a round, the Commission will limit funding for the commencement of new schools to no more than two (2) schools outside of the SEQ Local Government Area.

This two-school limit **does not apply to special assistance schools** or schools expanding into new primary or secondary year levels.

**QCEC Capital
Programs Team
Contact**

PH: 3316 5818

EMAIL:

capital@qcec.catholic.edu.au

