

# An introduction to the Queensland Schools Planning Reference Committee

18 August 2020



# A very brief history of education in Queensland

There is a long history of collaboration between the state and non-state education services in Queensland.



**Photograph: Gympie State High School (1924).**

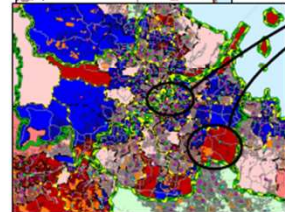
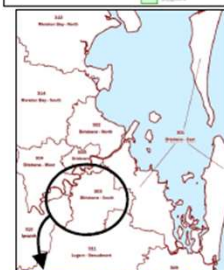


IPSWICH GRAMMAR SCHOOL.

# Queensland Schools Planning Commission - 2012

## Inner & South East Brisbane SA3s Primary

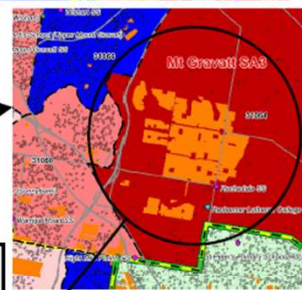
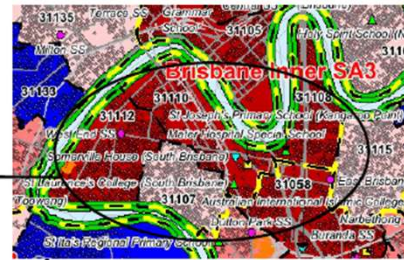
1st Decade: 2011-2021  
2nd Decade: 2021-2031



**Woolloongabba SA2,  
South Brisbane SA2 & West End SA2**

**1st Decade**  
Projected growth: 707  
There is uncertainty around the school population that will reside in higher density housing in these areas. Existing capacity may not be sufficient. Ongoing monitoring may be required.

**2nd Decade**  
Projected growth: 1,280  
There is uncertainty around the school population that will reside in higher density housing in these areas. Existing capacity may not be sufficient. Ongoing monitoring may be required.



**Rochedale - Burbank SA2**

**1st Decade**  
Projected growth: 1,136  
Existing capacity may not be sufficient. New or expanded infrastructure may be required. Further consultation is required with Brisbane City Council.

**2nd Decade**  
Projected contraction: 18  
Additional capacity added in the 1st decade will be sufficient.

If not specified here, it is assumed that all other projected growth in this SA3 region will be accommodated in existing, local schools, either with or without expansion of existing capacity. For further details refer to the associated report



# Queensland Schools Planning Reference Committee

- Membership includes:
  - Representatives from all three education sectors
  - Local Government Association of Queensland
  - Queensland Government Statistician's Office
  - Community Hubs and Partnerships Team

## Queensland Schools Planning Reference Committee

The Queensland Schools Planning Reference Committee (QSPRC)'s purpose is to establish and maintain a consultative, cross-sector process to:

- assess the impact of population growth and to inform the planning of new schools in Queensland
- provide advice to Government on general issues relating to the planning of new schools, and possible reforms to assist in the timely, collaborative and efficient delivery of educational infrastructure for growth areas
- investigate and consult further on the role of a Schools Planning Forum, proposed to meet on an annual basis, with representatives from the education sectors, local government, state government planning department, and development industry to discuss issues relating to planning for new schools.

### QSPRC background

The Queensland School Planning Commission was a Ministerial Advisory Committee tasked in 2012 with improving processes for the planning of Queensland schools in consultation with key sectorial stakeholders. The work of the commission was completed in July 2014 following submission of a second and final report and delivery on its ministerial mandate.

A recommendation from the commission's final report was to continue ongoing consultation about future demand mapping for new state and non-state school requirements in collaboration with key stakeholders. Consequently, the QSPRC will continue to consult with cross-sectoral stakeholders to provide advice on the planning and delivery of future schools in Queensland.

### QSPRC membership

#### QSPRC committee chair

Title	Area
Executive Director	Infrastructure Strategy and Planning, Infrastructure Services Branch, Corporate Services Division, Department of Education (DoE)

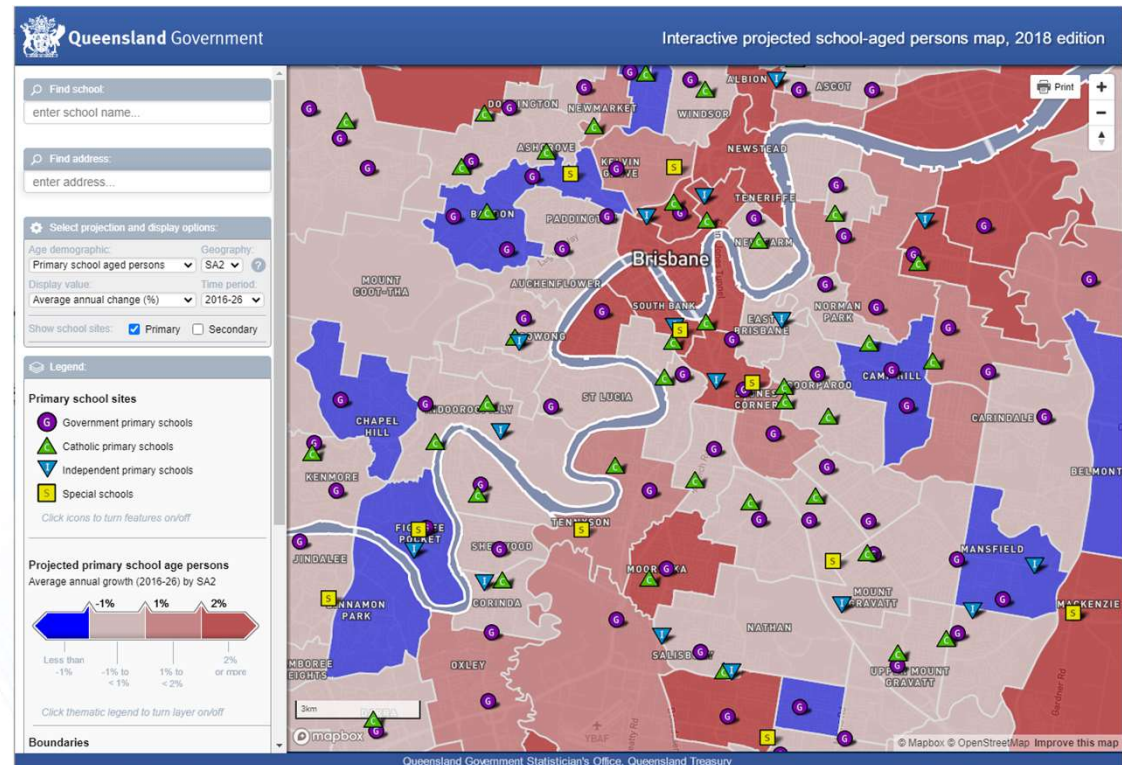
#### QSPRC committee members

Title	Area
-------	------

<https://education.qld.gov.au/schools-educators/school-types/new-schools/qsprc>

# Achievements and outcomes from QSPC and QSPRC

- Planning reform
- Collaboration
- Information



# Where to from here

- Strong support from key stakeholders
- Continuing engagement with Local Government
- Regular demand mapping

Map of Cairns Regional Council showing the Statistical Areas Level 2 Assessed

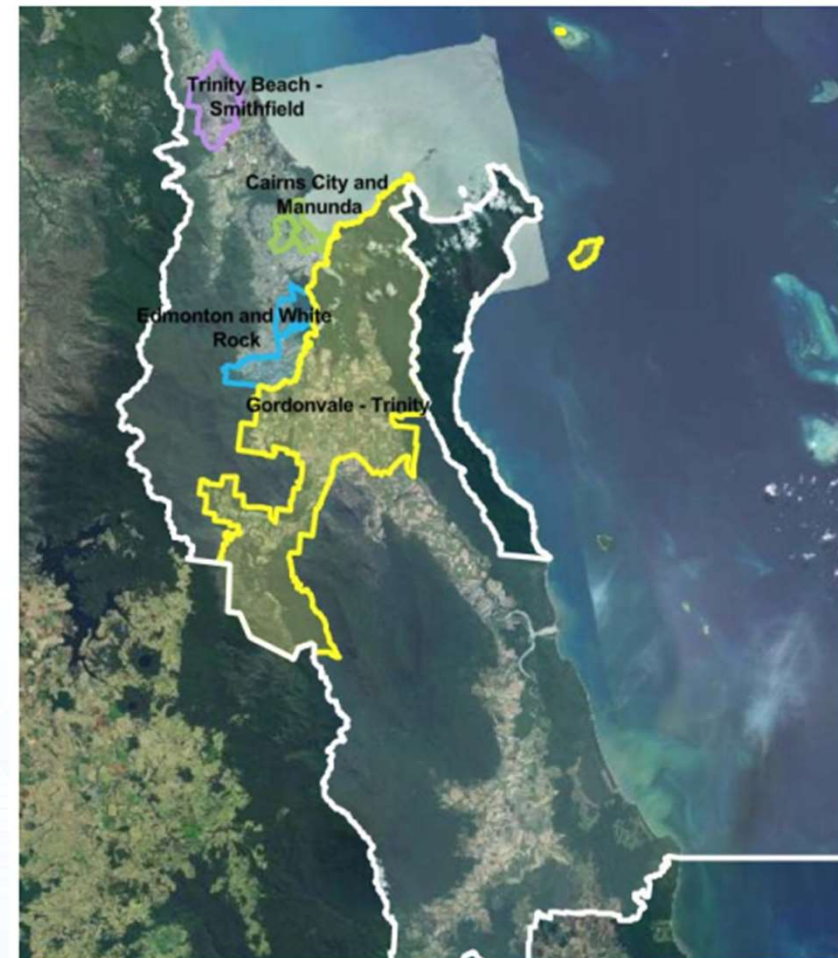


Image from Queensland Globe.