

Enrolment trends, growth and demand mapping

Queensland Schools Planning Reference Committee

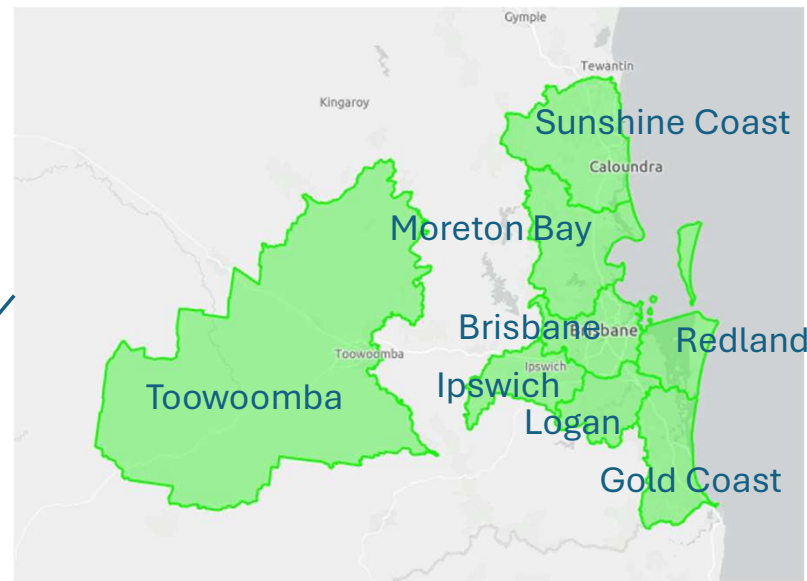
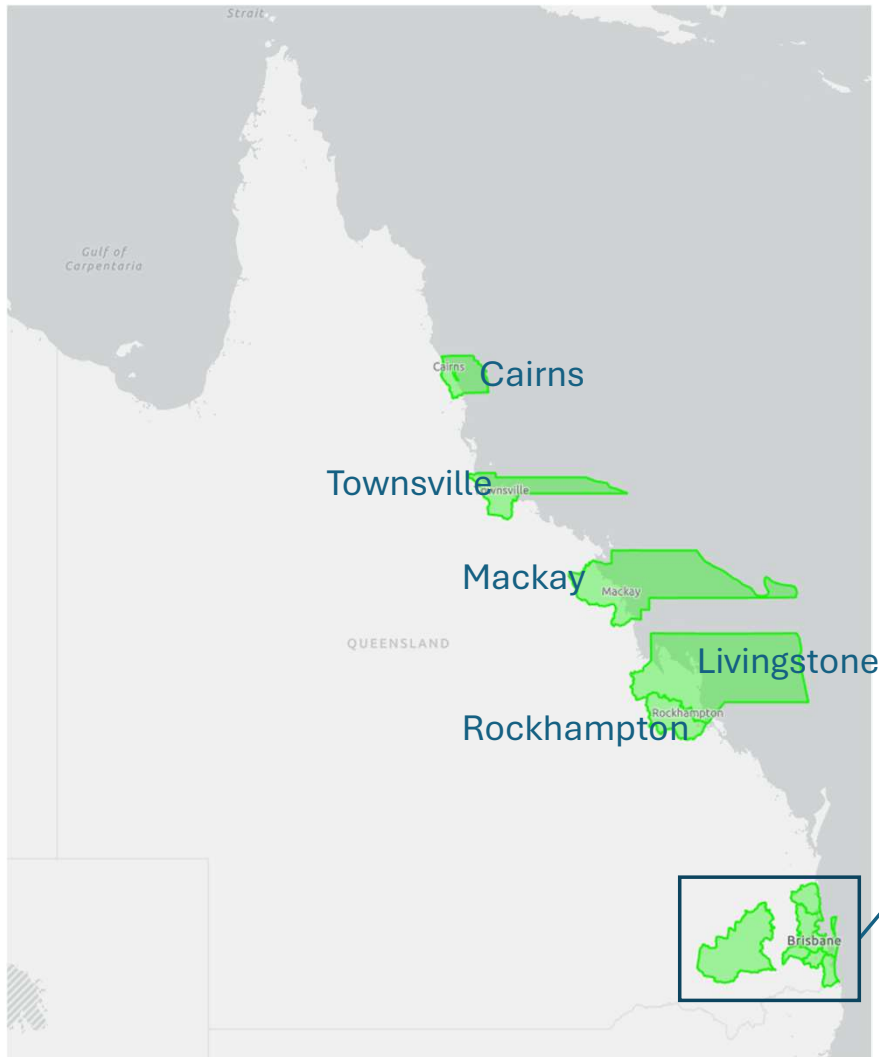
Schools Planning Forum

31 October 2024



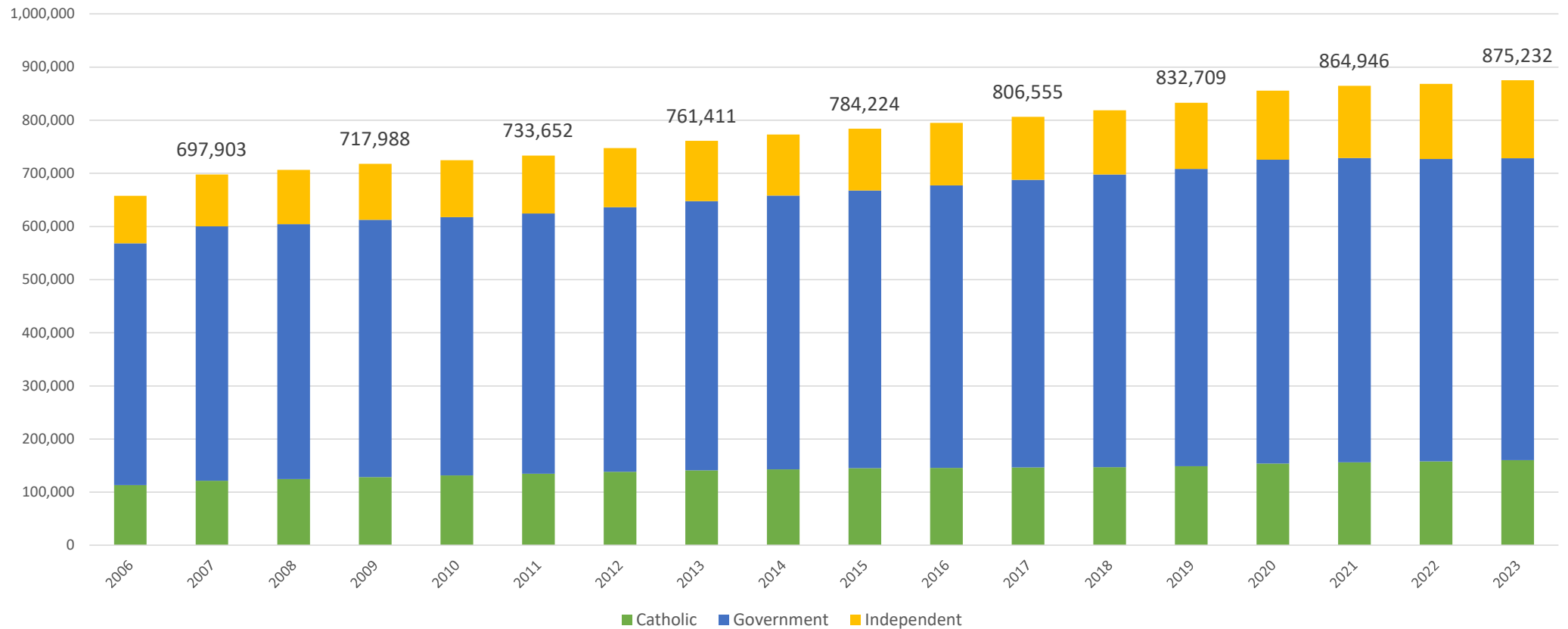
QSPRC cross-sectoral demand mapping

- Working with local governments, government and non-government education stakeholders, QGSO and other government partners to better understand the impacts of population growth on school networks across Queensland.



Enrolment growth in Queensland

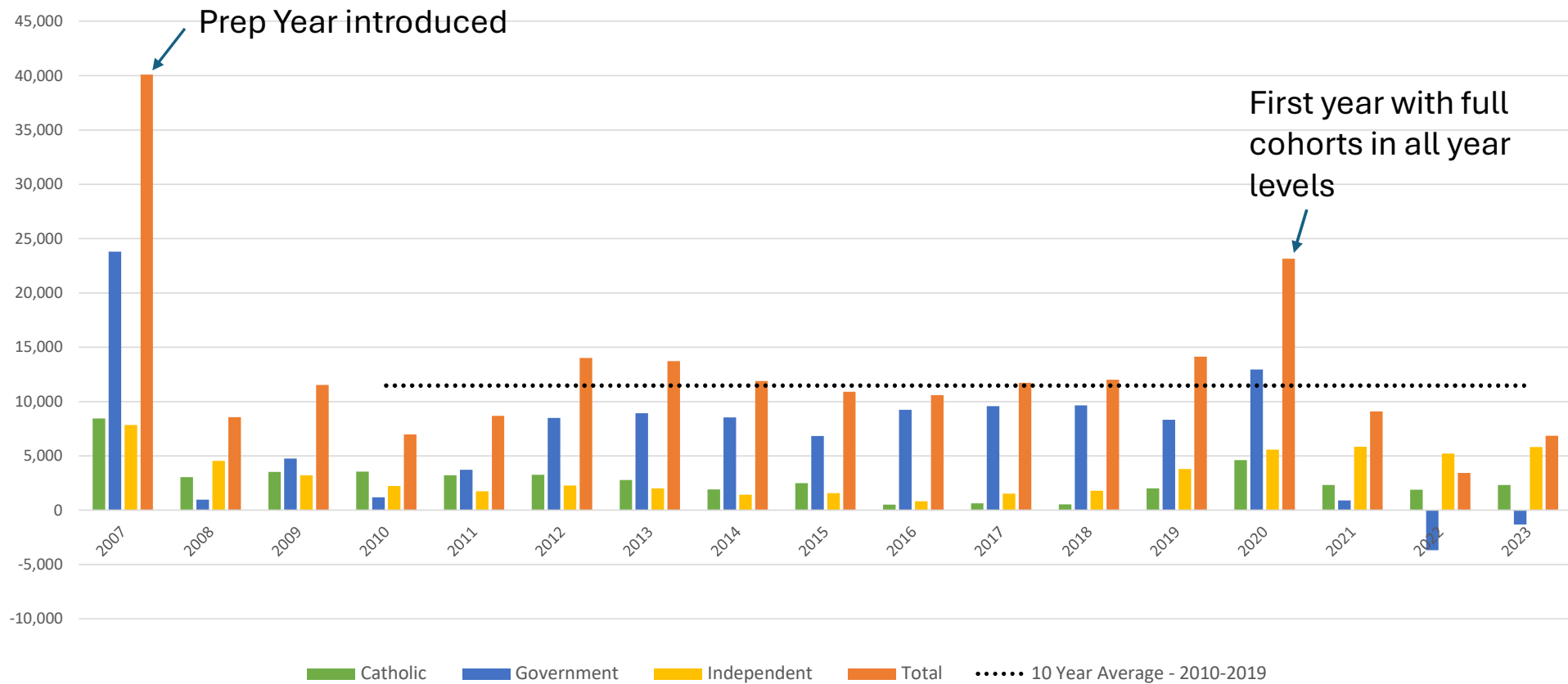
Full-time enrolments in Queensland schools



Australian Bureau of Statistics, Schools, 2023

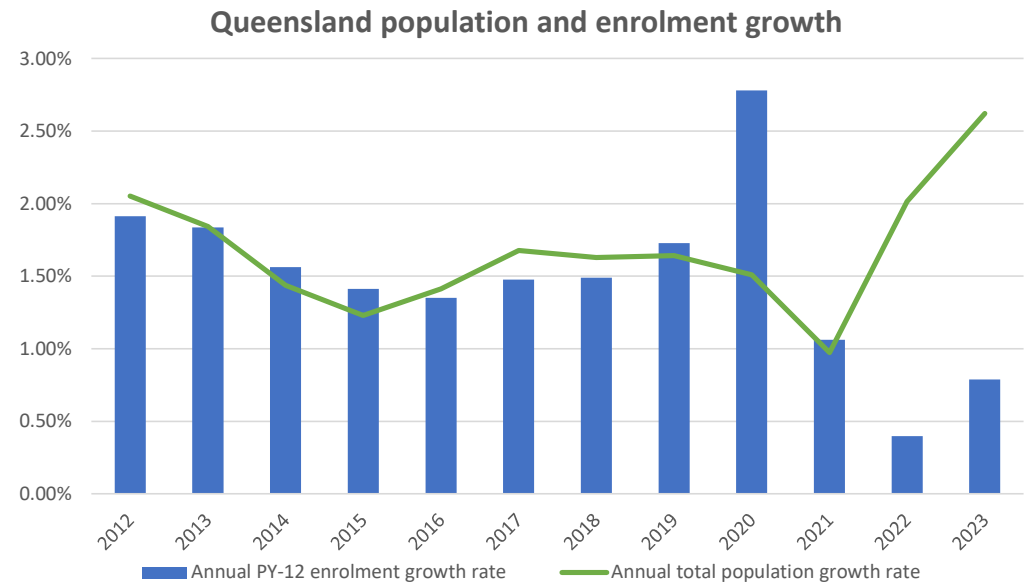
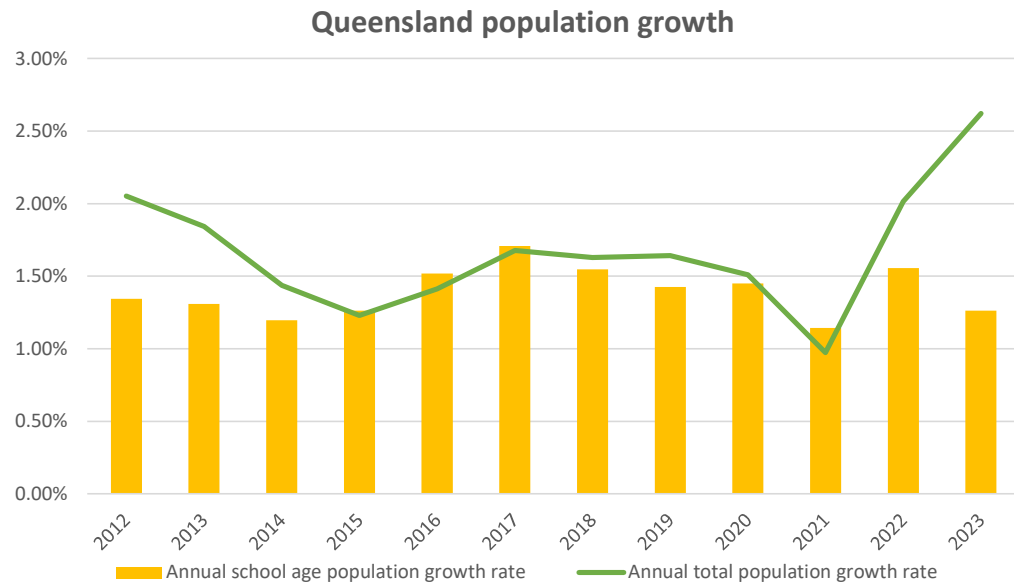
Enrolment growth in Queensland

Annual full-time enrolment growth in Queensland Schools



Australian Bureau of Statistics, Schools, 2023

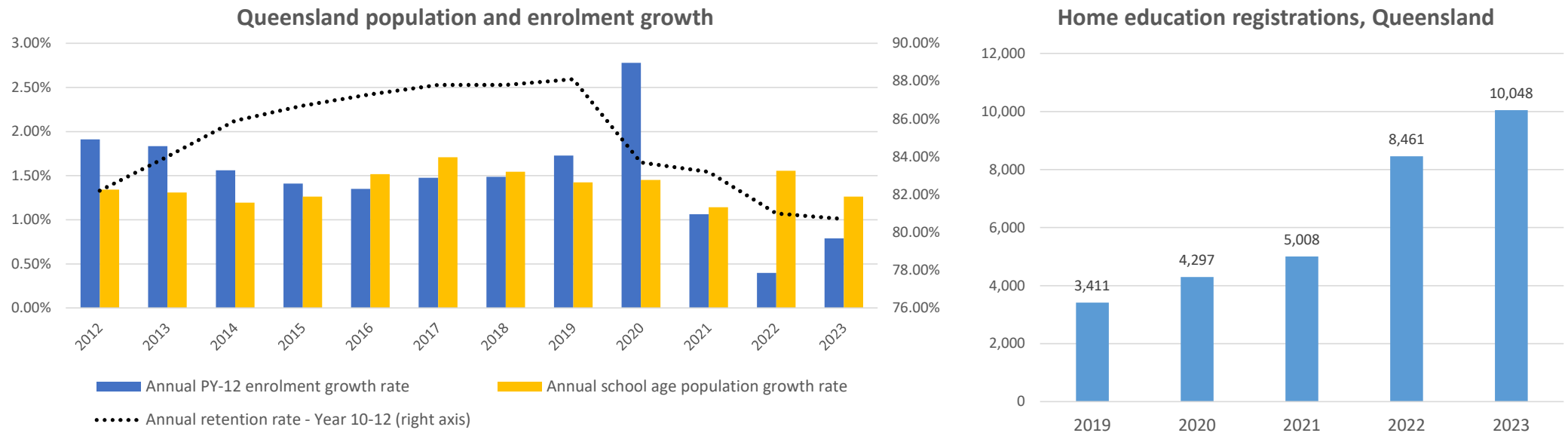
Population and enrolment growth



Australian Bureau of Statistics- Schools, 2023 and Population by age and sex, regions of Australia

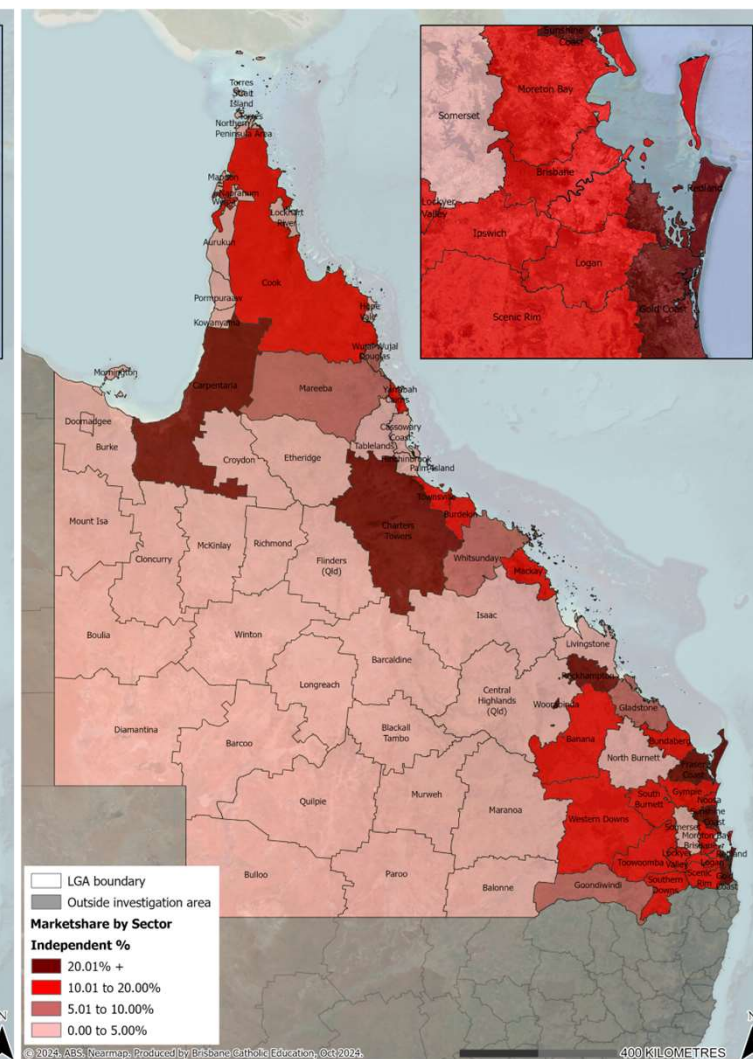
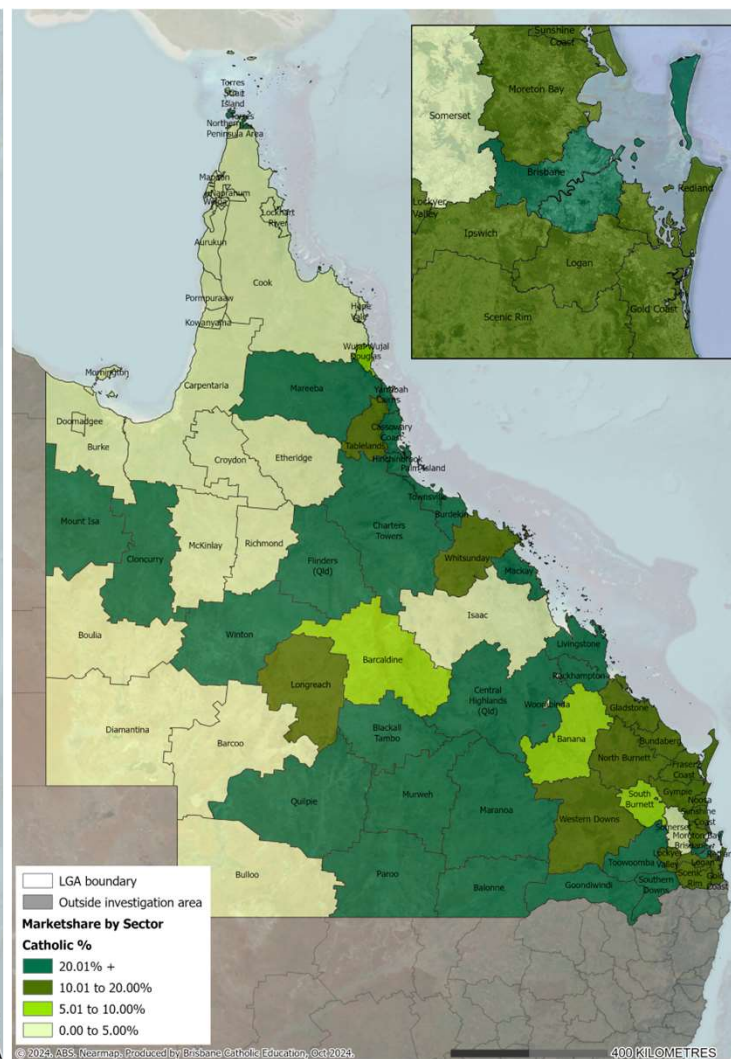
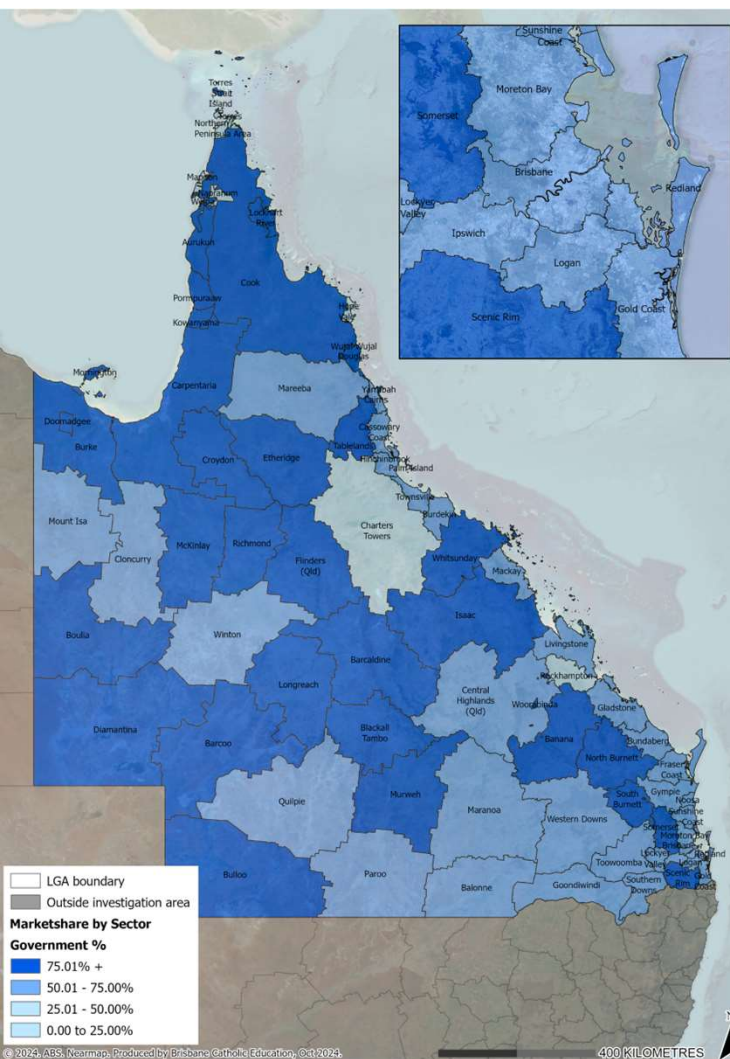
- The high rate of total population growth experienced in Queensland since the COVID lockdowns ended has not translated to growth in the school-age population.

Population and enrolment growth



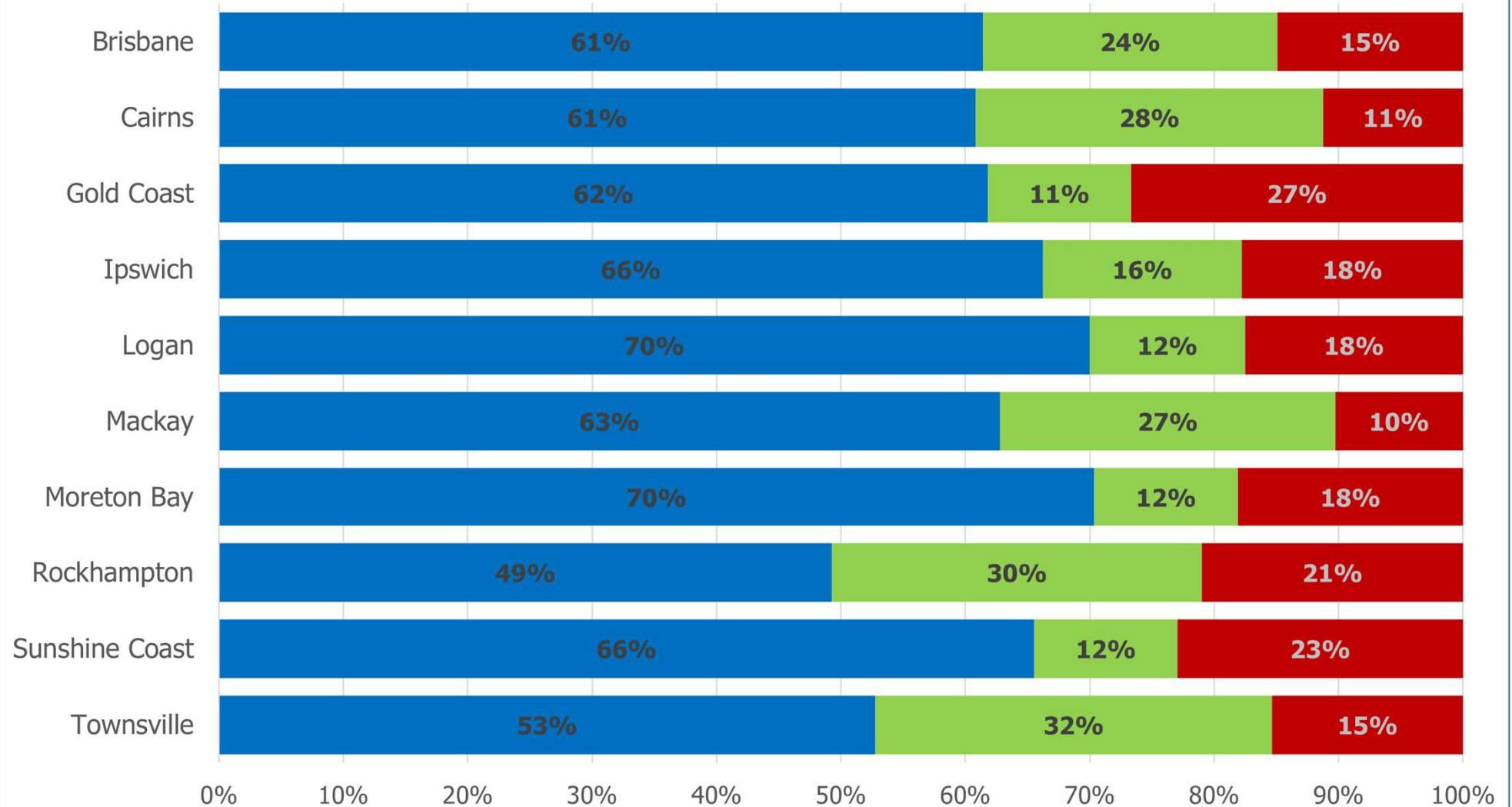
- The growing gap between the rate of school-age population growth and the rate of enrolment growth can be linked to declining retention rates in Year 10 to 12 and growing home education registrations.

Students by education sector



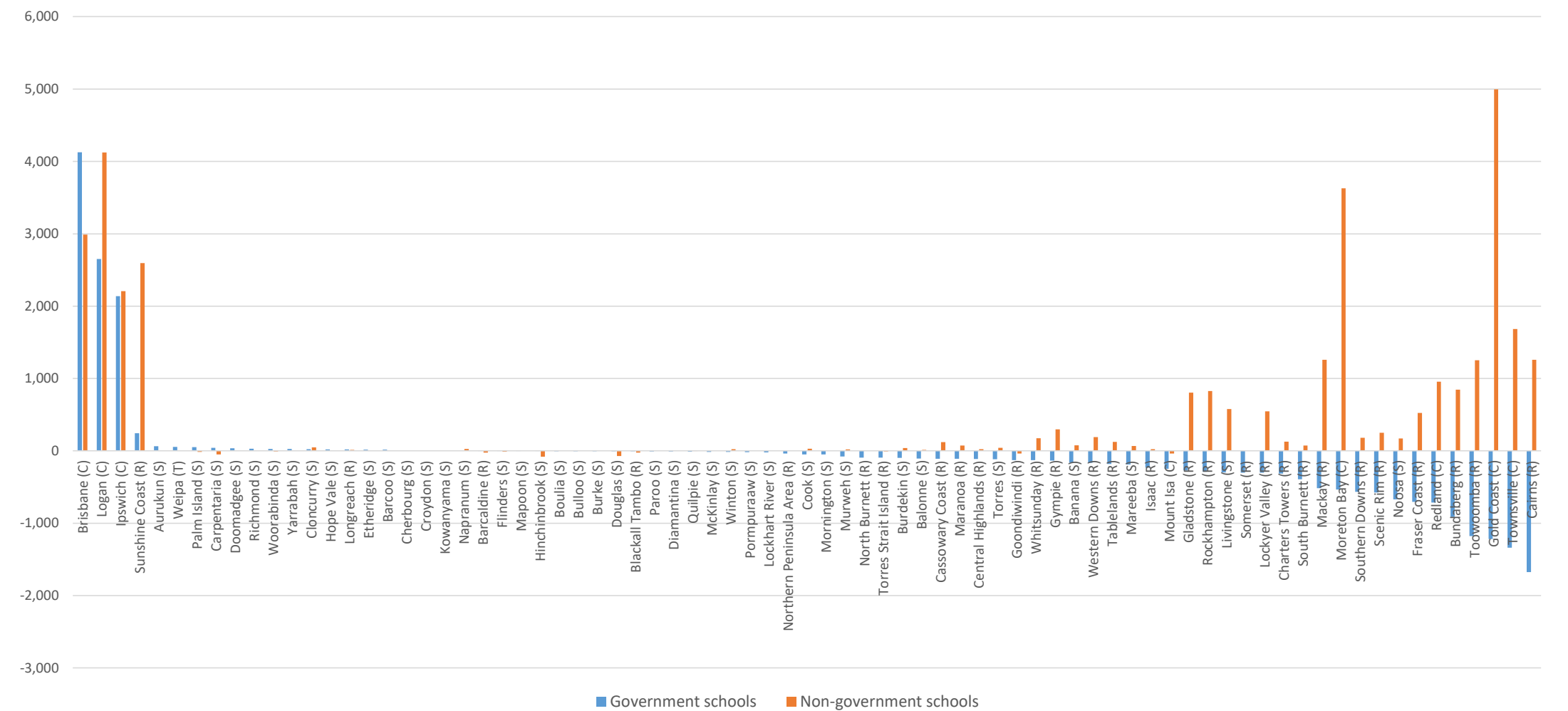
Marketshare by Sector

■ State % ■ Catholic % ■ Independent %



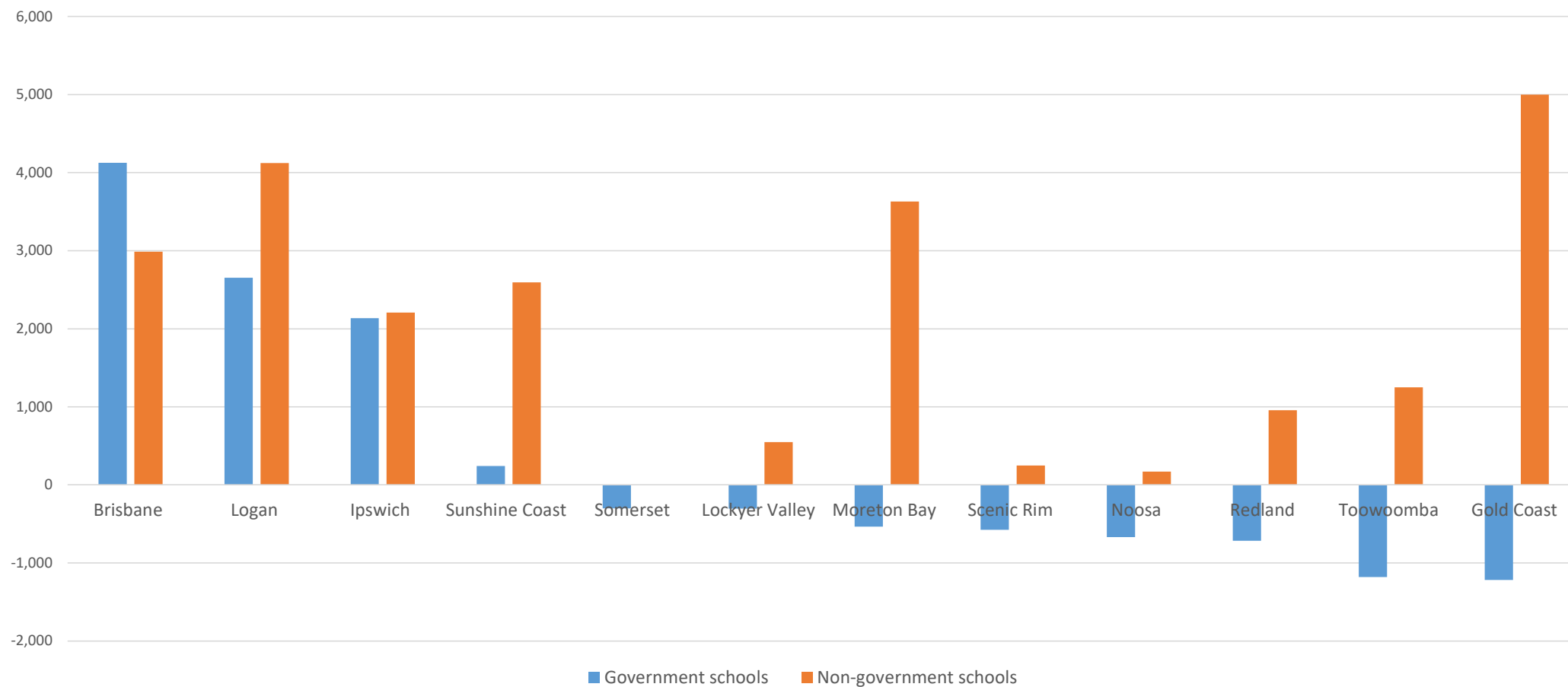
Regional enrolment trends

Enrolment growth by Local Government Area - 2020-24



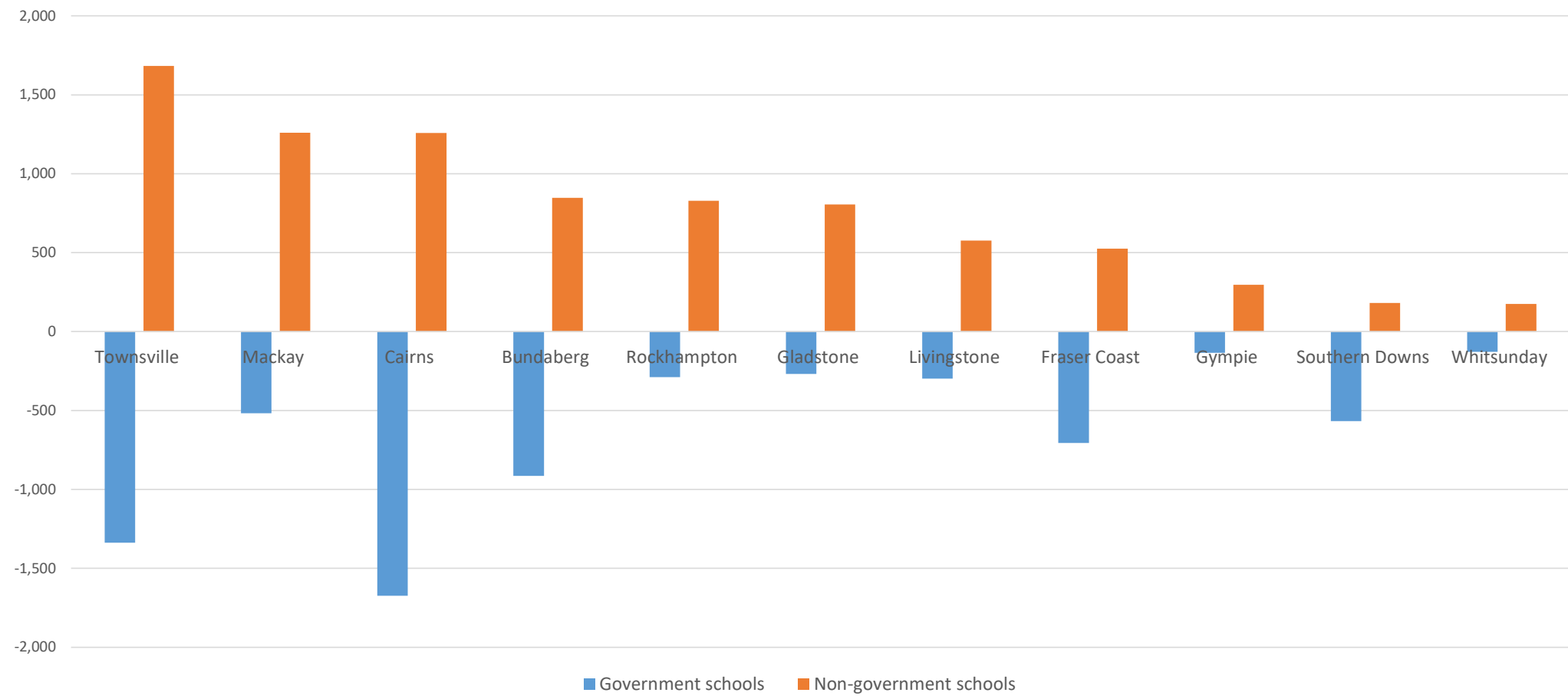
Regional enrolment trends – South-east Qld

Enrolment growth by Local Government Area - 2020-24

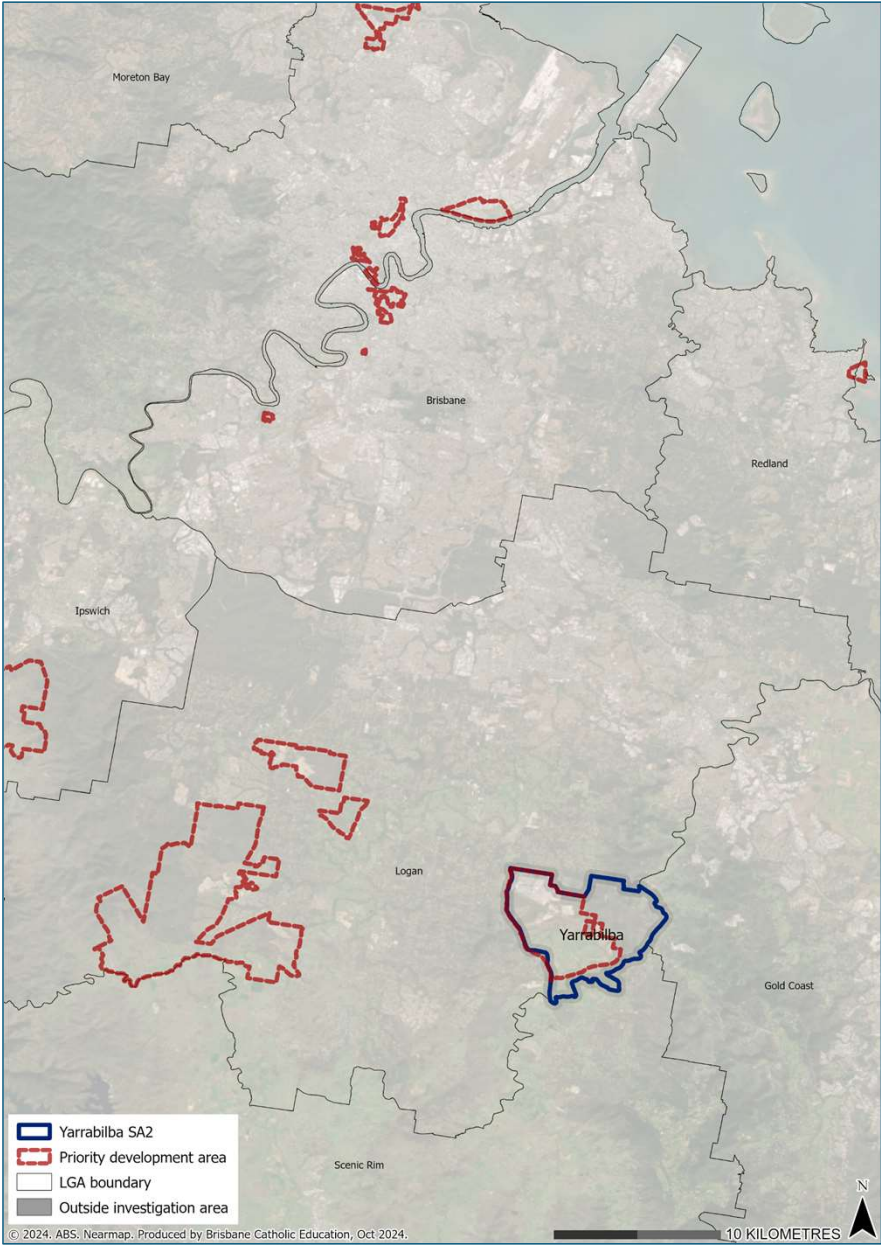
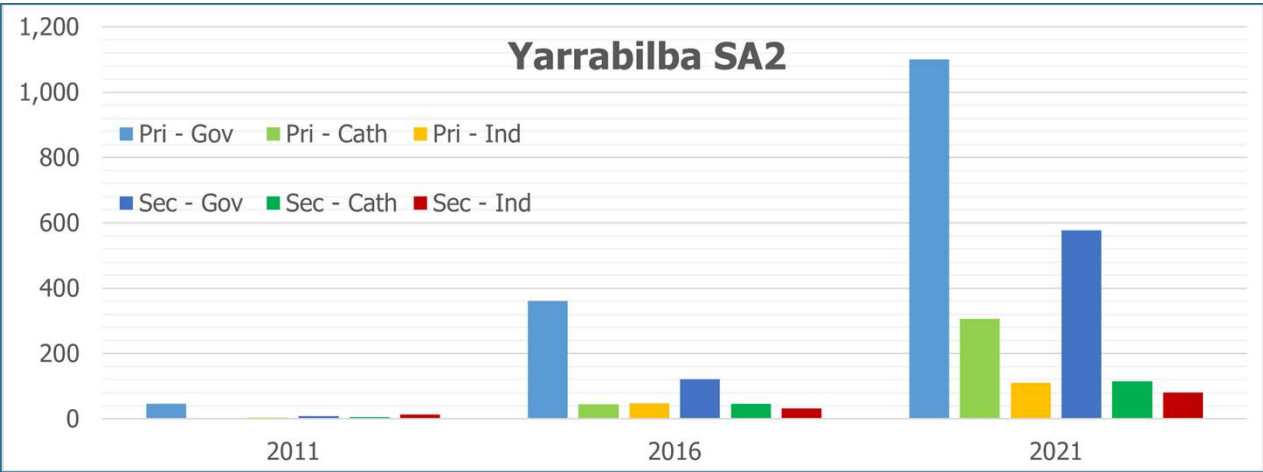
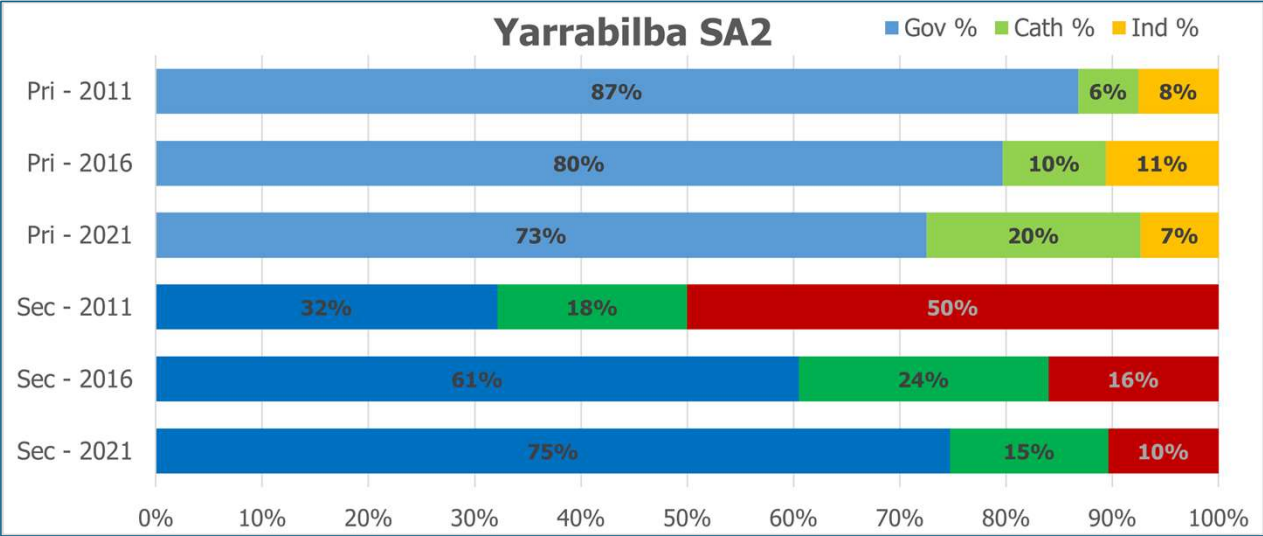


Regional enrolment trends – Regional centres

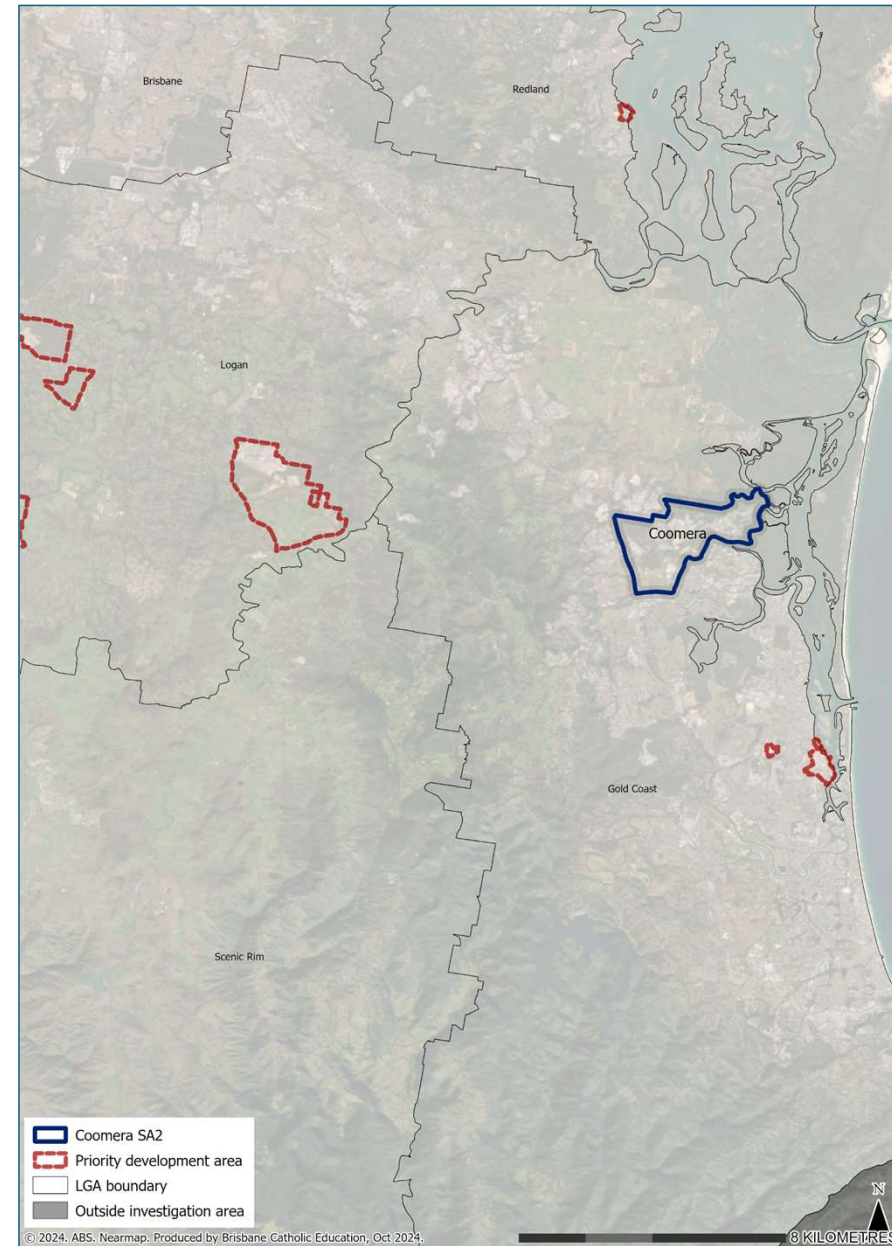
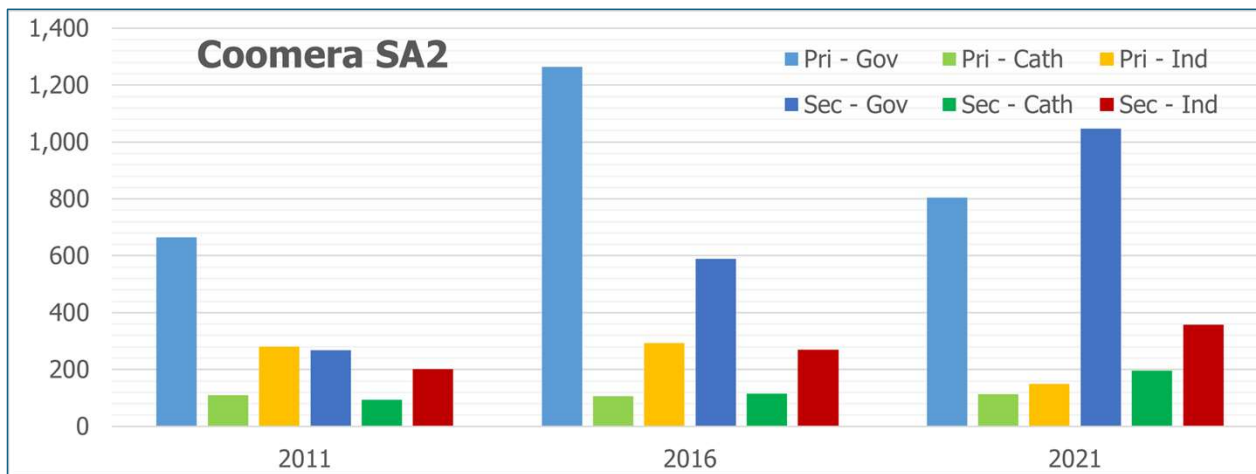
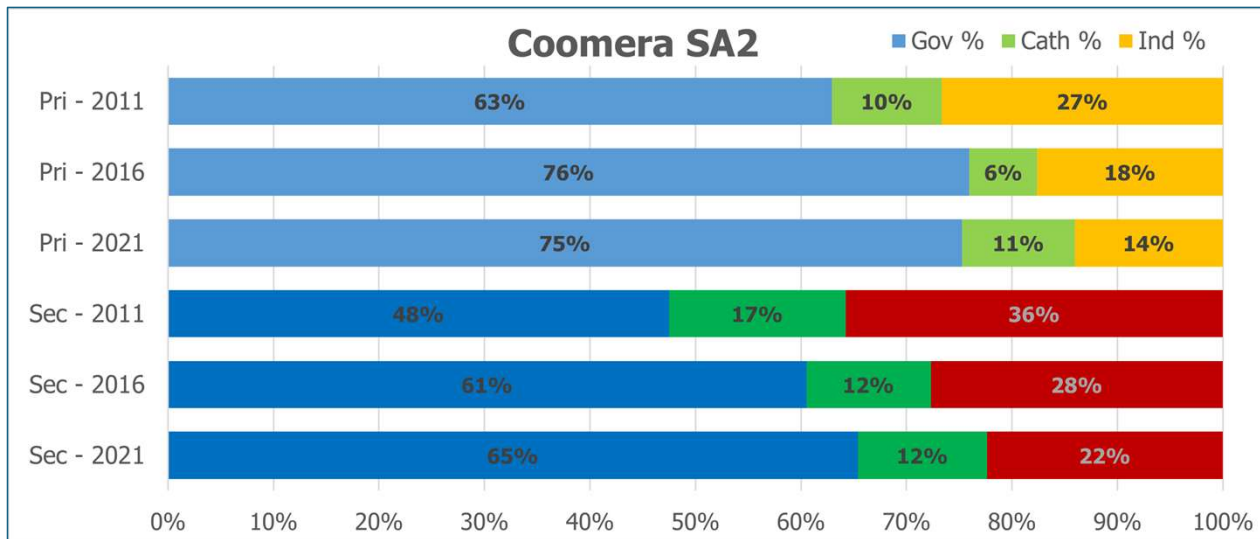
Enrolment growth by Local Government Area - 2020-24



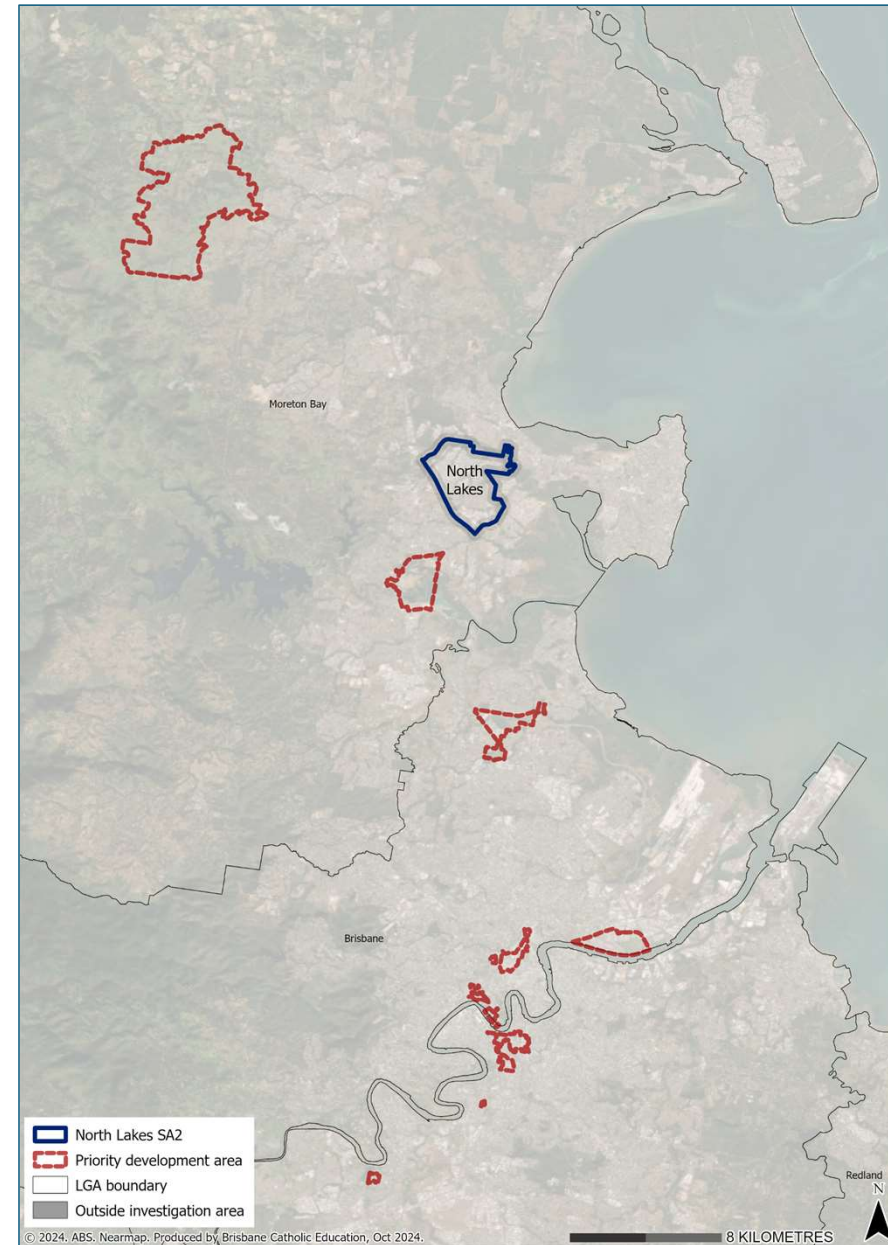
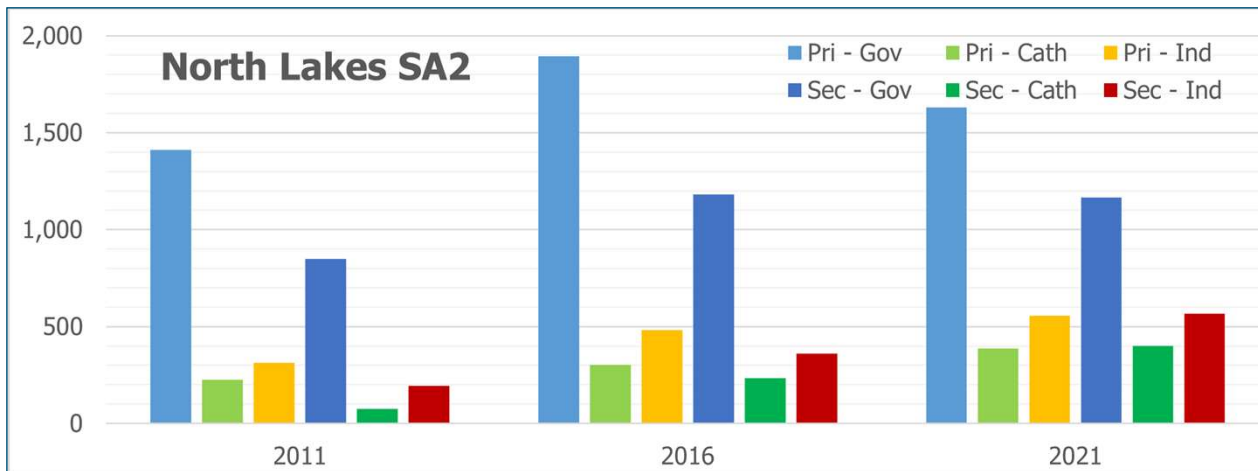
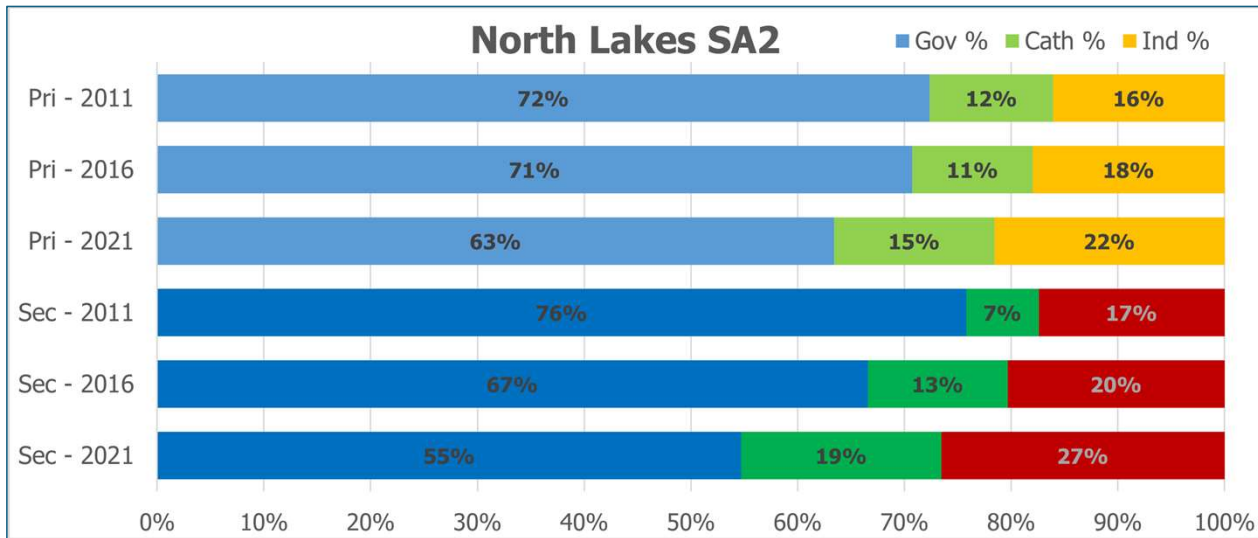
Key growth area – Yarrabilba



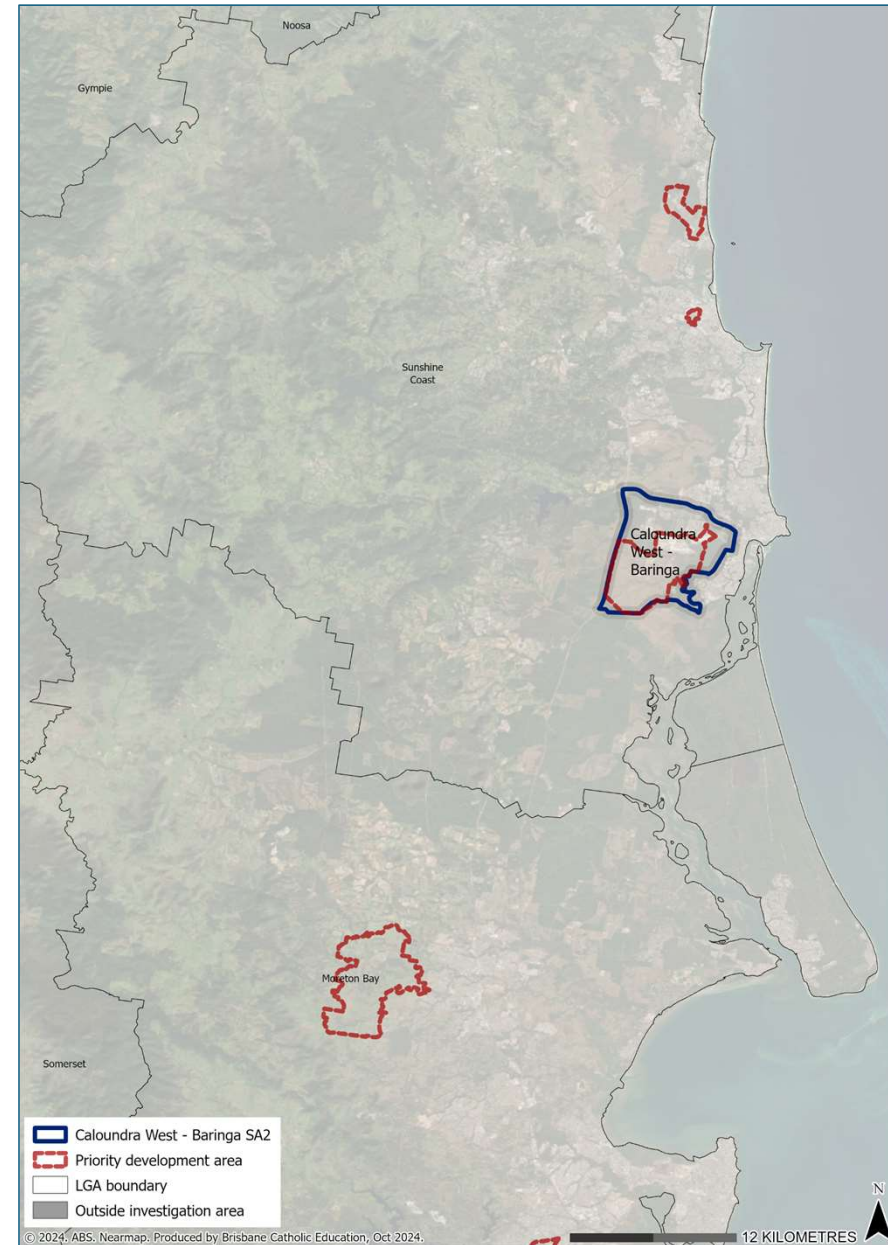
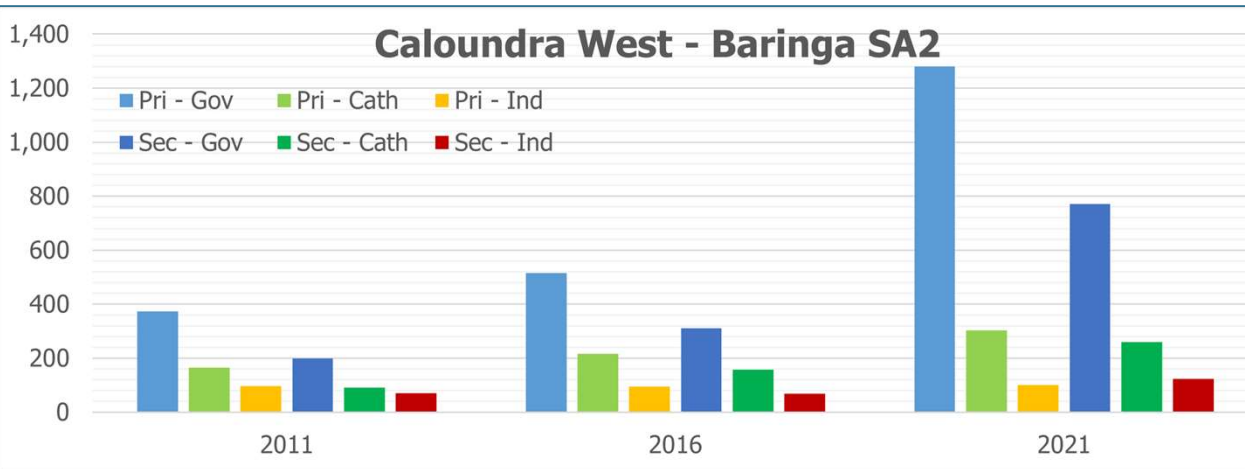
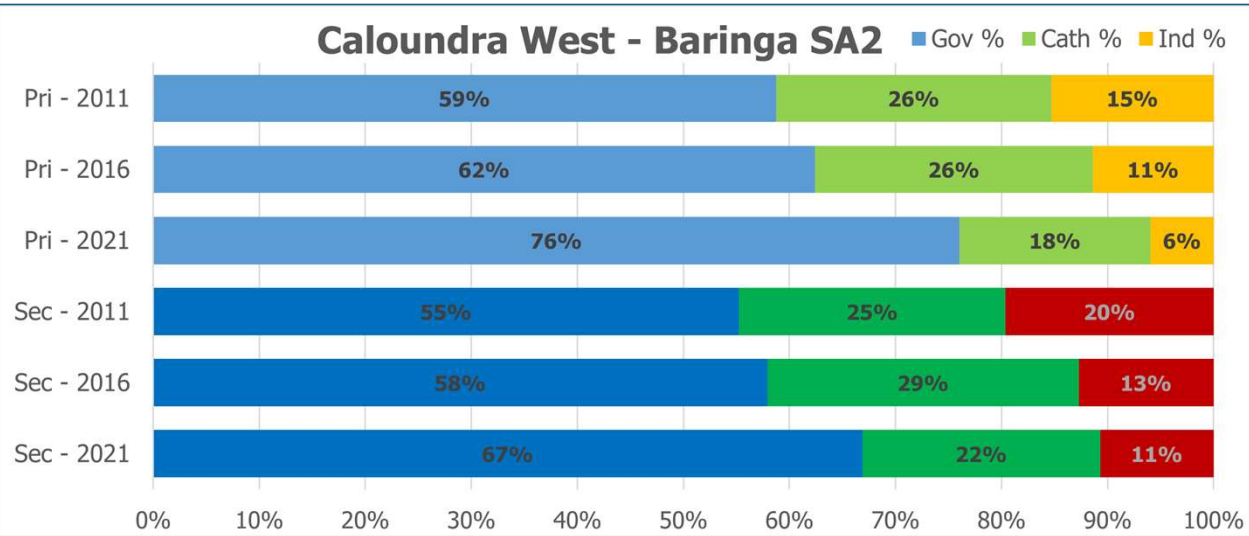
Key growth area – Coomera



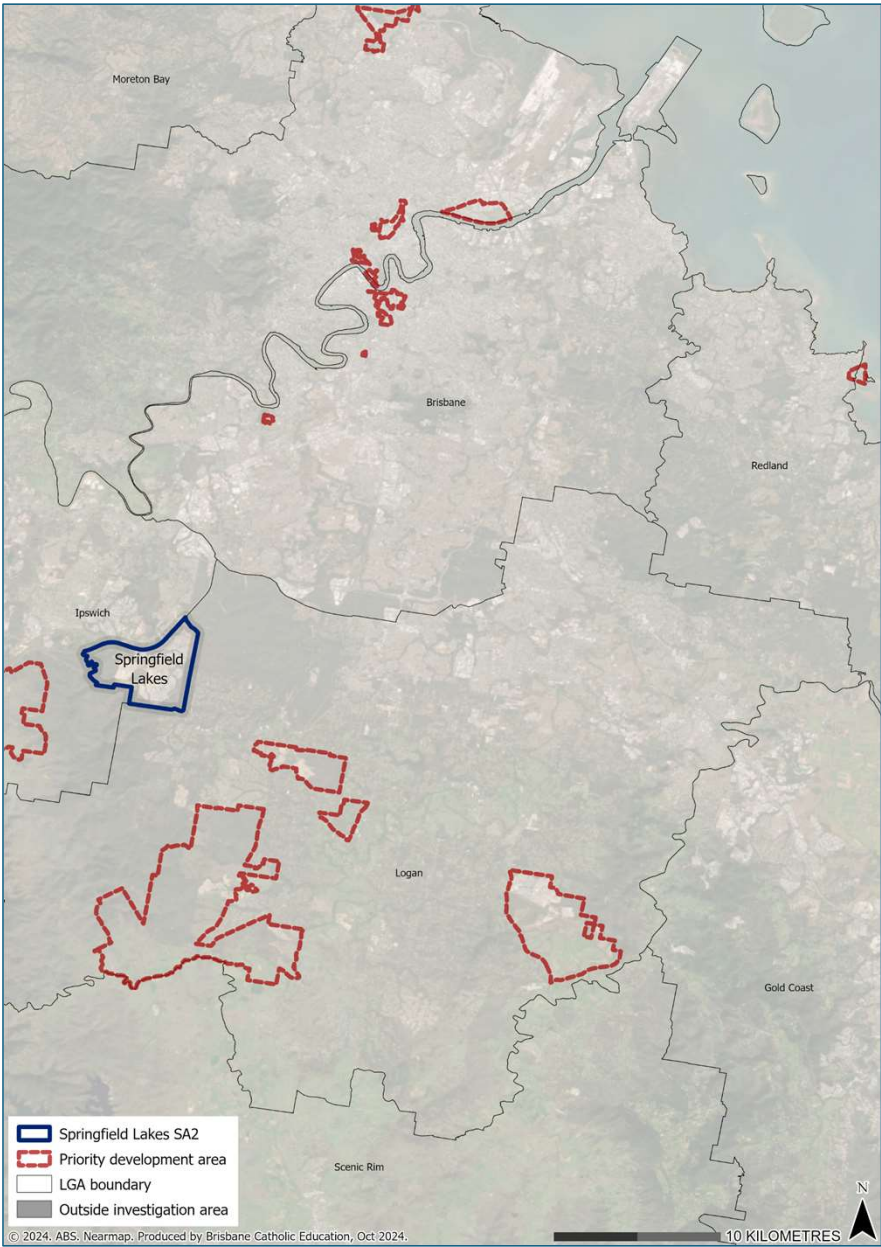
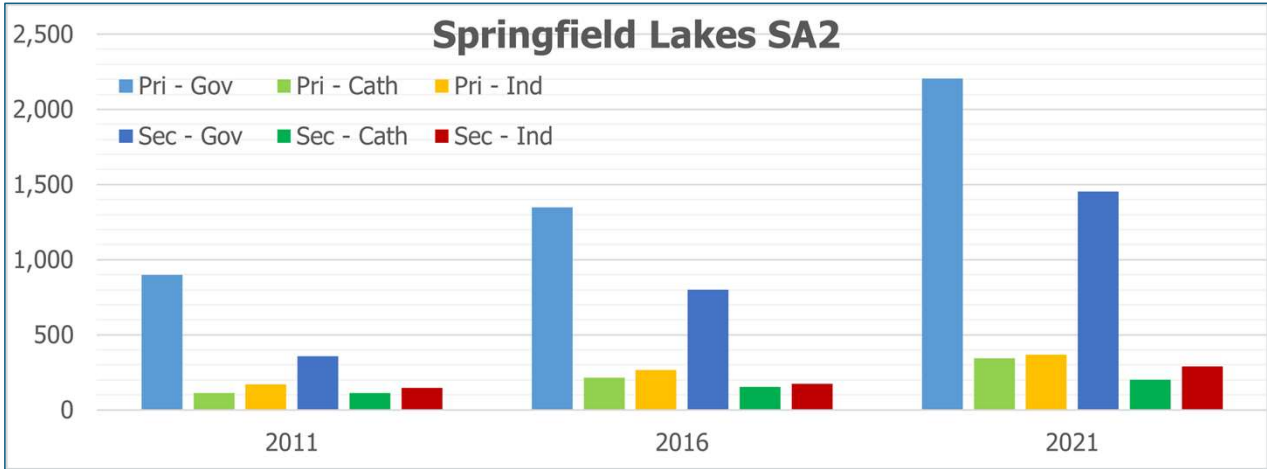
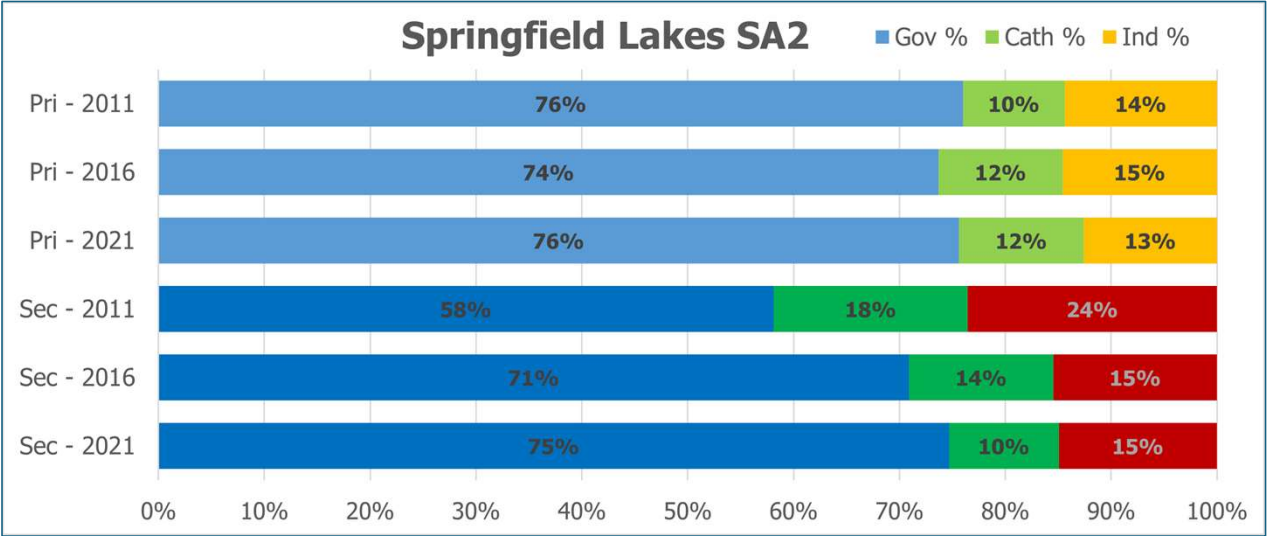
Key growth area – North Lakes



Key growth area – Caloundra West - Baringa



Key growth area – Springfield Lakes



What next?

- Likely to see softer enrolment growth continue in the short term at least with continuing lower numbers of births
- Need to closely monitor other trends pushing enrolments down – retention rates and home education
- New and more established growth areas will continue to drive the need for new schools and expanded schools, even as other areas see decline