

Newman Catholic College

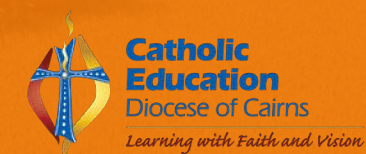


STAGEONE Schematic Design Report

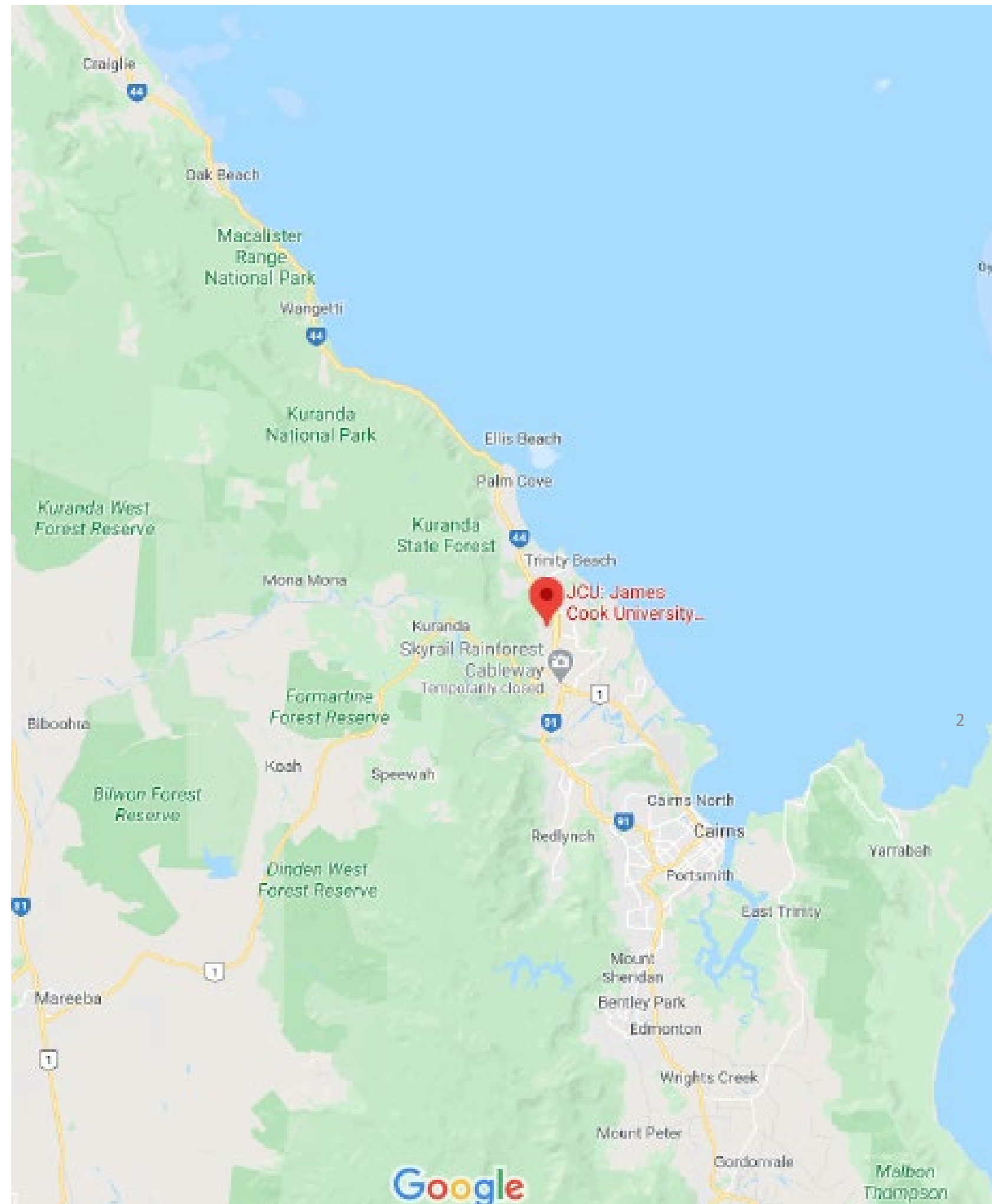
EAC Presentation

14.08.20
Revision C

CES-24



Location

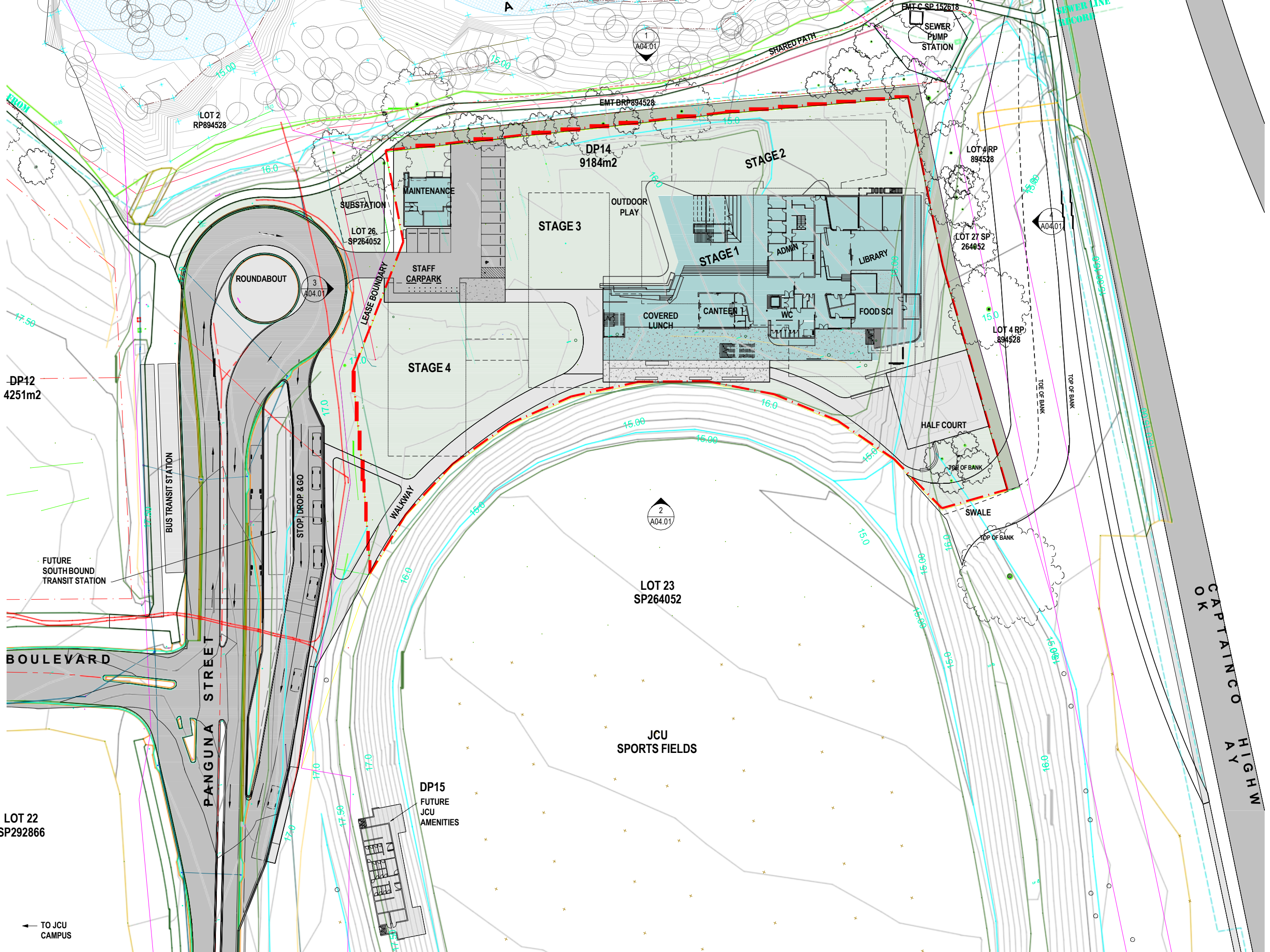




Newman Catholic College JCU Campus



- 1 JCU Library
- 2 Health and Tropical Research Precinct
- 3 Administration Hub
- 4 Dentistry
- 5 Cairns Institute
- 6 Innovation Centre
- 7 Carparking
- 8 Student Accommodation
- 9 Student Services
- 10 DP14 Newman Catholic College





NEWMAN
CATHOLIC COLLEGE







Newman Catholic College

Fitout Design Exemplars



Botanic High School Adelaide Tiered Seating



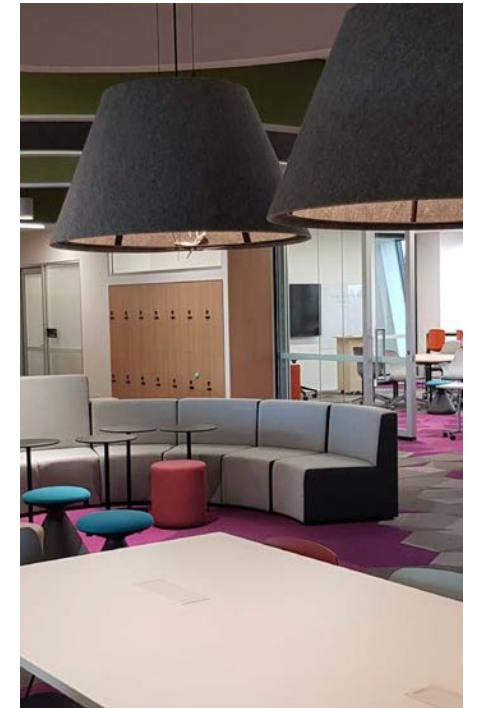
Methodist Ladies' College, Melbourne



Botanic High School Adelaide Study Pod



Prahran State High School, Melbourne GLA



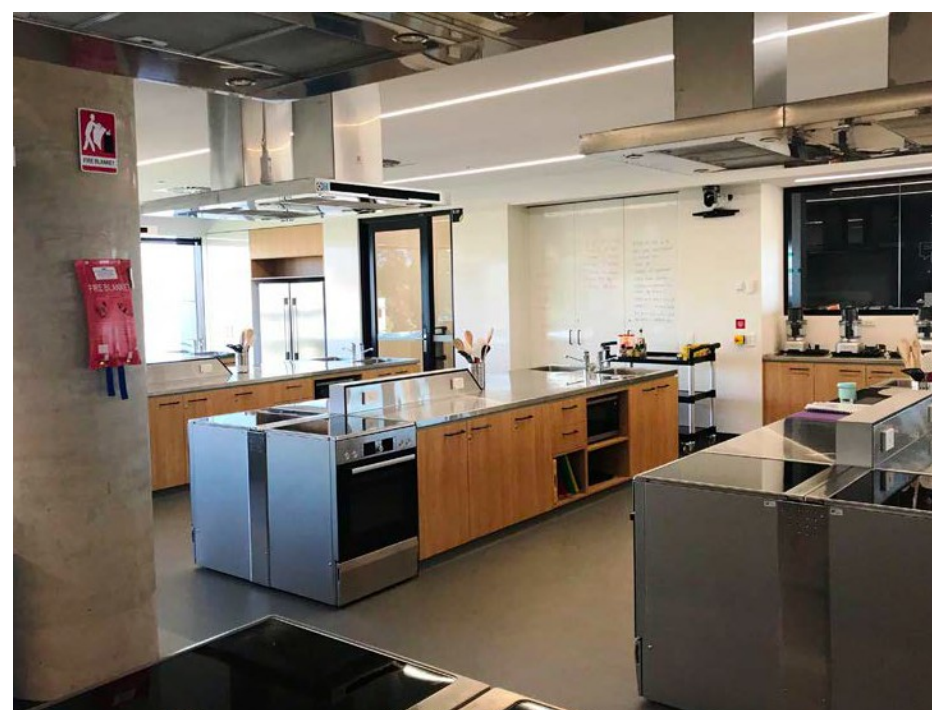
Methodist Ladies' College Creative Breakout Area



Prahran State High School Performance Arts Space



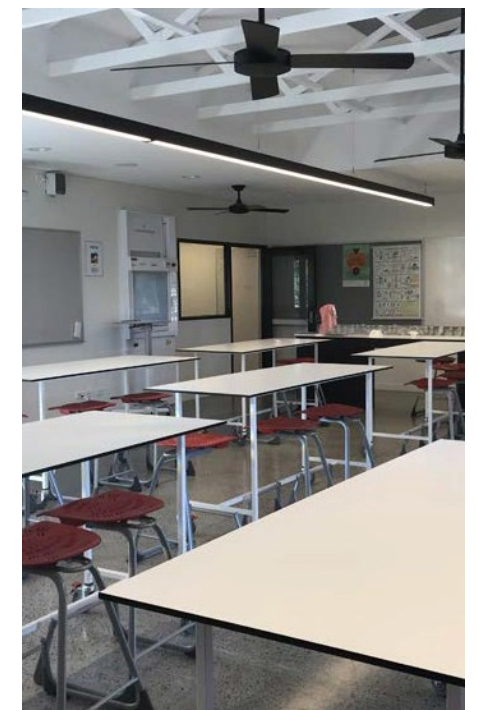
Prahran State High School Tiered Seating



Prahran State High School Food Technology



Textiles Lab



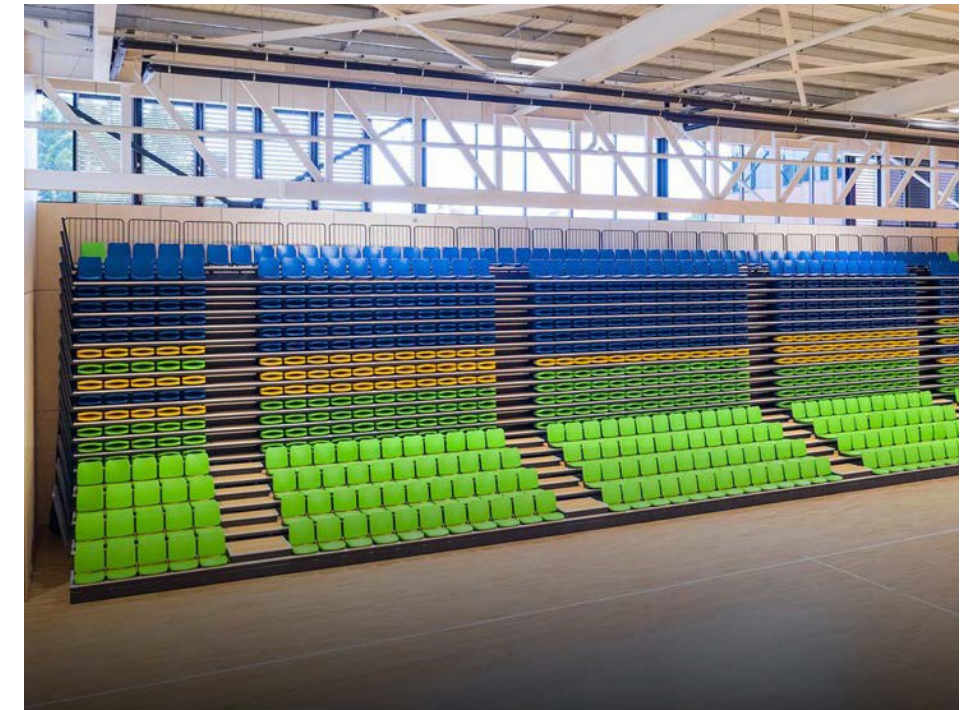
St Joseph's Coomera - Science / GLA



St Mary's College, Cairns Breakout Space



Makers Lab



Retractable Seating



Electronics Lab



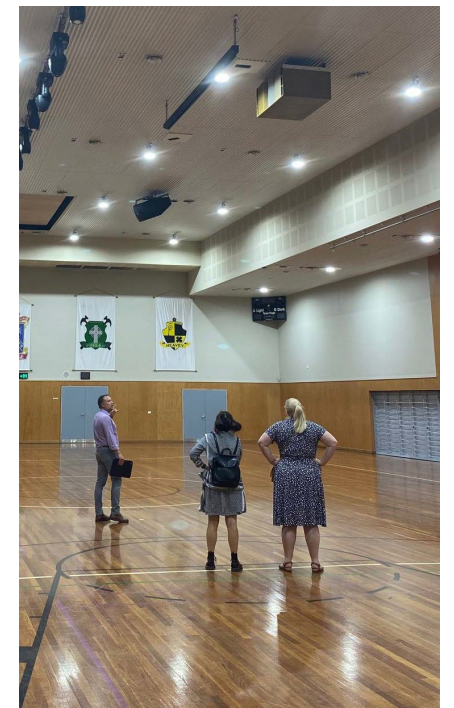
Makers Lab

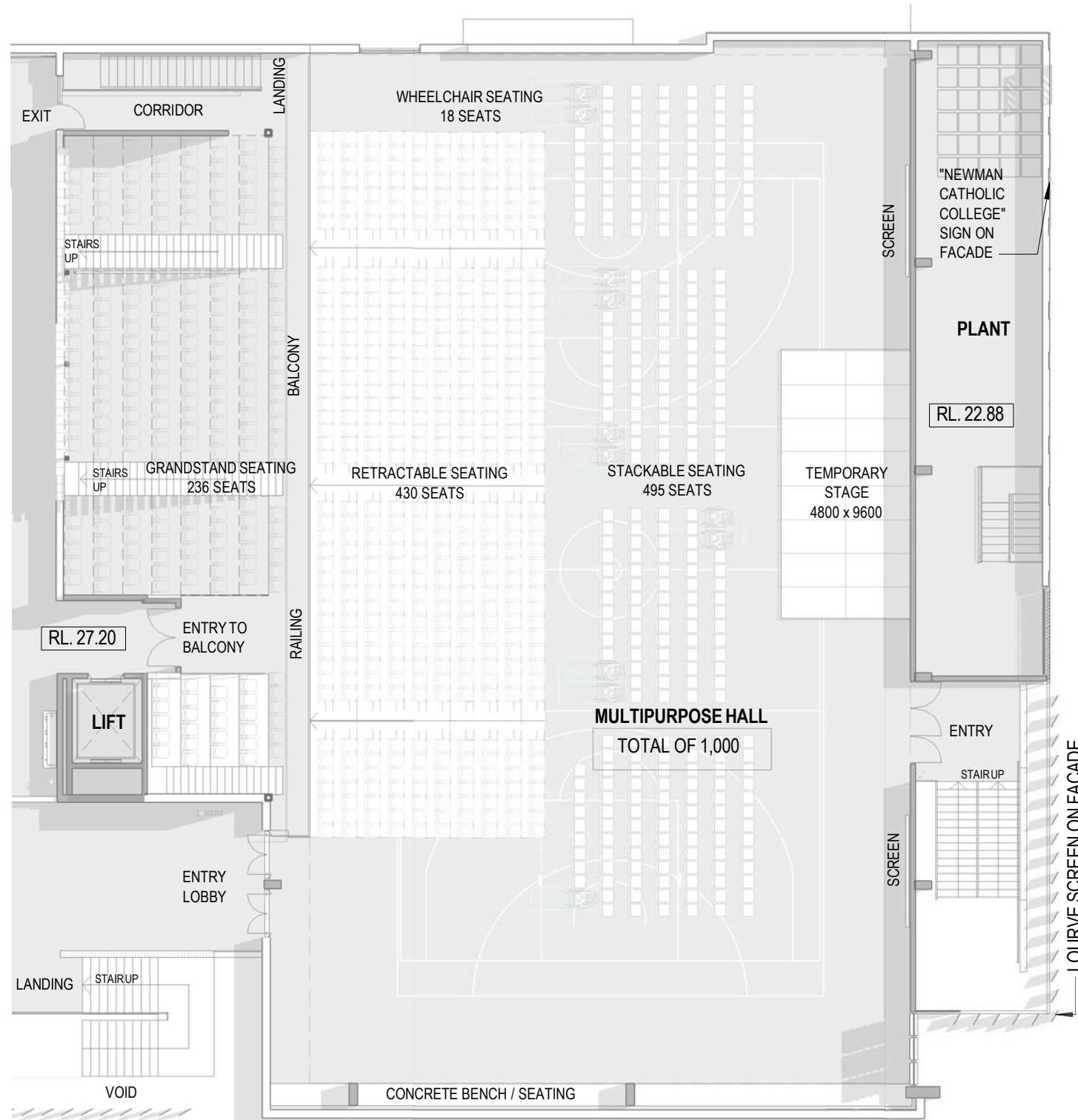


Creative Breakout Area



Saint Augustine's Lennon Hall - Cairns

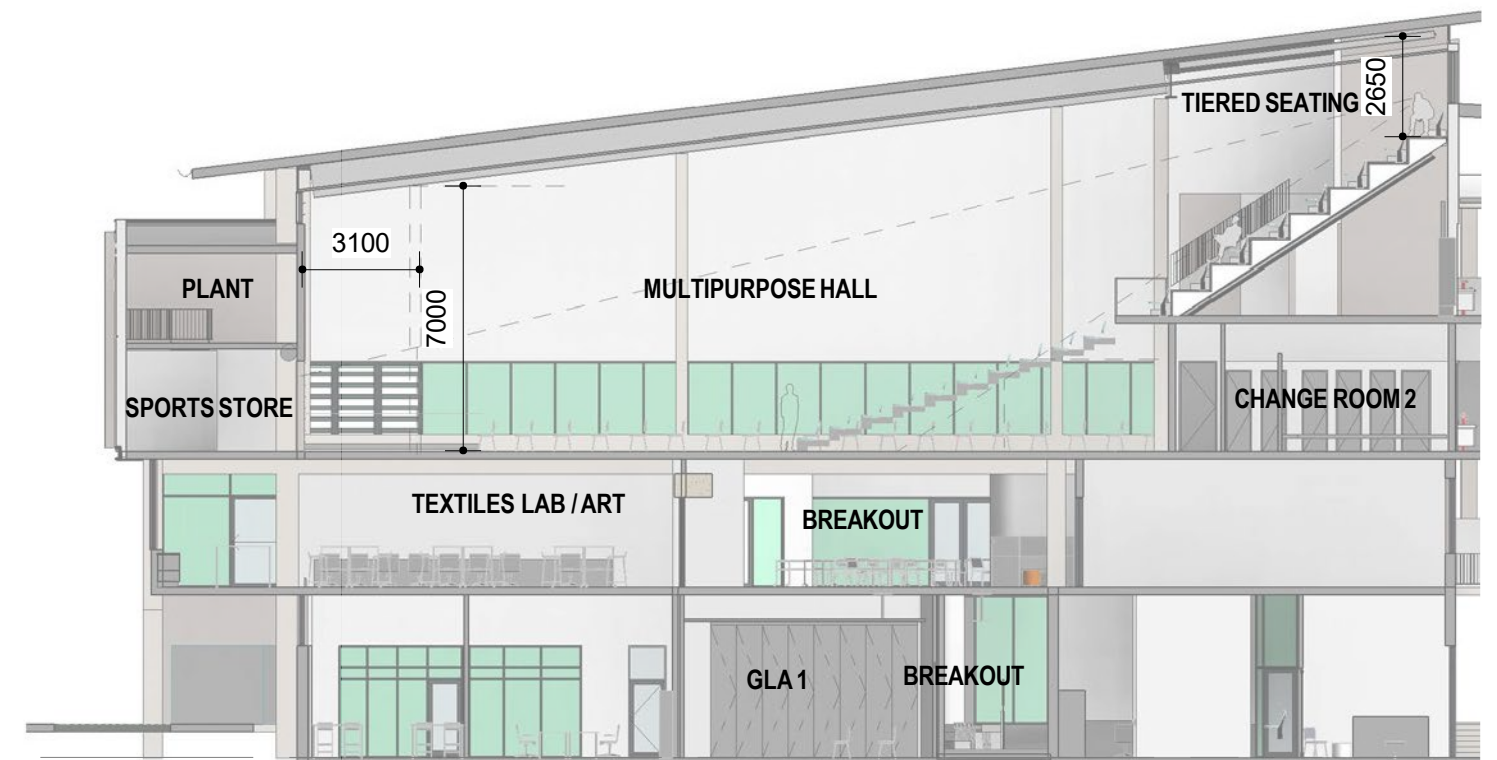




Multipurpose Court Plan Extra Seating

Multi-purpose Hall

Amenities, change rooms, gymnasium and Kinesiology Lab are accessible from the sports courts. Improving the amenity and usability of the space is a fixed tiered seating area/ spectator stand for 235 people above these amenities and retractable seating for 430 at court level adjacent to the amenities. An area for 500 stackable seats accommodates over 1000 people when configured in the horizontal mode. Furthermore, the Multi-purpose Hall can accommodate an extra 200 seats, bringing its capacity up to 1200 people.



Multipurpose Court Section



LEGEND

- Stage 1
- Stage 2
- Stage 3
- Stage 4





- LEGEND
- Stage 1
 - Stage 2
 - Stage 3
 - Stage 4





LEGEND

- Stage 1
- Stage 2
- Stage 3
- Stage 4





LEGEND

- Stage 1
- Stage 2
- Stage 3
- Stage 4



TIMELINE

- JCU and EQ had discussed a secondary college on JCU campus for many years
- December 2018 – Initial discussions between Catholic Education Cairns & JCU commenced
- February 2019 - MOU signed
- November 2019 - Proposal to Lease college site signed
- July 2020 - Formal Lease signed – 50+10+10 year term
- March 2020 – Grant funding application submitted
- August 2020 – Successful grant funding announced by Minister
- October 2020 – Construction will commence
- December 2021 – Stage 1 construction complete
- January 2022 – First students Year 7 commence

BENEFITS OF CO-LOCATION WITH JCU

PHYSICAL & FINANCIAL

- COST SAVINGS
 - No initial capital outlay for land purchase – annual rent v significant site purchase
 - No capital cost to establish sports oval - use of existing JCU sports oval under licence
 - Reduced capital cost for establishment of sports facilities associated with oval – change rooms, basketball court, gym
 - Financial contribution to JCU for demolition of existing sports facilities on college site
 - Financial contribution to JCU for car parking but financial benefit as no major car parking to be provided on site
 - Small car park to be provided on secondary college site but we have access to entire JCU parking network – (\$110 pa gives the right to “hunt for a car park”)
- OTHER BENEFITS
 - Existing pathway access network servicing university for bikes and pedestrians to access college from surrounding suburbs
 - Existing council public bus interchange opposite secondary college site servicing university – access from anywhere in greater Cairns area to this site
 - JCU has Ministerial Designation for town planning purposes which has made the “DA” process quite simple
 - JCU had a secondary college use in their master plan tied to the Ministerial Designation

BENEFITS OF CO-LOCATION WITH JCU

EDUCATIONAL

- Access to JCU university quality facilities – not on a time tabled basis but as required
 - Science labs
 - Resource centre
 - Internet of Things
 - Lecture theatres
- Access to “public” facilities including:
 - Newly completed Ideas Lab providing state of the art learning environments
 - Cairns Innovation Centre lecture theatres and meeting spaces
- University Level courses available in Year 12 of secondary
- Physical proximity will be more beneficial for secondary college compared with solely online
- Stronger relationship between JCU and Catholic Education that will benefit all 6 of our additional secondary colleges in the Diocese
- JCU Education Faculty has access to our secondary college for teacher training and collaboration
- Newman Catholic College will deliver an increased number of entry level university students to JCU