

Department of Education

Strategic Plan | 2019–2023



Creative, connected, engaged

We are Advancing Queensland’s Priorities by giving all children a great start, engaging young people in learning, and creating safe and inclusive workplaces and communities.

Acknowledgement of Country

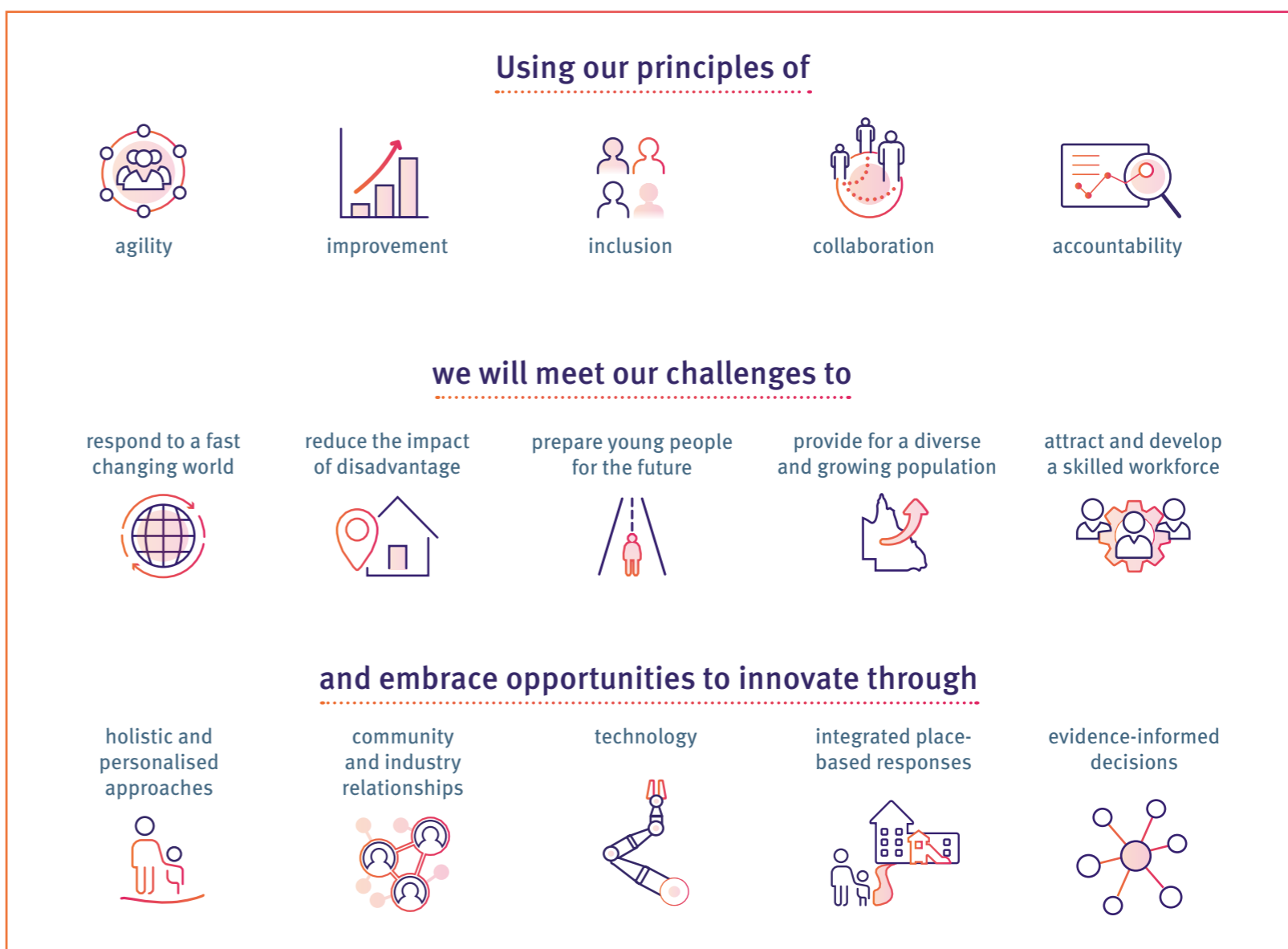
The Department of Education acknowledges the Traditional Owners of the lands from across Queensland and pays respect to the Elders — past and present — for they hold the memories, traditions, the culture and hopes of Aboriginal and Torres Strait Islander peoples across the state.

A better understanding and respect for Aboriginal and Torres Strait Islander cultures develops an enriched appreciation of Australia’s cultural heritage and can lead to reconciliation. This is essential to the maturity of Australia as a nation and fundamental to the development of an Australian identity.

We are committed to delivering aspirational, educational, economic and social outcomes for Aboriginal and Torres Strait Islander peoples.

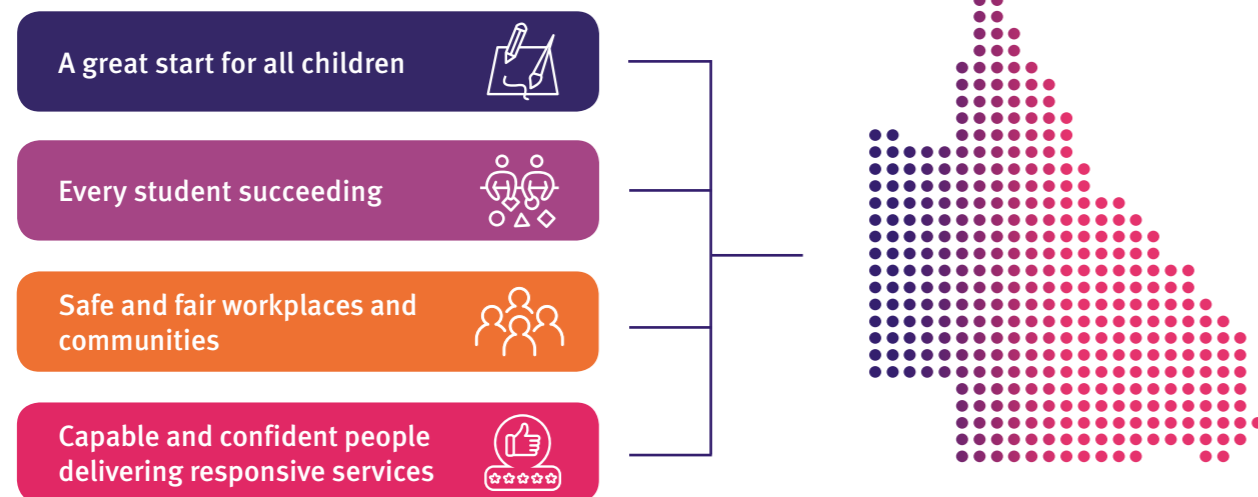
We all have a role in creating workplaces, schools and communities that value, support, and uphold the rights of Aboriginal and Torres Strait Islander peoples.

For more information, see our [Commitment Statement](#).



Strategic Plan | 2019–2023

Our objectives



Our strategies

- Provide opportunities for every child to access quality kindy in the year before school
- Ensure the quality and safety of early childhood education and care services through effective regulation and workforce strategies
- Nurture the wellbeing of all children and young people, ensuring they are safe, valued and respected
- Engage families to play an active role in their child’s learning and development
- Support culturally responsive learning for Aboriginal and Torres Strait Islander children and young people
- Build resilience for learning to reduce the impact of vulnerability
- Support positive transitions from home to early education, to school, and on to further education, training and employment pathways
- Empower every student to engage in learning and achieve growth each year
- Support schools to continue their improvement journey
- Uphold the rights of Queenslanders to safe and healthy workplaces and communities
- Deliver fair, consistent and effective regulation, and manage Queensland’s industrial framework and public sector bargaining
- Be an employer of choice with a capable and confident workforce
- Support the health, safety and wellbeing of our people in every workplace
- Design and deliver responsive services in collaboration with our stakeholders
- Invest in contemporary infrastructure and information technologies for future-focused learning, teaching and working.

Our plans and initiatives

A great start for all children

- [Advancing Education](#)
- [Early childhood education and care workforce action plan](#)
- [Every Queensland Succeeding Disability Service Plan](#)

Every student succeeding

- [Advancing Education](#)
- [Every student succeeding - State Schools Strategy](#)
- [Every student with disability succeeding](#)
- [Advancing rural and remote education in Queensland state schools](#)
- [Everybody’s Business](#)
- [Re-engaging young Queenslanders in education](#)

Safe and fair workplaces and communities

- [Five year strategic plan for work health and safety in Queensland](#)
- [Electrical Safety Plan for Queensland](#)

Capable and confident people delivering responsive services

- [We All Belong - Inclusion and Diversity Framework](#)
- [Teaching Queensland’s Future](#)
- [Working for Queensland Action Plan](#)
- [Building Future Schools and 2020 Ready](#)
- [Digital Strategy](#)
- [Long-term Financial Plan](#)

Our measures



For more information visit qed.qld.gov.au