

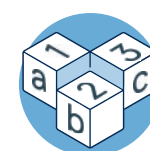
Strategic Plan 2025–29

Providing a world-class early childhood and education system and supporting a vibrant arts and cultural sector for all Queenslanders.

Our objectives



Great people, responsive systems, better outcomes



Every child starting strong



Every student achieving and realising their potential



Vibrant arts and culture across the state

Our contribution to the Government's objectives for the community

We support and contribute to the Government's objectives for the community



Safety where you live

by supporting early intervention to keep young people engaged in learning and strengthening safety in early childhood services and schools.



A plan for Queensland's future

by building the infrastructure needed for a growing population, putting more teachers in safer schools and, preparing young Queenslanders for the future.



A better lifestyle through a stronger economy

by providing access to quality early childhood and education, and investing in arts and culture across the state to deliver outcomes for Queenslanders.

Our opportunities

- Build a skilled and confident workforce through delivery of high-quality capability development opportunities
- Strengthen local decision making within a system of support
- Streamline systems and processes to deliver improvements for staff and better outcomes for Queenslanders
- Invest and work with partners to deliver better services for Queensland
- Leverage emerging technologies to enhance teaching and learning and provide efficient services.

Our challenges

- Ensure the wellbeing and safety of children, students and our workforce
- Strengthen the supply and retention of our diverse workforce
- Keep pace with technological advances and maintain the integrity and security of our information and systems
- Continue to mature our prevention and preparedness for disruptive events
- Respond to the needs of diverse communities and provide sustainable investment for future generations.

In everything we do we consider:

- child and student protection and safety
- workplace health and safety
- information security
- integrity.

[Department of Education Enterprise risks](#)

Our commitment

We promote equity and excellence and Queensland's cultural identity in our commitment to respect, protect and promote human rights.

We are committed to working together to close the gap for Aboriginal students and Torres Strait Islander students. For more information see our [Commitment Statement](#).



Great people, responsive systems, better outcomes.

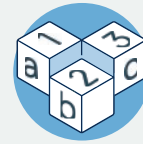
Invest in our people, systems and infrastructure to deliver better outcomes for Queenslanders

Our strategies

- Attract and retain a skilled and contemporary workforce
- Support the health, safety and wellbeing of staff in every workplace
- Reduce red tape and streamline processes and systems
- Provide opportunities for all staff to build professional expertise, capability and skills across their career
- Deliver, renew and maintain sustainable and inclusive infrastructure
- Deliver digital services responsive to new and emerging technology
- Deliver legislative, regulatory and policy reform to strengthen and improve the safety of our early childhood, education and arts systems
- Govern, monitor and evaluate strategic initiatives to assess impact, build an evidence base, and drive ongoing improvement and innovation.

Our measures

- Workplace health and safety
- Staff wellbeing and satisfaction
- Workforce diversity
- Infrastructure investment
- Financial performance



Every child starting strong.

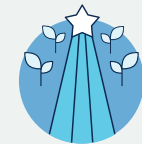
Provide the foundations for children's futures through quality early childhood services

Our strategies

- Deliver proactive and risk-based regulation to support safe, high-quality early years services
- Provide access to kindergarten for all children in the year before school to foster readiness for learning
- Support prevention and early intervention to help families and children to participate in early childhood education
- Support culturally responsive early childhood services by working with Aboriginal and Torres Strait Islander peoples and the community-controlled sector
- Ensure accessible and inclusive service delivery responsive to the needs of children with disability
- Support children to positively transition into early childhood education and school
- Grow the capability of the early childhood sector to deliver a skilled and culturally capable workforce.

Our measures

- Wellbeing and development prior to school
- Kindy participation
- Quality of early years services
- Transitions



Every student achieving and realising their potential.

Prepare every student for a bright future by equipping them with the knowledge and skills they need

Our strategies

- Deliver quality teaching and learning
- Improve outcomes in English and mathematics as the foundations for learning
- Strengthen supports and responses to deliver safe and disciplined learning environments
- Boost engagement and transitions across all phases of learning to lift attendance and educational outcomes
- Enhance teaching and learning through digital innovation and virtual learning opportunities
- Support students with disability to engage in learning and achieve educational outcomes
- Improve educational outcomes for Aboriginal and Torres Strait Islander students
- Work with partners to support students to remain engaged or re-engage in education, training or employment
- Work with partners to strengthen meaningful post-school pathways in education, training or employment.

Our measures

- Learning outcomes
- Attendance and engagement
- Student retention
- Post-school destinations
- Parent and student satisfaction



Vibrant arts and culture across the state.

Invest in arts and culture to deliver social, cultural and economic outcomes for Queensland

Our strategies

- Deliver the key priorities of Grow 2022–2026
- Drive arts and culture-led economic outcomes across the state ahead of Brisbane 2032 and beyond
- Increase access to arts and culture through delivery of high-quality cultural infrastructure
- Support arts and cultural projects, programs and experiences in regional and remote communities to grow tourism and local employment
- Grow the capability of the arts and cultural sectors to deliver a skilled and culturally capable workforce.

Our measures

- Use of arts-owned and/or managed arts and cultural facilities
- Customer satisfaction
- Government funding