

2021

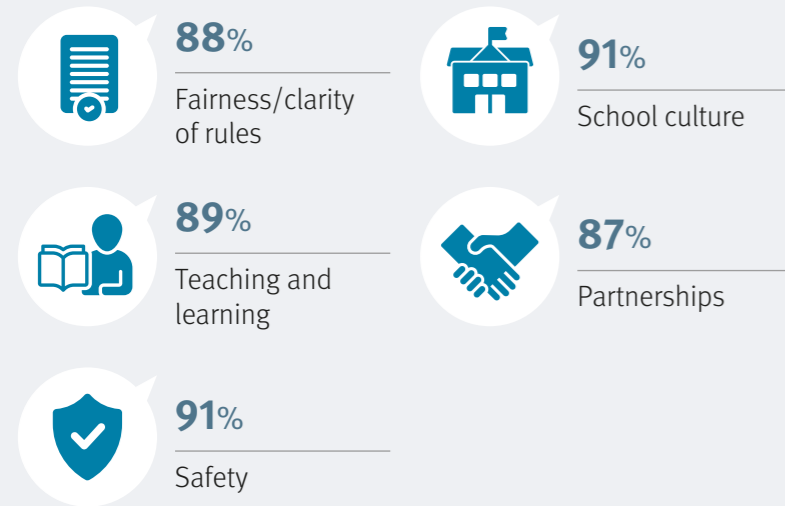
Parents and caregivers

# School Opinion Survey Queensland

In Term 3, 2021, the Department of Education launched the revised School Opinion Survey, inviting students, parents and staff to have their say about schooling and learning at their school.

Survey results help schools to improve. They provide an understanding of what they are doing well, and indicate areas which may require additional attention.

## How we are doing in all areas



## Fairness/clarity of rules



- 93%** The expectations and rules are clear at this school
- 88%** Teachers at this school treat students fairly
- 82%** Student behaviour is well managed at this school

## Teaching and learning



- 96%** Teachers at this school expect my child to do his or her best
- 87%** I understand how my child is assessed at this school
- 89%** Teachers at this school provide my child with useful feedback about his or her school work
- 87%** My child is interested in their school work
- 89%** My child is making good progress at this school
- 86%** My child's learning needs are being met at this school

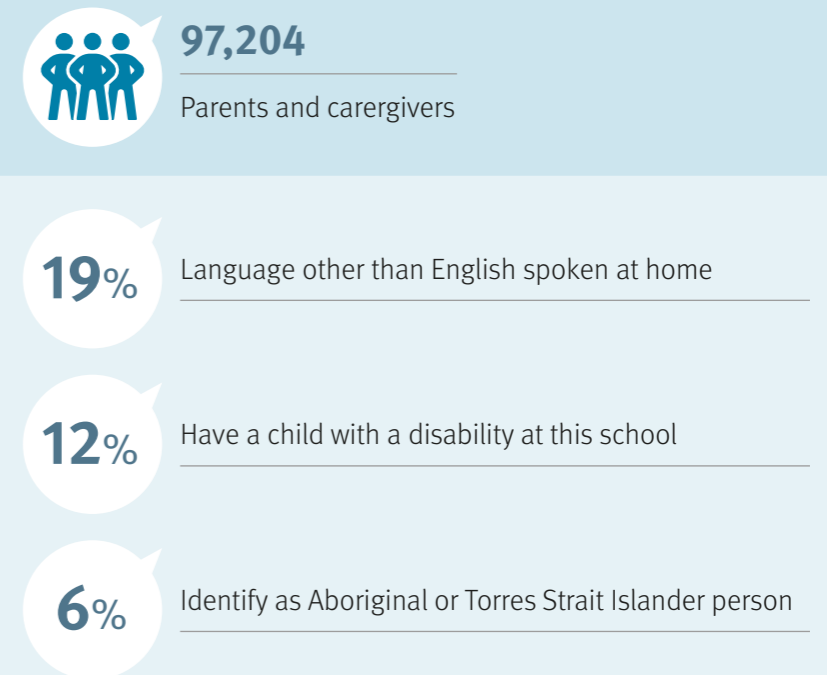
## School culture

- 91%** My child likes being at this school
- 89%** Teachers at this school motivate my child to learn
- 90%** This school has a strong sense of community
- 94%** This school celebrates student achievements
- 89%** This school looks for ways to improve
- 92%** This is a good school
- 89%** This school fosters respectful relationships among all students
- 91%** This school treats students equally, regardless of gender



Parents and caregivers were asked general questions about their child's school and learning experiences to assist schools identify areas for future improvement.

## Who completed the survey



## Partnerships

- 89%** This school works with me to support my child's learning
- 93%** I can talk to my child's teachers about my concerns
- 91%** Staff at this school are responsive to my enquiries
- 87%** This school keeps me well informed
- 93%** Staff at this school are approachable
- 78%** This school asks for my input
- 81%** This school takes parents' opinions seriously



## General

**94%** The school is well maintained

For more information email [SchoolOpinionSurvey@qed.qld.gov.au](mailto:SchoolOpinionSurvey@qed.qld.gov.au)

## Safety

-  **90%** My child feels safe at this school
-  **91%** Teachers at this school are interested in my child's wellbeing

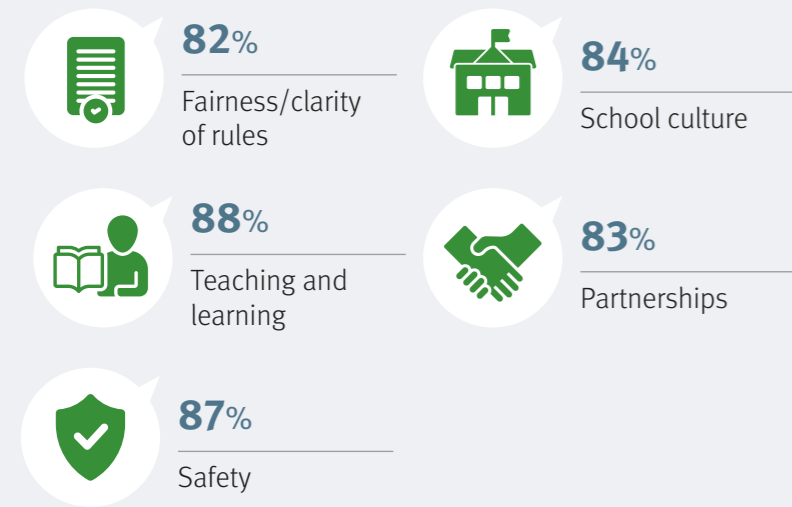
This survey was emailed to all families where an email address was available. It was open between 15 July 2021 and 6 August 2021. Caution should be used when comparing 2021 data with survey data from previous years, as survey content and methodology have changed substantially in 2021.

# 2021 Students School Opinion Survey Queensland

In Term 3, 2021, the Department of Education launched the revised School Opinion Survey, inviting students, parents and staff to have their say about schooling and learning at their school.

Survey results help schools to improve. They provide an understanding of what they are doing well, and indicate areas which may require additional attention.

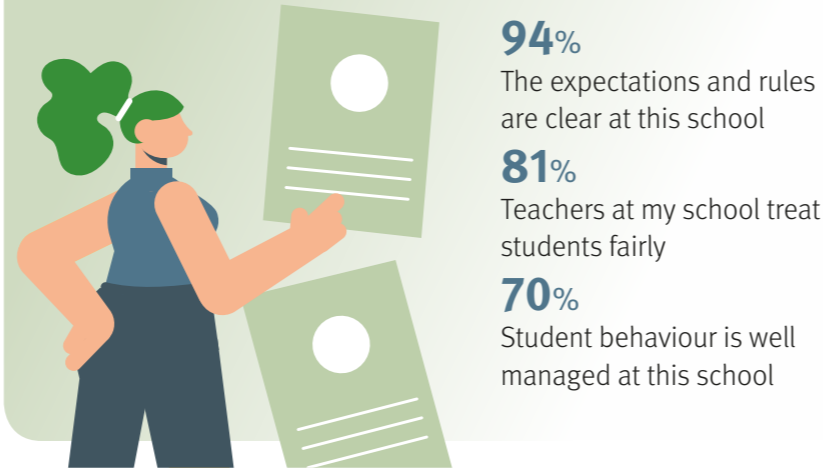
## How we are doing in all areas



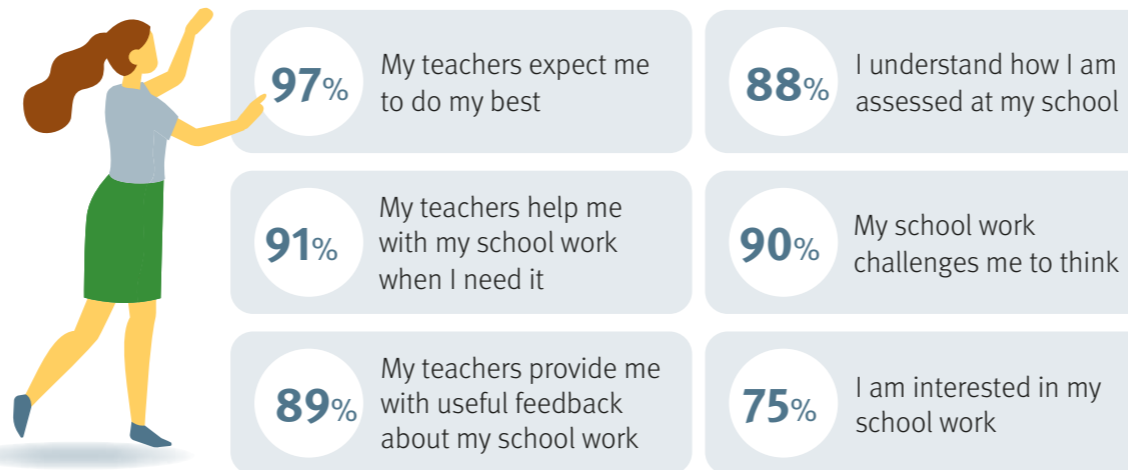
## General



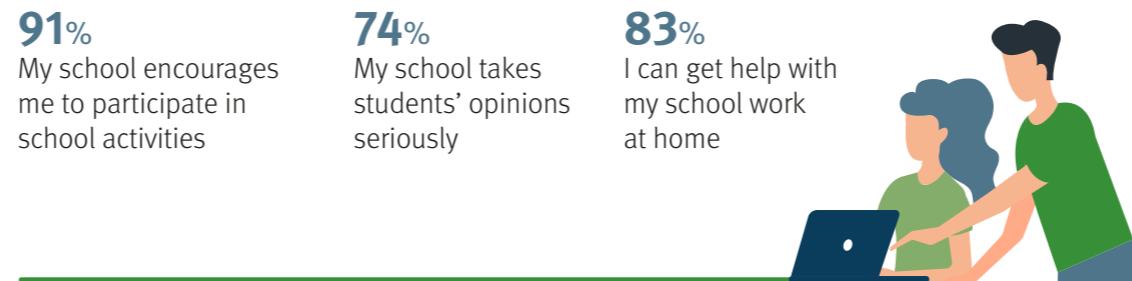
## Fairness/clarity of rules



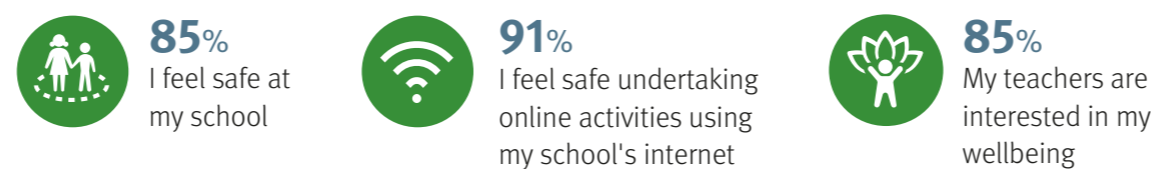
## Teaching and learning



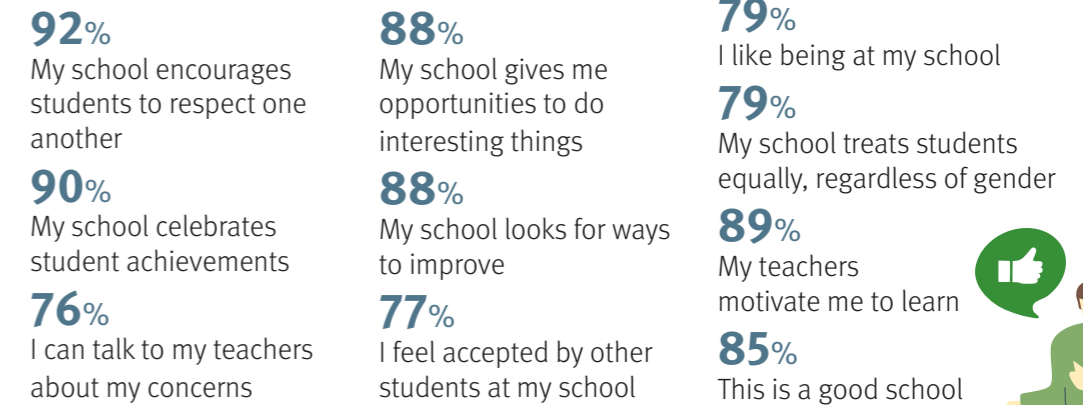
## Partnerships



## Safety

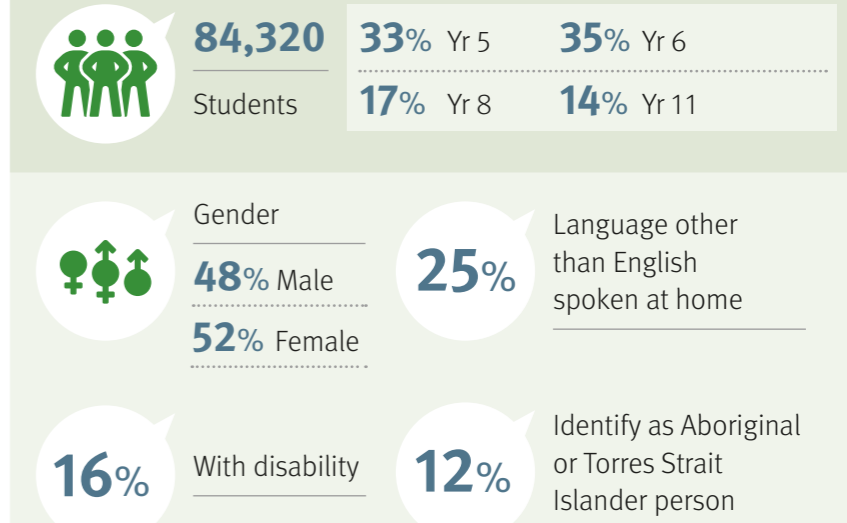


## School culture



Students were asked general questions about their school and learning experiences to assist schools identify areas for future improvement.

## Who completed the survey



\*totals may not equal 100% as demographic questions are optional

This survey was emailed to all students in year levels 5, 6, 8, and 11. It was open between 15 July 2021 and 6 August 2021. Caution should be used when comparing 2021 data with survey data from previous years, as survey content and methodology have changed substantially in 2021.

2021

Special School Students

# School Opinion Survey Queensland

In Term 3, 2021, the Department of Education launched the revised School Opinion Survey, inviting students, parents and staff to have their say about schooling and learning at their school.

Survey results help schools to improve. They provide an understanding of what they are doing well, and indicate areas which may require additional attention.



92% I like being at my school

94% I can access computers and other technologies at my school for learning

96% I feel safe at my school

98% My teachers encourage me to do my best

94% Teachers at my school treat students fairly

97% My teachers care about me

96% My school gives me opportunities to do interesting things

97% My school encourages me to be involved in school activities

97% I am getting a good education at my school


94% This is a good school

Students were asked general questions about their school and learning experiences to assist schools identify areas for future improvement.



## Who completed the survey

 239  
Students

 Gender  
63% Male  
32% Female

*\*totals may not equal 100% as demographic questions are optional*

*This survey was made available to students in year levels 4 to 12, between 15 July 2021 and 6 August 2021.*



For more information email [SchoolOpinionSurvey@qed.qld.gov.au](mailto:SchoolOpinionSurvey@qed.qld.gov.au)

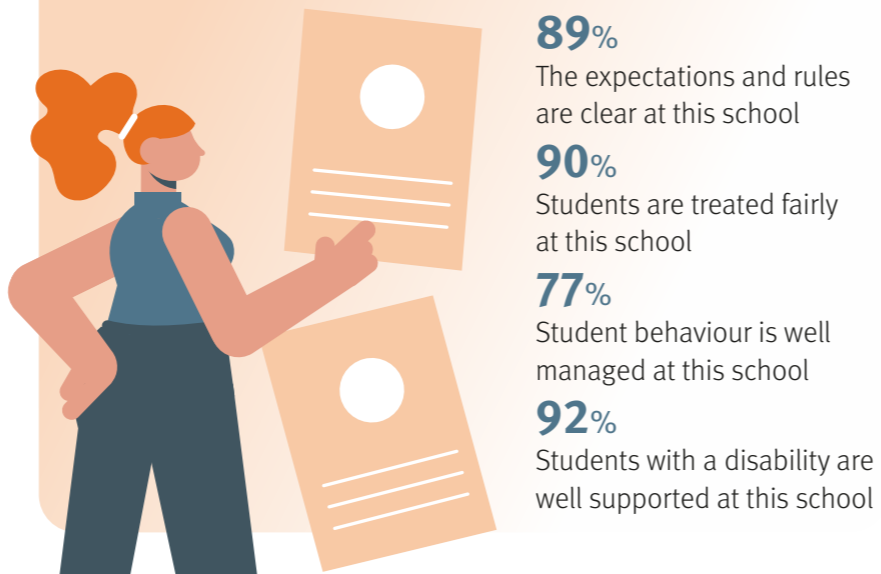
2021

Staff

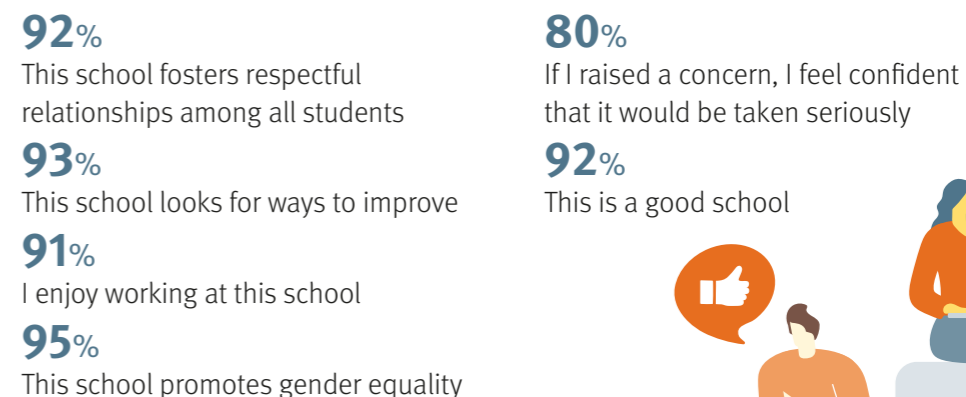
# School Opinion Survey Queensland

In Term 3, 2021, the Department of Education launched the revised School Opinion Survey, inviting students, parents and staff to have their say about schooling and learning at their school.

## Fairness/clarity of rules



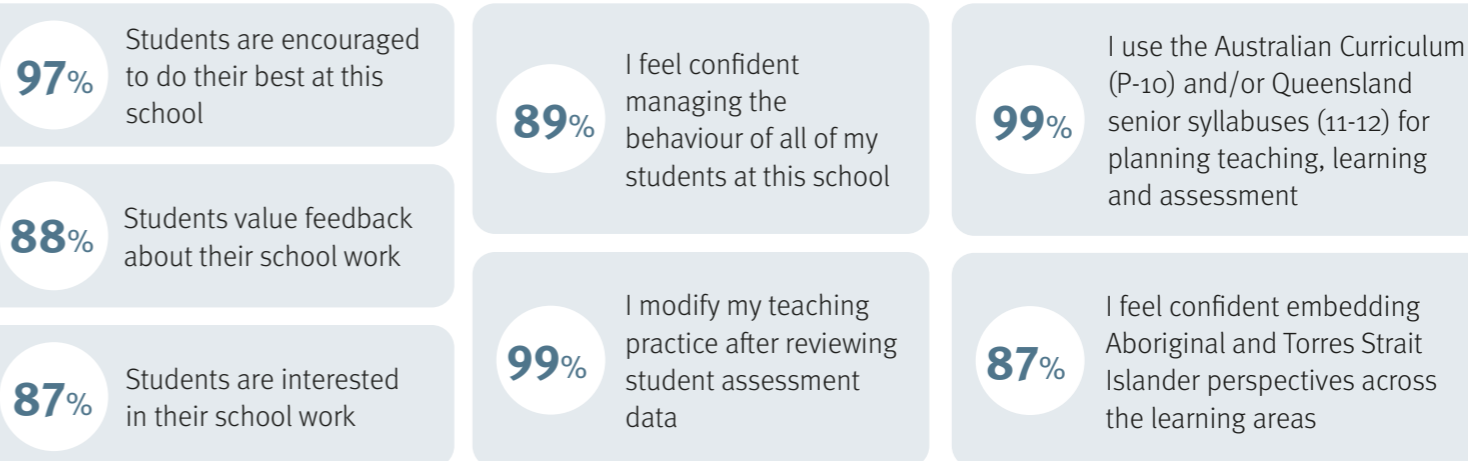
## School culture



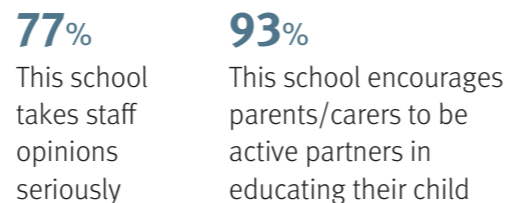
## How we are doing in all areas



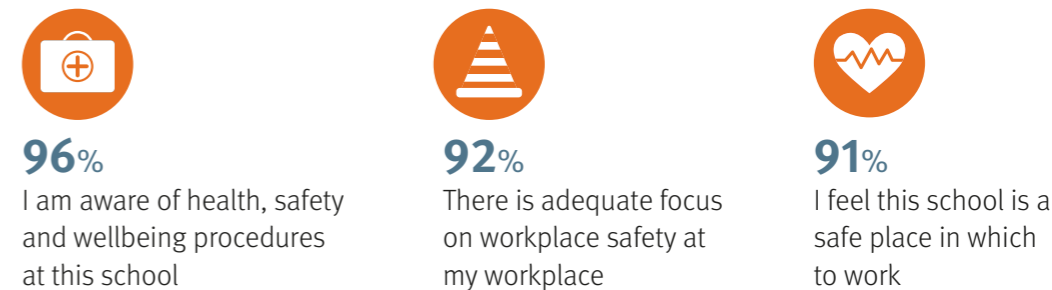
## Teaching and learning



## Partnerships



## Safety





2021

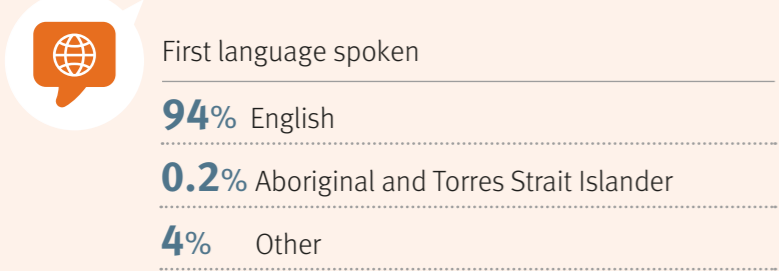
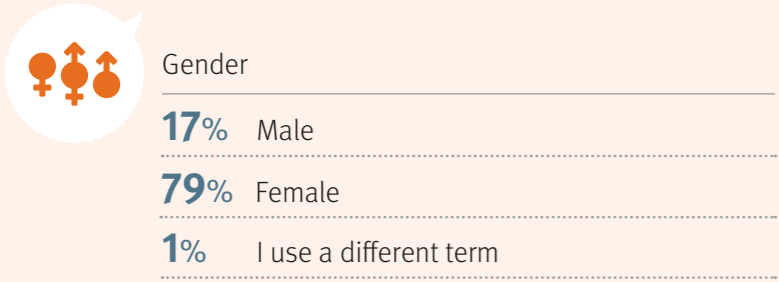
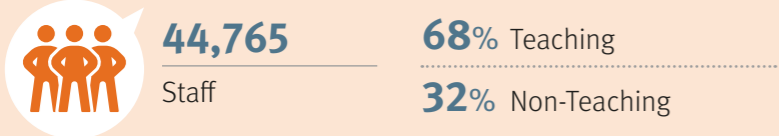
Staff

# School Opinion Survey Queensland

Staff were asked general questions about their school and teaching environment to assist schools identify areas for future improvement.



## Who completed the survey



\*totals may not equal 100% as demographic questions are optional

This survey was emailed to school staff and was open between 15 July 2021 and 6 August 2021. Caution should be used when comparing 2021 data with survey data from previous years, as survey content and methodology have changed substantially in 2021.

## Staff development

- 82%** I receive useful feedback about my work at this school
- 86%** I have access to relevant professional development
- 85%** This school gives me opportunities to do interesting things
- 88%** This school encourages coaching and mentoring activities

## Staff wellbeing

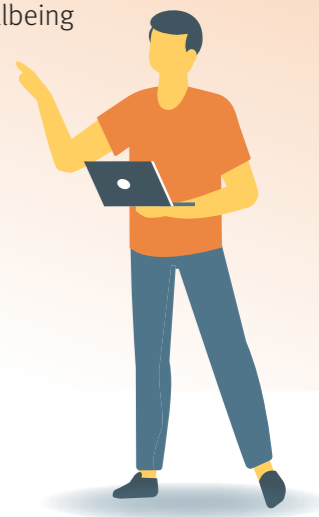
- 79%** Staff are well supported at this school
- 78%** The wellbeing of employees is a priority for this school
- 73%** I feel that staff morale is positive at this school
- 77%** I am supported to manage the pressures of my workload
- 75%** Staff are treated fairly and consistently at this school

## Workplace culture

- 84%** This school keeps me well informed about things that are important to my work
- 92%** This school has an inclusive culture where diversity is valued and respected
- 79%** This school's culture supports people to achieve a good work-life balance
- 82%** This school offers flexible work arrangements
- 73%** I am confident that poor performance will be appropriately addressed in this school
- 76%** Recruitment and promotion decisions in this school are fair
- 79%** This school appropriately supports staff following an occupational violence/aggressive incident
- 13%** Have you been subjected to bullying at this school?
- 1%** Have you been subjected to sexual harassment at this school?

## Departmental support

- 92%** I feel well supported by the department to lead my school
- 85%** I feel well supported by the department to manage my health and wellbeing



## General

- 88%** Information and communication technology issues at this school are resolved promptly
- 89%** This school is well maintained
- 84%** This school is well managed
- 83%** The school leadership team model the behaviours expected of all employees

For more information email [SchoolOpinionSurvey@qed.qld.gov.au](mailto:SchoolOpinionSurvey@qed.qld.gov.au)