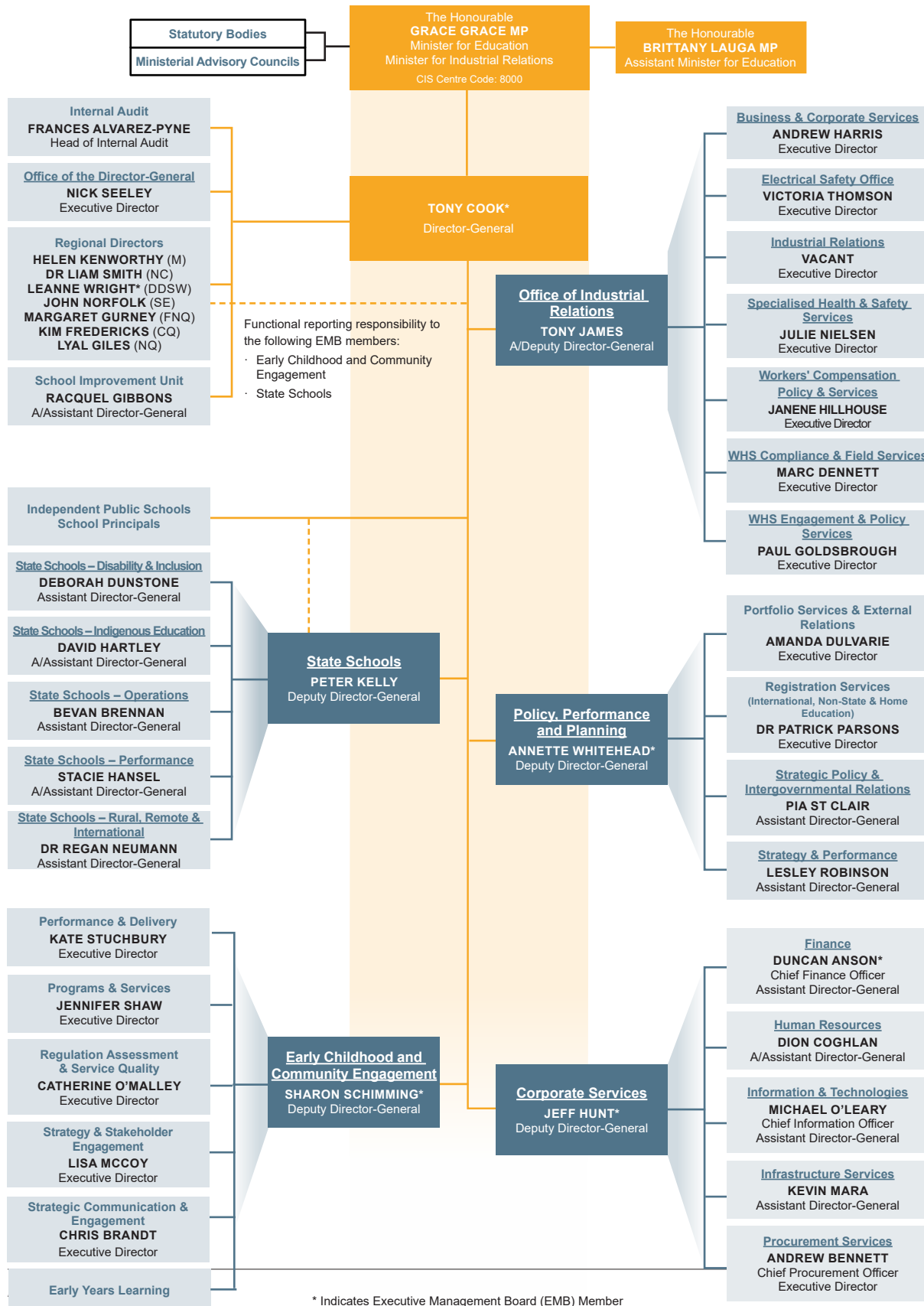
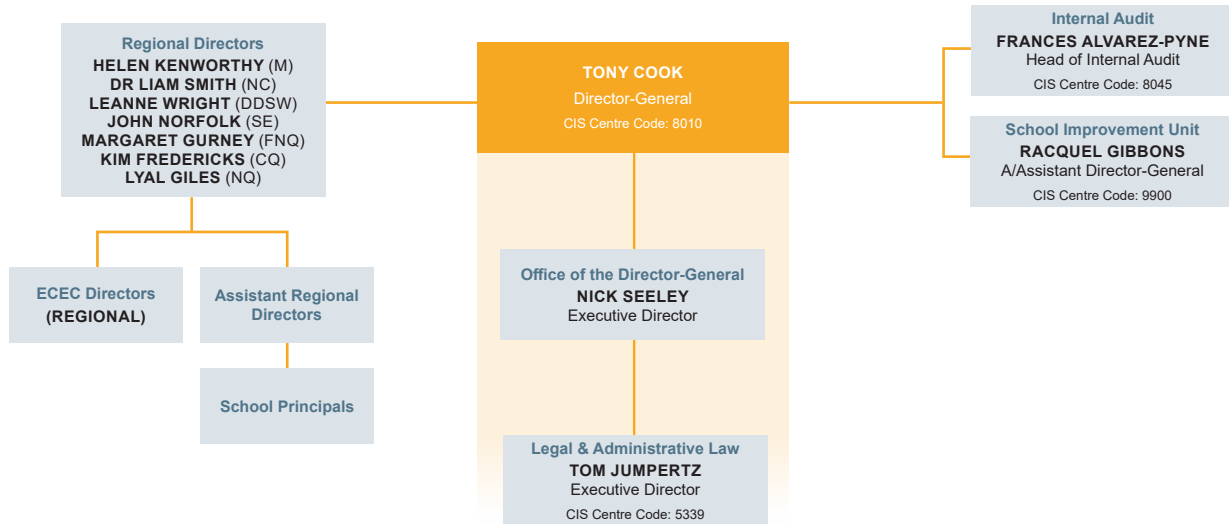


Department of Education

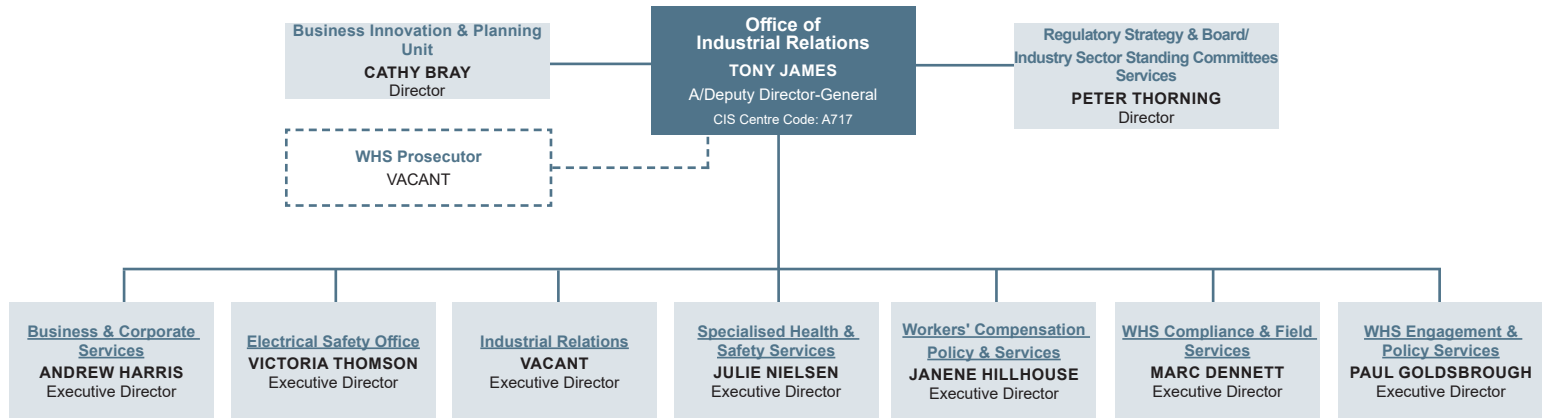
Organisational Structure as at January 2019



Office of the Director-General



Office of Industrial Relations



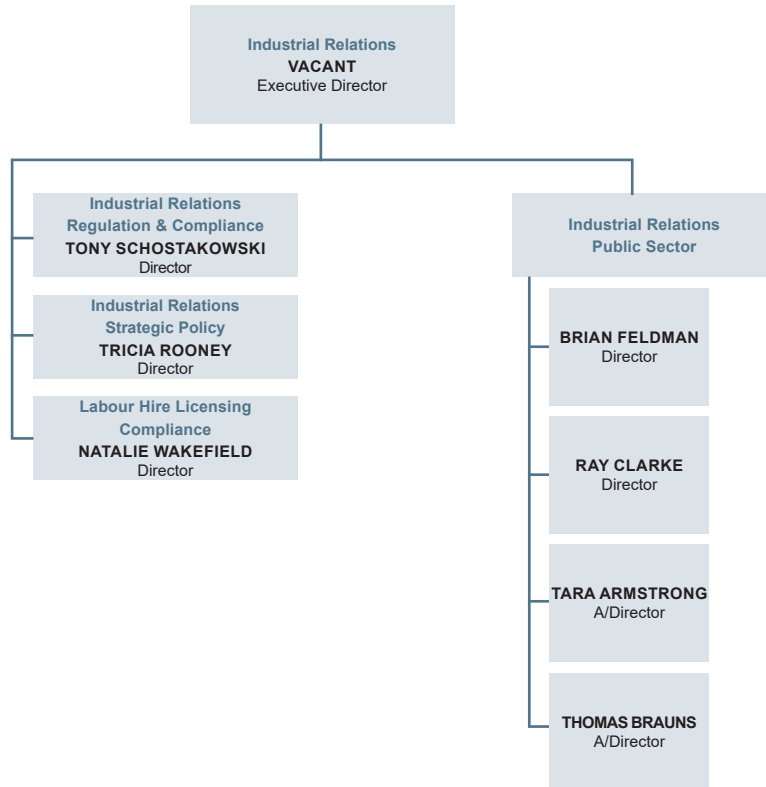
Business and Corporate Services



Electrical Safety Office



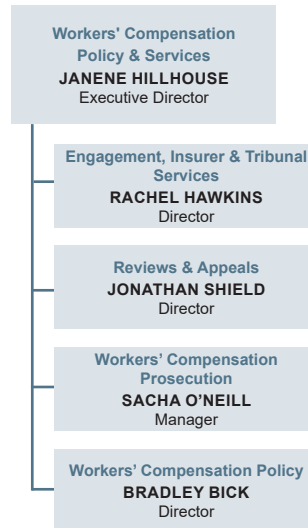
Industrial Relations



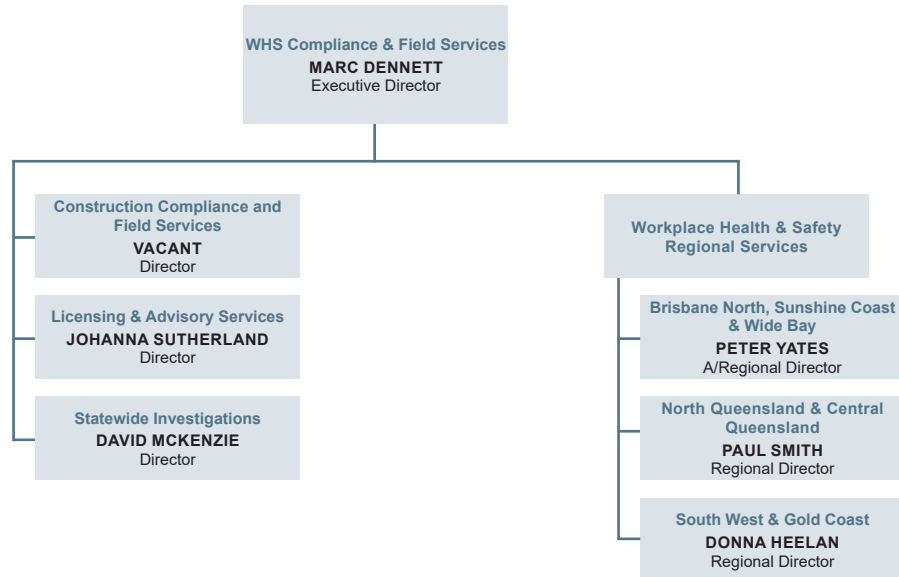
Specialised Health and Safety Services



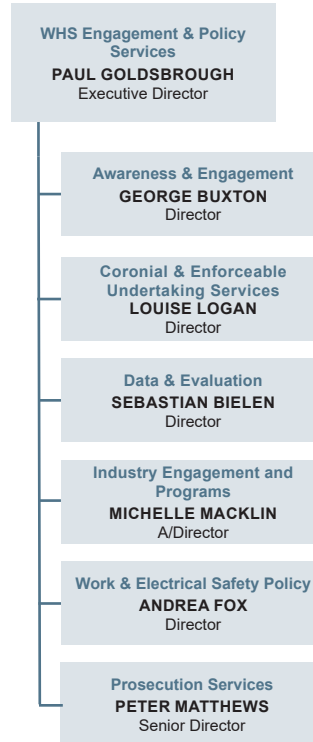
Workers' Compensation Policy and Services



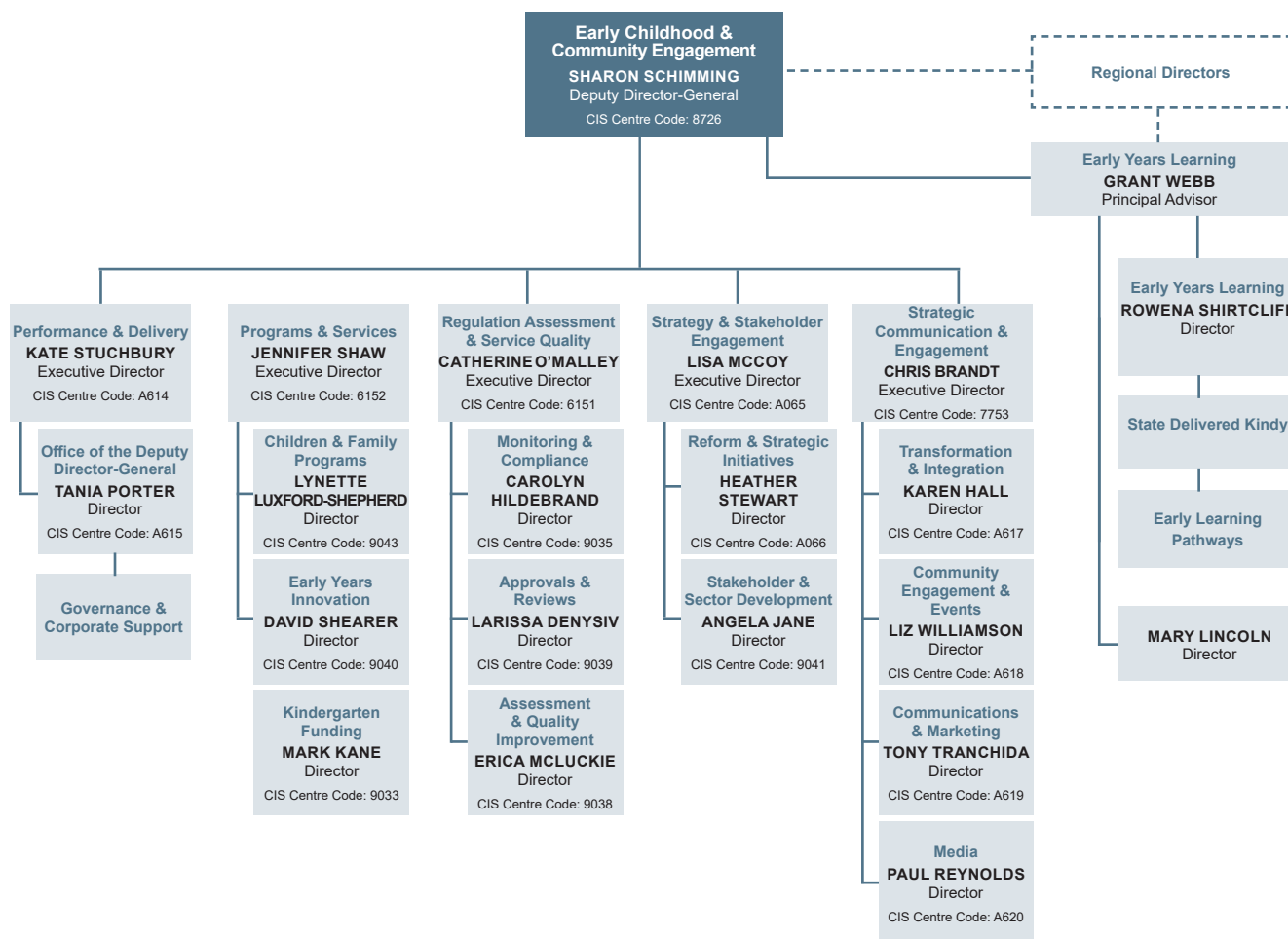
WHS Compliance and Field Services



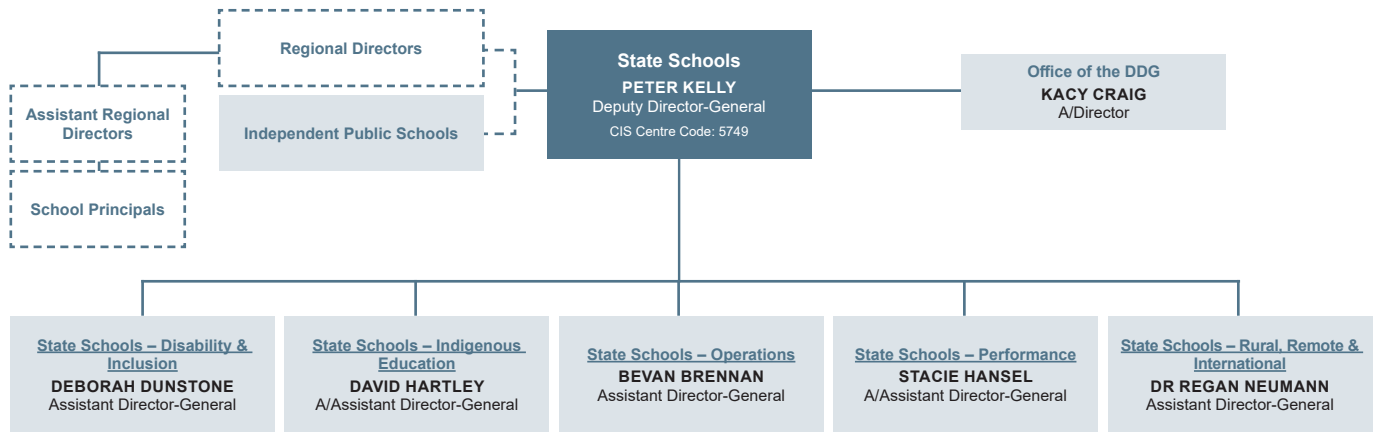
WHS Engagement and Policy Services



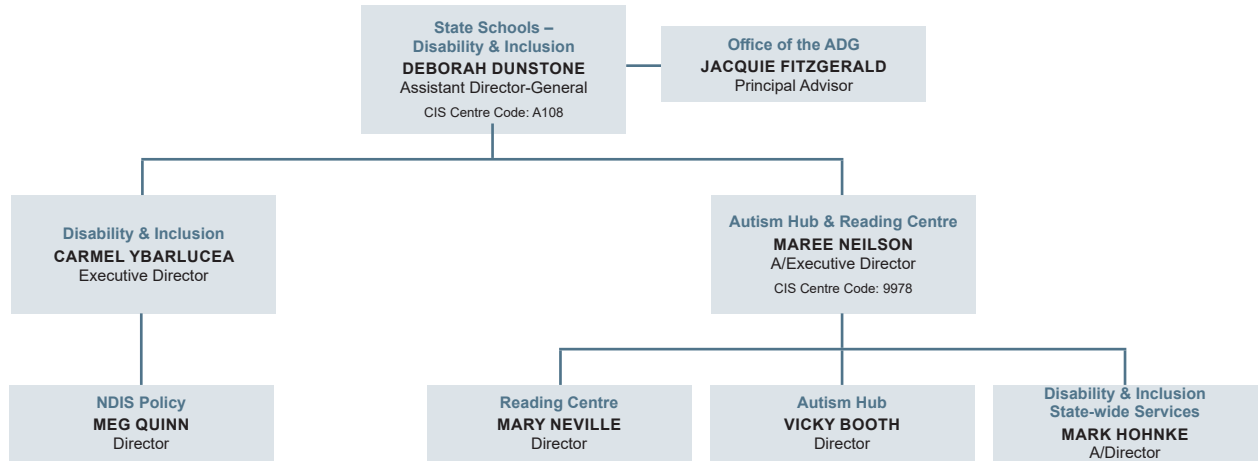
Early Childhood and Community Engagement



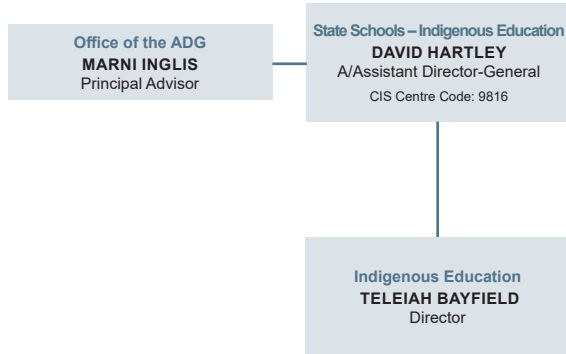
State Schools



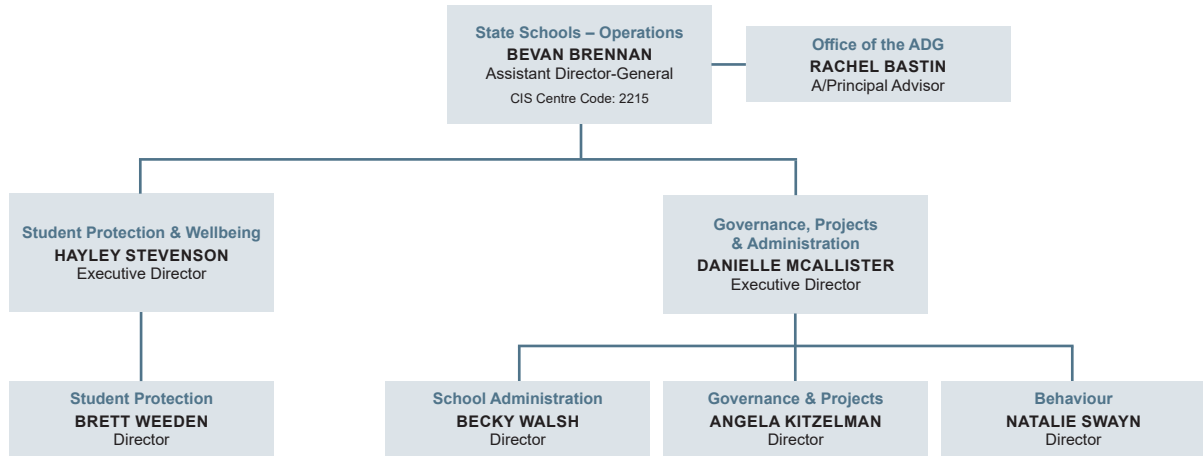
State Schools – Disability and Inclusion



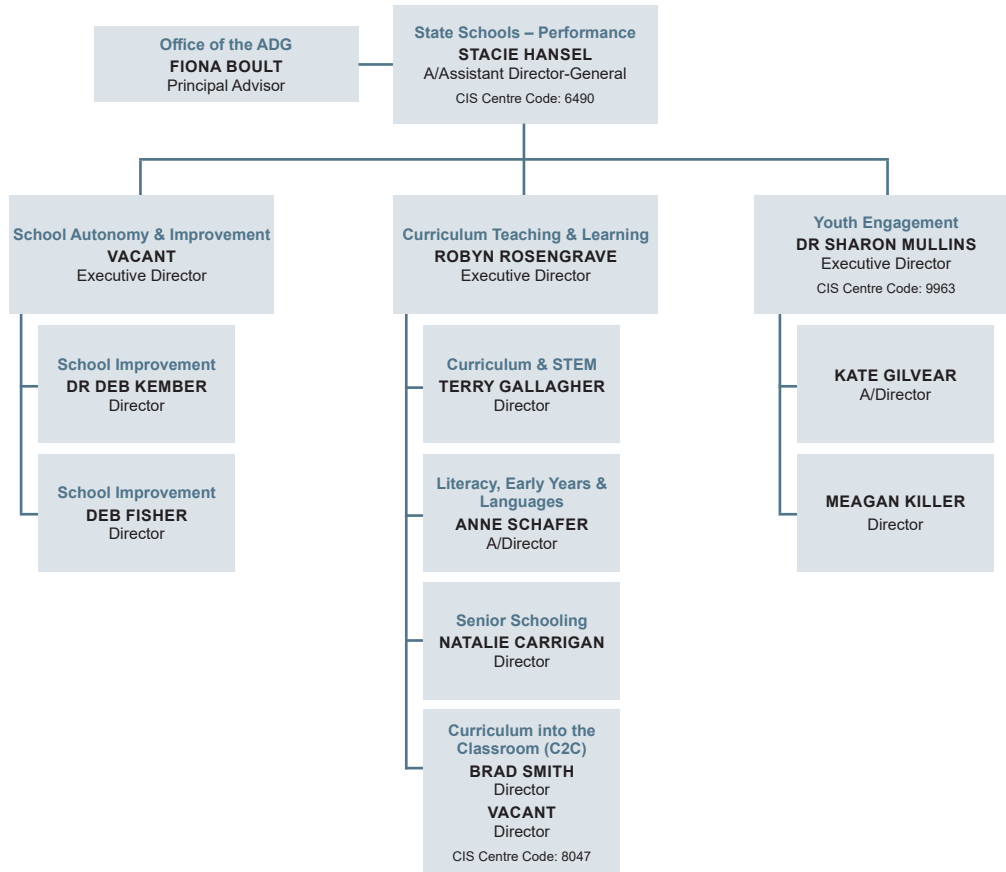
State Schools – Indigenous Education



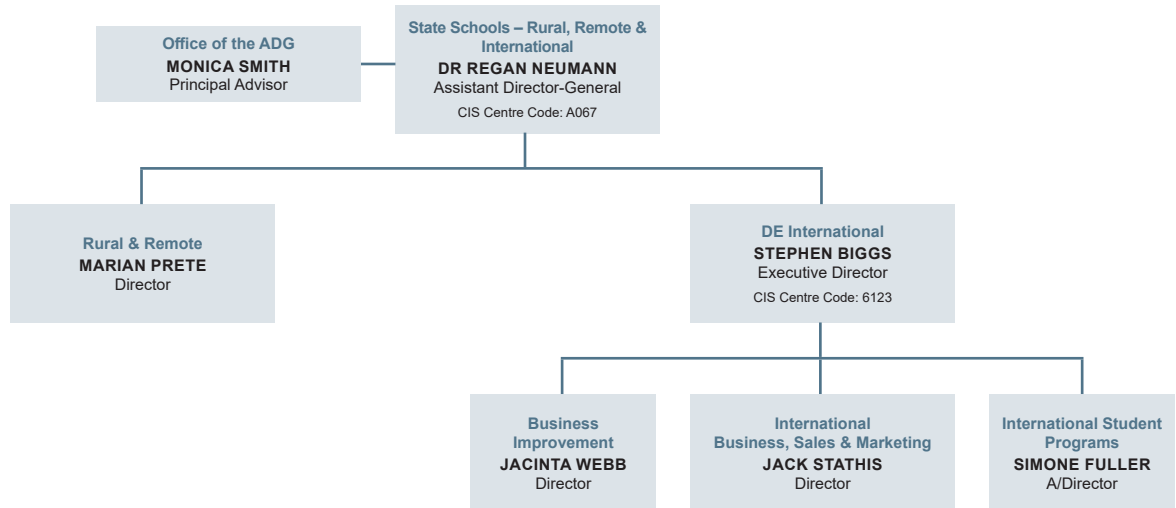
State Schools – Operations



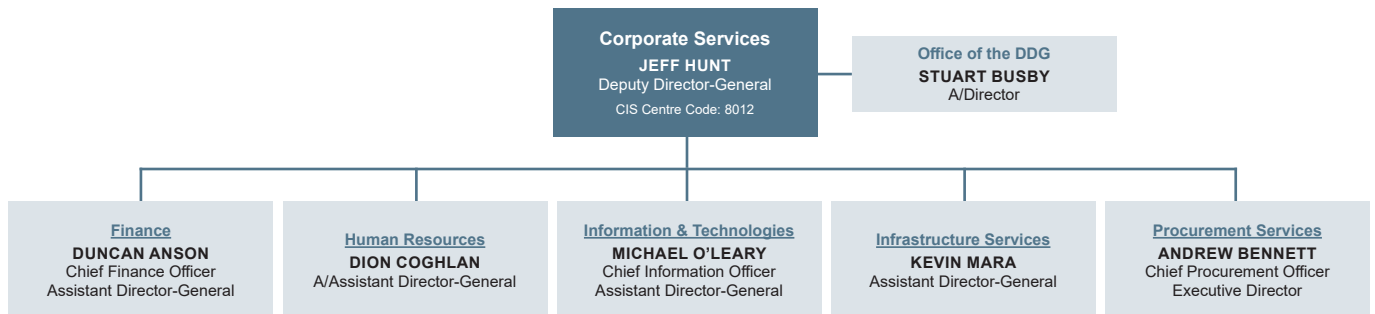
State Schools – Performance



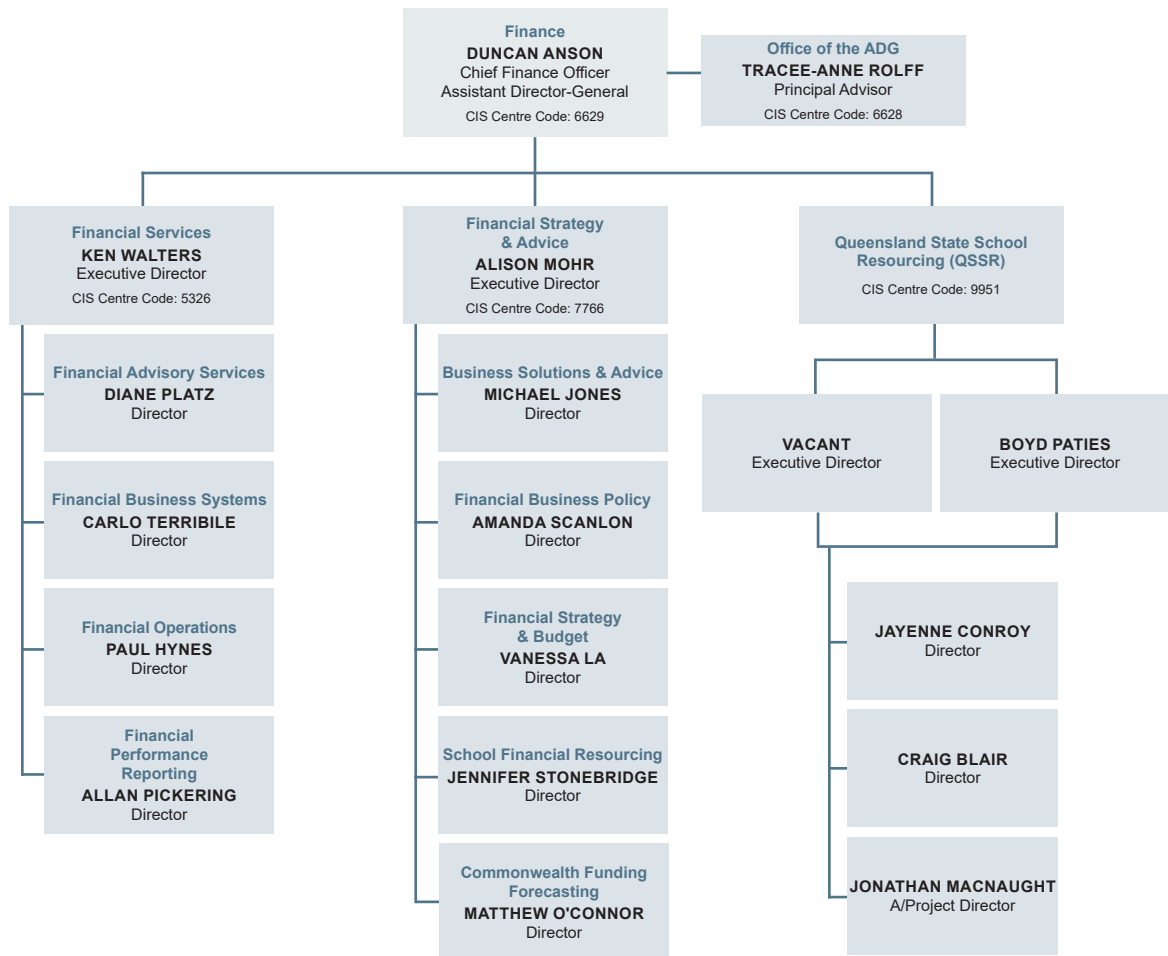
State Schools – Rural, Remote and International



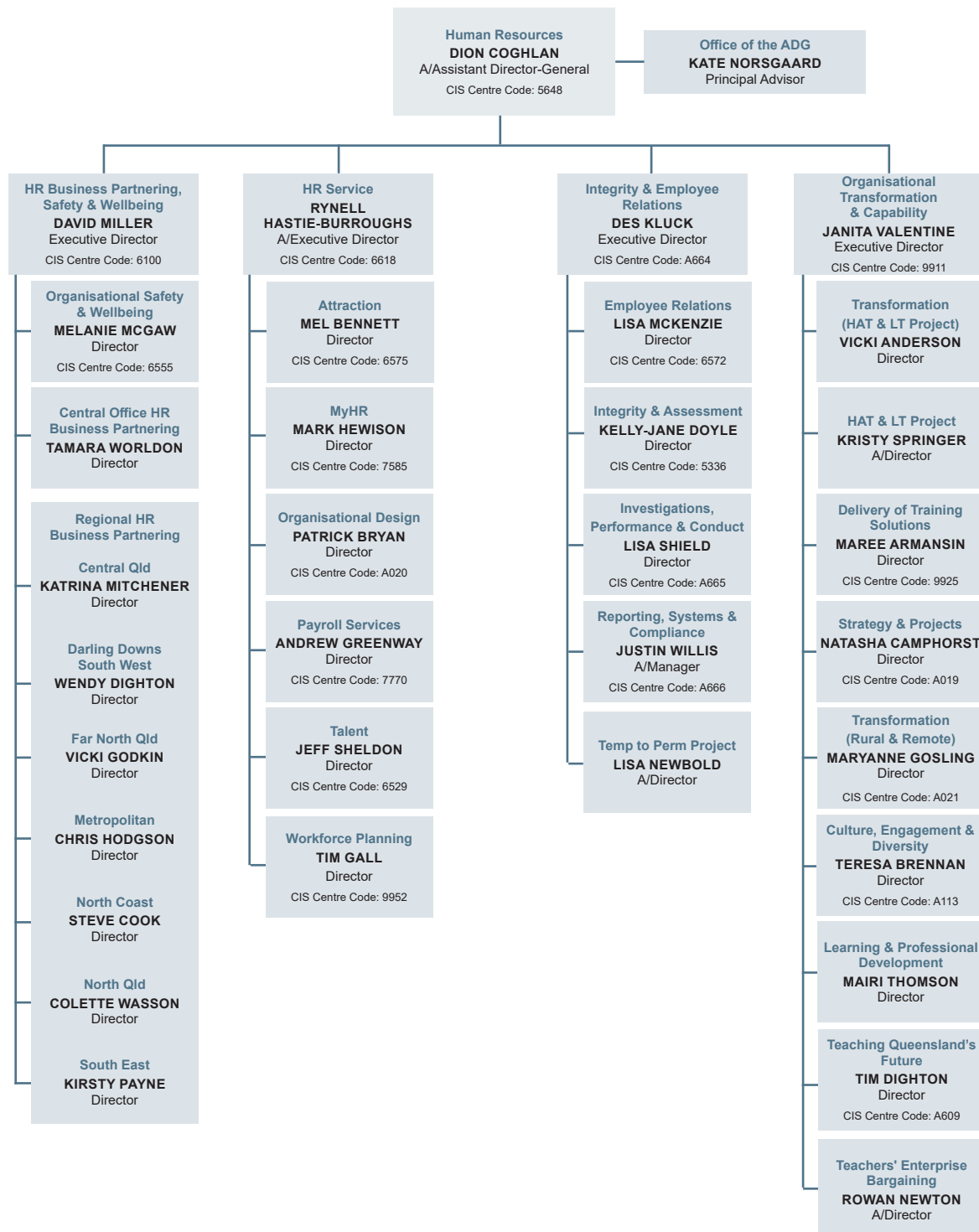
Corporate Services



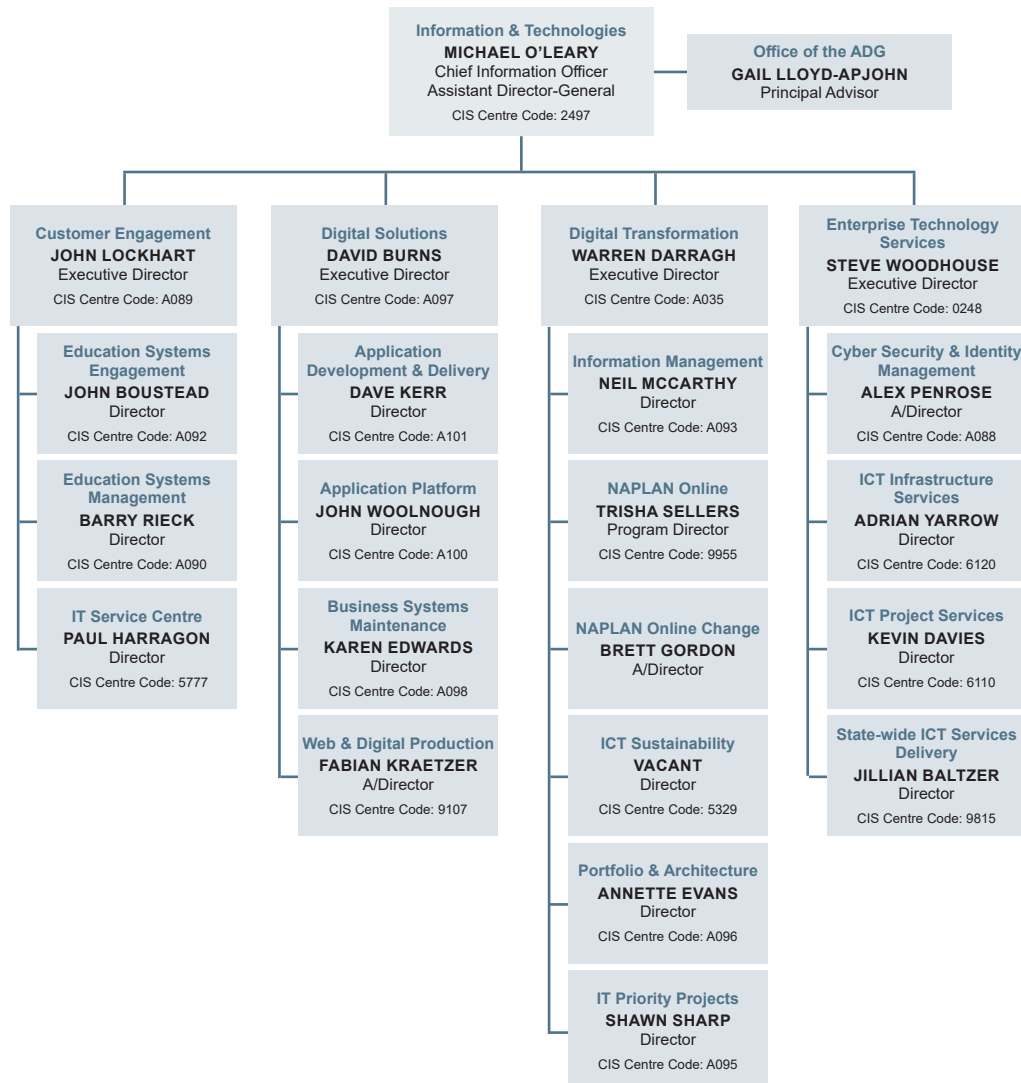
Finance



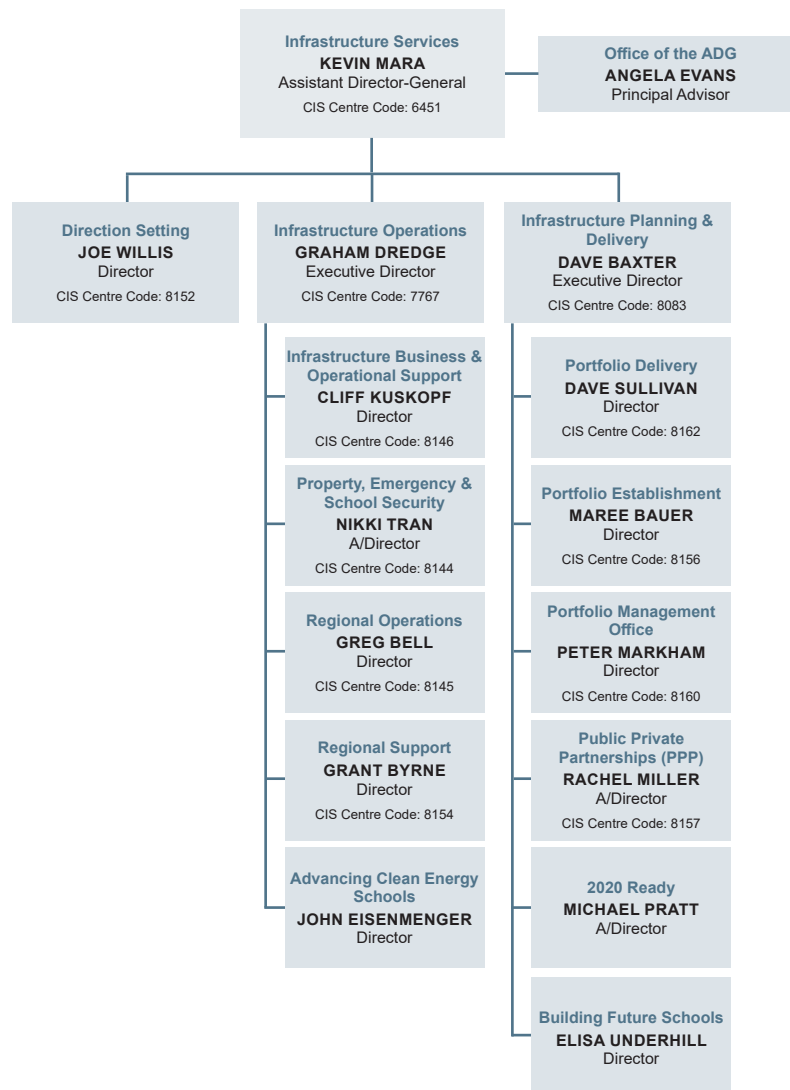
Human Resources



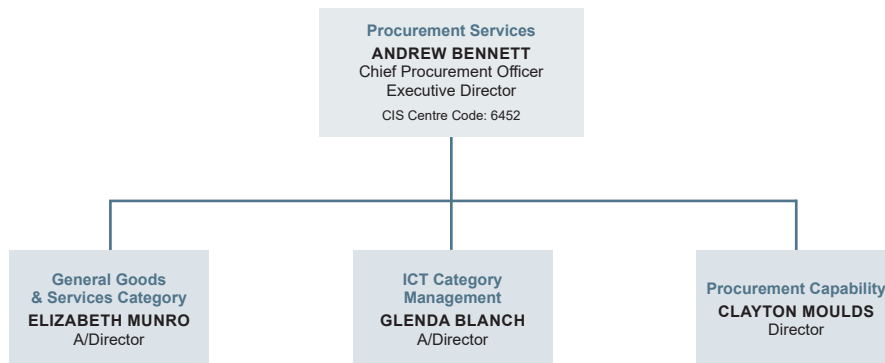
Information and Technologies



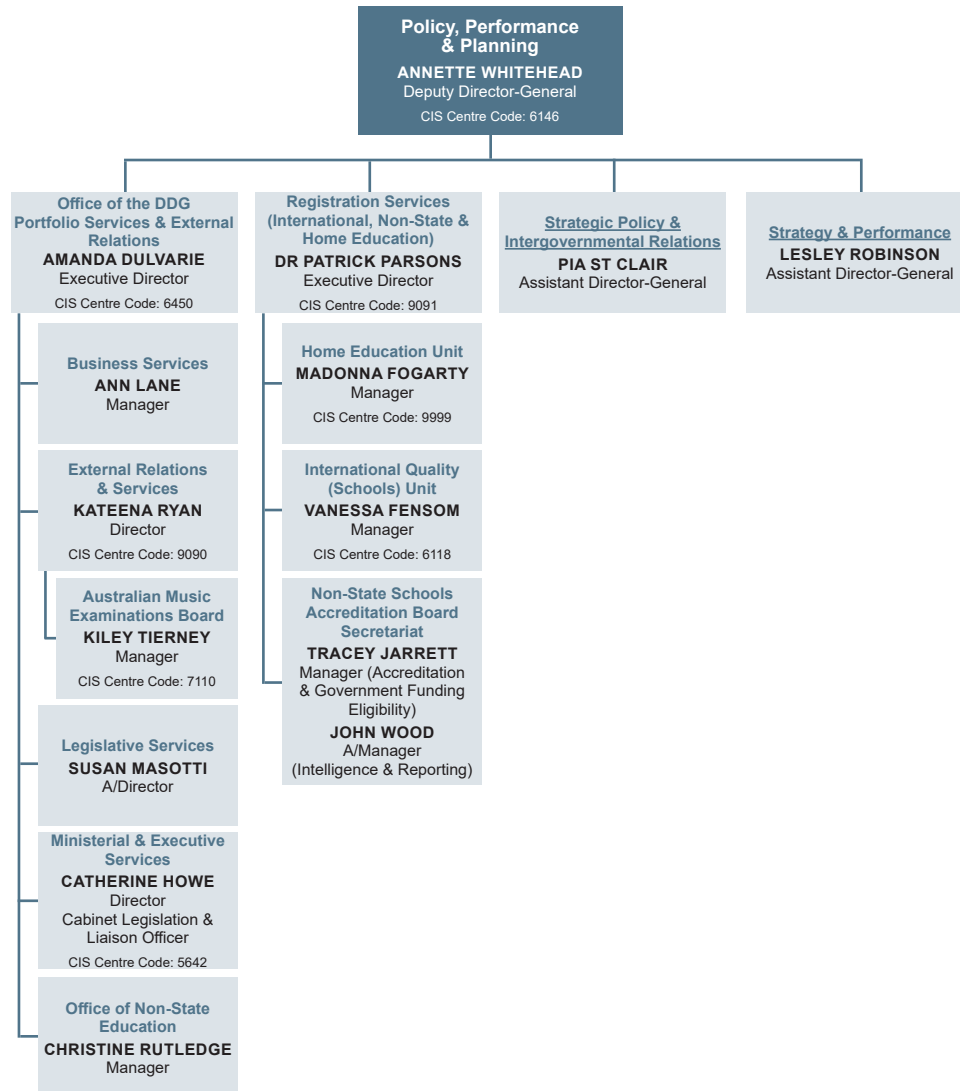
Infrastructure Services



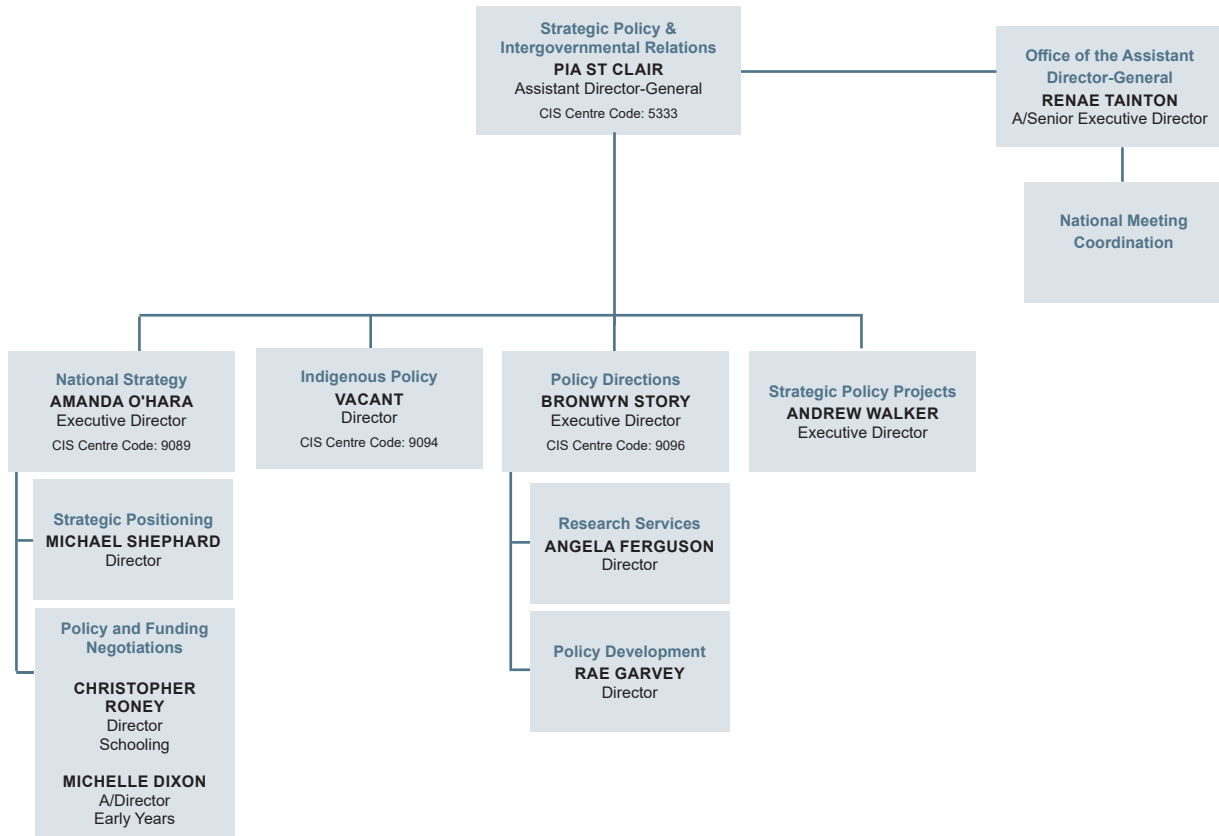
Procurement Services



Policy, Performance and Planning



Strategic Policy and Intergovernmental Relations



Strategy and Performance

